

## Accento A 18IF/15

[> Web link](#)



**Fitting style**  
Flushmount sinks / Flat-mount inset

**Model**  
A 18IF/15

**Material**  
Stainless steel 18/10

**Article no.**  
10.103.493.00

**Cabinet size**  
35 cm

**Basket**  
3½" Tipo

**Surface**  
Polished

**Price CHF**  
1'123.- excl. VAT

**Dimensions**  
180x400x140mm

**Corner radius**  
12 mm

### Overflow and drain technology



Sieve - type S



Concealed overflow

**Basket pre-assembly**  
Assembly of the valve at the factory

**Dispenser - mounting option**  
Free choice of positioning

**Overflow and drain technology**  
Standard pull-up knob

### Prices (as of 21.06.26/excl. VAT)

Model	Material	Basket	Article no.	Price CHF
Accento A 18IF/15	Stainless steel 18/10, Polished	3½" Tipo	10.103.493.00	1'123.- <a href="#">&gt; Weblink</a>

### Product description

All Accento models are handmade.

### Accessory

#### Optional accessories



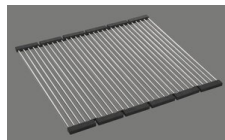
[> Weblink](#)  
40.000.912.00 / CHF  
106.-  
Colander, perforated



[> Weblink](#)  
40.001.289.00 / CHF  
106.-  
Colander, unperforated



[> Weblink](#)  
40.001.277.00 / CHF  
151.-  
Chopping board, made of plastic



[> Weblink](#)  
40.001.138.00 / CHF  
125.-  
Inox Pad

### Compatible Articles



[> Weblink](#)  
40.001.447.00 / CHF  
923.-  
Suter Merano



[> Weblink](#)  
40.001.434.00 / CHF  
330.-  
Dispenser Merano

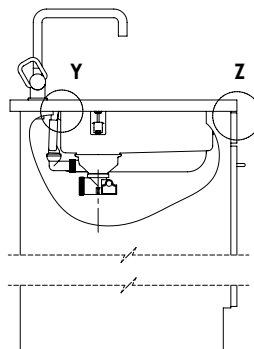
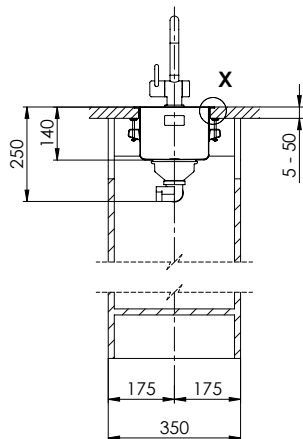
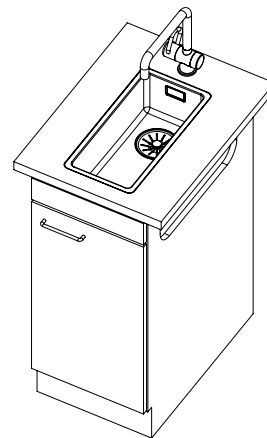
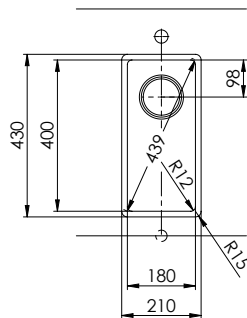
**Accento A 18IF/15**

[> Web link](#)

**Spares**

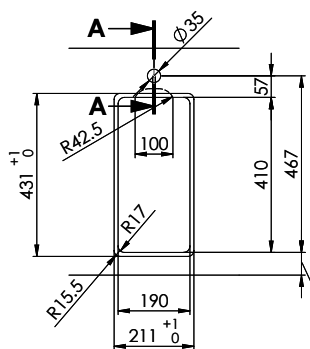
You can find the compatible range of spares here [> Weblink](#)

# Accento A 18IF



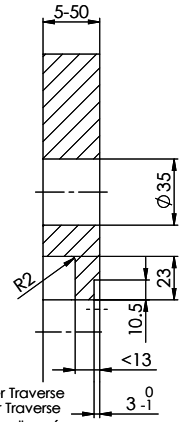
Für diese Zeichnung sind alle Rechte vorbehalten. Copyright 2003 Suter Inox AG. All rights reserved.  
 Toute réimpression ou utilisation non autorisée sans la permission écrite de la Suter Inox AG est formellement interdite.  
 Toute réimpression ou utilisation non autorisée sans la permission écrite de la Suter Inox AG est formellement interdite.

**Ausschnitt für flächenbündigen Einbau:**  
**Mesure de coupure pour montage à fleur:**  
**Intaglio per montaggio a filo top:**

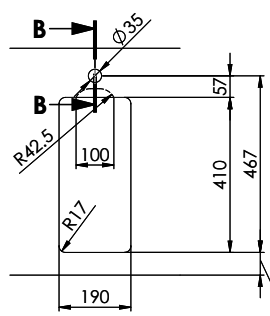


60mm bei stehender Traverse  
 80mm bei liegender Traverse  
 60mm avec traverse allongé  
 80mm avec traverse debout  
 60mm con traversa stante  
 80mm con traversa coricata

**A-A (1 : 2)**

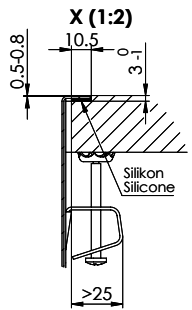
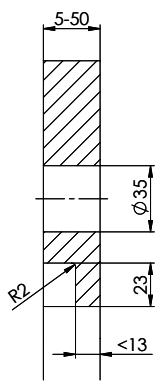


**Ausschnitt für flach aufliegender Einbau:**  
**Mesure de coupure pour montage en appui:**  
**Intaglio per montaggio sopra piano:**

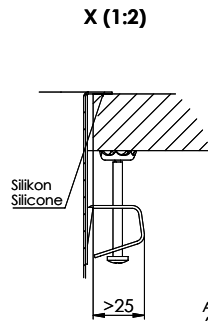
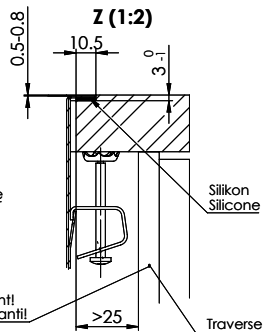
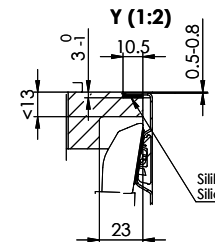


60mm bei stehender Traverse  
 80mm bei liegender Traverse  
 60mm avec traverse allongé  
 80mm avec traverse debout  
 60mm con traversa stante  
 80mm con traversa coricata

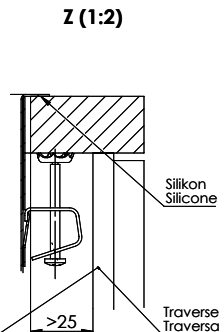
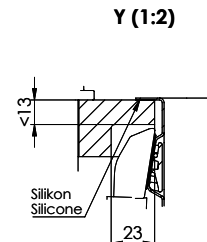
**B-B (1 : 2)**



Achtung: Traverse vorne beachten!  
 Attention: respecter la traverse avant!  
 Attenzione: rispettare la traversa avanti!



Achtung: Traverse vorne beachten!  
 Attention: respecter la traverse avant!  
 Attenzione: rispettare la traversa avanti!



Vom flächenbündigen Einbau in beschichteten Spanplatten raten wir ab.  
 Nous vous déconseillons le montage à fleur sur des panneaux de particules enduits.  
 Sconsigliamo il montaggio a filo top in pannelli di truciolato laminato.