

Accento A 50IF/12
[> Web link](#)


Fitting style
Flushmount sinks / Flat-mount inset

Model
A 50IF/12

Material
Stainless steel 18/10

Article no.
10.104.542.00

Cabinet size
55 cm

Basket
3½" Tipo

Surface
Polished

Price CHF
1'456.- excl. VAT

Dimensions
500x400x175mm

Corner radius
12 mm

Overflow and drain technology
Overflow and drain technology


Sieve - type S



Swivelling overflow cap

Prices (as of 28.06.26/excl. VAT)

Model	Material	Basket	Article no.	Price CHF
Accento A 50IF/12	Stainless steel 18/10, Polished	3½" Tipo	10.104.542.00	1'456.- > Weblink

Accessory

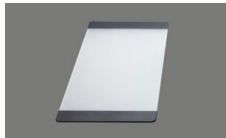
Optional accessories



[> Weblink](#)
40.000.912.00 / CHF 106.-
Colander, perforated



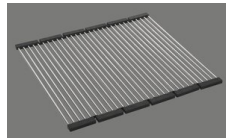
[> Weblink](#)
40.001.289.00 / CHF 106.-
Colander, unperforated



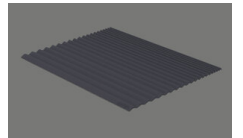
[> Weblink](#)
40.000.909.00 / CHF 151.-
Chopping board, made of glass, white



[> Weblink](#)
40.001.277.00 / CHF 151.-
Chopping board, made of plastic



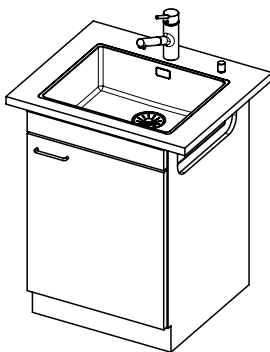
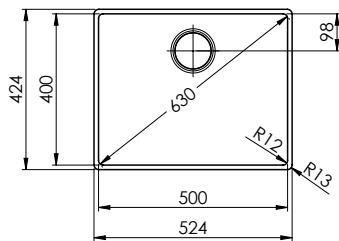
[> Weblink](#)
40.001.138.00 / CHF 125.-
Innox Pad



[> Weblink](#)
40.002.008.00 / CHF 51.-
Maro dish drainer mat, Dark Grey

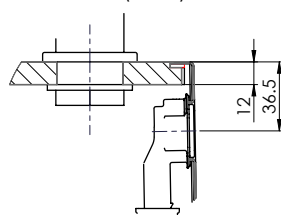
Accento A 50IF/12 sFlow Typ S

Randbreite 12mm
 Bord de 12mm de largeur
 Larghezza bordo 12mm

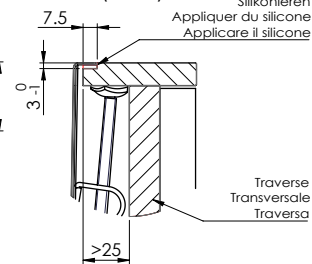


Für 12mm Arbeitsplatte.
 Pour plan de travail de 12mm.
 Per piano di lavoro da 12mm.

X (1:2)

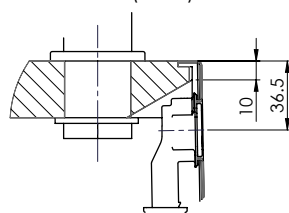


Y (1:2)

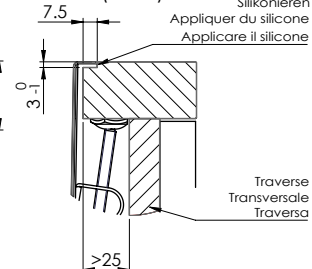


Für 13 - 30mm Arbeitsplatte.
 Pour plan de travail de 13 - 30mm.
 Per piano di lavoro da 13 - 30mm.

X (1:2)

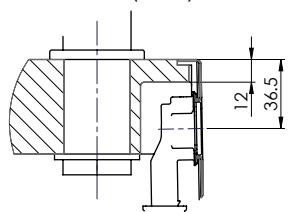


Y (1:2)

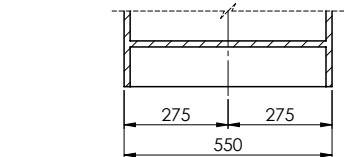
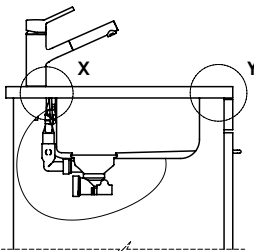
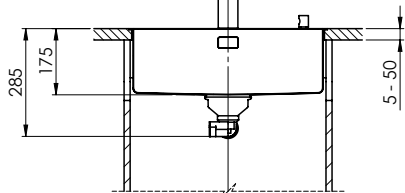
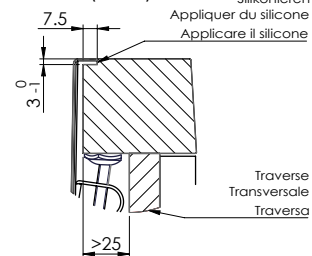


Für 13 - 50mm Arbeitsplatte.
 Pour plan de travail de 13 - 50mm.
 Per piano di lavoro da 13 - 50mm.

X (1:2)



Y (1:2)



Bei der Planung die Traverse im Möbel beachten!

Faites attention à la barre transversale dans les meubles lors de la planification!

Presta attenzione alla traversa nei mobili durante la pianificazione!

Vom flächenbündigen Einbau in beschichteten Spanplatten raten wir ab.
 Nous vous déconseillons le montage à fleur sur des panneaux de particules enduits.
 Sconsigliamo il montaggio a filo top in pannelli di truciolato laminato.

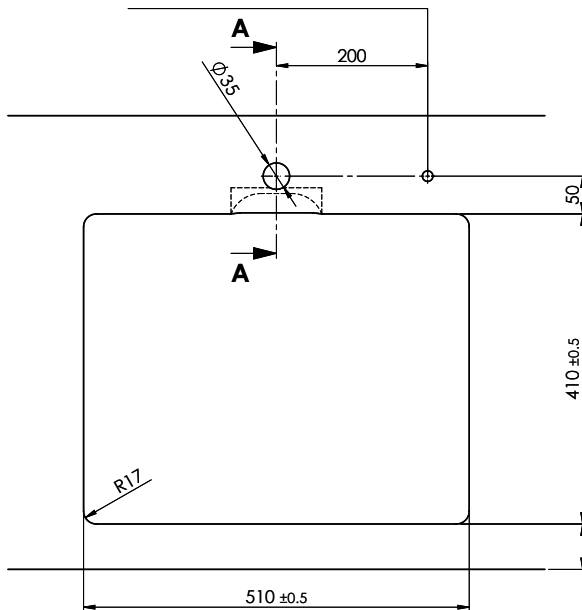
Accento A 50IF/12 sFlow Typ S

Ausschnitt für flach aufliegender Einbau - Randbreite 12mm:
Mesure de coupure pour montage en appui - Bord de 12mm de largeur:
Intaglio per montaggio soprapiano - Larghezza bordo 12mm:

Bohrung für Zug- und Druckknöpfe ø14
 Bohrung für Drehknopf ø25

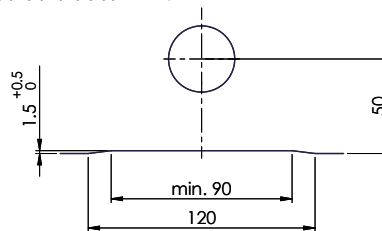
Trou pour boutons et Pousoirs de commande ø14
 Trou pour bouton rotatif ø25

Foro per Pomelli tiranti e Pomelli pulsanti ø14
 Foro per Pomolo girevoli ø25

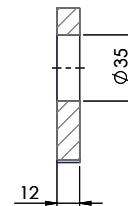


!
 min. 40mm bei stehender Traverse
 min. 80mm bei liegender Traverse
 min. 40mm avec traverse debout
 min. 80mm avec traverse allongé
 min. 40mm con traversa stante
 min. 80mm con traversa coricata

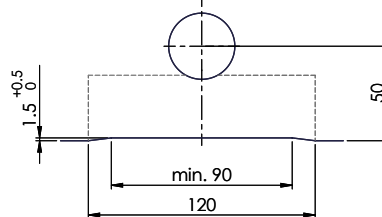
Für 12mm Arbeitsplatte.
 Pour plan de travail de 12 mm.
 Per piano di lavoro da 12 mm.



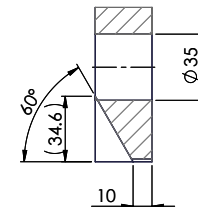
A-A (1 : 2)



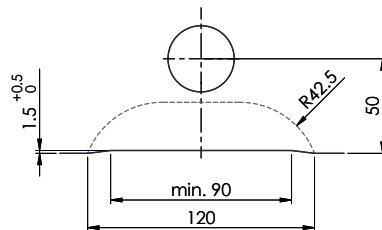
Für 13 - 30mm Arbeitsplatte.
 Pour plan de travail de 13 - 30mm.
 Per piano di lavoro da 13 - 30mm.



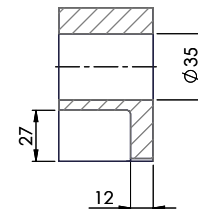
A-A (1 : 2)



Für 13 - 50mm Arbeitsplatte.
 Pour plan de travail de 13 - 50mm.
 Per piano di lavoro da 13 - 50mm.



A-A (1 : 2)



Es ist ein Dokument, und das ist ein Dokument. Copyright behält sich alle Rechte vor. Versteht sich, Behauptung ist
 nicht oder Verwendung eines Produktes ohne unsere Zustimmung ist verboten. © Copyright 2003 Suter Inox AG. All rights reserved.