

Samsung Compact Combination Steamer CS100

[> Web link](#)

Model
Samsung Compact Combination Steamer CS100

Energy efficiency class
A+

Manufacturer ID
NQ50T9939BD/SW

Article no.
500.000.107.00

Appliance type
Compact unit

Construction
Euro Norm 60 cm

VRG
10.00

Price CHF
2'996.- excl. VAT

Highlights

- 50 L cooking capacity - exceptionally spacious
- 1 L water tank for steamer function
- 40 automatic programs
- Full Touch 4,3" TFT-LCD-display and rotary knob
- Steam cleaning aid
- Practical: WiFi Smart Control, operating with smartphone and app
- Dual fan with double hot air: to cook fast, efficient and consistent
- Compact: combined steamer and oven
- Cooking chamber with ceramic enamel: scratch-proof, anti-bacterial

Product description

Construction: **Euro-Norm 60 cm**
GTIN-Nr.: **8806090110405**

Efficiency and consumption

Energy efficiency class (from A+++ to D): **A+**
Energy efficiency index: **80,3**

Energy consumption

Energy consumption, conventional (kWh / cycle): -
Energy consumption, convection / hot air (kWh / cycle): **0,61 kWh**
Standby consumption: **0,5 W**
Consumption pyrolytic cleaning process (kWh / cycle): -

Design

Color control panel: **Anthracite matt**, color door: **graphite grey matt**
Material control panel: **Glass**
Frame / material: -

Display and operation

Display: **Digital display**
Display and lighting: **Color display**
Operation: **4.3" Full Touch-LCD, rotary knob, WiFi**

Interconnection of household appliances

Samsung Smart Home: **WiFi Smart Control**

Performance properties

max. adjustable temperature for top / bottom heat, convection / hot air: **250°C**
Temperature for steam operation: **230°C**
Microwave power output -
Useable grilling space: **1962 cm²**
Useable oven capacity: **50 L**

Dimensions

Height: **456 mm**
Width: **595 mm**
Depth: **570 mm**

Empty weight

Unit weight: **36.3 kg**

Fittings

Inside dimensions (useable size) mm (height / width / depth): **247 x 443 x 443 mm**
Top and bottom heat: **Yes**
Convection: **Yes**
Hot air: **Yes**
Steam:

Samsung Compact Combination Steamer CS100[> Web link](#)**Yes**

Microwave: -
 Grill heating element available / retrofittable: **Yes / -**
 Grill motor / convection grilling: - / **Yes**
 Timer switch / timer: **Yes**
 Drawer / warming drawer: - / **optional**
 Number of cooking chambers: **1**
 Volume per cooking chamber
 Single-chamber operation / top cooking chamber / bottom cooking chamber: **50 L / - / -**
 Number of shelf levels: **4**
 Lighting / inspection window: **Yes / Yes**
 Lighting : **2 x 25W, halogen**
 Telescope rails: -
 Cleaning: **steam cleaning**
 Cooling process: **Cooling ventilator**
 Interior lining: **Ceramic enamel**

Operating modes

Steam: **40~100°C**
 Steam + heating: **40~100 °C**
 Steam + hot air: **60~230 °C**
 Steam + top heat + hot air: **100~230 °C**
 Steam + bottom heat + hot air: **100~230 °C**
 Top / bottom heat: -
 Hot air: **40~250°C**
 Hot air ECO: **40~250°C**
 Grill: large / eco / convection: **150~250 °C / - / 40~250 °C**
 Bottom heat + hot air: **40~250°C**
 Top heat + hot air: **40~250°C**
 Bottom heat : -
 Fast cooking: **40~250°C**
 Automatic roasting (ProRoasting) : **80~200°C**
 Microwave + grill: -
 Microwave + hot air: -

Programs

Special functions: **Keep warm, defrost, multilevel cooking, 10 favourite programmes**
 Automatic programs: **40**
 Dual Cook: -

Control functions

Control functions: **Time, child safety, kitchen timer, oven temperature, end time, signal tone**

Capacity

Total capacity: **2850 W**
 Hot air : **2500 W**
 Grill max. / min.: **2550 / 1100 W**

Electrical connection

Supply voltage g: **230 V**
 Frequency : **50 Hz**
 Connection values: **2,85 kWh**
 Fuse protection: **16 A**
 Length power connection: **1.4 m**
 Power plug: **cable direct connection cable**

Technical data

Standard width: **Euro-Norm 60 cm**
 Standard height: **Euro-Norm 45 cm**
 Niche height: **446 mm - 450 mm**
 Niche width: **564 mm - 568 mm**
 Niche depth: **min. 550 mm**
 Unit width in mm : **595 mm**
 Unit height in mm: **494 mm**
 Unit depth in mm: **570 mm**

Packaging

Weight, incl. packaging: **40,4 kg**
 Packaging dimensions (H x W x D): **590 x 700 x 660 mm**

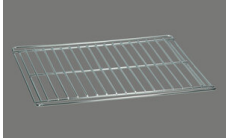
Samsung Compact Combination Steamer CS100 > Web link

Accessory

Included accessories



> Weblink
500.000.047.00 / CHF 2.-
Cooking container, with holes



> Weblink
500.000.044.00 / CHF 2.-
Oven grill



> Weblink
500.000.119.00 / CHF 2.-
Baking sheet 20 mm

Optional accessories



> Weblink
500.000.074.00 / CHF 60.-
Set of support brackets

