

**Daneo DAN 34F/7**

[> Web link](#)



**Fitting style**  
Flushmount sinks

**Model**  
DAN 34F/7

**Material**  
Stainless steel 18/10

**Article no.**  
10.105.696.00

**Cabinet size**  
40 cm

**Basket**  
3½" Tipo Desino

**Surface**  
Matt

**Price CHF**  
1'332.- excl. VAT

**Dimensions**  
340x400x175mm

**Corner radius**  
22 mm

**Overflow and drain technology**



Tipo Desino:  
Concealed drain with  
basket underneath -  
type M



Swivelling overflow  
cap

**Basket pre-assembly**

Basket pre-assembly ex works

**Dispenser - mounting option**

Free choice of positioning

**Overflow and drain technology**

**Prices (as of 06.05.26/excl. VAT)**

Model	Material	Basket	Article no.	Price CHF
Daneo DAN 34F/7	Stainless steel 18/10, Matt	3½" eFlow Desino	10.104.670.00	1'657.- > Weblink
		3½" TouchFlow Desino	10.104.643.00	1'542.- > Weblink
		3½" Space-saving Desino	10.104.644.00	1'332.- > Weblink
		3½" Tipo Desino	10.105.696.00	1'332.- > Weblink

**Product description**

Only available for flushmount installation.

**Flush-mounted installation: Recommendation for the choice of worktop:**

We recommend installation in worktops made of ceramic, granite, artificial stone (e.g. Corian or Varicor) or solid wood. We do not recommend installation in coated chipboard.

**Cleaning**

The Desino Drain Sieve is dishwasher-safe and can be cleaned completely or separately up to a maximum temperature of 65°C.

**Accessory**

Optional accessories



> Weblink  
40.000.912.00 / CHF  
106.-  
Colander, perforated



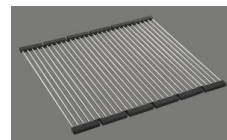
> Weblink  
40.001.289.00 / CHF  
106.-  
Colander, unperforated



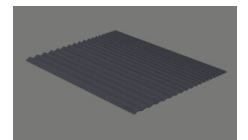
> Weblink  
40.000.909.00 / CHF  
151.-  
Chopping board, made of  
glass, white



> Weblink  
40.001.277.00 / CHF  
151.-  
Chopping board, made of  
plastic



> Weblink  
40.001.138.00 / CHF  
125.-  
Inox Pad



> Weblink  
40.002.008.00 / CHF 51.-  
Maro dish drainer mat,  
Dark Grey

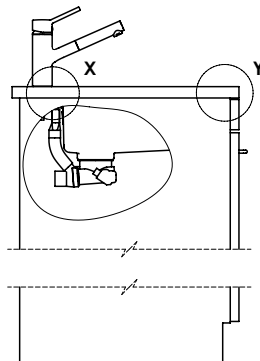
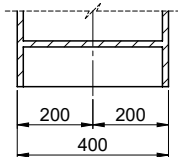
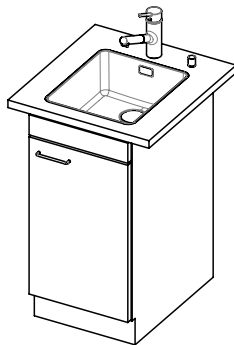
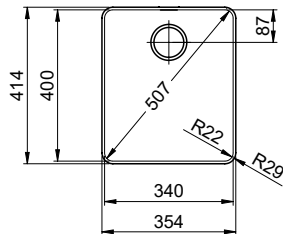
**Daneo DAN 34F7** > Web link

**Spares**

You can find the compatible range of spares here > [Weblink](#)

# Daneo DAN 34F/7 Desino

**Randbreite 7mm**  
**Bord de 7mm de largeur**  
**Larghezza bordo 7mm**



Bei der Planung die Traverse im Möbel beachten!

Faites attention à la barre transversale dans les meubles lors de la planification!

Presta attenzione alla traversa nei mobili durante la pianificazione!

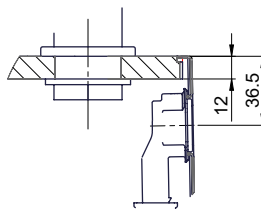
Vom flächenbündigen Einbau in beschichteten Spanplatten raten wir ab.

Nous vous déconseillons le montage à fleur sur des panneaux de particules enduits.

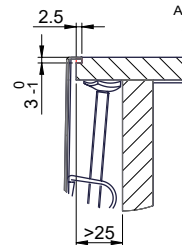
Sconsigliamo il montaggio a filo top in pannelli di truciolato laminato.

Für 12mm Arbeitsplatte.  
 Pour plan de travail de 12mm.  
 Per piano di lavoro da 12mm.

X (1 : 2)



Y (1 : 2)

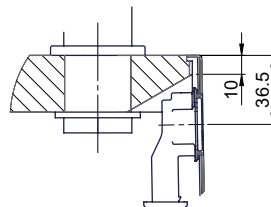


Silikonieren  
 Appliquer du silicone  
 Applicare il silicone

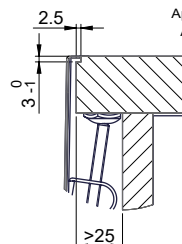
Traverse  
 Transversale  
 Traversa

Für 13 - 30mm Arbeitsplatte.  
 Pour plan de travail de 13 - 30mm.  
 Per piano di lavoro da 13 - 30mm.

X (1 : 2)



Y (1 : 2)

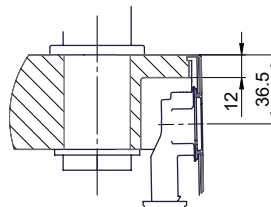


Silikonieren  
 Appliquer du silicone  
 Applicare il silicone

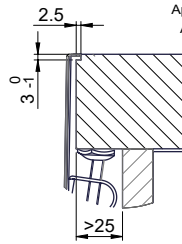
Traverse  
 Transversale  
 Traversa

Für 13 - 50mm Arbeitsplatte.  
 Pour plan de travail de 13 - 50mm.  
 Per piano di lavoro da 13 - 50mm.

X (1 : 2)



Y (1 : 2)



Silikonieren  
 Appliquer du silicone  
 Applicare il silicone

Traverse  
 Transversale  
 Traversa

# Daneo DAN 34F/7 Desino

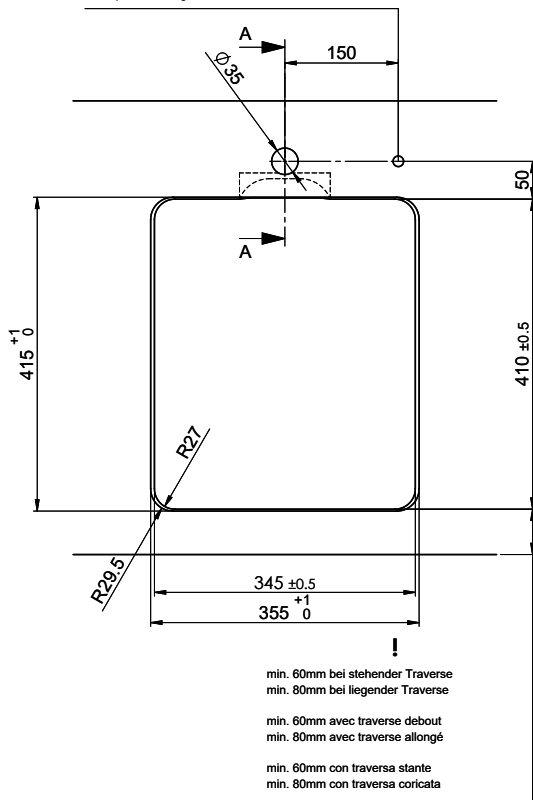
Ausschnitt für flächenbündigen Einbau - Randbreite 7mm:  
 Mesure de coupe pour montage à fleur - Bord de 7mm de largeur:  
 Intaglio per montaggio a filo top - Larghezza bordo 7mm:

SUTER

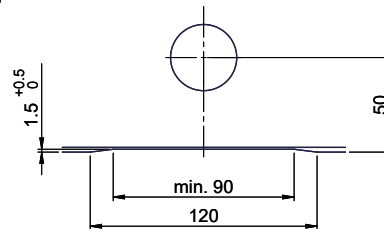
Bohrung für Zug- und Druckknöpfe ø14  
 Bohrung für Drehknopf ø25

Trou pour boutons et Pousoirs de commande ø14  
 Trou pour bouton rotatif ø25

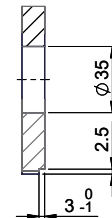
Foro per Pomelli tiranti e Pomelli pulsanti ø14  
 Foro per Pomolo girevoli ø25



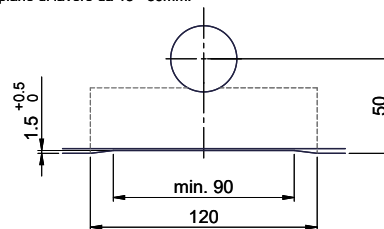
Für 12mm Arbeitsplatte.  
 Pour plan de travail de 12 mm.  
 Per piano di lavoro da 12 mm.



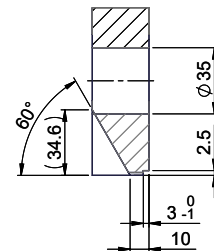
A-A (1 : 2)



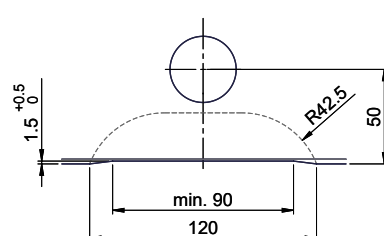
Für 13 - 30mm Arbeitsplatte.  
 Pour plan de travail de 13 - 30mm.  
 Per piano di lavoro da 13 - 30mm.



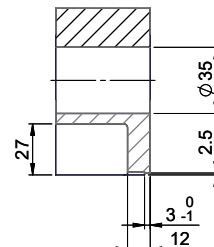
A-A (1 : 2)



Für 13 - 50mm Arbeitsplatte.  
 Pour plan de travail de 13 - 50mm.  
 Per piano di lavoro da 13 - 50mm.



A-A (1 : 2)



Für dieses Dokument und den darin angegebenen Gegenstand behalten wir uns alle Rechte vor. Verwendungs- oder Vervielfältigungsrechte sind vorbehalten. © Copyright 2020 Suter Inox AG. Alle Rechte vorbehalten.