

Daneo DAN 40IF/12

[> Web link](#)



Fitting style
Flushmount sinks / Flat-mount inset

Model
DAN 40IF/12

Material
Stainless steel 18/10

Article no.
10.104.673.00

Cabinet size
45 cm

Basket
3½" eFlow Desino

Surface
Matt

VRG
0.19

Price CHF
1'407.- excl. VAT

Dimensions
400x400x175mm

Corner radius
22 mm

Overflow and drain technology



Desino: Concealed drain with basket underneath - type M



Concealed overflow eFlow

Basket pre-assembly
Basket pre-assembly ex works

Dispenser - mounting option
Free choice of positioning

Overflow and drain technology
Standard pull-up knob

Prices (as of 07.05.26/excl. VAT)

Model	Material	Basket	Article no.	Price CHF
Daneo DAN 40IF/12	Stainless steel 18/10, Matt	3½" Tipo Desino	10.105.708.00	1'082.- > Weblink
		3½" Space-saving Desino	10.104.650.00	1'082.- > Weblink
		3½" TouchFlow Desino	10.104.649.00	1'292.- > Weblink
		3½" eFlow Desino	10.104.673.00	1'407.- > Weblink

Product description

1 Product Model, 2 Installation Types

The special advantage of IF models: Installation as flush with the adjacent areas as well as laid flat on top is possible.

Flush-mounted installation: Recommendation for the choice of worktop:

We recommend installation in worktops made of ceramic, granite, artificial stone (e.g. Corian or Varicor) or solid wood. We do not recommend installation in coated chipboard.

Cleaning

The Desino Drain Sieve is dishwasher-safe and can be cleaned completely or separately up to a maximum temperature of 65°C.

Accessory

Optional accessories



> Weblink
40.000.912.00 / CHF 106.-
Colander, perforated



> Weblink
40.001.289.00 / CHF 106.-
Colander, unperforated



> Weblink
40.000.909.00 / CHF 151.-
Chopping board, made of glass, white



> Weblink
40.001.277.00 / CHF 151.-
Chopping board, made of plastic



> Weblink
40.001.138.00 / CHF 125.-
Inox Pad

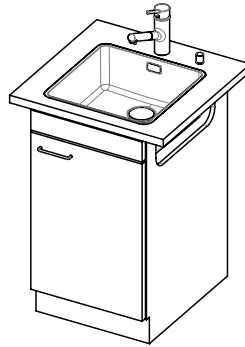
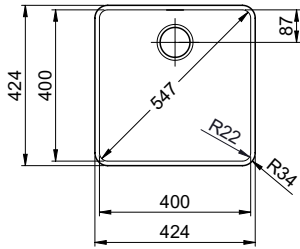


> Weblink
40.002.008.00 / CHF 51.-
Maro dish drainer mat, Dark Grey

Daneo DAN 40IF/12 > [Web link](#)

Spares

You can find the compatible range of spares here > [Weblink](#)

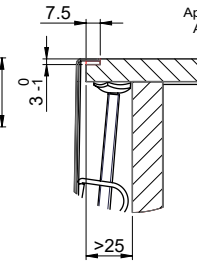


Für 12mm Arbeitsplatte.
 Pour plan de travail de 12mm.
 Per piano di lavoro da 12mm.

X (1 : 2)



Y (1 : 2)

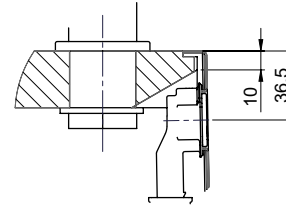


Silikonieren
 Appliquer du silicone
 Applicare il silicone

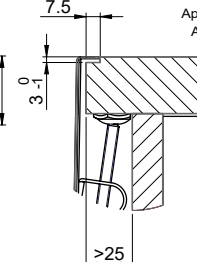
Traverse
 Transversale
 Traversa

Für 13 - 30mm Arbeitsplatte.
 Pour plan de travail de 13 - 30mm.
 Per piano di lavoro da 13 - 30mm.

X (1 : 2)



Y (1 : 2)

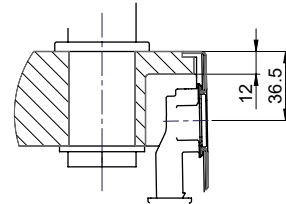


Silikonieren
 Appliquer du silicone
 Applicare il silicone

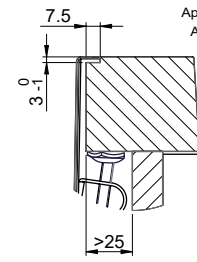
Traverse
 Transversale
 Traversa

Für 13 - 50mm Arbeitsplatte.
 Pour plan de travail de 13 - 50mm.
 Per piano di lavoro da 13 - 50mm.

X (1 : 2)

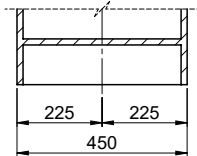
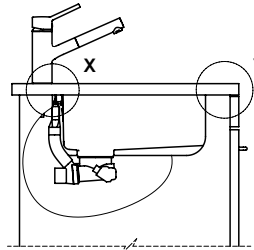
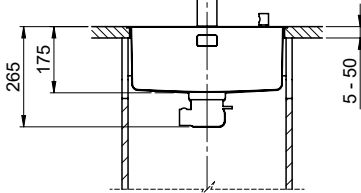


Y (1 : 2)



Silikonieren
 Appliquer du silicone
 Applicare il silicone

Traverse
 Transversale
 Traversa



Bei der Planung die Traverse im Möbel beachten!

Faites attention à la barre transversale dans les meubles lors de la planification!

Presta attenzione alla traversa nei mobili durante la pianificazione!

Vom flächenbündigen Einbau in beschichteten Spanplatten raten wir ab.

Nous vous déconseillons le montage à fleur sur des panneaux de particules enduits.

Sconsigliamo il montaggio a filo top in pannelli di truciolato laminato.

Daneo DAN 40IF/12 Desino

Suter Inox AG
 Schärerstrasse 25
 CH-1116 Schönenbuch
 T +41 78 822 64 00
 info@suter.ch
 suter.ch

Ausschnitt für flach aufliegender Einbau - Randbreite 12mm:
 Mesure de coupure pour montage en appui - Bord de 12mm de largeur:
 Intaglio per montaggio soprapiano - Larghezza bordo 12mm:

SUTER

Bohrung für Zug- und Druckknöpfe ø14
 Bohrung für Drehknopf ø25

Trou pour boutons et Pousoirs de commande ø14
 Trou pour bouton rotatif ø25

Foro per Pomelli tiranti e Pomelli pulsanti ø14
 Foro per Pomolo girevoli ø25



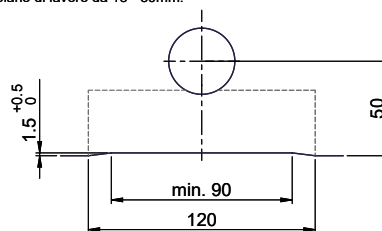
Für 12mm Arbeitsplatte.
 Pour plan de travail de 12 mm.
 Per piano di lavoro da 12 mm.



A-A (1 : 2)



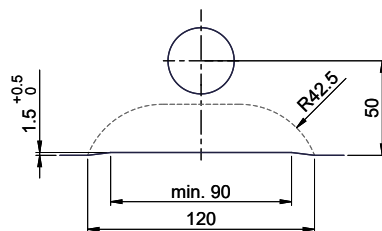
Für 13 - 30mm Arbeitsplatte.
 Pour plan de travail de 13 - 30mm.
 Per piano di lavoro da 13 - 30mm.



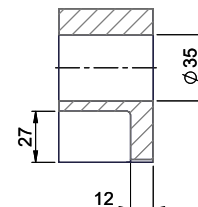
A-A (1 : 2)



Für 13 - 50mm Arbeitsplatte.
 Pour plan de travail de 13 - 50mm.
 Per piano di lavoro da 13 - 50mm.



A-A (1 : 2)



Für diese Dokument sind den abgesetzten Gegenstand behalten wir uns alle Rechte vor. Verweigerung, Behauptung an
 Dritte die Verwendung eines Dritten ohne unsere Zustimmung ist verboten. © Copyright 2020 Suter Inox AG. Alle Rechte vorbehalten.