

Daneo DAN 55F/7

[> Web link](#)



Fitting style
Flushmount sinks

Model
DAN 55F/7

Material
Stainless steel 18/10

Article no.
10.104.678.00

Cabinet size
60 cm

Basket
3½" eFlow Desino

Surface
Matt

VRG
0.19

Price CHF
1'869,- excl. VAT

Dimensions
550x400x175mm

Corner radius
22 mm

Overflow and drain technology



Desino: Concealed drain with basket underneath - type M



Concealed overflow eFlow

Basket pre-assembly

Basket pre-assembly ex works

Dispenser - mounting option

Free choice of positioning

Overflow and drain technology

Standard pull-up knob

Prices (as of 06.05.26/excl. VAT)

Model	Material	Basket	Article no.	Price CHF
Daneo DAN 55F/7	Stainless steel 18/10, Matt	3½" Tipo Desino	10.105.728.00	1'544.- > Weblink
		3½" Space-saving Desino	10.104.660.00	1'544.- > Weblink
		3½" TouchFlow Desino	10.104.659.00	1'754.- > Weblink
		3½" eFlow Desino	10.104.678.00	1'869.- > Weblink

Product description

Only available for flushmount installation.

Flush-mounted installation: Recommendation for the choice of worktop:

We recommend installation in worktops made of ceramic, granite, artificial stone (e.g. Corian or Varicor) or solid wood. We do not recommend installation in coated chipboard.

Cleaning

The Desino Drain Sieve is dishwasher-safe and can be cleaned completely or separately up to a maximum temperature of 65°C.

Accessory

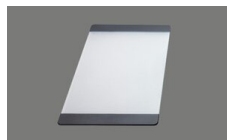
Optional accessories



> Weblink
40.000.912.00 / CHF 106.-
Colander, perforated



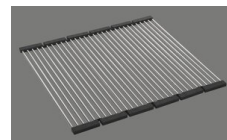
> Weblink
40.001.289.00 / CHF 106.-
Colander, unperforated



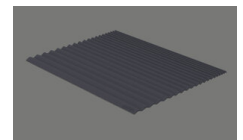
> Weblink
40.000.909.00 / CHF 151.-
Chopping board, made of glass, white



> Weblink
40.001.277.00 / CHF 151.-
Chopping board, made of plastic



> Weblink
40.001.138.00 / CHF 125.-
Inox Pad



> Weblink
40.002.008.00 / CHF 51.-
Maro dish drainer mat, Dark Grey

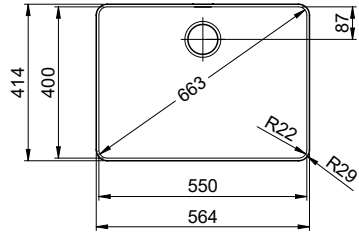
Daneo DAN 55F7 > [Web link](#)

Spares

You can find the compatible range of spares here > [Weblink](#)

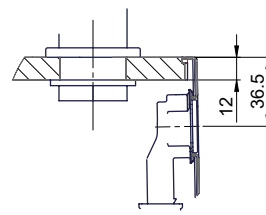
Daneo DAN 55F/7 Desino

Randbreite 7mm
Bord de 7mm de largeur
Larghezza bordo 7mm

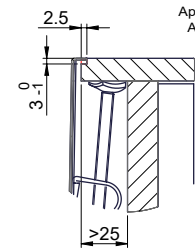


Für 12mm Arbeitsplatte.
 Pour plan de travail de 12mm.
 Per piano di lavoro da 12mm.

X (1 : 2)



Y (1 : 2)



Silikonieren
 Appliquer du silicone
 Applicare il silicone

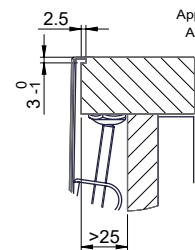
Traverse
 Transversale
 Traversa

Für 13 - 30mm Arbeitsplatte.
 Pour plan de travail de 13 - 30mm.
 Per piano di lavoro da 13 - 30mm.

X (1 : 2)



Y (1 : 2)

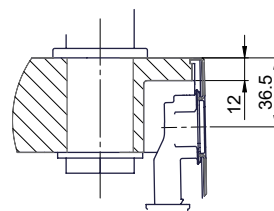


Silikonieren
 Appliquer du silicone
 Applicare il silicone

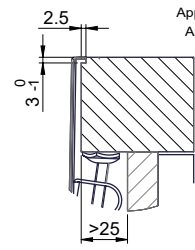
Traverse
 Transversale
 Traversa

Für 13 - 50mm Arbeitsplatte.
 Pour plan de travail de 13 - 50mm.
 Per piano di lavoro da 13 - 50mm.

X (1 : 2)

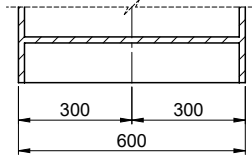
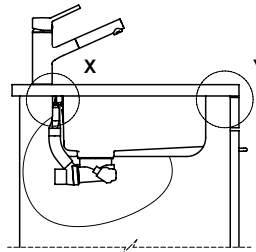
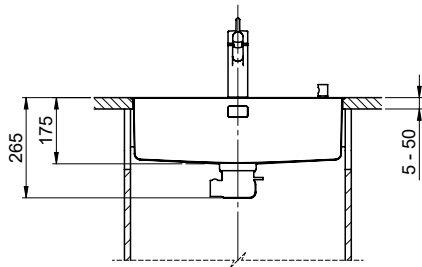


Y (1 : 2)



Silikonieren
 Appliquer du silicone
 Applicare il silicone

Traverse
 Transversale
 Traversa



Bei der Planung die Traverse im Möbel beachten!

Faites attention à la barre transversale dans les meubles lors de la planification!

Presta attenzione alla traversa nei mobili durante la pianificazione!

Vom flächenbündigen Einbau in beschichteten Spanplatten raten wir ab.

Nous vous déconseillons le montage à fleur sur des panneaux de particules enduits.

Sconsigliamo il montaggio a filo top in pannelli di truciolato laminato.

Daneo DAN 55F/7 Desino

Suter Inox AG
 Schwanenstrasse 25
 CH-1116 Schwanach-See
 T +41 82 222 64 00
 info@suterinox.ch
 suterinox.ch

Ausschnitt für flächenbündigen Einbau - Randbreite 7mm:
 Mesure de coupe pour montage à fleur - Bord de 7mm de largeur:
 Intaglio per montaggio a filo top - Larghezza bordo 7mm:

SUTER

Bohrung für Zug- und Druckknöpfe ø14
 Bohrung für Drehknopf ø25

Trou pour boutons et Pousoirs de commande ø14
 Trou pour bouton rotatif ø25

Foro per Pomelli tiranti e Pomelli pulsanti ø14
 Foro per Pomolo girevoli ø25

Für 12mm Arbeitsplatte.
 Pour plan de travail de 12 mm.
 Per piano di lavoro da 12 mm.

A-A (1 : 2)



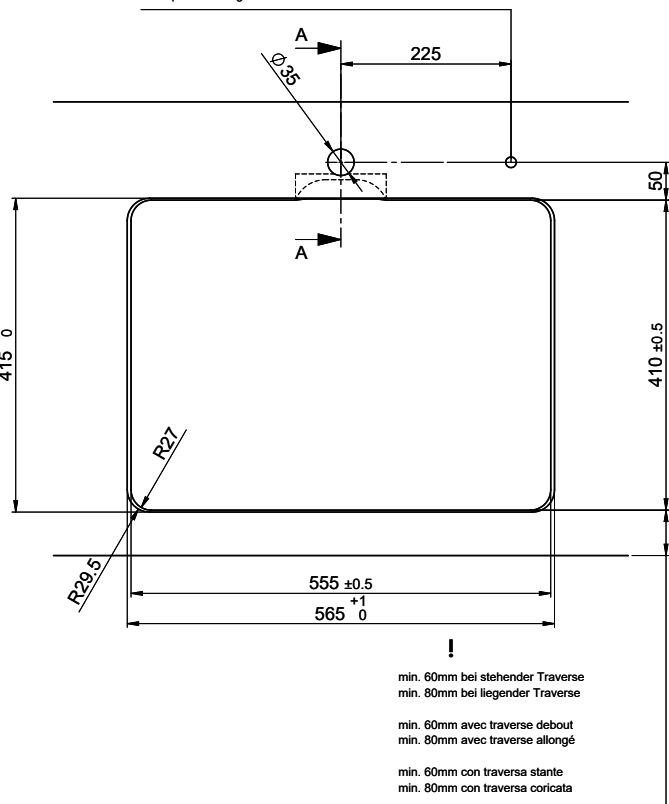
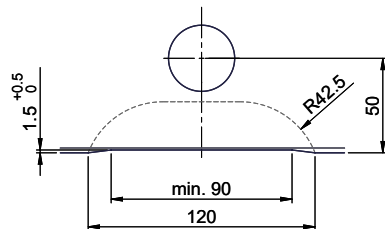
Für 13 - 30mm Arbeitsplatte.
 Pour plan de travail de 13 - 30mm.
 Per piano di lavoro da 13 - 30mm.

A-A (1 : 2)



Für 13 - 50mm Arbeitsplatte.
 Pour plan de travail de 13 - 50mm.
 Per piano di lavoro da 13 - 50mm.

A-A (1 : 2)



! min. 60mm bei stehender Traverse
 min. 80mm bei liegender Traverse
 min. 60mm avec traverse debout
 min. 80mm avec traverse allongé
 min. 60mm con traversa stante
 min. 80mm con traversa coricata

Für dieses Dokument sind den darin abgedruckten Logos keinen behaupten wir eine alle Rechte vorbehalten. Verwendungs- oder Nachdruck ohne schriftliche Genehmigung ist verboten. © Copyright 2020 Suter Inox AG. Alle Rechte vorbehalten.