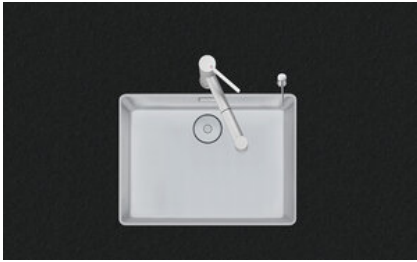


Daneo DAN 55F/7

[> Web link](#)



Fitting style
Flushmount sinks

Model
DAN 55F/7

Material
Stainless steel 18/10

Article no.
10.105.728.00

Cabinet size
60 cm

Basket
3½" Tipo Desino

Surface
Matt

Price CHF
1'544.- excl. VAT

Dimensions
550x400x175mm

Corner radius
22 mm

Overflow and drain technology



Tipo Desino:
Concealed drain with
basket underneath -
type M



Swivelling overflow
cap

Basket pre-assembly

Basket pre-assembly ex works

Dispenser - mounting option

Free choice of positioning

Overflow and drain technology

Prices (as of 09.05.26/excl. VAT)

| Model | Material | Basket | Article no. | Price CHF |
|-----------------|-----------------------------|-------------------------|---------------|-------------------|
| Daneo DAN 55F/7 | Stainless steel 18/10, Matt | 3½" Tipo Desino | 10.105.728.00 | 1'544.- > Weblink |
| | | 3½" Space-saving Desino | 10.104.660.00 | 1'544.- > Weblink |
| | | 3½" TouchFlow Desino | 10.104.659.00 | 1'754.- > Weblink |
| | | 3½" eFlow Desino | 10.104.678.00 | 1'869.- > Weblink |

Product description

Only available for flushmount installation.

Flush-mounted installation: Recommendation for the choice of worktop:

We recommend installation in worktops made of ceramic, granite, artificial stone (e.g. Corian or Varicor) or solid wood. We do not recommend installation in coated chipboard.

Cleaning

The Desino Drain Sieve is dishwasher-safe and can be cleaned completely or separately up to a maximum temperature of 65°C.

Accessory

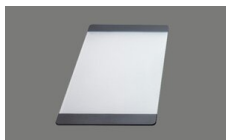
Optional accessories



> Weblink
40.000.912.00 / CHF
106.-
Colander, perforated



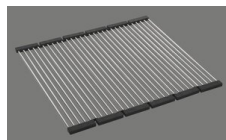
> Weblink
40.001.289.00 / CHF
106.-
Colander, unperforated



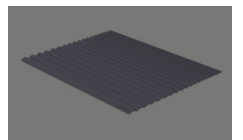
> Weblink
40.000.909.00 / CHF
151.-
Chopping board, made of
glass, white



> Weblink
40.001.277.00 / CHF
151.-
Chopping board, made of
plastic



> Weblink
40.001.138.00 / CHF
125.-
Inox Pad



> Weblink
40.002.008.00 / CHF 51.-
Maro dish drainer mat,
Dark Grey

Daneo DAN 55F7 > [Web link](#)

Spares

You can find the compatible range of spares here > [Weblink](#)

Daneo DAN 55F/7 Desino

Ausschnitt für flächenbündigen Einbau - Randbreite 7mm:
 Mesure de coupe pour montage à fleur - Bord de 7mm de largeur:
 Intaglio per montaggio a filo top - Larghezza bordo 7mm:

Bohrung für Zug- und Druckknöpfe ø14
 Bohrung für Drehknopf ø25

Trou pour boutons et Pousoirs de commande ø14
 Trou pour bouton rotatif ø25

Foro per Pomelli tiranti e Pomelli pulsanti ø14
 Foro per Pomolo girevoli ø25

Für 12mm Arbeitsplatte.
 Pour plan de travail de 12 mm.
 Per piano di lavoro da 12 mm.

A-A (1 : 2)



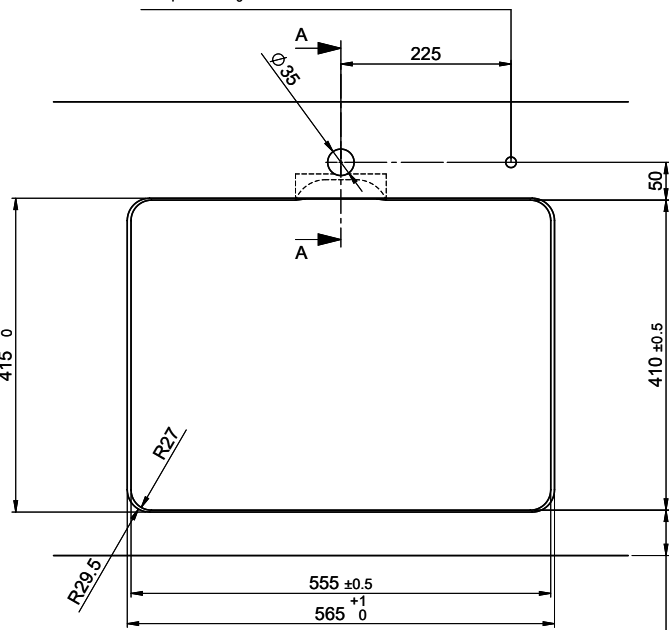
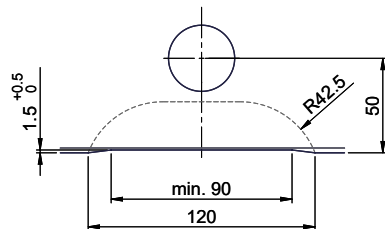
Für 13 - 30mm Arbeitsplatte.
 Pour plan de travail de 13 - 30mm.
 Per piano di lavoro da 13 - 30mm.

A-A (1 : 2)



Für 13 - 50mm Arbeitsplatte.
 Pour plan de travail de 13 - 50mm.
 Per piano di lavoro da 13 - 50mm.

A-A (1 : 2)



! min. 60mm bei stehender Traverse
 min. 80mm bei liegender Traverse
 min. 60mm avec traverse debout
 min. 80mm avec traverse allongé
 min. 60mm con traversa stante
 min. 80mm con traversa coricata

Für dieses Dokument sind den darin abgedruckten Logos keinen behaupten wir uns alle Rechte vor. Verwendbar ist, wenn es in der
 Gesamtheit verwendet wird. Vorname ohne schriftliche Zustimmung der Hersteller. © Copyright 2020 Suter Inox AG. Alle Rechte vorbehalten.