

## Samsung Food Center / Side-by-Side SBS130

[> Web link](#)

**Model**  
Samsung Food Center / Side-by-Side SBS130

**Energy efficiency class**  
E (New Label 03.21)

**Manufacturer ID**  
RS67A8811S9/WS

**Article no.**  
500.000.143.00

**Door hinge**  
right / left

**VRG**  
46.30

**Price CHF**  
1'619.- excl. VAT

## Highlights

- Digital Inverter compressor - 10-year warranty
- NoFrost+ technology - the end of de-icing
- Twin Cooling Plus - two separate cooling circuits, ideal air humidity
- Precise Cooling - for maximum temperature accuracy
- All Around Cooling - consistent temperature in the cooling chamber
- Power Cool / Power Freeze - particularly fast cooling / freezing
- Smart Conversion 5-in-1 - the right cooling and freezing mode for every situation at the touch of a button
- Water and ice dispenser
- 634 litres useable capacity

## Product description

Construction: **Standalone**  
GTIN-Nr.: **8806090805295**

**Model classification**

Energy efficiency class (from A to G): **E**  
Efficiency index: **100**  
Energy consumption per year: **351 kWh**

**Design**

Colour: **refined inox**  
Door handles: **Grip recess**

**Display and operation**

Display: **Digital indicator**  
Display and lighting: **LED, ice blue**  
Operation: **Touch control**

**Interconnection of household appliances**

Samsung Smart Home: -

**Performance properties**

**Total useable capacity: 634 L**  
Of which NoFrost: **634 L**

**Useable capacity refrigerator: 409 L**

Of which cellar refrigeration max./min.: -  
Of which cold storage compartment: -

**Useable capacity freezer: 225 L**

Freezing capacity: **15 kg in 24 hours**

Storage time in case of outage: **5 hours**

Sound power level: **36 dB(A)**

Airborne sound emission class : **C**

Climate class: **SN N ST T**

Ambient temperature (min. > max.): **from +10°C to +43°C**

De-icing process refrigerator: **Automatic**

De-icing process freezer: **Automatic**

**Construction and identification**

Stand-alone unit: **Yes**

Built-in unit: -

Undermount unit: -

Integral: -

Number of outside doors/pull-outs: **2 / -**

Door hinge: **Left, right**

**Dimensions**

Height:

## Samsung Food Center / Side-by-Side SBS130

[> Web link](#)**178 cm**Width: **91.2 cm**Depth: **71.6 cm**Width with open door/pull-out: **174,5 cm**Depth with open door/pull-out: **117 cm**Dimensions of unit (H x W x D) : **1780 x 912 x 716 mm****Empty weight**Unit weight: **112 kg****Fittings****Adjustable freezer temperature**Independent of refrigerator temperature: **Yes**Together with refrigerator temperature: **Yes**Control for continuous freezer operation: **-****Control indicators refrigerator**Regular operation: **Lamp**Temperature indicator: **Inside**Door open: **Visual / acoustic****Control indicators freezer**Regular operation: **Lamp**Continuous operation: **-**Malfunction / warning signal: **Visual / acoustic**Door open: **Visual / acoustic**Temperature indicator: **Inside****Refrigerator**Egg trays: **17**Door compartments with flap or sliding door: **1**Door shelves and/or containers: **5**Refrigerator storage surfaces: **4**- - of which adjustable: **1**Refrigerator containers: **2****Freezer**Door compartments: **2**Interior compartments: **4**Baskets, containers, interior drawers: **4**Ice cube trays: **-****Additional fittings**Door water and ice dispenser: **Yes**ClearView ice maker: **Yes**Water filter: **External, 1 unit HAFEX/EXP included in the scope of delivery**Interior lighting / energy efficiency class: **LED / G**Fruit and vegetable compartments: **2**Fresh Zone compartments: **-**Pull-out tray: **1**Wine cooler: **-**Water connection: **Yes****Cooling technology**Digital inverter compressor: **Yes**NoFrost+ technology: **Yes**Power Cool / Power Freeze: **Yes**Cool Select Plus: **-**All Around Cooling (multi-flow): **Yes**Smart Conversion 5-in-1: **Yes**Metal Cooling: **-**Twin Cooling Plus: **Yes**Precise cooling plus: **Yes**Flex zone: **-**Refrigerant: **R-600a****Power and water supply****Electrical connection**Supply voltage: **230 V**Frequency: **50 Hz**Connection values: **220 W**Fuse protection: **2.5 A**Length power connection: **2.0 m**Power plug **Plug type 12, 10 A****Water connection**Water connection: **Yes**Pressure hose G 3/4": **3/4" adapter piece included in the delivery scope**Connectable to: **all machine drain valves**Connectable to cold/hot water: **Yes / -**

Water pressure:

**Samsung Food Center / Side-by-Side SBS130**[> Web link](#)**2 to max. 8 bar**Water inlet: **5 m flexible hose**

Water outlet: -

**Technical data**Unit height: **1780 mm**Unit width: **912 mm**Unit depth: **716 mm****Packaging**Weight, incl. packaging: **117 kg**Packaging dimensions (H x W x D): **1912 x 960 x 776 mm****Accessory**

## Included accessories

[> Weblink](#)

500.000.058.00 / CHF 1.-

Water filter

## Optional accessories

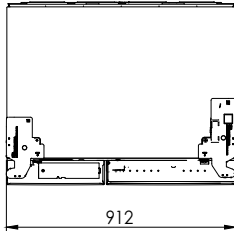
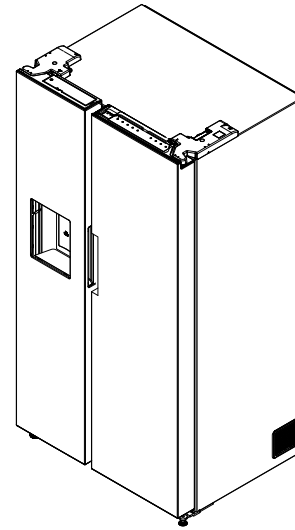
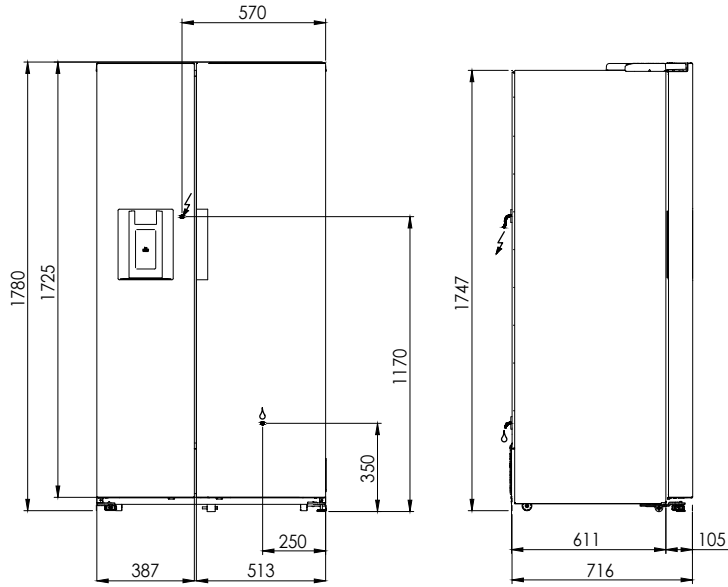
[> Weblink](#)

500.000.058.00 / CHF

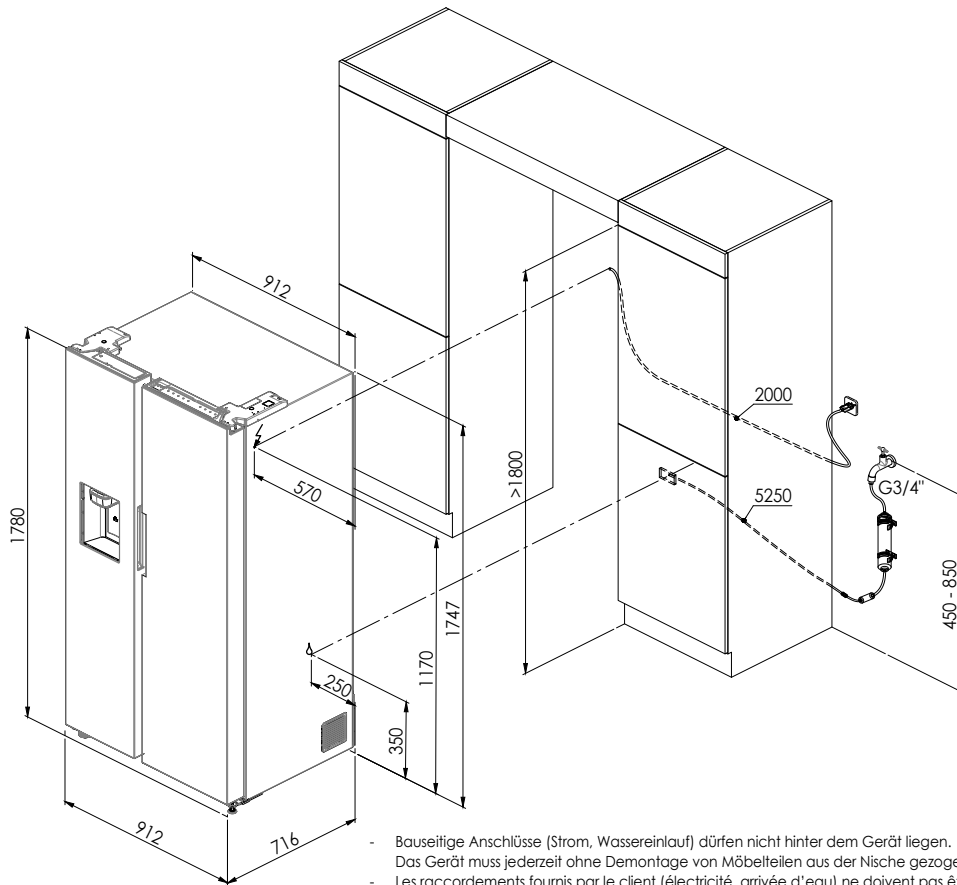
86.-

Water filter

**Spares**You can find the compatible range of spares here [> Weblink](#)



SBS130: 230 V / 2.5 A, T12, 2000 mm



- Bauseitige Anschlüsse (Strom, Wassereinlauf) dürfen nicht hinter dem Gerät liegen. Das Gerät muss jederzeit ohne Demontage von Möbelteilen aus der Nische gezogen werden können.
- Les raccordements fournis par le client (électricité, arrivée d'eau) ne doivent pas être situés derrière l'appareil. L'appareil doit pouvoir être extrait de la niche sans démonter aucun élément du meuble.
- Gli allacciamenti a cura del committente (elettricità, entrata dell'acqua) non devono trovarsi dietro l'apparecchio. Dev'essere sempre possibile estrarre l'apparecchio dalla nicchia senza smontare parti di mobili.



SBS130: 230 V / 2.5 A, T12, 2000 mm

