

Samsung Food Center / Side-by-Side SBS165

[> Web link](#)

Model
Samsung Food Center / Side-by-Side SBS165

Energy efficiency class
D (New Label 03.21)

Manufacturer ID
RH69CG895DB1WS

Article no.
500.000.183.00

Door hinge
right / left

VRG
46.30

Price CHF
2'993.- excl. VAT

Highlights

- Digital Inverter compressor - 10-year warranty
- Beverage Showcase - In-Door Beverage Centre with Ice, Water & Autofill Pitcher
- Dual Ice Maker - 1.4 Kg ice cubes / 1.4 Kg crushed ice
- NoFrost+ technology - the end of de-icing
- Twin Cooling Plus - two separate cooling circuits, ideal air humidity
- Metal Cooling - to prevent cold air from escaping
- Precise Cooling - for maximum temperature accuracy
- All Around Cooling - consistent temperature in the cooling chamber
- Power Cool / Power Freeze - particularly fast cooling / freezing
- Smart Conversion 5-in-1 - the right cooling and freezing mode for every situation at the touch of a button
- Water dispenser and automatic refill (water jug 1.4 L)
- SpaceMax - More useful capacity
- 645 litres useable capacity

Product description

Type : **Standalone**

GTIN-Nr.: **8806095006512**

Model classification

Energy efficiency class (A to G): **D**

Efficiency index: **80**

Energy consumption in 365 days¹ (kWh): **284 kWh**

Design

Color: **Anthracite**

Door handles: **Grip recess**

Performance properties

Total useable capacity: 645 L

Of which NoFrost: **645 L**

Useable capacity refrigerator: 403 L

Of which cellar refrigeration max./min.: -

Of which cold storage compartment: -

Useable capacity freezer: 242 L

Freezing capacity: **16 kg in 24 Std.**

Storage time in case of outage: **5 Std.**

Sound power level: **35 dB(A)**

Airborne sound emission class: **B**

Climate class: **SN, N, ST, T**

De-icing process refrigerator: **Automatic**

De-icing process freezer: **Automatic**

Construction and identification

Stand-alone unit: **Yes**

Built-in unit: -

Undermount unit: -

Integral: -

Number of outside doors/pull-outs:

2 / 4

Door hinge: **Left, right****Dimensions**Height: **178 cm**Width: **91.2 cm**Depth: **71.6 cm**

Width with open door/pull-out: -

Depth with open door/pull-out: -

Empty weight

Unit weight: **115 kg****Fittings****Adjustable freezer temperature**Independent of refrigerator temperature: **Yes**Together with refrigerator temperature: **Yes**

Control for continuous freezer operation: -

Control indicators refrigerator

Regular operation: **Lamp**Temperature indicator: **Inside**Door open: **After 2 min. acoustic****Control indicators freezer**

Regular operation: -

Continuous operation: -

Fault | warning signal

Door open: **Acoustic warning signal**Temperature display: **Yes****Refrigerator**Egg trays: **Yes**

Door compartments with flap or sliding door: -

Door shelves and/or containers: **4**Shelves in the refrigerator compartment: **5**- of which adjustable: **1**Containers in the refrigerator compartment: **3**

Freezer compartment

Compartments in the door: **5**

Compartments in the interior : **3**

- max. compartment height in interior

Baskets, containers, drawers in the interior: **2**

Ice cubes (kg/day) **1.4 kg cubed ice, 1.4 kg ice bites**

Equipment

Icemaker in door: **Yes (beverage centre)**

Internal lighting(class): **LED (top) (G)**

Water filter: **External | HAFEX / EXP**

Fruit a. veget. Compartments: **3 (Take out tray)**

Fully removable drawers: **5**

Water dispenser (internal): **Yes (incl. 1.4l water jug)**

5-in-1 smart conversion: **Yes**

Pull-out shelf: **Yes**

Flexible shelf: **Yes**

Wine compartment: **Yes (5 bottles max.)**

Refrigeration technology

Digital Inverter Compressor: **Yes**

NoFrost+-Technology: **Yes**

Power Cool / Power Freeze: **Yes / Yes**

Metal Cooling: **Yes**

Twin Cooling: **Yes**

Precise Cooling: **Yes**

Refrigerant: **R-600a**

Electrical connection

Supply voltage:

Samsung Food Center / Side-by-Side SBS165[> Web link](#)**230 V**Frequency: **50 Hz**Connection values: **220 W**Fuse protection: **2.5 A****Technical data**Unit height: **1780 mm**Unit width: **912 mm**Unit depth: **716 mm****Packaging**Weight, incl. packaging: **120 kg**Packaging dimensions (H x W x D): **1912 x 980 x 776 mm****Accessory**

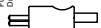
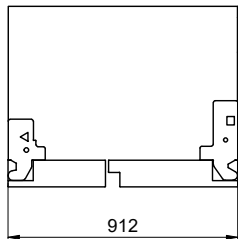
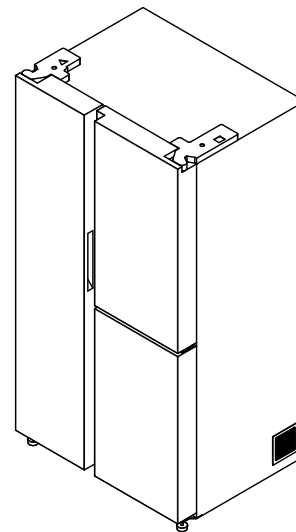
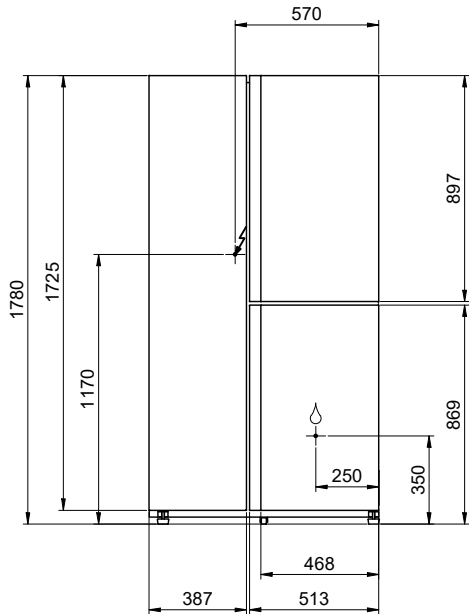
Optional accessories

[> Weblink](#)

500.000.058.00 / CHF

86.-

Water filter

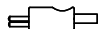
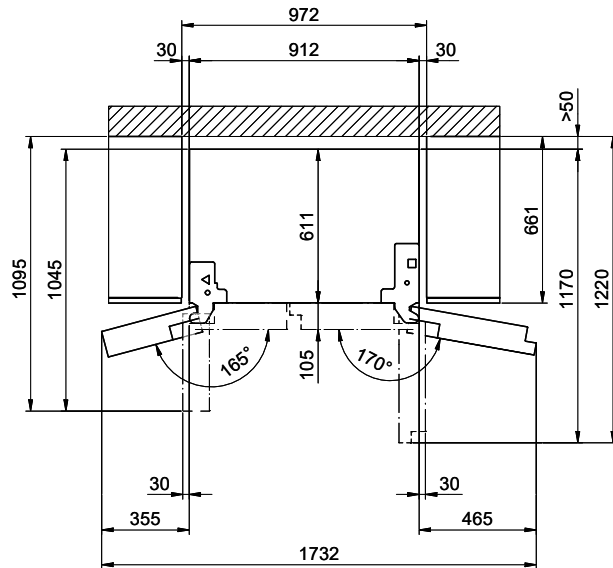
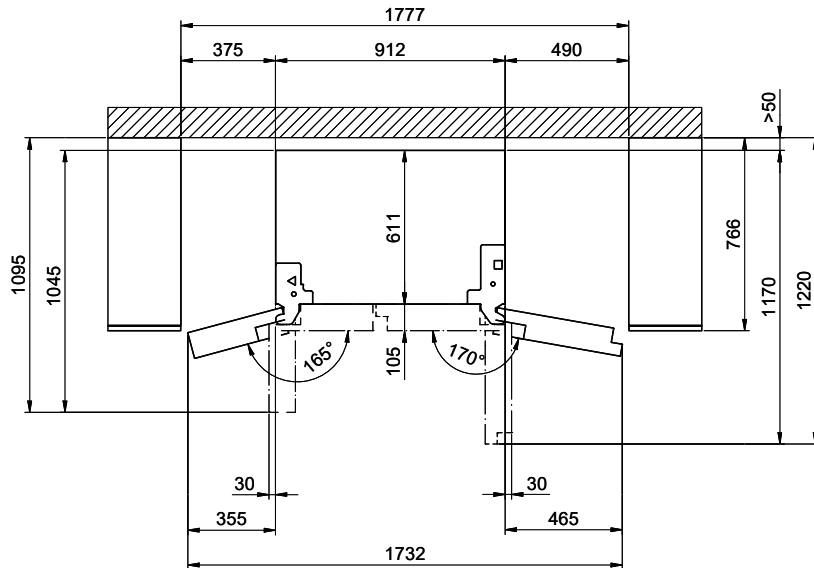


SBS165: 230V / 2.5A, T12, 2000mm

Für dieses Dokument und die darin abgezeichneten Gegenstände behalten wir uns alle Rechte vor. Verantwortlich: Baureiseperson
 Bitte ohne Verwendung dieses Symbols, ohne unsere Zustimmung, in keinem: © Copyright 2000 Suter Inox AG. All rights reserved.

Frontbündig
 Façade affleurante
 A filo sulla parte anteriore

Gehäusebündig
 Carrosserie affleurante
 A filo con l'alloggiamento



SBS165: 230V / 2.5A, T12, 2000mm