

Linero LIO 18F/7

[> Web link](#)



Fitting style
Flushmount sinks

Model
LIO 18F/7

Material
Stainless steel 18/10

Article no.
10.105.654.00

Cabinet size
35 cm

Basket
3½" Tipo

Surface
Matt

Price CHF
987,- excl. VAT

Dimensions
180x400x140mm

Corner radius
15 mm

Overflow and drain technology



Sieve - type M



Swivelling overflow cap

Basket pre-assembly
Basket pre-assembly ex works

Dispenser - mounting option
Free choice of positioning

Overflow and drain technology

Prices (as of 06.05.26/excl. VAT)

Model	Material	Basket	Article no.	Price CHF
Linero LIO 18F/7	Stainless steel 18/10, Matt	3½" Tipo	10.105.654.00	987,- > Weblink

Accessory

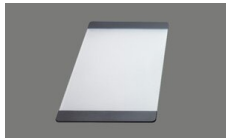
Optional accessories



[> Weblink](#)
40.000.912.00 / CHF 106,-
Colander, perforated



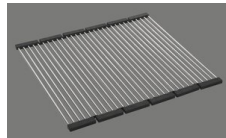
[> Weblink](#)
40.001.289.00 / CHF 106,-
Colander, unperforated



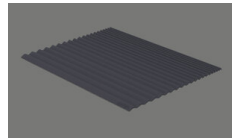
[> Weblink](#)
40.000.909.00 / CHF 151,-
Chopping board, made of glass, white



[> Weblink](#)
40.001.277.00 / CHF 151,-
Chopping board, made of plastic



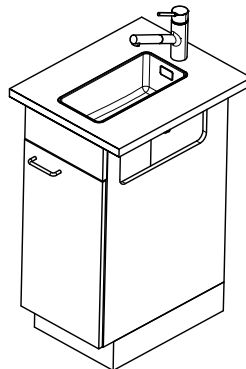
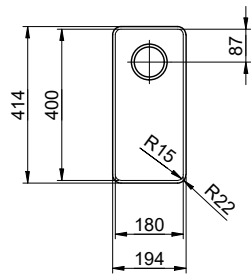
[> Weblink](#)
40.001.138.00 / CHF 125,-
Inox Pad



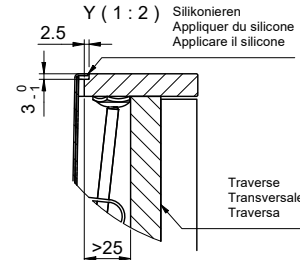
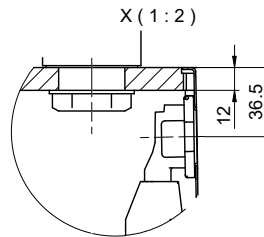
[> Weblink](#)
40.002.008.00 / CHF 51,-
Maro dish drainer mat, Dark Grey

Linero LIO 18F/7 Desino

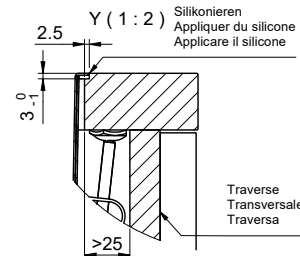
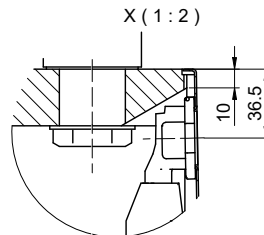
Randbreite 7mm
 Bord de 7mm de largeur
 Larghezza bordo 7mm



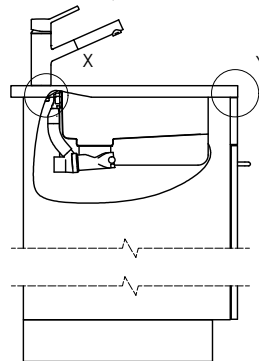
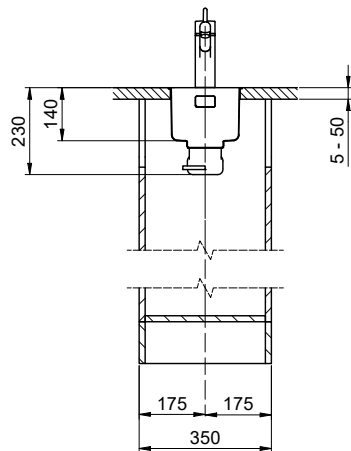
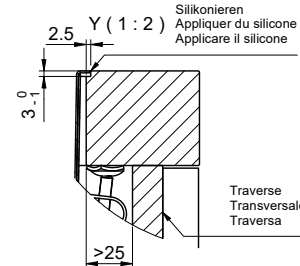
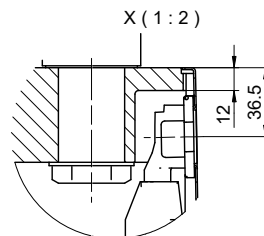
Für 12mm Arbeitsplatte.
 Pour plan de travail de 12mm.
 Per piano di lavoro da 12mm.



Für 13 - 30mm Arbeitsplatte.
 Pour plan de travail de 13 - 30mm.
 Per piano di lavoro da 13 - 30mm.



Für 13 - 50mm Arbeitsplatte.
 Pour plan de travail de 13 - 50mm.
 Per piano di lavoro da 13 - 50mm.



Bei der Planung die Traverse im Möbel beachten!

Faites attention à la barre transversale dans les meubles lors de la planification!

Presta attenzione alla traversa nei mobili durante la pianificazione!

Vom flächenbündigen Einbau in beschichtete Spanplatten raten wir ab.

Nous vous déconseillons le montage à fleur sur des panneaux de particules enduits.

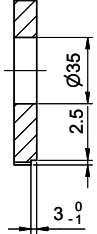
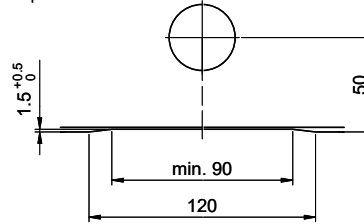
Sconsigliamo il montaggio a filo top in pannelli di truciolato laminato.

Linero LIO 18F/7 Desino

Ausschnitt für flächenbündigen Einbau - Randbreite 7mm:
Mesure de coupure pour montage à fleur - Bord de 7mm de largeur:
Intaglio per montaggio a filo top - Larghezza bordo 7mm:

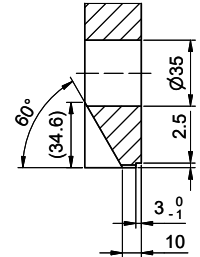
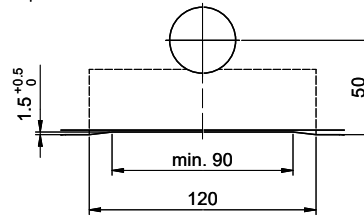
A-A (1 : 2)

Für 12mm Arbeitsplatte.
 Pour plan de travail de 12mm.
 Per piano di lavoro da 12mm.

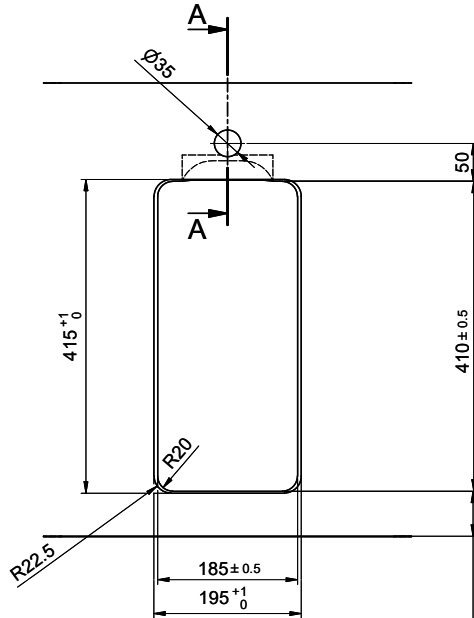
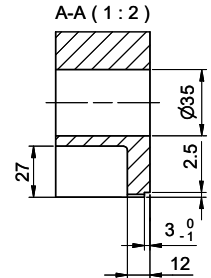
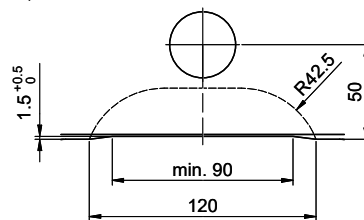


A-A (1 : 2)

Für 13 - 30mm Arbeitsplatte.
 Pour plan de travail de 13 - 30mm.
 Per piano di lavoro da 13 - 30mm.



Für 13 - 50mm Arbeitsplatte.
 Pour plan de travail de 13 - 50mm.
 Per piano di lavoro da 13 - 50mm.



min. 60mm bei stehender Traverse.
 min. 80mm bei liegender Traverse.
 min. 60mm avec traverse debout.
 min. 80mm avec traverse allongé.
 min. 60mm con traversa stante.
 min. 80mm con traversa coricata.