

Linero LIO 34F/7

[> Web link](#)



Fitting style
Flushmount sinks

Model
LIO 34F/7

Material
Stainless steel 18/10

Article no.
10.105.237.00

Cabinet size
40 cm

Basket
3½" Space-saving Desino

Surface
Matt

Price CHF
1'498.- excl. VAT

Dimensions
340x400x175mm

Corner radius
15 mm

Overflow and drain technology



Desino: Concealed drain with basket underneath - type M



Swivelling overflow cap

Basket pre-assembly

Basket pre-assembly ex works

Dispenser - mounting option

Free choice of positioning

Overflow and drain technology

Standard pull-up knob



Advant

Prices (as of 13.05.26/excl. VAT)

Model	Material	Basket	Article no.	Price CHF	
Linero LIO 34F/7	Stainless steel 18/10, Matt	3½" Tipo Desino	10.105.655.00	1'498.-	> Weblink
		3½" Space-saving Desino	10.105.237.00	1'498.-	> Weblink
		3½" TouchFlow Desino	10.105.236.00	1'708.-	> Weblink
		3½" eFlow Desino	10.105.235.00	1'823.-	> Weblink

Product description

The Desino Drain Sieve is dishwasher-safe and can be cleaned completely or separately up to a maximum temperature of 65°C.

Accessory

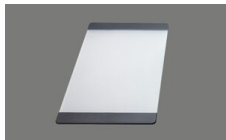
Optional accessories



[> Weblink](#)
40.000.912.00 / CHF 106.-
Colander, perforated



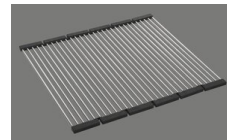
[> Weblink](#)
40.001.289.00 / CHF 106.-
Colander, unperforated



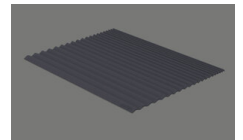
[> Weblink](#)
40.000.909.00 / CHF 151.-
Chopping board, made of glass, white



[> Weblink](#)
40.001.277.00 / CHF 151.-
Chopping board, made of plastic



[> Weblink](#)
40.001.138.00 / CHF 125.-
Inox Pad



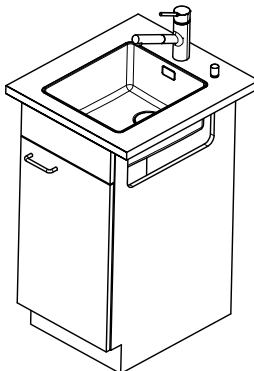
[> Weblink](#)
40.002.008.00 / CHF 51.-
Maro dish drainer mat, Dark Grey

Spares

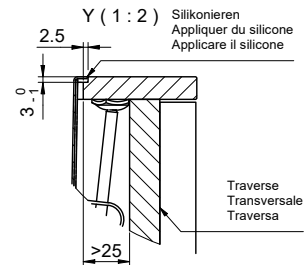
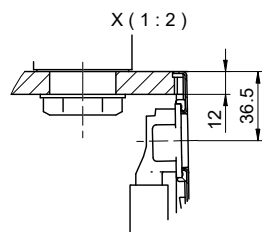
You can find the compatible range of spares here [> Weblink](#)

Linero LIO 34F/7 Desino

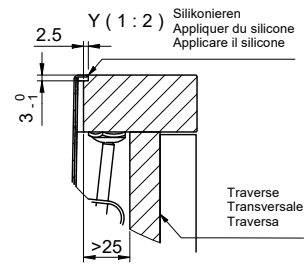
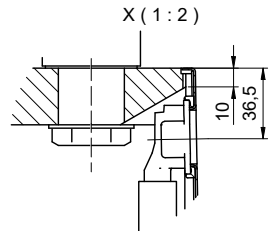
Randbreite 7mm
Bord de 7mm de largeur
Larghezza bordo 7mm



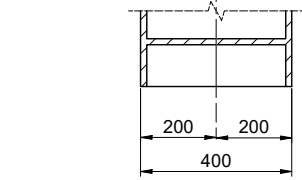
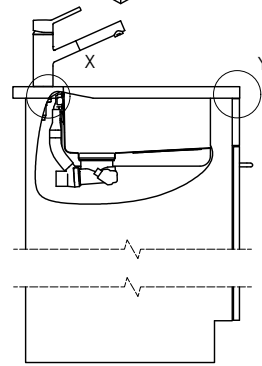
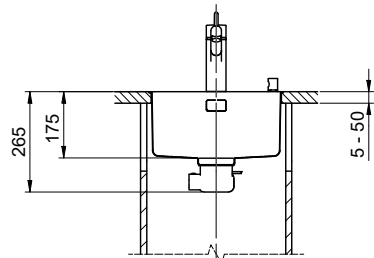
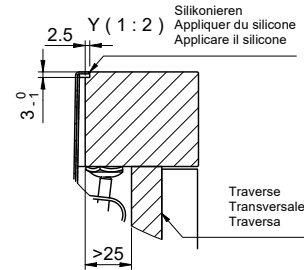
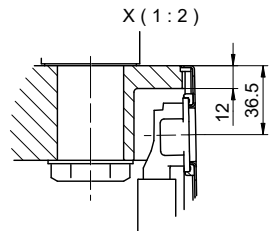
Für 12mm Arbeitsplatte.
 Pour plan de travail de 12mm.
 Per piano di lavoro da 12mm.



Für 13 - 30mm Arbeitsplatte.
 Pour plan de travail de 13 - 30mm.
 Per piano di lavoro da 13 - 30mm.



Für 13 - 50mm Arbeitsplatte.
 Pour plan de travail de 13 - 50mm.
 Per piano di lavoro da 13 - 50mm.



Bei der Planung die Traverse im Möbel beachten!

Faites attention à la barre transversale dans les meubles lors de la planification!

Presta attenzione alla traversa nei mobili durante la pianificazione!

Vom flächenbündigen Einbau in beschichtete Spanplatten raten wir ab.

Nous vous déconseillons le montage à fleur sur des panneaux de particules enduits.

Sconsigliamo il montaggio a filo top in pannelli di truciolato laminato.

Für dieses Dokument und die darin abgewehrten Gegenstände behalten wir uns alle Rechte vor. Verwendung, Belohnung oder Weiterverbreitung ist ohne unsere Zustimmung in jedem Fall untersagt. © Copyright 2003 Suter Inox AG. All rights reserved.

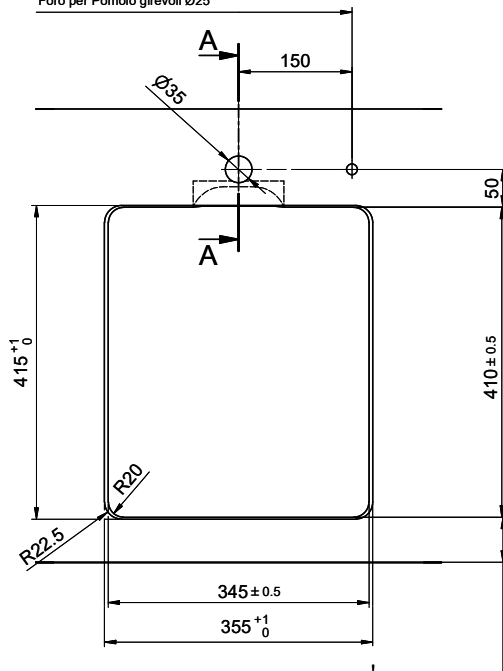
Linero LIO 34F/7 Desino

Ausschnitt für flächenbündigen Einbau - Randbreite 7mm:
Mesure de coupure pour montage à fleur - Bord de 7mm de largeur:
Intaglio per montaggio a filo top - Larghezza bordo 7mm:

Bohrung für Zug- und Druckknöpfe Ø14
 Bohrung für Drehknopf Ø25

Trou pour boutons et Pousoirs de commande Ø14
 Trou pour bouton rotatif Ø25

Foro per Pomelli tiranti e Pomelli pulsanti Ø14
 Foro per Pomolo girevoli Ø25

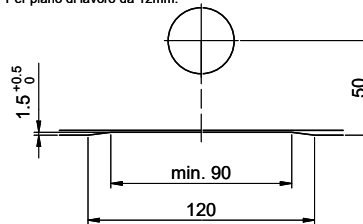


min. 60mm bei stehender Traverse.
 min. 80mm bei liegender Traverse.

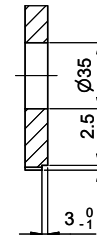
min. 60mm avec traverse debout.
 min. 80mm avec traverse allongé.

min. 60mm con traversa stante.
 min. 80mm con traversa coricata.

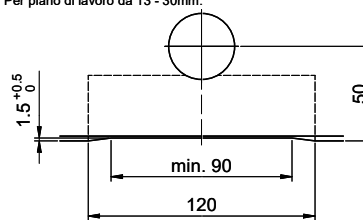
Für 12mm Arbeitsplatte.
 Pour plan de travail de 12mm.
 Per piano di lavoro da 12mm.



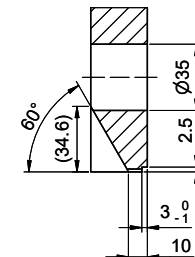
A-A (1 : 2)



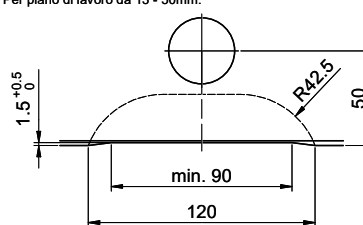
Für 13 - 30mm Arbeitsplatte.
 Pour plan de travail de 13 - 30mm.
 Per piano di lavoro da 13 - 30mm.



A-A (1 : 2)



Für 13 - 50mm Arbeitsplatte.
 Pour plan de travail de 13 - 50mm.
 Per piano di lavoro da 13 - 50mm.



A-A (1 : 2)

