

## Linero LIO 45U

[> Web link](#)



**Fitting style**  
Undermount bowls

**Model**  
LIO 45U

**Material**  
Stainless steel 18/10

**Article no.**  
10.105.226.00

**Cabinet size**  
50 cm

**Basket**  
3½" Space-saving Desino

**Surface**  
Matt

**Price CHF**  
1'353.- excl. VAT

**Dimensions**  
450x400x175mm

**Corner radius**  
15 mm

### Overflow and drain technology



Desino: Concealed drain with basket underneath - type M



Swivelling overflow cap

**Basket pre-assembly**  
Basket pre-assembly ex works

**Dispenser - mounting option**  
Free choice of positioning

**Overflow and drain technology**  
**Standard pull-up knob**



Advant

### Prices (as of 09.05.26/excl. VAT)

Model	Material	Basket	Article no.	Price CHF	
Linero LIO 45U	Stainless steel 18/10, Matt	3½" Tipo Desino	10.105.547.00	1'353.-	<a href="#">&gt; Weblink</a>
		3½" Space-saving Desino	10.105.226.00	1'353.-	<a href="#">&gt; Weblink</a>
		3½" TouchFlow Desino	10.105.225.00	1'563.-	<a href="#">&gt; Weblink</a>
		3½" eFlow Desino	10.105.224.00	1'678.-	<a href="#">&gt; Weblink</a>

### Product description

The Desino Drain Sieve is dishwasher-safe and can be cleaned completely or separately up to a maximum temperature of 65°C.

### Accessory

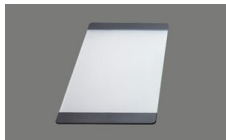
#### Optional accessories



[> Weblink](#)  
40.000.912.00 / CHF 106.-  
Colander, perforated



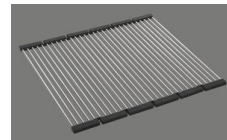
[> Weblink](#)  
40.001.289.00 / CHF 106.-  
Colander, unperforated



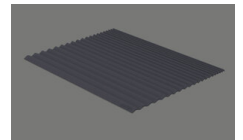
[> Weblink](#)  
40.000.909.00 / CHF 151.-  
Chopping board, made of glass, white



[> Weblink](#)  
40.001.277.00 / CHF 151.-  
Chopping board, made of plastic



[> Weblink](#)  
40.001.138.00 / CHF 125.-  
Inox Pad



[> Weblink](#)  
40.002.008.00 / CHF 51.-  
Maro dish drainer mat, Dark Grey

### Spares

You can find the compatible range of spares here [> Weblink](#)

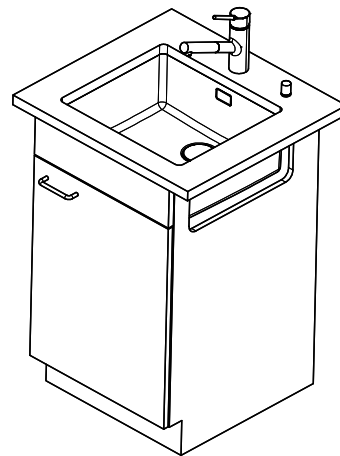
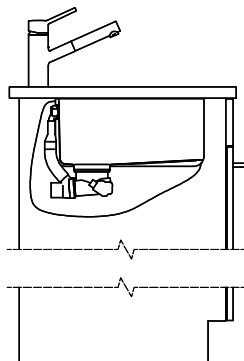
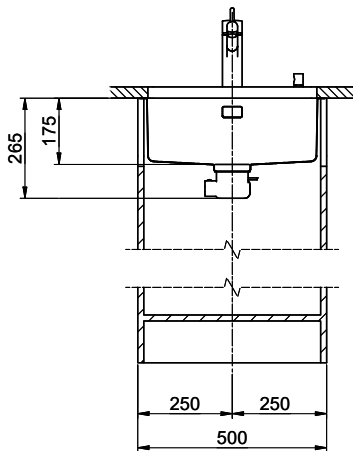
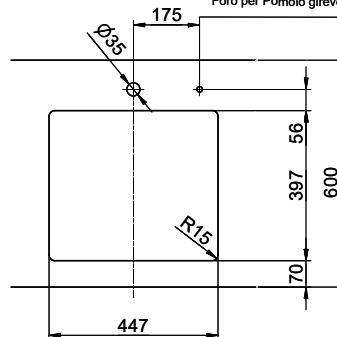
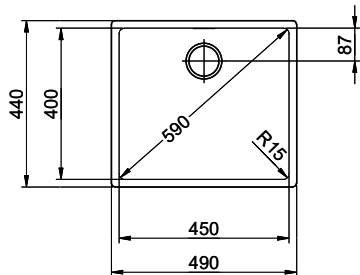
Suter Inox AG  
 Schächterstrasse 20  
 CH-1214 Erlenbach-Brugg  
 +41 58 230 84 00  
 suter@redal.ch  
 suter.ch

# Linero LIO 45U Desino

Masse / Ausschnittkontur  
 Dimensions / contour de découpe  
 Dimensioni / contorno dell'apertura



Bohrung für Zug- und Druckknöpfe Ø14  
 Bohrung für Drehknopf Ø25  
 Trou pour boutons et Pousoirs de commande Ø14  
 Trou pour bouton rotatif Ø25  
 Foro per Pomelli tiranti e Pomelli pulsanti Ø14  
 Foro per Pomolo girevoli Ø25



Für dieses Dokument und die darin abgezeichneten Gegenstände behalten wir uns alle Rechte vor. Verwendet werden dürfen diese ohne Veränderung seines Inhalts, ohne unsere Zustimmung in keinem Fall. © Copyright 2010 Suter Inox AG. All rights reserved.

Zeichn.Nr.:

Dok.Nr.: 00.01-23.0030.00.00

Index:

sam

12.09.2023