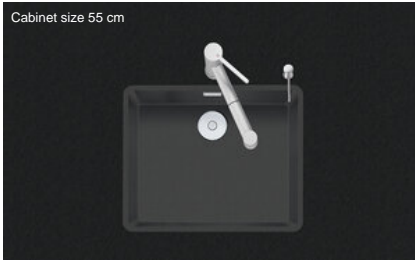


## Linero LIO CD 50F/17

[> Web link](#)



**Fitting style**  
Flushmount sinks

**Model**  
LIO CD 50F/17

**Material**  
Cristadur

**Article no.**  
10.105.676.00

**Cabinet size**  
55 cm

**Basket**  
3½" Tipo Desino

**Color**  
Puro

**Price CHF**  
1'437.- excl. VAT

**Dimensions**  
500x400x165mm

**Corner radius**  
15 mm

### Overflow and drain technology



Tipo Desino:  
Concealed drain with  
basket underneath -  
type M, for granite  
sinks



Swivelling overflow  
cap for granite sinks

### Basket pre-assembly

Basket pre-assembly ex works

### Dispenser - mounting option

Free choice of positioning

### Overflow and drain technology

Standard pull-up knob

### Prices (as of 21.06.26/excl. VAT)

Model	Material	Basket	Article no.	Price CHF
Linero LIO CD 50F/17 Puro	Cristadur, Puro	3½" Tipo Desino	10.105.676.00	1'437.- > Weblink
		3½" Space-saving Desino	10.105.289.00	1'437.- > Weblink
		3½" TouchFlow Desino	10.105.288.00	1'647.- > Weblink

### Accessory

#### Optional accessories



> Weblink  
40.000.912.00 / CHF  
106.-  
Colander, perforated



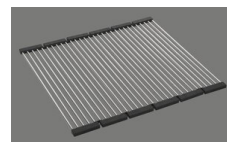
> Weblink  
40.001.289.00 / CHF  
106.-  
Colander, unperforated



> Weblink  
40.000.909.00 / CHF  
151.-  
Chopping board, made of  
glass, white



> Weblink  
40.001.277.00 / CHF  
151.-  
Chopping board, made of  
plastic



> Weblink  
40.001.138.00 / CHF  
125.-  
Inox Pad



> Weblink  
40.001.509.00 / CHF 29.-  
Easy Care cleaning kit  
for granite sinks

### Spares

You can find the compatible range of spares here [> Weblink](#)

# Linero LIO CD 50F/ 17 Desino

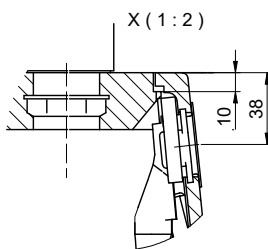
Randbreite 17mm  
 Bord de 17mm de largeur  
 Larghezza bordo 17mm



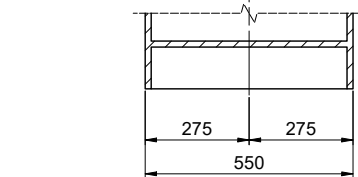
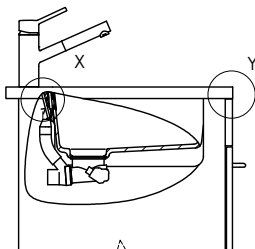
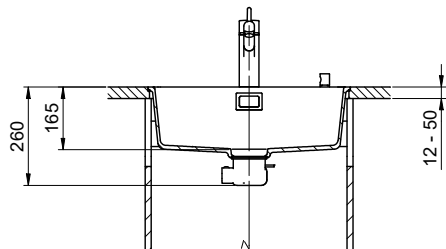
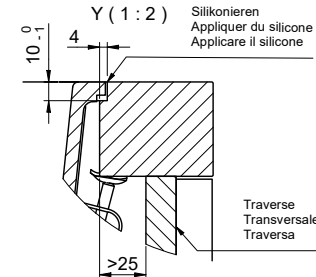
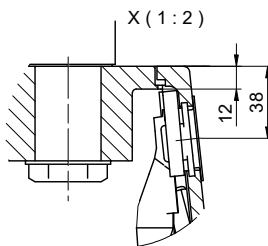
Für 12mm Arbeitsplatte.  
 Pour plan de travail de 12mm.  
 Per piano di lavoro da 12mm.



Für 13 - 30mm Arbeitsplatte.  
 Pour plan de travail de 13 - 30mm.  
 Per piano di lavoro da 13 - 30mm.



Für 13 - 50mm Arbeitsplatte.  
 Pour plan de travail de 13 - 50mm.  
 Per piano di lavoro da 13 - 50mm.



Bei der Planung die Traverse im Möbel beachten!

Faites attention à la barre transversale dans les meubles lors de la planification!

Presta attenzione alla traversa nei mobili durante la pianificazione!

Vom flächenbündigen Einbau in beschichtete Spanplatten raten wir ab.

Nous vous déconseillons le montage à fleur sur des panneaux de particules enduits.

Sconsigliamo il montaggio a filo top in pannelli di truciolato laminato.

# Linero LIO CD 50F/ 17 Desino

**Ausschnitt für flächenbündigen Einbau - Randbreite 17mm:**  
**Mesure de coupure pour montage à fleur - Bord de 17mm de largeur:**  
**Intaglio per montaggio a filo top - Larghezza bordo 17mm:**

Bohrung für Zug- und Druckknöpfe Ø14  
 Bohrung für Drehknopf Ø25

Trou pour boutons et Poussoirs de commande Ø14  
 Trou pour bouton rotatif Ø25

Foro per Pomelli tiranti e Pomelli pulsanti Ø14  
 Foro per Pomolo girevoli Ø25

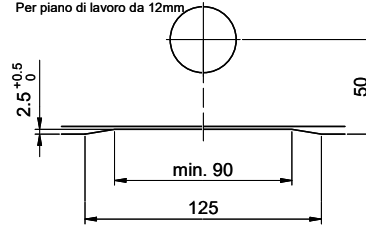


min. 60mm bei stehender Traverse.  
 min. 80mm bei liegender Traverse.

min. 60mm avec traverse debout.  
 min. 80mm avec traverse allongé.

min. 60mm con traversa stante.  
 min. 80mm con traversa coricata.

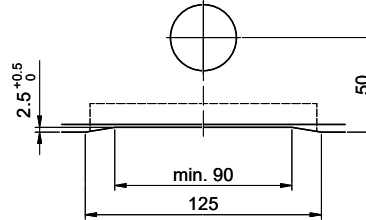
Für 12mm Arbeitsplatte.  
 Pour plan de travail de 12mm.  
 Per piano di lavoro da 12mm



A-A (1 : 2)



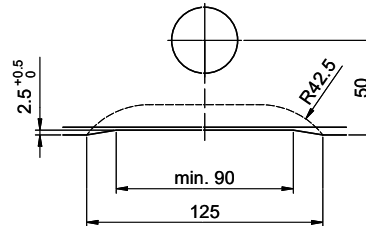
Für 13 - 30mm Arbeitsplatte.  
 Pour plan de travail de 13 - 30mm.  
 Per piano di lavoro da 13 - 30mm.



A-A (1 : 2)



Für 13 - 50mm Arbeitsplatte.  
 Pour plan de travail de 13 - 50mm.  
 Per piano di lavoro da 13 - 50mm.



A-A (1 : 2)

