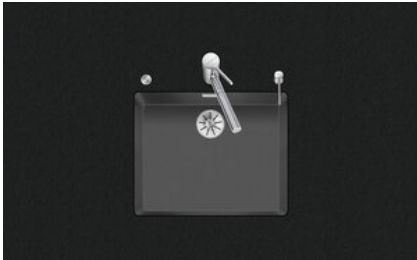


Linero LIO CD 50U/1

[> Web link](#)



Fitting style
Undermount bowls

Model
LIO CD 50U/1

Material
Cristadur

Article no.
10.106.247.00

Cabinet size
60 cm

Basket
3½" Space-saving

Color
Stone

Price CHF
1'274.- excl. VAT

Dimensions
500x400x165mm

Corner radius
15 mm

Overflow and drain technology



Sieve - type M, for granite sinks



Swivelling overflow cap for granite sinks

Basket pre-assembly

Basket pre-assembly ex works

Dispenser - mounting option

Free choice of positioning

Overflow and drain technology

Standard push knob



Push knob, chrome

Prices (as of 21.06.26/excl. VAT)

Model	Material	Basket	Article no.	Price CHF
Linero LIO CD 50U/1 Stone	Cristadur, Stone	3½" Tipo	10.105.571.00	1'188.- > Weblink
		3½" Space-saving	10.105.570.00	1'229.- > Weblink
		3½" Space-saving	10.106.247.00	1'274.- > Weblink
		3½" TouchFlow	10.105.569.00	1'427.- > Weblink

Accessory

Optional accessories



> Weblink
40.000.912.00 / CHF 106.-
Colander, perforated



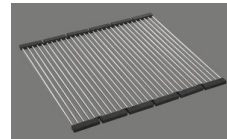
> Weblink
40.001.289.00 / CHF 106.-
Colander, unperforated



> Weblink
40.000.909.00 / CHF 151.-
Chopping board, made of glass, white



> Weblink
40.001.277.00 / CHF 151.-
Chopping board, made of plastic



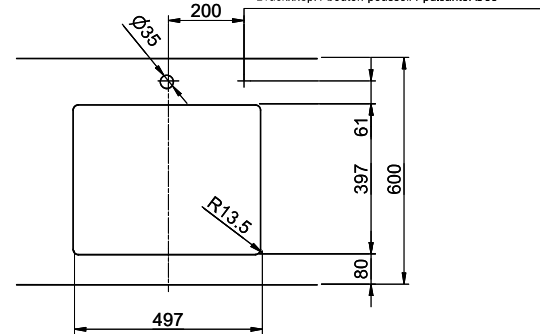
> Weblink
40.001.138.00 / CHF 125.-
Inox Pad



> Weblink
40.001.509.00 / CHF 29.-
Easy Care cleaning kit for granite sinks

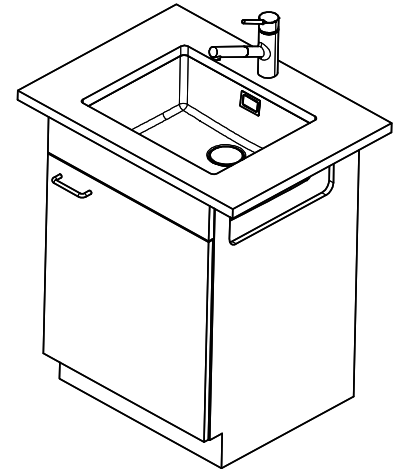
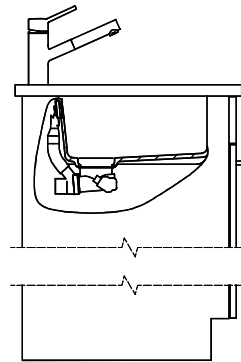
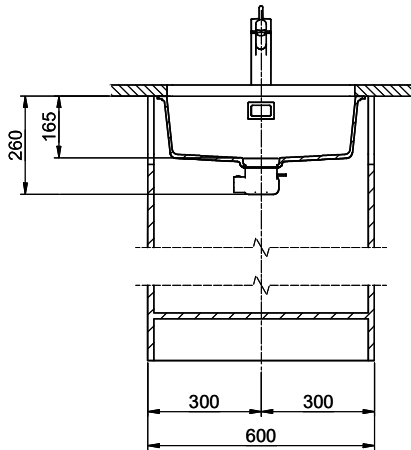
Spares

You can find the compatible range of spares here [> Weblink](#)



Bohrung nur für externe Ventil-Bedienung;
 Perçage uniquement pour une utilisation externe de la soupape;
 Foratura solo per uso esterno della piletta;

Zugknopf / bouton de commande / pomolo: Ø14
 Drehknopf / bouton rotatif / pomolo girevole: Ø25
 Druckknopf / bouton-poussoir / pulsante: Ø35



Für dieses Dokument sind dies keine dargestellten Gegenstände behalten wir uns alle Rechte vor. Verwendung, Weitergabe an
 Dritte oder Vervielfältigung dieser Inhalte, ohne unsere Zustimmung ist verboten. © Copyright 2020 Suter Inox AG. All rights reserved.