

SF 150 Flat duct mount[> Web link](#)**Article no.**
40.001.906.00**Price CHF**
35.- excl. VAT**Product description****Naber Compair Steel flow SF 150 Flat duct mount****Galvanised steel**

For laying the flat ducts on ceilings and walls
With damping
Recommended distance between two mounts 500 mm
Suitable for flat ducts SF-VRO flex and SF-VRO

Planning Tips

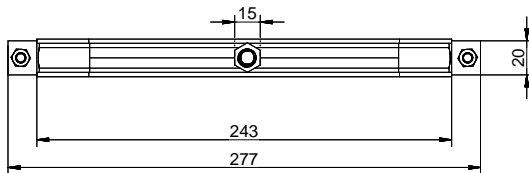
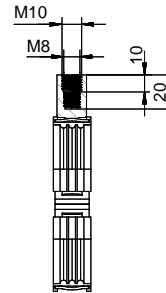
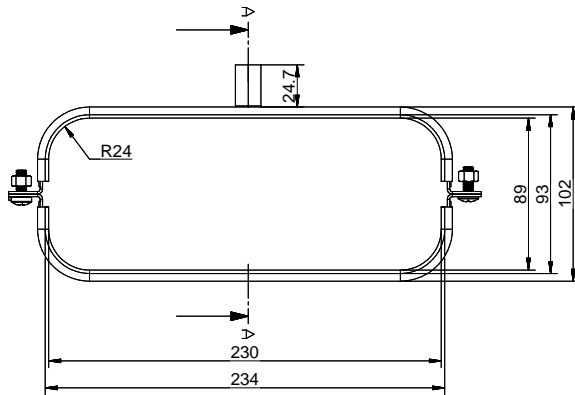
To connect Naber Steel Flow (connection 222 x 89 mm) to BORA Ecotube (connection 245 x 89 mm), a Steel Flow adapter (SA-BA 150 adapter, 40.001.002) is available / to be ordered separately.

Naber Compair Steel flow SF 150 Flat Duct Holder**Galvanized steel**

For laying the flat duct on ceilings and walls With damping Recommended distance between two holders: 500 mm Suitable for SF-VRO flex and SF-VRO flat ducts

Planning note

To connect Naber Steel flow (connection 222 x 89 mm) with BORA Ecotube (connection 245 x 89 mm), a Steel Flow Adapter (SA-BA 150 Adapter 40.002.002.00) is available / can be ordered separately.



Kundenzeichnung	Maße in mm Dimensions in millimeters	Wahrgabe und Verfertigung, Sowie Verwertung und Metallurgie dieser Zeichnung ist nicht garantiert, soweit nicht ausdrücklich erlaubt. Alle Rechte vorbehalten!		Maßstab Scale	Menge Quantity
				1:2	1
-	-	-	-	Rohstoff/Raw material	
				Stahlblech verzinkt	
				Benennung/Designation	
				Compair Steel Flow	
				SF 150 Flachkanalhalterung	
				Sachnummer/Part-No.	
				4061022	
Autor/ Author	Änderung/ Modification	Datum/ Date	Name/ Name		

