

**Silver Star SIL 45IF/12**

[> Web link](#)



**Fitting style**  
Flushmount sinks / Flat-mount inset

**Model**  
SIL 45IF/12

**Material**  
Stainless steel 18/10

**Article no.**  
10.104.255.00

**Cabinet size**  
50 cm

**Basket**  
3½" Space-saving

**Surface**  
Matt

**Price CHF**  
937.- excl. VAT

**Dimensions**  
450x420x175mm

**Corner radius**  
50 mm

**Overflow and drain technology**



Sieve - type S



Concealed overflow

**Dispenser - mounting option**  
Free choice of positioning

**Overflow and drain technology**

**Standard pull-up knob**



Prime

**Prices (as of 07.05.26/excl. VAT)**

Model	Material	Basket	Article no.	Price CHF
Silver Star SIL 45IF/12	Stainless steel 18/10, Matt	3½" Tipo	10.104.256.00	896.- > Weblink
		3½" Space-saving	10.104.255.00	937.- > Weblink

**Product description**

**Delivery from 1.3.22 with edge width 12 mm**

With delivery from 1.3.2022, this model has an edge width of 12mm. Please note the changed cut-out dimensions.

**1 Product design, 2 mounting types**

The special advantage of IF models: Both flush and flat installation is possible.

**Flush-mounted installation: Recommendation for the choice of worktop:**

We recommend installation in worktops made of granite, artificial stone (e.g. Corian or Varicor) or solid wood. We do not recommend installation in synthetic resin worktops.

**Accessory**

**Optional accessories**



> Weblink  
40.000.914.00 / CHF  
106.-  
Colander, perforated



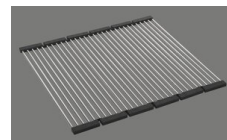
> Weblink  
40.001.290.00 / CHF  
106.-  
Colander, unperforated



> Weblink  
40.000.915.00 / CHF  
151.-  
Chopping board, made of glass, white



> Weblink  
40.001.147.00 / CHF  
151.-  
Chopping board, made of wood



> Weblink  
40.001.138.00 / CHF  
125.-  
Inox Pad

**Compatible Articles**



> Weblink  
40.001.314.00 / CHF  
155.-  
Dispenser Nano

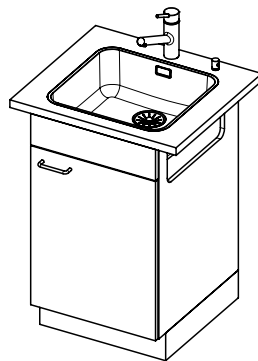
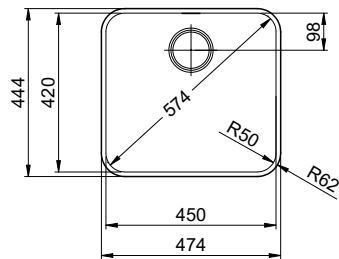


> Weblink  
40.001.023.00 / CHF  
347.-  
Müllex Boxx 40-R

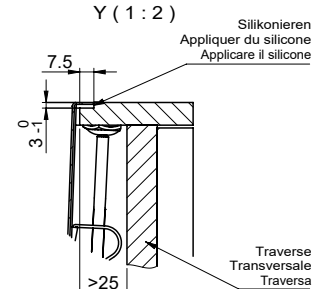
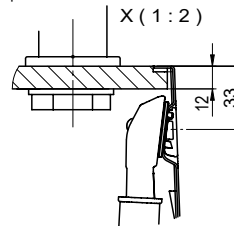
**Silver Star SIL 45IF/12** > [Web link](#)

**Spares**

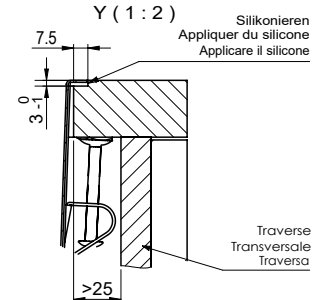
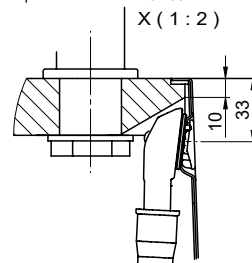
You can find the compatible range of spares here > [Weblink](#)



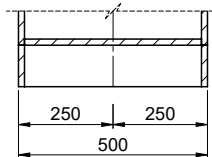
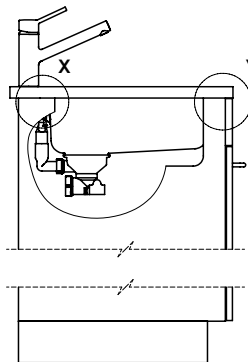
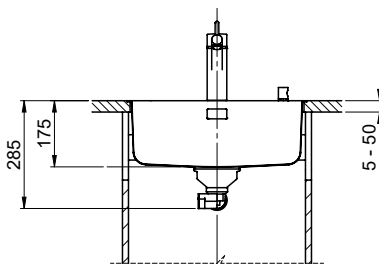
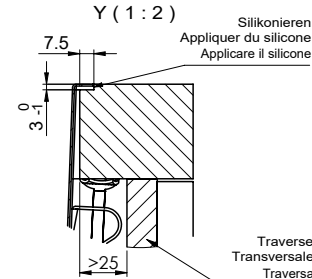
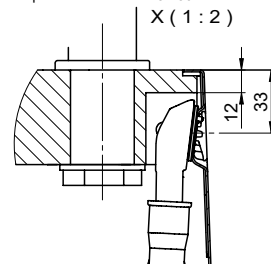
Für 12mm Arbeitsplatte.  
 Pour plan de travail de 12mm.  
 Per piano di lavoro da 12mm.



Für 13 - 30mm Arbeitsplatte.  
 Pour plan de travail de 13 - 30mm.  
 Per piano di lavoro da 13 - 30mm.



Für 13 - 50mm Arbeitsplatte.  
 Pour plan de travail de 13 - 50mm.  
 Per piano di lavoro da 13 - 50mm.



Bei der Planung die Traverse im Möbel beachten!

Faites attention à la barre transversale dans les meubles lors de la planification!

Presta attenzione alla traversa nei mobili durante la pianificazione!

Vom flächenbündigen Einbau in beschichteten Spanplatten raten wir ab.

Nous vous déconseillons le montage à fleur sur des panneaux de particules enduits.

Sconsigliamo il montaggio a filo top in pannelli di truciolato laminato.



Bohrung für Zug- und Druckknöpfe ø14

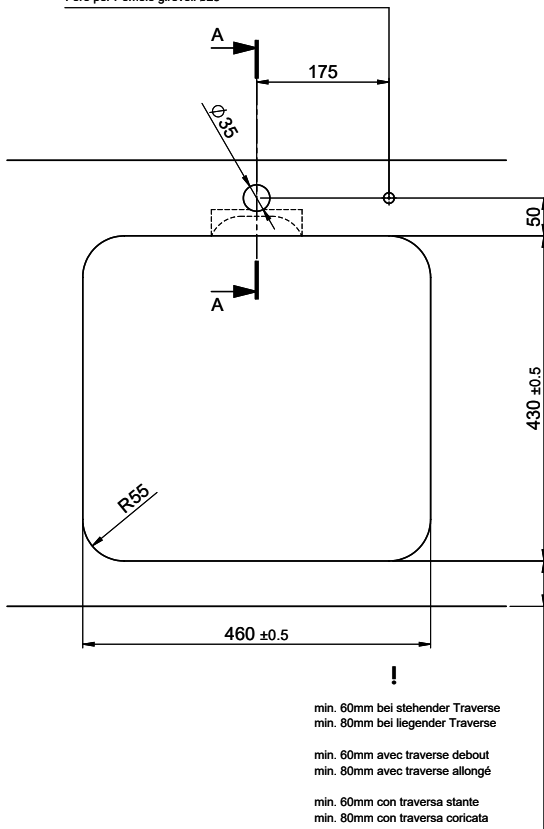
Bohrung für Drehknopf ø25

Trou pour boutons et Pousoirs de commande ø14

Trou pour bouton rotatif ø25

Foro per Pomelli tiranti e Pomelli pulsanti ø14

Foro per Pomolo girevoli ø25

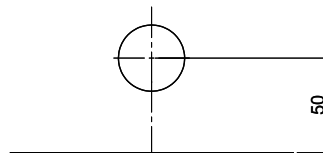


!  
 min. 60mm bei stehender Traverse  
 min. 80mm bei liegender Traverse

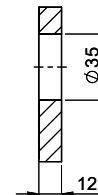
min. 60mm avec traverse debout  
 min. 80mm avec traverse allongé

min. 60mm con traversa stante  
 min. 80mm con traversa coricata

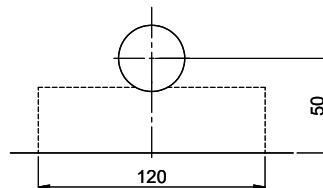
Für 12mm Arbeitsplatte.  
 Pour plan de travail de 12 mm.  
 Per piano di lavoro da 12 mm.



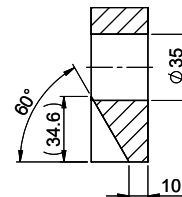
A-A (1 : 2)



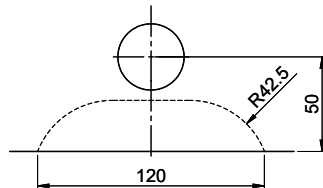
Für 13 - 30mm Arbeitsplatte.  
 Pour plan de travail de 13 - 30mm.  
 Per piano di lavoro da 13 - 30mm.



A-A (1 : 2)



Für 13 - 50mm Arbeitsplatte.  
 Pour plan de travail de 13 - 50mm.  
 Per piano di lavoro da 13 - 50mm.



A-A (1 : 2)

