

Silver Star SIL 50

[> Web link](#)



Fitting style
Topmount sinks

Model
SIL 50

Material
Stainless steel 18/10

Article no.
10.103.956.00

Cabinet size
55 cm

Basket
3½" Space-saving

Surface
Matt

Price CHF
812.- excl. VAT

Dimensions
500x350x165mm

Corner radius
50 mm

Overflow and drain technology



Sieve - type S



Concealed overflow

Basket pre-assembly
Assembly of the valve at the factory

Dispenser - mounting option
Free choice of positioning

Overflow and drain technology
Standard pull-up knob



Prime

Prices (as of 05.05.26/excl. VAT)

Model	Material	Basket	Article no.	Price CHF	
Silver Star SIL 50	Stainless steel 18/10, Matt	3½" Tipo	10.103.957.00	771.-	> Weblink
	Stainless steel 18/10, Polished	3½" Tipo	10.103.954.00	771.-	> Weblink
	Stainless steel 18/10, Matt	3½" Space-saving	10.103.956.00	812.-	> Weblink
	Stainless steel 18/10, Polished	3½" Space-saving	10.103.953.00	812.-	> Weblink

Accessory

Optional accessories



[> Weblink](#)
40.000.916.00 / CHF 106.-
Colander, perforated

Compatible Articles



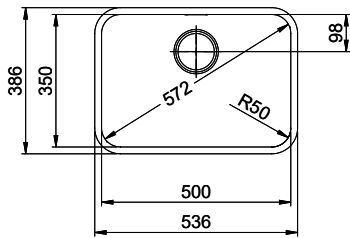
[> Weblink](#)
40.001.006.00 / CHF 22.-
Pull-up knob Prime, complete, plastic, ABS plastic, chrome-plated



[> Weblink](#)
40.001.024.00 / CHF 427.-
Müllex Boxx 55/60-R Bio

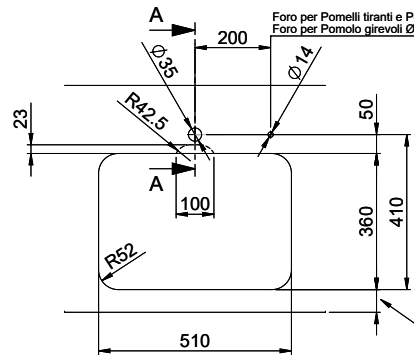
Spares

You can find the compatible range of spares here [> Weblink](#)

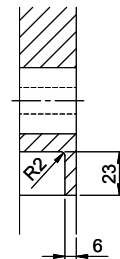


Bohrung für Zug- und Druckknöpfe Ø14
 Bohrung für Drehknopf Ø25
 Trou pour boutons et Poussoirs de commande Ø14
 Trou pour bouton rotatif Ø25

Foro per Pomelli tiranti e Pomelli pulsanti Ø14
 Foro per Pomolo girevoli Ø25

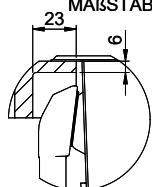


A-A
 MAßSTAB 1 : 2

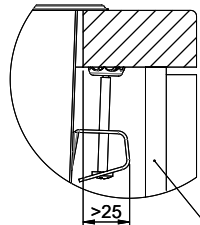


60mm bei stehender Traverse
 80mm bei liegender Traverse
 60mm avec traverse allongé
 80mm avec traverse debout
 60mm con traversa coricata
 80mm con traversa stante

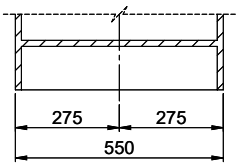
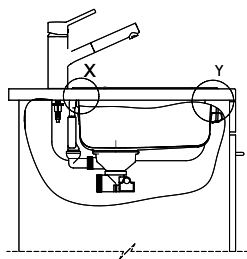
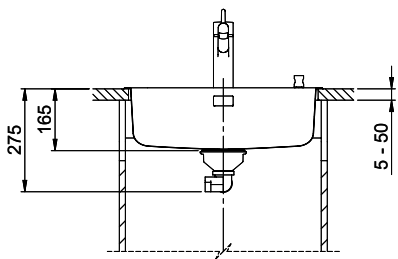
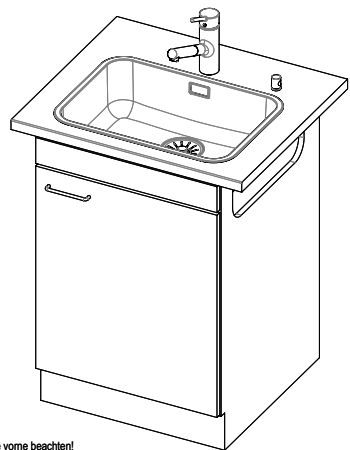
DETAIL X
 MAßSTAB 1 : 2



DETAIL Y
 MAßSTAB 1 : 2



Achtung: Traverse vorne beachten!
 Attention: respecter la traverse avant!
 Attenzione: rispettare la traversa avanti!



Für diese Dokumente und den darin dargestellten Gegenstand behalten wir uns alle Rechte vor. Verantwortliche Behörde ist die Gewerbe-Verwaltung des Kantons Schwyz. Copyright © 2020 Suter Inox AG. Alle Rechte vorbehalten.