

**Vantis V 34IF**

[> Web link](#)



**Fitting style**  
Flushmount sinks / Flat-mount inset

**Model**  
V 34IF

**Material**  
Stainless steel 18/10

**Article no.**  
10.105.270.00

**Cabinet size**  
40 cm

**Basket**  
3½" eFlow Desino

**Surface**  
Matt

**VRG**  
0.19

**Price CHF**  
1'307.- excl. VAT

**Dimensions**  
340x420x175mm

**Corner radius**  
35 mm

**Overflow and drain technology**



Desino: Concealed drain with basket underneath - type M



Concealed overflow eFlow

**Basket pre-assembly**  
Basket pre-assembly ex works

**Dispenser - mounting option**  
Free choice of positioning

**Overflow and drain technology**  
Standard pull-up knob

**Prices (as of 22.06.26/excl. VAT)**

Model	Material	Basket	Article no.	Price CHF	
Vantis V 34IF/12	Stainless steel 18/10 Stainless steel 18/10, Matt	3½" Tipo Desino	10.105.737.00	982.-	> Weblink
		3½" Space-saving Desino	10.105.272.00	982.-	> Weblink
		3½" TouchFlow Desino	10.105.271.00	1'192.-	> Weblink
		3½" eFlow Desino	10.105.270.00	1'307.-	> Weblink

**Product description**

**1 Product Model, 2 Installation Types**

The special advantage of IF models: Installation as flush with the adjacent areas as well as laid flat on top is possible.

**Flush-mounted installation: Recommendation for the choice of worktop:**

We recommend installation in worktops made of ceramic, granite, artificial stone (e.g. Corian or Varicor) or solid wood. We do not recommend installation in coated chipboard.

**Cleaning**

The Desino Drain Sieve is dishwasher-safe and can be cleaned completely or separately up to a maximum temperature of 65°C.

**Accessory**

Optional accessories



> Weblink  
40.000.914.00 / CHF 106.-  
Colander, perforated



> Weblink  
40.001.290.00 / CHF 106.-  
Colander, unperforated



> Weblink  
40.000.915.00 / CHF 151.-  
Chopping board, made of glass, white



> Weblink  
40.001.147.00 / CHF 151.-  
Chopping board, made of wood



> Weblink  
40.001.138.00 / CHF 125.-  
Inox Pad



> Weblink  
40.002.008.00 / CHF 51.-  
Maro dish drainer mat, Dark Grey

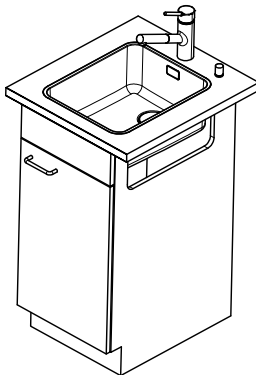
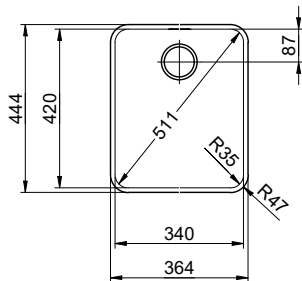
**Vantis V 34IF** > [Web link](#)

**Spares**

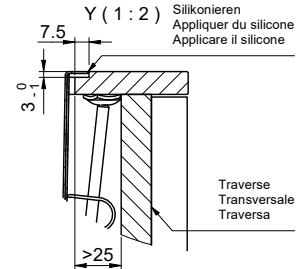
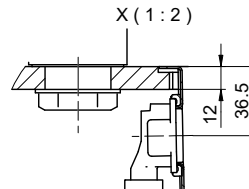
You can find the compatible range of spares here > [Weblink](#)

# Vantis V 341F/12 Desino

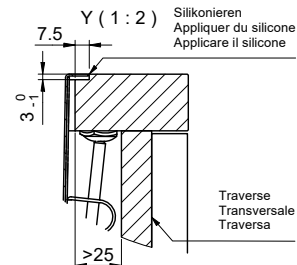
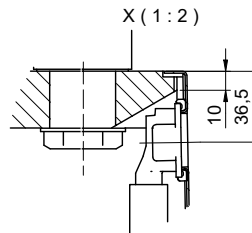
Randbreite 12mm  
 Bord de 12mm de largeur  
 Larghezza bordo 12mm



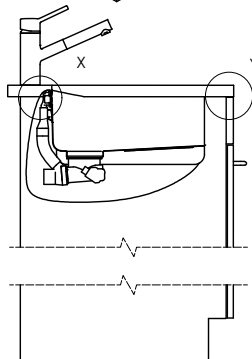
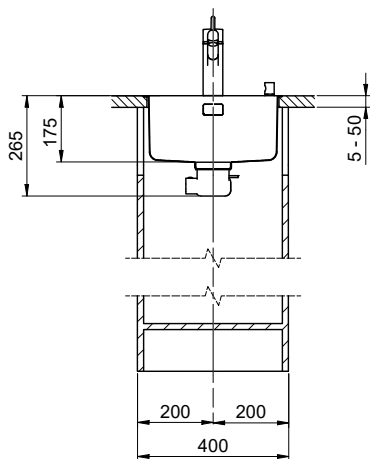
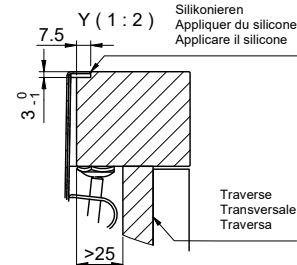
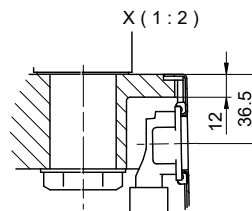
Für 12mm Arbeitsplatte.  
 Pour plan de travail de 12mm.  
 Per piano di lavoro da 12mm.



Für 13 - 30mm Arbeitsplatte.  
 Pour plan de travail de 13 - 30mm.  
 Per piano di lavoro da 13 - 30mm.



Für 13 - 50mm Arbeitsplatte.  
 Pour plan de travail de 13 - 50mm.  
 Per piano di lavoro da 13 - 50mm.



Bei der Planung die Traverse im Möbel beachten!

Faites attention à la barre transversale dans les meubles lors de la planification!

Presta attenzione alla traversa nei mobili durante la pianificazione!

Vom flächenbündigen Einbau in beschichtete Spanplatten raten wir ab.

Nous vous déconseillons le montage à fleur sur des panneaux de particules enduits.

Sconsigliamo il montaggio a filo top in pannelli di truciolato laminato.

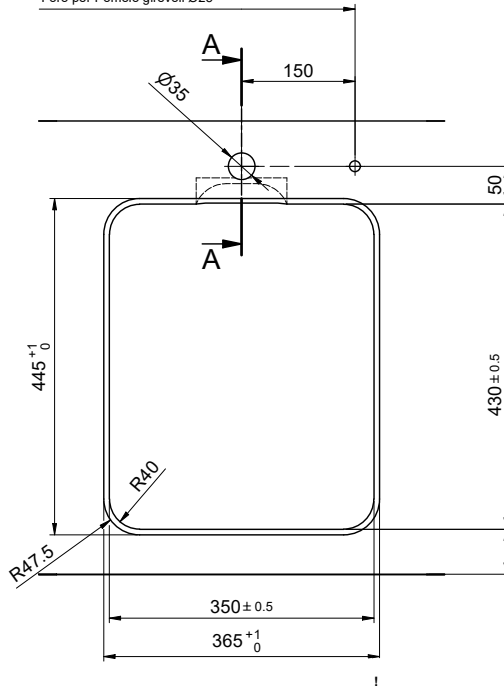
# Vantis V 341F/12 Desino

**Ausschnitt für flächenbündigen Einbau - Randbreite 12mm:**  
**Mesure de coupure pour montage à fleur - Bord de 12mm de largeur:**  
**Intaglio per montaggio a filo top - Larghezza bordo 12mm:**

Bohrung für Zug- und Druckknöpfe Ø14  
 Bohrung für Drehknopf Ø25

Trou pour boutons et Poussoirs de commande Ø14  
 Trou pour bouton rotatif Ø25

Foro per Pomelli tiranti e Pomelli pulsanti Ø14  
 Foro per Pomolo girevoli Ø25

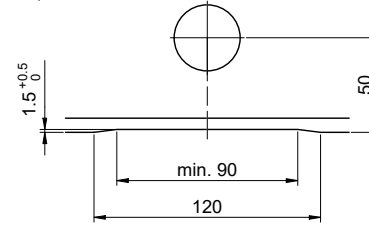


min. 60mm bei stehender Traverse.  
 min. 80mm bei liegender Traverse.

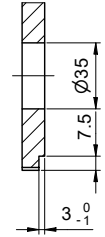
min. 60mm avec traverse debout.  
 min. 80mm avec traverse allongé.

min. 60mm con traversa stante.  
 min. 80mm con traversa coricata.

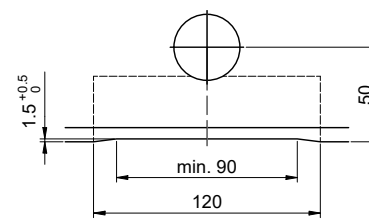
Für 12mm Arbeitsplatte.  
 Pour plan de travail de 12mm.  
 Per piano di lavoro da 12mm.



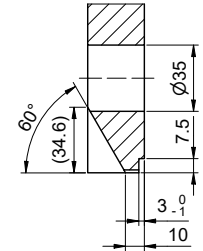
A-A (1 : 2)



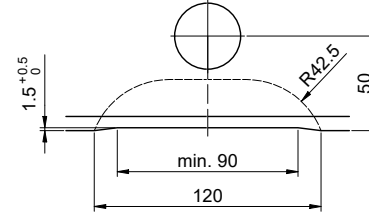
Für 13 - 30mm Arbeitsplatte.  
 Pour plan de travail de 13 - 30mm.  
 Per piano di lavoro da 13 - 30mm.



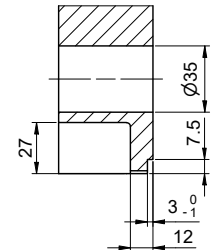
A-A (1 : 2)



Für 13 - 50mm Arbeitsplatte.  
 Pour plan de travail de 13 - 50mm.  
 Per piano di lavoro da 13 - 50mm.



A-A (1 : 2)



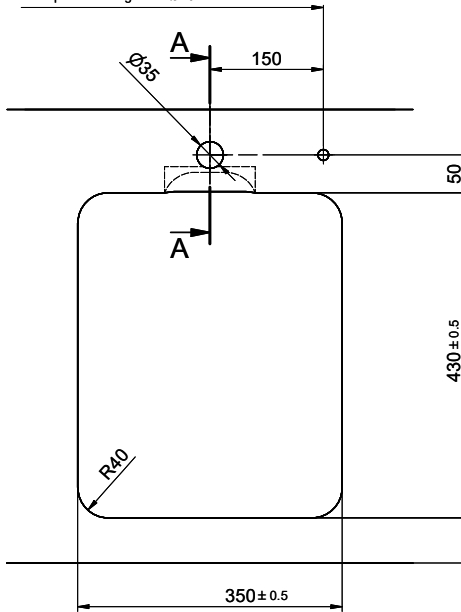
# Vantis V 341F/12 Desino

**Ausschnitt für aufliegenden Einbau - Randbreite 12mm:**  
**Mesure de coupure pour montage en appui - Bord de 12mm de largeur:**  
**Intaglio per montaggio soprapiano - Larghezza bordo 12mm:**

Bohrung für Zug- und Druckknöpfe Ø14  
 Bohrung für Drehknopf Ø25

Trou pour boutons et Pousoirs de commande Ø14  
 Trou pour bouton rotatif Ø25

Foro per Pomelli tiranti e Pomelli pulsanti Ø14  
 Foro per Pomolo girevoli Ø25

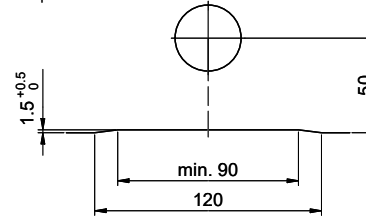


I  
 min. 60mm bei stehender Traverse.  
 min. 80mm bei liegender Traverse.

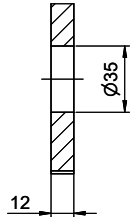
min. 60mm avec traverse debout.  
 min. 80mm avec traverse allongé.

min. 60mm con traversa stante.  
 min. 80mm con traversa coricata.

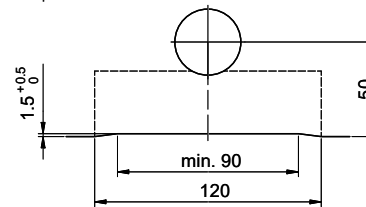
Für 12mm Arbeitsplatte.  
 Pour plan de travail de 12mm.  
 Per piano di lavoro da 12mm.



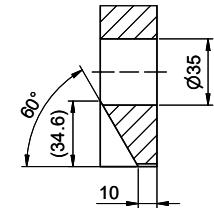
A-A (1 : 2)



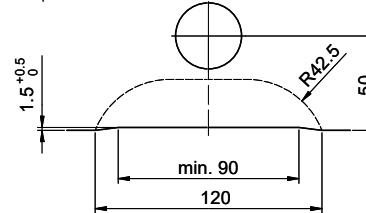
Für 13 - 30mm Arbeitsplatte.  
 Pour plan de travail de 13 - 30mm.  
 Per piano di lavoro da 13 - 30mm.



A-A (1 : 2)



Für 13 - 50mm Arbeitsplatte.  
 Pour plan de travail de 13 - 50mm.  
 Per piano di lavoro da 13 - 50mm.



A-A (1 : 2)

