

**Vantis V 55IF/12**

[> Web link](#)



**Fitting style**  
Flushmount sinks / Flat-mount inset

**Model**  
V 55IF/12

**Material**  
Stainless steel 18/10

**Article no.**  
10.104.249.00

**Cabinet size**  
60 cm

**Basket**  
3½" Space-saving

**Surface**  
Matt

**Price CHF**  
1'178.- excl. VAT

**Dimensions**  
550x420x175mm

**Corner radius**  
35 mm

**Overflow and drain technology**



Sieve - type S



Swivelling overflow cap

**Basket pre-assembly**  
Assembly of the valve at the factory

**Dispenser - mounting option**  
Free choice of positioning

**Overflow and drain technology**  
**Standard pull-up knob**



Prime

**Prices (as of 06.05.26/excl. VAT)**

| Model            | Material                    | Basket           | Article no.   | Price CHF         |
|------------------|-----------------------------|------------------|---------------|-------------------|
| Vantis V 55IF/12 | Stainless steel 18/10, Matt | 3½" Tipo         | 10.104.250.00 | 1'129.- > Weblink |
|                  |                             | 3½" Space-saving | 10.104.249.00 | 1'178.- > Weblink |
|                  |                             | 3½" TouchFlow    | 10.104.248.00 | 1'376.- > Weblink |

**Product description**

**1 Product Model, 2 Installation Types**

The special advantage of IF models: Installation as flush with the adjacent areas as well as laid flat on top is possible.

**Flush-mounted installation: Recommendation for the choice of worktop:**

We recommend installation in worktops made of ceramic, granite, artificial stone (e.g. Corian or Varicor) or solid wood. We do not recommend installation in coated chipboard.

**Accessory**

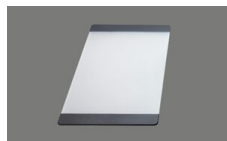
**Optional accessories**



> Weblink  
40.000.914.00 / CHF 106.-  
Colander, perforated



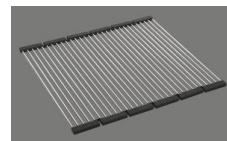
> Weblink  
40.001.290.00 / CHF 106.-  
Colander, unperforated



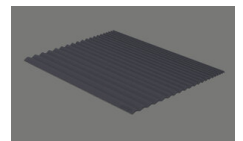
> Weblink  
40.000.915.00 / CHF 151.-  
Chopping board, made of glass, white



> Weblink  
40.001.147.00 / CHF 151.-  
Chopping board, made of wood



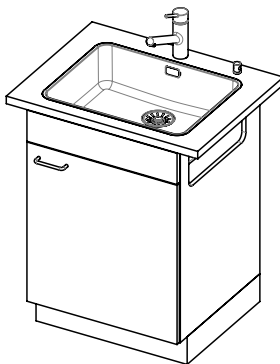
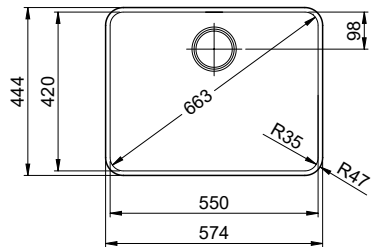
> Weblink  
40.001.138.00 / CHF 125.-  
Inox Pad



> Weblink  
40.002.008.00 / CHF 51.-  
Maro dish drainer mat, Dark Grey

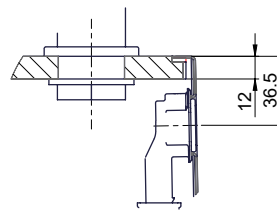
**Spares**

You can find the compatible range of spares here > [Weblink](#)

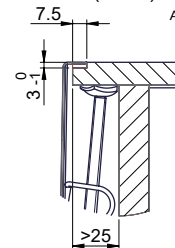


Für 12mm Arbeitsplatte.  
 Pour plan de travail de 12mm.  
 Per piano di lavoro da 12mm.

X (1 : 2)



Y (1 : 2)

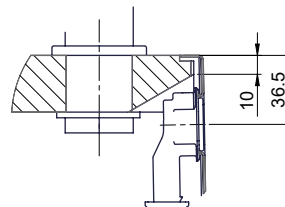


Silikonieren  
 Appliquer du silicone  
 Applicare il silicone

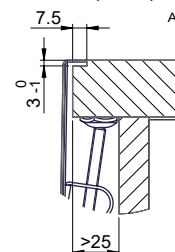
Traverse  
 Transversale  
 Traversa

Für 13 - 30mm Arbeitsplatte.  
 Pour plan de travail de 13 - 30mm.  
 Per piano di lavoro da 13 - 30mm.

X (1 : 2)



Y (1 : 2)

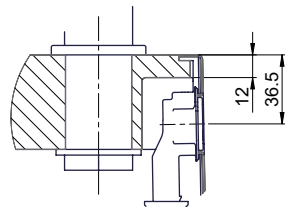


Silikonieren  
 Appliquer du silicone  
 Applicare il silicone

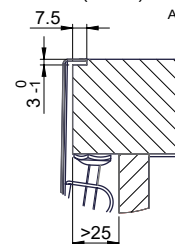
Traverse  
 Transversale  
 Traversa

Für 13 - 50mm Arbeitsplatte.  
 Pour plan de travail de 13 - 50mm.  
 Per piano di lavoro da 13 - 50mm.

X (1 : 2)

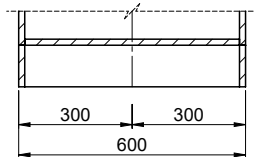
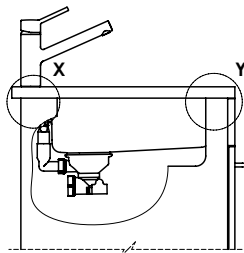
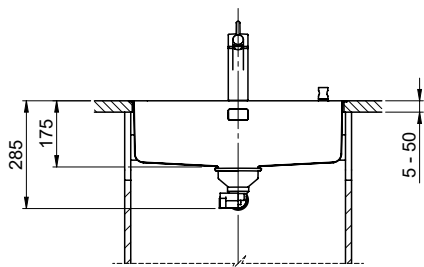


Y (1 : 2)



Silikonieren  
 Appliquer du silicone  
 Applicare il silicone

Traverse  
 Transversale  
 Traversa



Bei der Planung die Traverse im Möbel beachten!

Faites attention à la barre transversale dans les meubles lors de la planification!

Presta attenzione alla traversa nei mobili durante la pianificazione!

Vom flächenbündigen Einbau in beschichteten Spanplatten raten wir ab.

Nous vous déconseillons le montage à fleur sur des panneaux de particules enduits.

Sconsigliamo il montaggio a filo top in pannelli di truciolato laminato.

Bohrung für Zug- und Druckknöpfe ø14

Bohrung für Drehknopf ø25

Trou pour boutons et Poissoirs de commande ø14

Trou pour bouton rotatif ø25

Foro per Pomelli tiranti e Pomelli pulsanti ø14

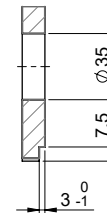
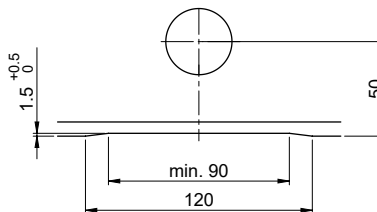
Foro per Pomolo girevoli ø25

Für 12mm Arbeitsplatte.

Pour plan de travail de 12 mm.

Per piano di lavoro da 12 mm.

A-A (1 : 2)

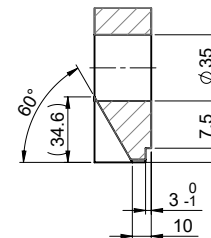
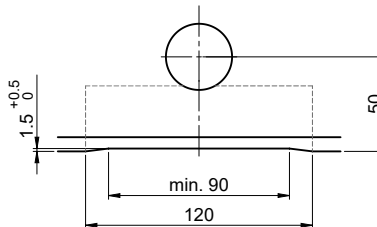


Für 13 - 30mm Arbeitsplatte.

Pour plan de travail de 13 - 30mm.

Per piano di lavoro da 13 - 30mm.

A-A (1 : 2)

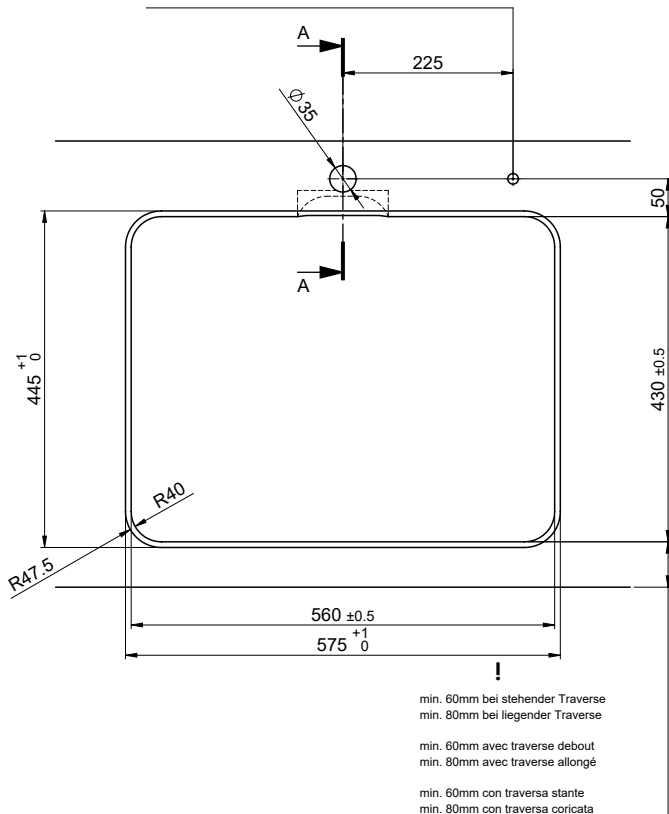
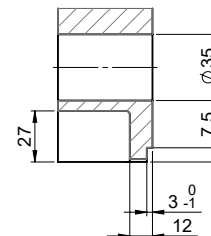
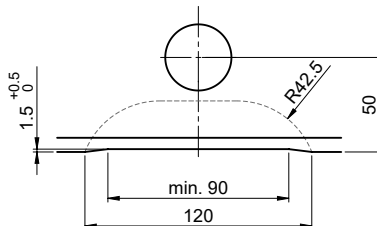


Für 13 - 50mm Arbeitsplatte.

Pour plan de travail de 13 - 50mm.

Per piano di lavoro da 13 - 50mm.

A-A (1 : 2)



min. 60mm bei stehender Traverse  
 min. 80mm bei liegender Traverse

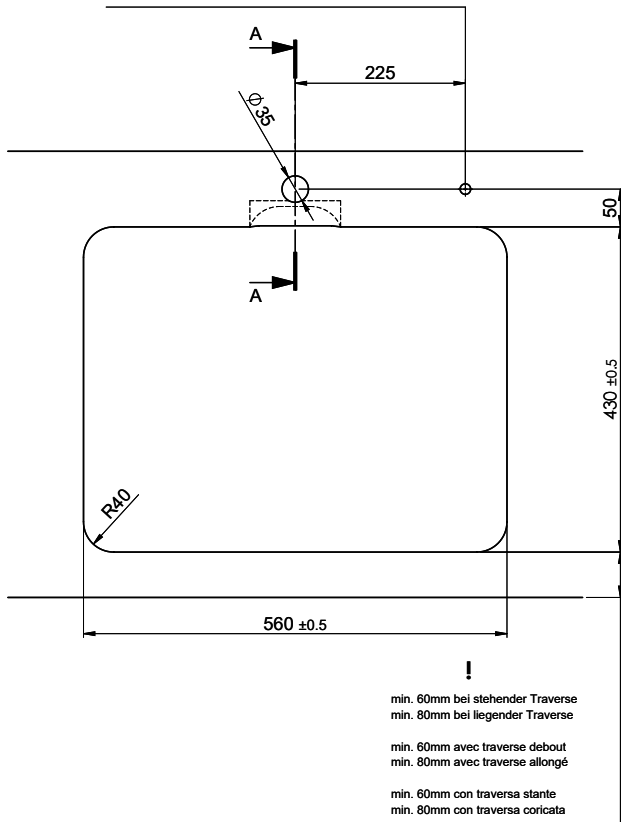
min. 60mm avec traverse debout  
 min. 80mm avec traverse allongé

min. 60mm con traversa stante  
 min. 80mm con traversa coricata

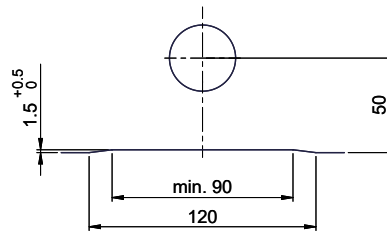
Bohrung für Zug- und Druckknöpfe ø14  
 Bohrung für Drehknopf ø25

Trou pour boutons et Pousoirs de commande ø14  
 Trou pour bouton rotatif ø25

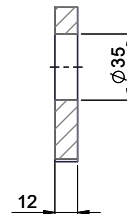
Foro per Pomelli tiranti e Pomelli pulsanti ø14  
 Foro per Pomolo girevoli ø25



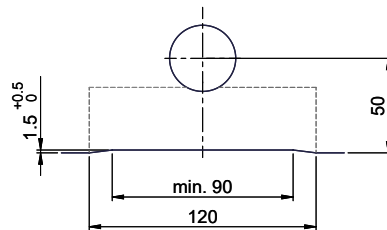
Für 12mm Arbeitsplatte.  
 Pour plan de travail de 12 mm.  
 Per piano di lavoro da 12 mm.



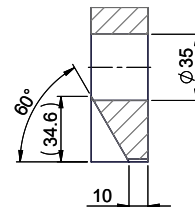
A-A (1 : 2)



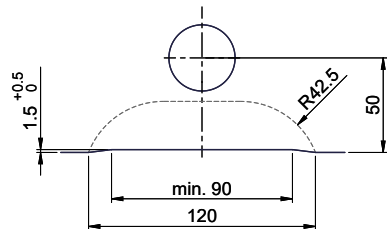
Für 13 - 30mm Arbeitsplatte.  
 Pour plan de travail de 13 - 30mm.  
 Per piano di lavoro da 13 - 30mm.



A-A (1 : 2)



Für 13 - 50mm Arbeitsplatte.  
 Pour plan de travail de 13 - 50mm.  
 Per piano di lavoro da 13 - 50mm.



A-A (1 : 2)

