

Vantis V 55IF/12

[> Web link](#)



**Fitting style**  
Flushmount sinks

**Model**  
V 55IF/12

**Material**  
Stainless steel 18/10

**Article no.**  
10.105.757.00

**Cabinet size**  
60 cm

**Basket**  
3½" Tipo Desino

**Surface**  
Matt

**Price CHF**  
1'318.- excl. VAT

**Dimensions**  
550x420x175mm

**Corner radius**  
35 mm

**Overflow and drain technology**



Tipo Desino:  
Concealed drain with  
basket underneath -  
type M



Swivelling overflow  
cap

**Basket pre-assembly**

Basket pre-assembly ex works

**Dispenser - mounting option**

Free choice of positioning

**Overflow and drain technology**

**Prices (as of 14.05.26/excl. VAT)**

Model	Material	Basket	Article no.	Price CHF
Vantis V 55IF/12	Stainless steel 18/10, Matt	3½" Tipo Desino	10.105.757.00	1'318.- > Weblink
		3½" Space-saving Desino	10.105.215.00	1'318.- > Weblink
		3½" TouchFlow Desino	10.105.214.00	1'528.- > Weblink
		3½" eFlow Desino	10.105.281.00	1'643.- > Weblink

**Product description**

**1 Product Model, 2 Installation Types**

The special advantage of IF models: Installation as flush with the adjacent areas as well as laid flat on top is possible.

**Flush-mounted installation: Recommendation for the choice of worktop:**

We recommend installation in worktops made of ceramic, granite, artificial stone (e.g. Corian or Varicor) or solid wood. We do not recommend installation in coated chipboard.

**Cleaning**

The Desino Drain Sieve is dishwasher-safe and can be cleaned completely or separately up to a maximum temperature of 65°C.

**Accessory**

Optional accessories



> Weblink  
40.000.914.00 / CHF  
106.-  
Colander, perforated



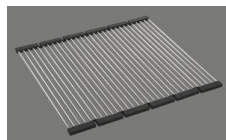
> Weblink  
40.001.290.00 / CHF  
106.-  
Colander, unperforated



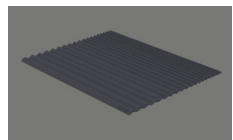
> Weblink  
40.000.915.00 / CHF  
151.-  
Chopping board, made of  
glass, white



> Weblink  
40.001.147.00 / CHF  
151.-  
Chopping board, made of  
wood



> Weblink  
40.001.138.00 / CHF  
125.-  
Inox Pad



> Weblink  
40.002.008.00 / CHF 51.-  
Maro dish drainer mat,  
Dark Grey

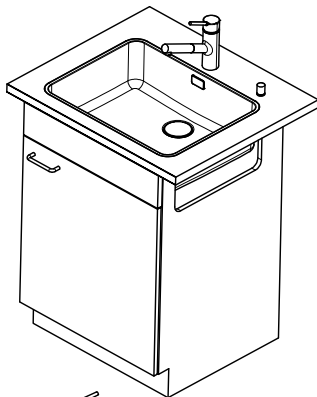
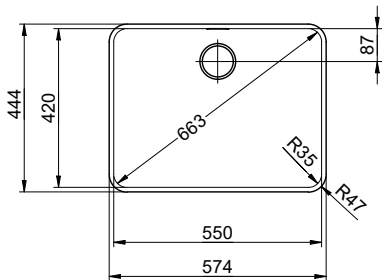
**Vantis V 55IF/12** > [Web link](#)

**Spares**

You can find the compatible range of spares here > [Weblink](#)

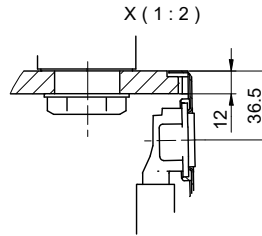
# Vantis V 551F/12 Desino

**Randbreite 12mm**  
**Bord de 12mm de largeur**  
**Larghezza bordo 12mm**

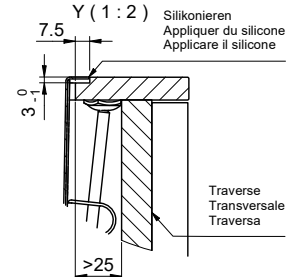


Für 12mm Arbeitsplatte.  
 Pour plan de travail de 12mm.  
 Per piano di lavoro da 12mm.

X (1 : 2)

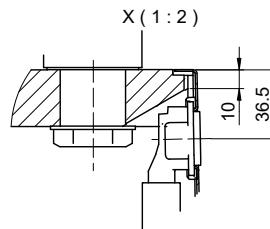


Y (1 : 2)

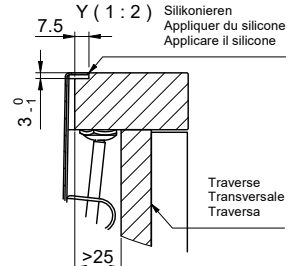


Für 13 - 30mm Arbeitsplatte.  
 Pour plan de travail de 13 - 30mm.  
 Per piano di lavoro da 13 - 30mm.

X (1 : 2)

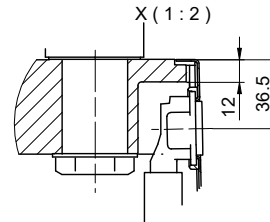


Y (1 : 2)

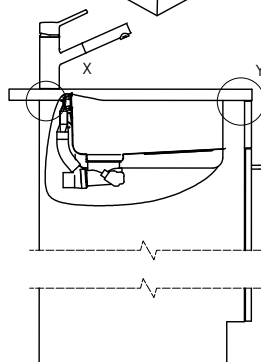
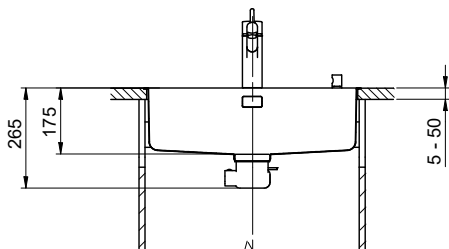
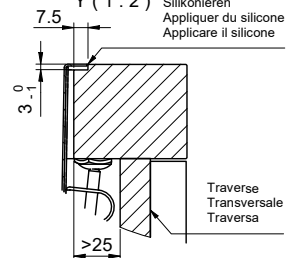


Für 30 - 50mm Arbeitsplatte.  
 Pour plan de travail de 30 - 50mm.  
 Per piano di lavoro da 30 - 50mm.

X (1 : 2)



Y (1 : 2)



Bei der Planung die Traverse im Möbel beachten!

Faites attention à la barre transversale dans les meubles lors de la planification!

Presta attenzione alla traversa nei mobili durante la pianificazione!

Vom flächenbündigen Einbau in beschichtete Spanplatten raten wir ab.

Nous vous déconseillons le montage à fleur sur des panneaux de particules enduits.

Consigliamo il montaggio a filo top in pannelli di truciolato laminato.

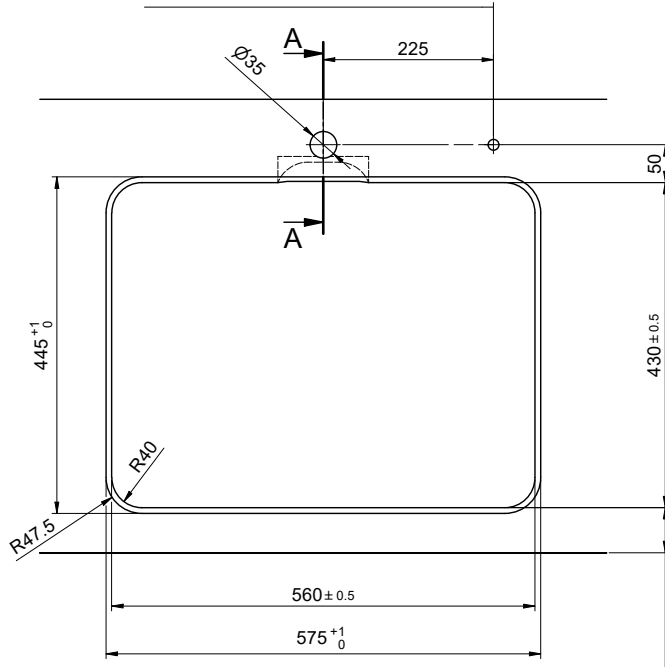
# Vantis V 551F/12 Desino

Ausschnitt für flächenbündigen Einbau - Randbreite 12mm:  
 Mesure de coupe pour montage à fleur - Bord de 12mm de largeur:  
 Intaglio per montaggio a filo top - Larghezza bordo 12mm:

Bohrung für Zug- und Druckknöpfe Ø14  
 Bohrung für Drehknopf Ø25

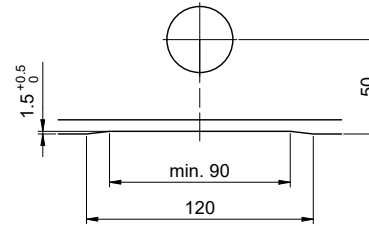
Trou pour boutons et Poussoirs de commande Ø14  
 Trou pour bouton rotatif Ø25

Foro per Pomelli tiranti e Pomelli pulsanti Ø14  
 Foro per Pomolo girevoli Ø25

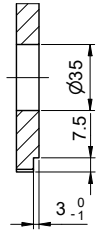


!  
 min. 60mm bei stehender Traverse.  
 min. 80mm bei liegender Traverse.  
 min. 60mm avec traverse debout.  
 min. 80mm avec traverse allongé.  
 min. 60mm con traversa stante.  
 min. 80mm con traversa coricata.

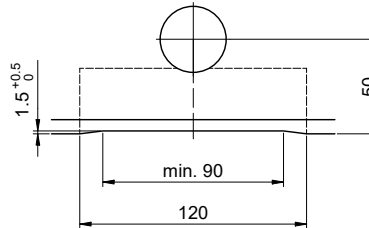
Für 12mm Arbeitsplatte.  
 Pour plan de travail de 12mm.  
 Per piano di lavoro da 12mm.



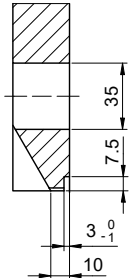
A-A (1 : 2)



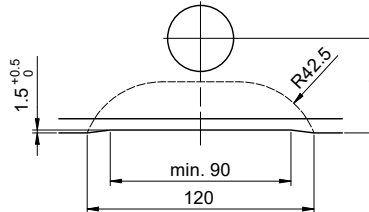
Für 13 - 30mm Arbeitsplatte.  
 Pour plan de travail de 13 - 30mm.  
 Per piano di lavoro da 13 - 30mm.



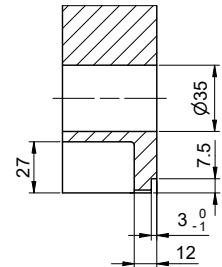
A-A (1 : 2)



Für 30 - 50mm Arbeitsplatte.  
 Pour plan de travail de 30 - 50mm.  
 Per piano di lavoro da 30 - 50mm.



A-A (1 : 2)



# Vantis V 551F/12 Desino

**Ausschnitt für aufliegenden Einbau - Randbreite 12mm:**  
**Mesure de coupe pour montage en appui - Bord de 12mm de largeur:**  
**Intaglio per montaggio soprapiano - Larghezza bordo 12mm:**

Bohrung für Zug- und Druckknöpfe Ø14  
 Bohrung für Drehknopf Ø25

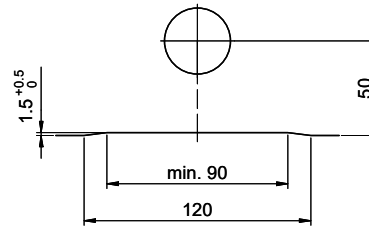
Trou pour boutons et Poussoirs de commande Ø14  
 Trou pour bouton rotatif Ø25

Foro per Pomelli tiranti e Pomelli pulsanti Ø14  
 Foro per Pomolo girevoli Ø25

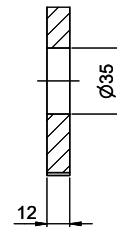


I  
 min. 60mm bei stehender Traverse.  
 min. 80mm bei liegender Traverse.  
 min. 60mm avec traverse debout.  
 min. 80mm avec traverse allongé.  
 min. 60mm con traversa stante.  
 min. 80mm con traversa coricata.

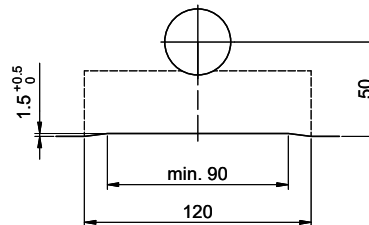
Für 12mm Arbeitsplatte.  
 Pour plan de travail de 12mm.  
 Per piano di lavoro da 12mm.



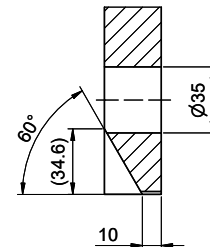
A-A (1 : 2)



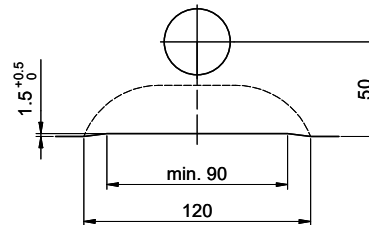
Für 13 - 30mm Arbeitsplatte.  
 Pour plan de travail de 13 - 30mm.  
 Per piano di lavoro da 13 - 30mm.



A-A (1 : 2)



Für 30 - 50mm Arbeitsplatte.  
 Pour plan de travail de 30 - 50mm.  
 Per piano di lavoro da 30 - 50mm.



A-A (1 : 2)

