

Vantis V 55U

[> Web link](#)



Fitting style
Undermount bowls

Model
V 55U

Material
Stainless steel 18/10

Article no.
10.103.903.00

Cabinet size
60 cm

Basket
3½" Tipo

Surface
Matt

Price CHF
1'026.- excl. VAT

Dimensions
550x420x175mm

Corner radius
35 mm

Overflow and drain technology



Sieve - type S



Swivelling overflow cap

Basket pre-assembly
Assembly of the valve at the factory

Dispenser - mounting option
Free choice of positioning

Overflow and drain technology
Standard pull-up knob

Prices (as of 06.05.26/excl. VAT)

Model	Material	Basket	Article no.	Price CHF
Vantis V 55U	Stainless steel 18/10, Matt	3½" Tipo	10.103.903.00	1'026.- > Weblink
		3½" Space-saving	10.103.902.00	1'075.- > Weblink
		3½" TouchFlow	10.103.901.00	1'273.- > Weblink

Accessory

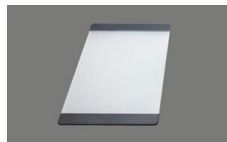
Optional accessories



> Weblink
40.000.914.00 / CHF 106.-
Colander, perforated



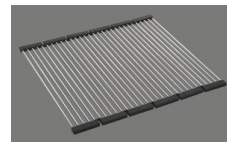
> Weblink
40.001.290.00 / CHF 106.-
Colander, unperforated



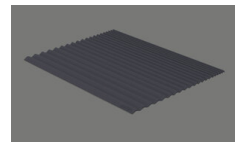
> Weblink
40.000.915.00 / CHF 151.-
Chopping board, made of glass, white



> Weblink
40.001.147.00 / CHF 151.-
Chopping board, made of wood



> Weblink
40.001.138.00 / CHF 125.-
Inox Pad



> Weblink
40.002.008.00 / CHF 51.-
Maro dish drainer mat, Dark Grey

Spares

You can find the compatible range of spares here [> Weblink](#)

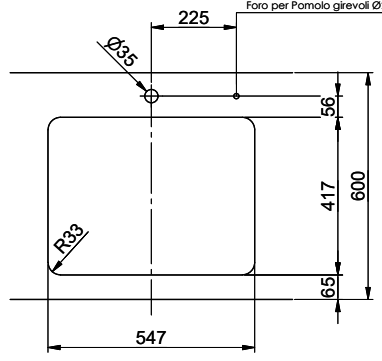
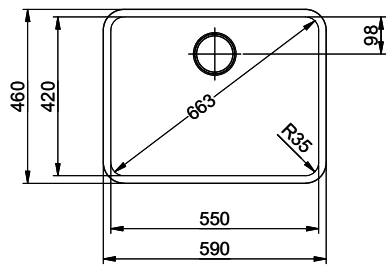
Vantis V 55U

Masse / Ausschnittkontur
 Dimensions / contour de découpe
 Dimensioni / contorno dell'apertura

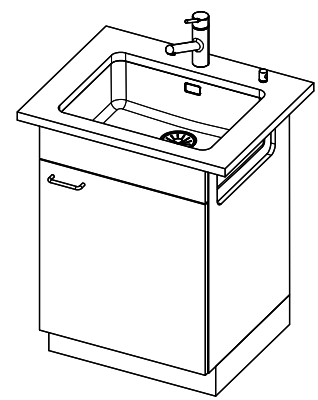
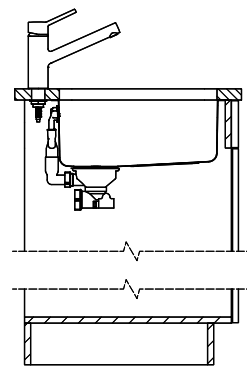
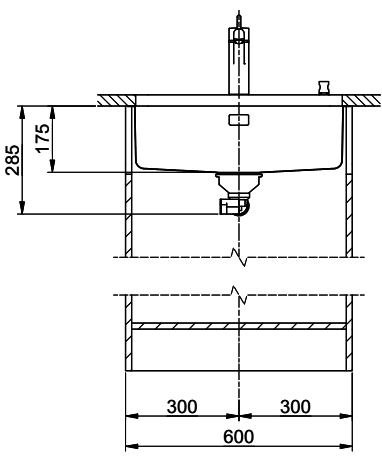


A
 B
 C
 D
 E
 F

Bohrung für Zug- und Druckknöpfe Ø14
 Bohrung für Drehknopf Ø25
 Trou pour boutons et Poussoirs de commande Ø14
 Trou pour bouton rotatif Ø25
 Foro per Pomelli tiranti e Pomelli pulsanti Ø14
 Foro per Pomolo girevoli Ø25



Es ist dieses Dokument und den darin angegebenen Informationen Inhaltlich mit einer alle Rechte vorbehalten. Verwendbar ist, Bestimmung an
 Dritte ohne Zustimmung der Suter, unter der Verantwortung der Zeichner. © Copyright 2020 Suter Inox AG, All rights reserved.



1 2 3 4 5 6 7 8