

## Vantis VG 45IF/12 Green

[> Web link](#)



**Fitting style**  
Flushmount sinks / Flat-mount inset

**Model**  
VG 45IF/12 Green

**Material**  
Stainless steel 18/10

**Article no.**  
10.105.778.00

**Cabinet size**  
50 cm

**Basket**  
3½" TouchFlow

**Surface**  
Matt

**VRG**  
0.19

**Price CHF**  
1'182.- excl. VAT

**Dimensions**  
450x420x160mm

**Corner radius**  
35 mm

### Overflow and drain technology



Sieve - type S



Swivelling TouchFlow overflow cap

**Basket pre-assembly**  
Assembly of the valve at the factory

**Dispenser - mounting option**  
Free choice of positioning

### Green Line



Green Line is an independent product version geared towards sustainability.

**Standard pull-up knob**

### Prices (as of 14.05.26/excl. VAT)

Model	Material	Basket	Article no.	Price CHF	
Vantis VG 45IF/12 Green	Stainless steel 18/10, Matt	3½" Tipo	10.105.780.00	935.-	<a href="#">&gt; Weblink</a>
		3½" TouchFlow	10.105.778.00	1'182.-	<a href="#">&gt; Weblink</a>
		3½" Space-saving	10.105.779.00	984.-	<a href="#">&gt; Weblink</a>

### Accessory

#### Optional accessories



[> Weblink](#)  
40.000.914.00 / CHF 106.-  
Colander, perforated



[> Weblink](#)  
40.001.290.00 / CHF 106.-  
Colander, unperforated



[> Weblink](#)  
40.000.915.00 / CHF 151.-  
Chopping board, made of glass, white



[> Weblink](#)  
40.001.147.00 / CHF 151.-  
Chopping board, made of wood



[> Weblink](#)  
40.001.138.00 / CHF 125.-  
Inox Pad

### Spares

You can find the compatible range of spares here [> Weblink](#)



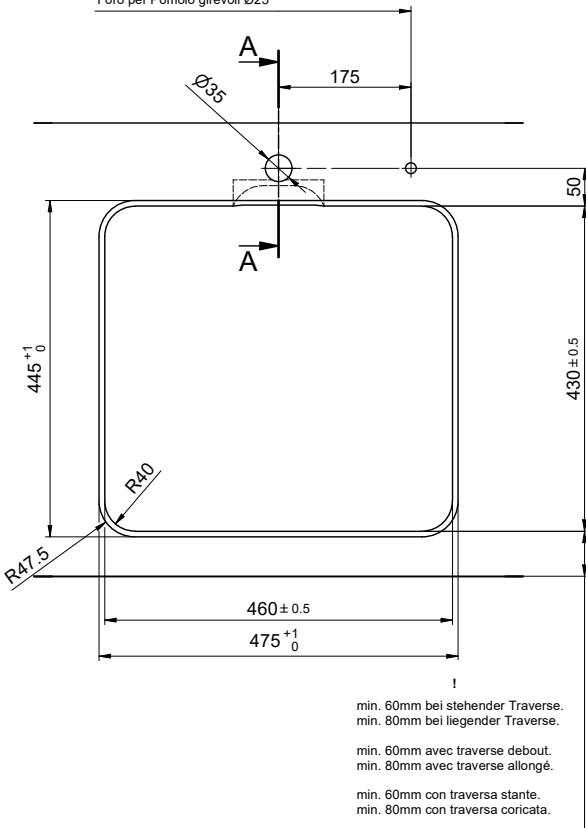
# Vantis VG 45IF/12 Green

**Ausschnitt für flächenbündigen Einbau - Randbreite 12mm:**  
**Mesure de coupure pour montage à fleur - Bord de 12mm de largeur:**  
**Intaglio per montaggio a filo top - Larghezza bordo 12mm:**

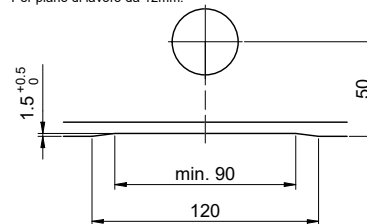
Bohrung für Zug- und Druckknöpfe Ø14  
 Bohrung für Drehknopf Ø25

Trou pour boutons et Poussoirs de commande Ø14  
 Trou pour bouton rotatif Ø25

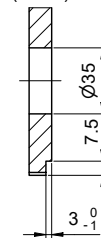
Foro per Pomelli tiranti e Pomelli pulsanti Ø14  
 Foro per Pomolo girevoli Ø25



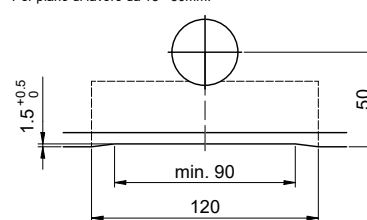
Für 12mm Arbeitsplatte.  
 Pour plan de travail de 12mm.  
 Per piano di lavoro da 12mm.



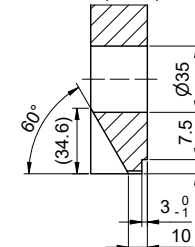
A-A (1 : 2)



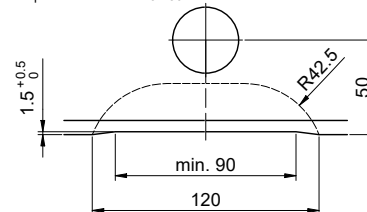
Für 13 - 30mm Arbeitsplatte.  
 Pour plan de travail de 13 - 30mm.  
 Per piano di lavoro da 13 - 30mm.



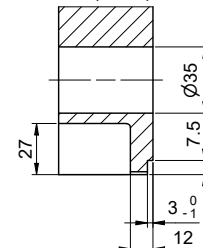
A-A (1 : 2)



Für 13 - 50mm Arbeitsplatte.  
 Pour plan de travail de 13 - 50mm.  
 Per piano di lavoro da 13 - 50mm.



A-A (1 : 2)



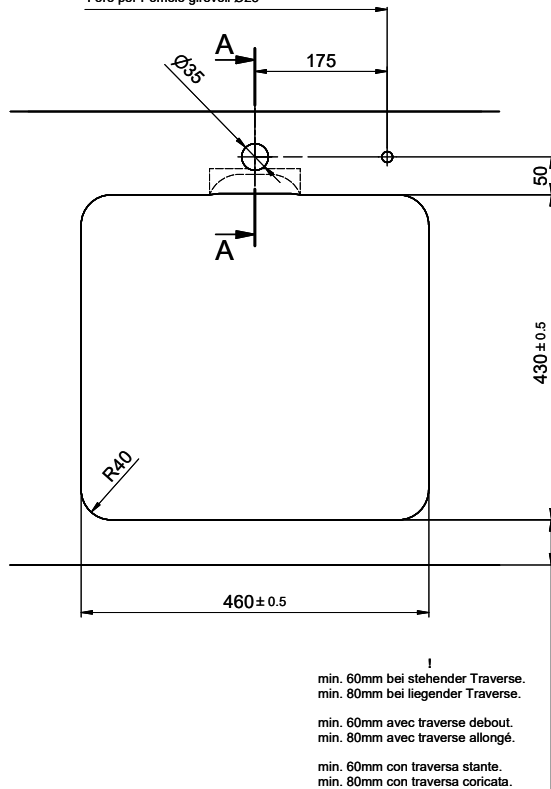
# Vantis VG 45IF/12 Green

**Ausschnitt für flach aufliegenden Einbau - Randbreite 12mm:**  
**Mesure de coupure pour montage en appui - Bord de 12mm de largeur:**  
**Intaglio per montaggio soprapiano - Larghezza bordo 12mm:**

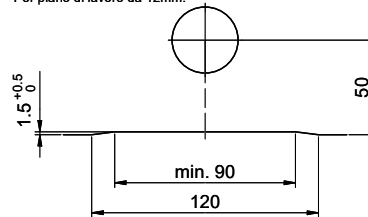
Bohrung für Zug- und Druckknöpfe Ø14  
 Bohrung für Drehknopf Ø25

Trou pour boutons et Pousoirs de commande Ø14  
 Trou pour bouton rotatif Ø25

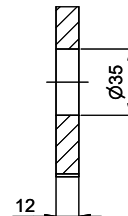
Foro per Pomelli tiranti e Pomelli pulsanti Ø14  
 Foro per Pomolo girevoli Ø25



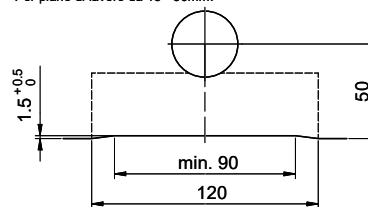
Für 12mm Arbeitsplatte.  
 Pour plan de travail de 12mm.  
 Per piano di lavoro da 12mm.



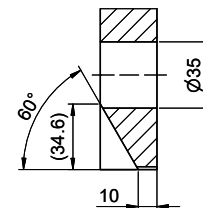
A-A (1 : 2)



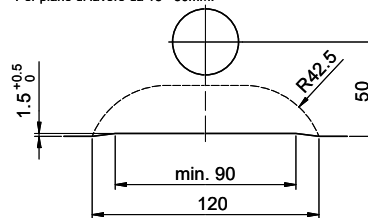
Für 13 - 30mm Arbeitsplatte.  
 Pour plan de travail de 13 - 30mm.  
 Per piano di lavoro da 13 - 30mm.



A-A (1 : 2)



Für 13 - 50mm Arbeitsplatte.  
 Pour plan de travail de 13 - 50mm.  
 Per piano di lavoro da 13 - 50mm.



A-A (1 : 2)

