

Vantis VG 45IF/12 Green

[> Web link](#)



Fitting style
Flushmount sinks / Flat-mount inset

Model
VG 45IF/12 Green

Material
Stainless steel 18/10

Article no.
10.105.780.00

Cabinet size
50 cm

Basket
3½" Tipò

Surface
Matt

Price CHF
935.- excl. VAT

Dimensions
450x420x160mm

Corner radius
35 mm

Overflow and drain technology



Sieve - type S



Swivelling overflow cap

Basket pre-assembly
Assembly of the valve at the factory

Dispenser - mounting option
Free choice of positioning

Green Line



Green Line is an independent product version geared towards sustainability.

Standard pull-up knob

Prices (as of 14.05.26/excl. VAT)

Model	Material	Basket	Article no.	Price CHF	
Vantis VG 45IF/12 Green	Stainless steel 18/10, Matt	3½" Tipò	10.105.780.00	935.-	> Weblink
		3½" TouchFlow	10.105.778.00	1'182.-	> Weblink
		3½" Space-saving	10.105.779.00	984.-	> Weblink

Accessory

You can find the complete range of accessories here [> Weblink](#)

Optional accessories



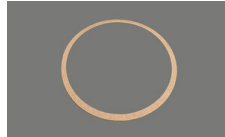
[> Weblink](#)
40.001.929.00 / CHF 44.-
3 ½" Tipò strainer basket complete, Ø 110 mm, matt



[> Weblink](#)
40.002.318.00 / CHF 32.-
Overflow cap sFlow swivelling



[> Weblink](#)
40.000.094.00 / CHF 5.-
Moulded gasket 1½", Ø 53 mm



[> Weblink](#)
40.001.395.00 / CHF 5.-
Flat gasket, FASERFLEX, fitting: basket type S



[> Weblink](#)
40.001.394.00 / CHF 5.-
Moulded gasket, fitting: basket type S



[> Weblink](#)
40.000.096.00 / CHF 7.-
Special screw M 12 x 1.5, L = 28 mm

Spares

You can find the compatible range of spares here [> Weblink](#)

Vantis VG 45IF/12 Green

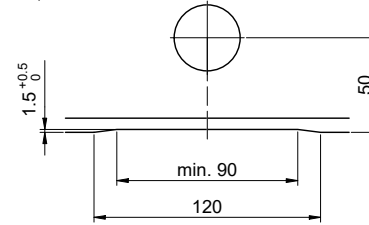
Ausschnitt für flächenbündigen Einbau - Randbreite 12mm:
Mesure de coupure pour montage à fleur - Bord de 12mm de largeur:
Intaglio per montaggio a filo top - Larghezza bordo 12mm:

Bohrung für Zug- und Druckknöpfe Ø14
 Bohrung für Drehknopf Ø25

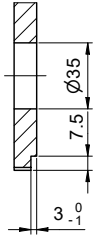
Trou pour boutons et Poussoirs de commande Ø14
 Trou pour bouton rotatif Ø25

Foro per Pomelli tiranti e Pomelli pulsanti Ø14
 Foro per Pomolo girevoli Ø25

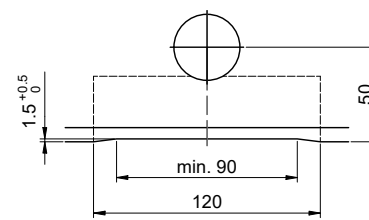
Für 12mm Arbeitsplatte.
 Pour plan de travail de 12mm.
 Per piano di lavoro da 12mm.



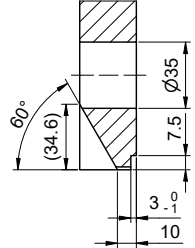
A-A (1:2)



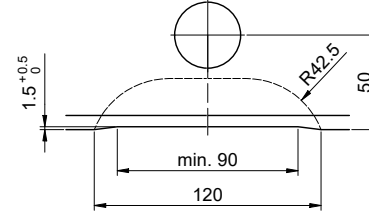
Für 13 - 30mm Arbeitsplatte.
 Pour plan de travail de 13 - 30mm.
 Per piano di lavoro da 13 - 30mm.



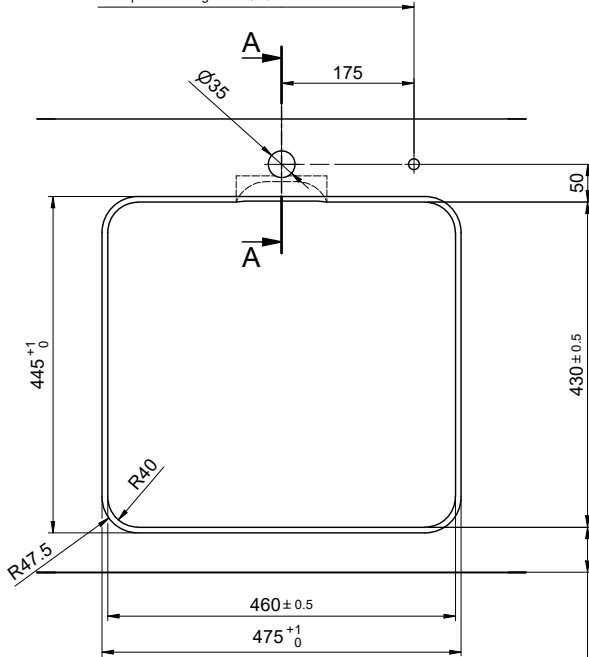
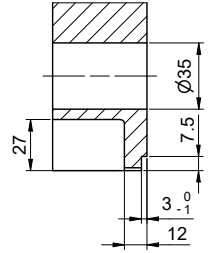
A-A (1:2)



Für 13 - 50mm Arbeitsplatte.
 Pour plan de travail de 13 - 50mm.
 Per piano di lavoro da 13 - 50mm.



A-A (1:2)



min. 60mm bei stehender Traverse.
 min. 80mm bei liegender Traverse.

min. 60mm avec traverse debout.
 min. 80mm avec traverse allongé.

min. 60mm con traversa stante.
 min. 80mm con traversa coricata.

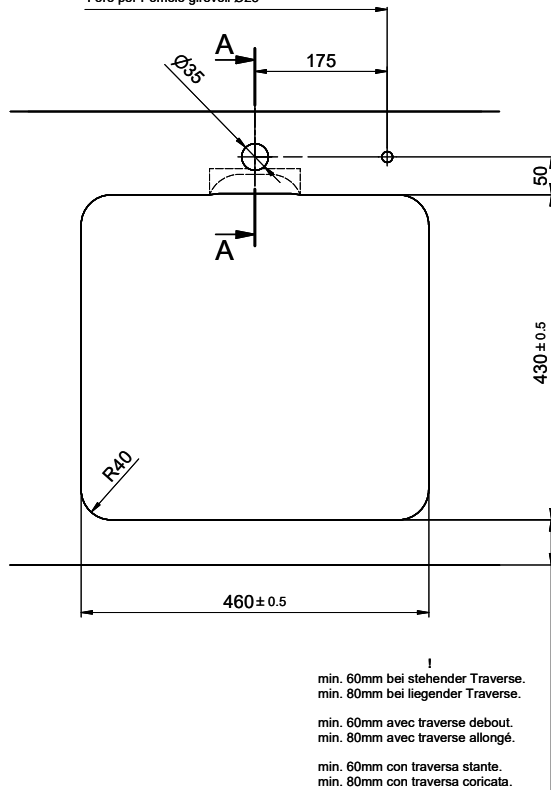
Vantis VG 45IF/12 Green

Ausschnitt für flach aufliegenden Einbau - Randbreite 12mm:
Mesure de coupure pour montage en appui - Bord de 12mm de largeur:
Intaglio per montaggio soprapiano - Larghezza bordo 12mm:

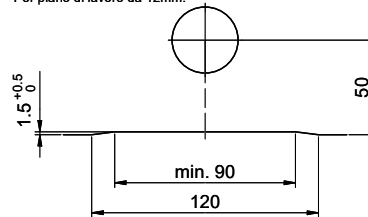
Bohrung für Zug- und Druckknöpfe Ø14
 Bohrung für Drehknopf Ø25

Trou pour boutons et Pousoirs de commande Ø14
 Trou pour bouton rotatif Ø25

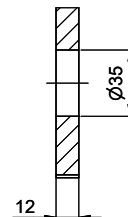
Foro per Pomelli tiranti e Pomelli pulsanti Ø14
 Foro per Pomolo girevoli Ø25



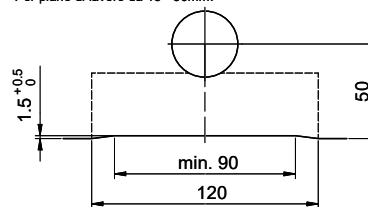
Für 12mm Arbeitsplatte.
 Pour plan de travail de 12mm.
 Per piano di lavoro da 12mm.



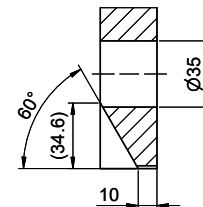
A-A (1 : 2)



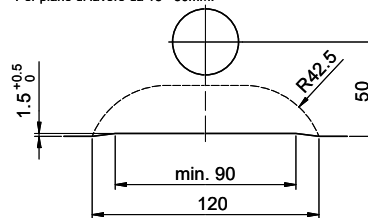
Für 13 - 30mm Arbeitsplatte.
 Pour plan de travail de 13 - 30mm.
 Per piano di lavoro da 13 - 30mm.



A-A (1 : 2)



Für 13 - 50mm Arbeitsplatte.
 Pour plan de travail de 13 - 50mm.
 Per piano di lavoro da 13 - 50mm.



A-A (1 : 2)

