

## Vantis VG 45U Green

[> Web link](#)



**Fitting style**  
Undermount bowls

**Model**  
VG 45U Green

**Material**  
Stainless steel 18/10

**Article no.**  
10.105.764.00

**Cabinet size**  
50 cm

**Basket**  
3½" Tipó

**Surface**  
Matt

**Price CHF**  
751.- excl. VAT

**Dimensions**  
450x420x160mm

**Corner radius**  
35 mm

### Overflow and drain technology



Sieve - type S



Swivelling overflow cap

**Basket pre-assembly**  
Assembly of the valve at the factory

**Dispenser - mounting option**  
Free choice of positioning

### Green Line



Green Line is an independent product version geared towards sustainability.

**Standard pull-up knob**

### Prices (as of 14.05.26/excl. VAT)

| Model               | Material                    | Basket           | Article no.   | Price CHF |                              |
|---------------------|-----------------------------|------------------|---------------|-----------|------------------------------|
| Vantis VG 45U Green | Stainless steel 18/10, Matt | 3½" Tipó         | 10.105.764.00 | 751.-     | <a href="#">&gt; Weblink</a> |
|                     |                             | 3½" TouchFlow    | 10.105.762.00 | 998.-     | <a href="#">&gt; Weblink</a> |
|                     |                             | 3½" Space-saving | 10.105.763.00 | 800.-     | <a href="#">&gt; Weblink</a> |

### Accessory

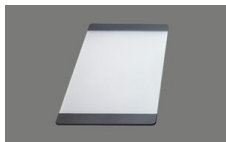
#### Optional accessories



[> Weblink](#)  
40.000.914.00 / CHF 106.-  
Colander, perforated



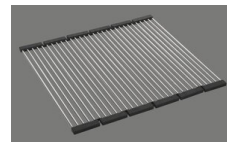
[> Weblink](#)  
40.001.290.00 / CHF 106.-  
Colander, unperforated



[> Weblink](#)  
40.000.915.00 / CHF 151.-  
Chopping board, made of glass, white



[> Weblink](#)  
40.001.147.00 / CHF 151.-  
Chopping board, made of wood



[> Weblink](#)  
40.001.138.00 / CHF 125.-  
Inox Pad

### Spares

You can find the compatible range of spares here [> Weblink](#)

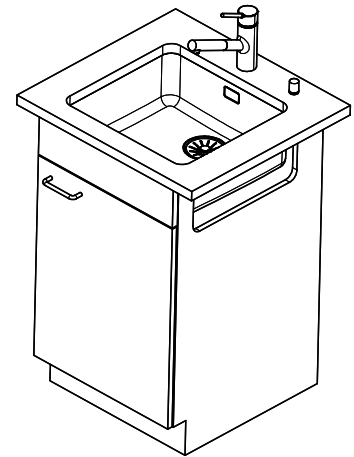
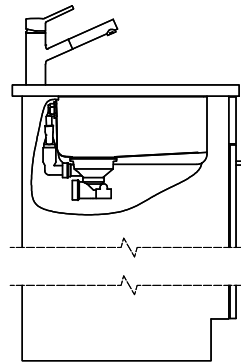
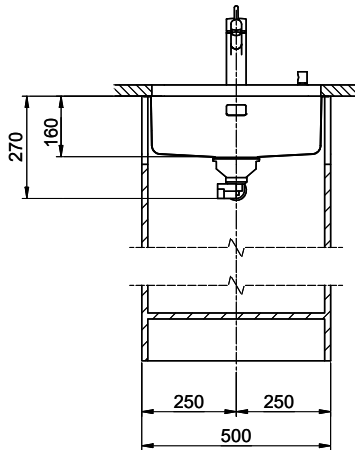
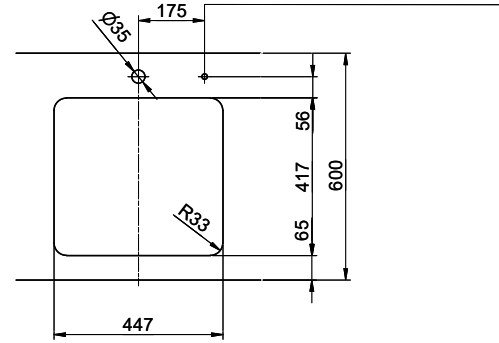
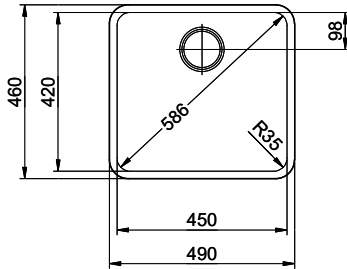
# Vantis VG 45U Green

Masse / Ausschnittkontur  
 Dimensions / contour de découpe  
 Dimensioni / contorno dell'apertura

Bohrung für Zug- und Druckknöpfe Ø14  
 Bohrung für Drehknopf Ø25

Trou pour boutons et Poussoirs de commande Ø14  
 Trou pour bouton rotatif Ø25

Foro per Pomelli tiranti e Pomelli pulsanti Ø14  
 Foro per Pomolo girevoli Ø25



Für dieses Dokument und der darin abgezeichneten Gegenstände behalten wir uns alle Rechte vor. Verwendet dieses Dokument ohne unsere Zustimmung ist verboten. © Copyright 2020 Suter Inox AG. All rights reserved.