

Vantis VG 50-35IF/12 Green

[> Web link](#)



Fitting style
Flushmount sinks / Flat-mount inset

Model
VG 50-35IF/12 Green

Material
Stainless steel 18/10

Article no.
10.105.786.00

Cabinet size
55 cm

Basket
3½" Tipò

Surface
Matt

Price CHF
890.- excl. VAT

Dimensions
500x350x160mm

Corner radius
35 mm

Overflow and drain technology



Sieve - type S



Swivelling overflow cap

Basket pre-assembly
Assembly of the valve at the factory

Dispenser - mounting option
Free choice of positioning

Green Line



Green Line is an independent product version geared towards sustainability.

Standard pull-up knob

Prices (as of 21.06.26/excl. VAT)

Model	Material	Basket	Article no.	Price CHF	
Vantis VG 50-35IF/12 Green	Stainless steel 18/10, Matt	3½" Tipò	10.105.786.00	890.-	> Weblink
		3½" TouchFlow	10.105.784.00	1'137.-	> Weblink
		3½" Space-saving	10.105.785.00	939.-	> Weblink

Accessory

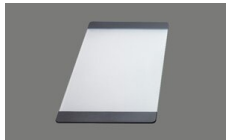
Optional accessories



[> Weblink](#)
40.000.914.00 / CHF 106.-
Colander, perforated



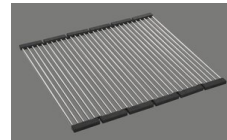
[> Weblink](#)
40.001.290.00 / CHF 106.-
Colander, unperforated



[> Weblink](#)
40.000.915.00 / CHF 151.-
Chopping board, made of glass, white



[> Weblink](#)
40.001.147.00 / CHF 151.-
Chopping board, made of wood



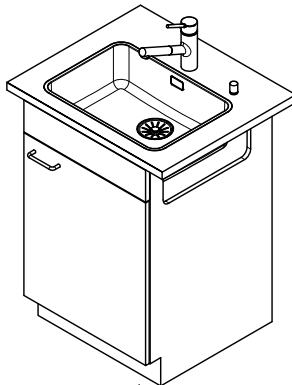
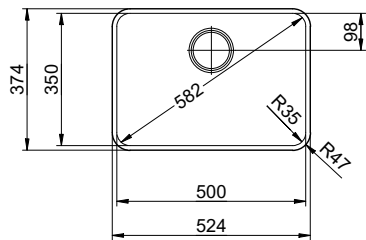
[> Weblink](#)
40.001.138.00 / CHF 125.-
Inox Pad

Spares

You can find the compatible range of spares here [> Weblink](#)

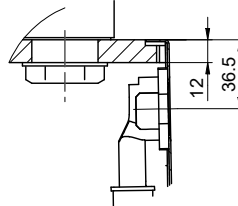
Vantis VG 50-35IF/12 Green

Randbreite 12mm
 Bord de 12mm de largeur
 Larghezza bordo 12mm



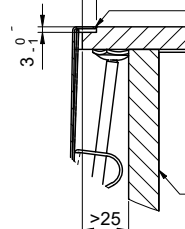
Für 12mm Arbeitsplatte.
 Pour plan de travail de 12mm.
 Per piano di lavoro da 12mm.

X (1 : 2)



Y (1 : 2)
 7.5

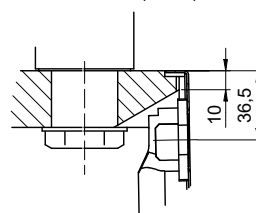
Silikonieren
 Appliquer du silicone
 Applicare il silicone



Traverse
 Transversale
 Traversa

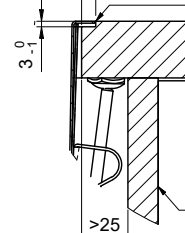
Für 13 - 30mm Arbeitsplatte.
 Pour plan de travail de 13 - 30mm.
 Per piano di lavoro da 13 - 30mm.

X (1 : 2)



Y (1 : 2)
 7.5

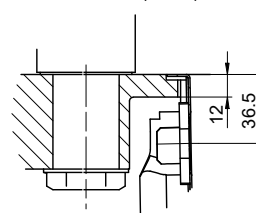
Silikonieren
 Appliquer du silicone
 Applicare il silicone



Traverse
 Transversale
 Traversa

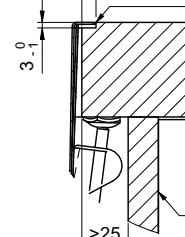
Für 13 - 50mm Arbeitsplatte.
 Pour plan de travail de 13 - 50mm.
 Per piano di lavoro da 13 - 50mm.

X (1 : 2)

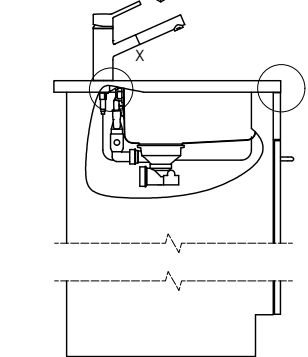
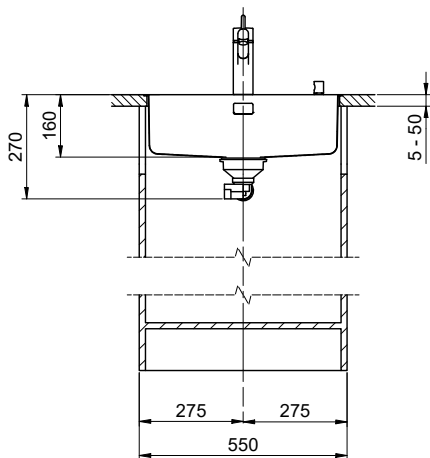


Y (1 : 2)
 7.5

Silikonieren
 Appliquer du silicone
 Applicare il silicone



Traverse
 Transversale
 Traversa



Bei der Planung die Traverse im Möbel beachten!

Faites attention à la barre transversale dans les meubles lors de la planification!

Presta attenzione alla traversa nei mobili durante la pianificazione!

Vom flächenbündigen Einbau in beschichtete Spanplatten raten wir ab.

Nous vous déconseillons le montage à fleur sur des panneaux de particules enduits.

Sconsigliamo il montaggio a filo top in pannelli di truciolato laminato.

Für dieses Dokument sind die darin abgesetzten Gegenstände behalten wir uns alle Rechte vor. Verwendet das Bildmaterial an dieser Stelle nur zu Informationszwecken. © Copyright 2020 Suter Inox AG. All rights reserved.

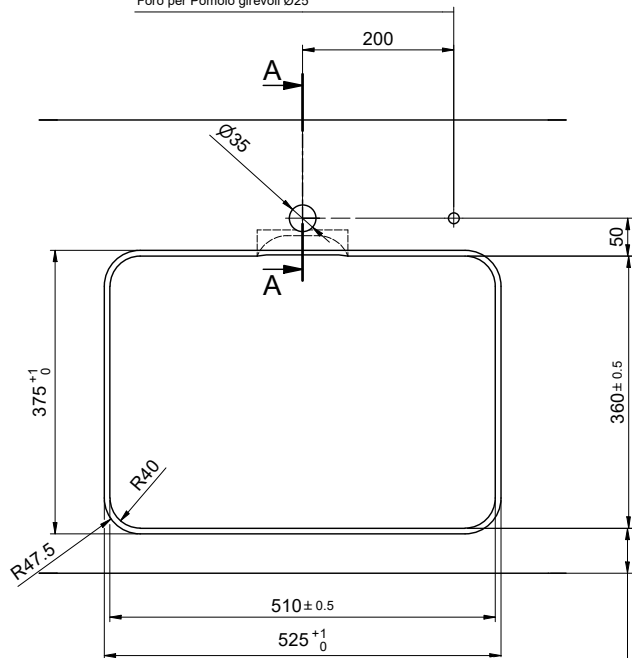
Vantis VG 50-35IF/12 Green

Ausschnitt für flächenbündigen Einbau - Randbreite 12mm:
Mesure de coupe pour montage à fleur - Bord de 12mm de largeur:
Intaglio per montaggio a filo top - Larghezza bordo 12mm:

Bohrung für Zug- und Druckknöpfe Ø14
 Bohrung für Drehknopf Ø25

Trou pour boutons et Pousoirs de commande Ø14
 Trou pour bouton rotatif Ø25

Foro per Pomelli tiranti e Pomelli pulsanti Ø14
 Foro per Pomolo girevoli Ø25

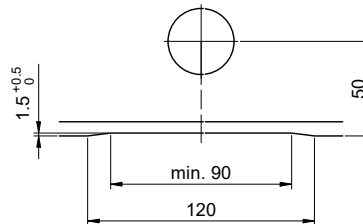


min. 60mm bei stehender Traverse.
 min. 80mm bei liegender Traverse.

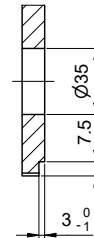
min. 60mm avec traverse debout.
 min. 80mm avec traverse allongé.

min. 60mm con traversa stante.
 min. 80mm con traversa coricata.

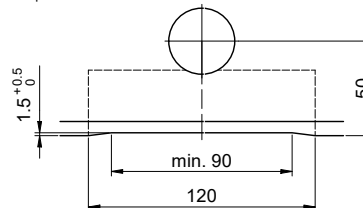
Für 12mm Arbeitsplatte.
 Pour plan de travail de 12mm.
 Per piano di lavoro da 12mm.



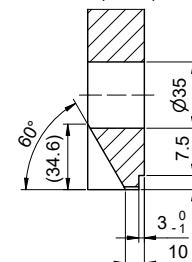
A-A (1 : 2)



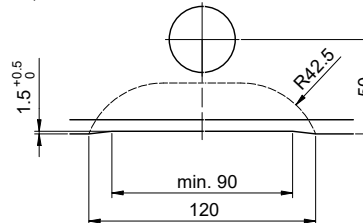
Für 13 - 30mm Arbeitsplatte.
 Pour plan de travail de 13 - 30mm.
 Per piano di lavoro da 13 - 30mm.



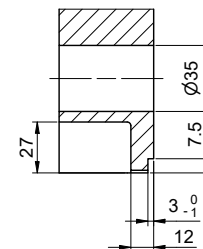
A-A (1 : 2)



Für 13 - 50mm Arbeitsplatte.
 Pour plan de travail de 13 - 50mm.
 Per piano di lavoro da 13 - 50mm.



A-A (1 : 2)



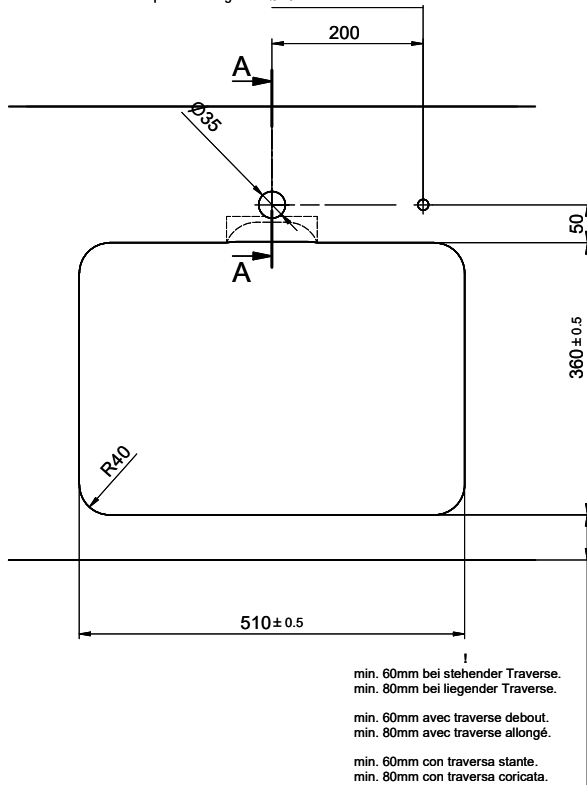
Vantis VG 50-35IF/12 Green

Ausschnitt für flach aufliegenden Einbau - Randbreite 12mm:
Mesure de coupure pour montage en appui - Bord de 12mm de largeur:
Intaglio per montaggio soprapiano - Larghezza bordo 12mm:

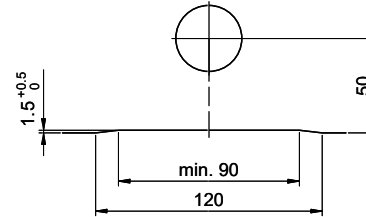
Bohrung für Zug- und Druckknöpfe Ø14
 Bohrung für Drehknopf Ø25

Trou pour boutons et Poussoirs de commande Ø14
 Trou pour bouton rotatif Ø25

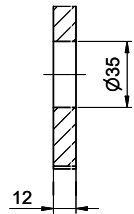
Foro per Pomelli tiranti e Pomelli pulsanti Ø14
 Foro per Pomolo girevoli Ø25



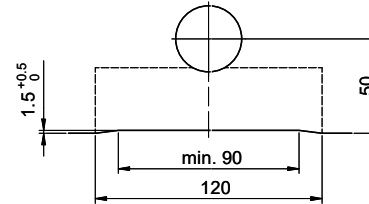
Für 12mm Arbeitsplatte.
 Pour plan de travail de 12mm.
 Per piano di lavoro da 12mm.



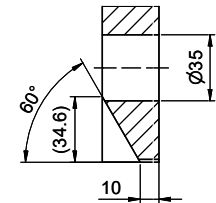
A-A (1 : 2)



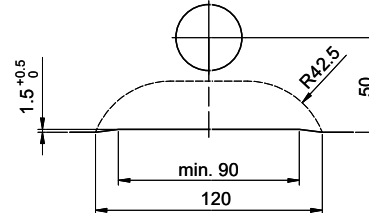
Für 13 - 30mm Arbeitsplatte.
 Pour plan de travail de 13 - 30mm.
 Per piano di lavoro da 13 - 30mm.



A-A (1 : 2)



Für 13 - 50mm Arbeitsplatte.
 Pour plan de travail de 13 - 50mm.
 Per piano di lavoro da 13 - 50mm.



A-A (1 : 2)

