

## Vantis VG 55IF/12 Green

[> Web link](#)



**Fitting style**  
Flushmount sinks / Flat-mount inset

**Model**  
VG 55IF/12 Green

**Material**  
Stainless steel 18/10

**Article no.**  
10.105.788.00

**Cabinet size**  
60 cm

**Basket**  
3½" Space-saving

**Surface**  
Matt

**Price CHF**  
1'353.- excl. VAT

**Dimensions**  
550x420x160mm

**Corner radius**  
35 mm

### Overflow and drain technology



Sieve - type S



Swivelling overflow cap

**Basket pre-assembly**  
Assembly of the valve at the factory

**Dispenser - mounting option**  
Free choice of positioning

### Green Line



Green Line is an independent product version geared towards sustainability.

### Standard



Advant

### Prices (as of 14.05.26/excl. VAT)

Model	Material	Basket	Article no.	Price CHF
Vantis VG 55IF/12 Green	Stainless steel 18/10, Matt	3½" Tipo	10.105.789.00	1'304.- <a href="#">&gt; Weblink</a>
		3½" TouchFlow	10.105.787.00	1'551.- <a href="#">&gt; Weblink</a>
		3½" Space-saving	10.105.788.00	1'353.- <a href="#">&gt; Weblink</a>

### Accessory

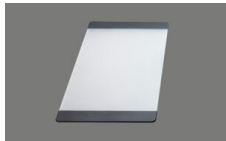
#### Optional accessories



[> Weblink](#)  
40.000.914.00 / CHF  
106.-  
Colander, perforated



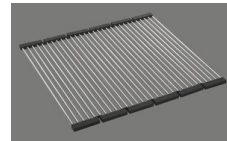
[> Weblink](#)  
40.001.290.00 / CHF  
106.-  
Colander, unperforated



[> Weblink](#)  
40.000.915.00 / CHF  
151.-  
Chopping board, made of glass, white



[> Weblink](#)  
40.001.147.00 / CHF  
151.-  
Chopping board, made of wood



[> Weblink](#)  
40.001.138.00 / CHF  
125.-  
Inox Pad

### Spares

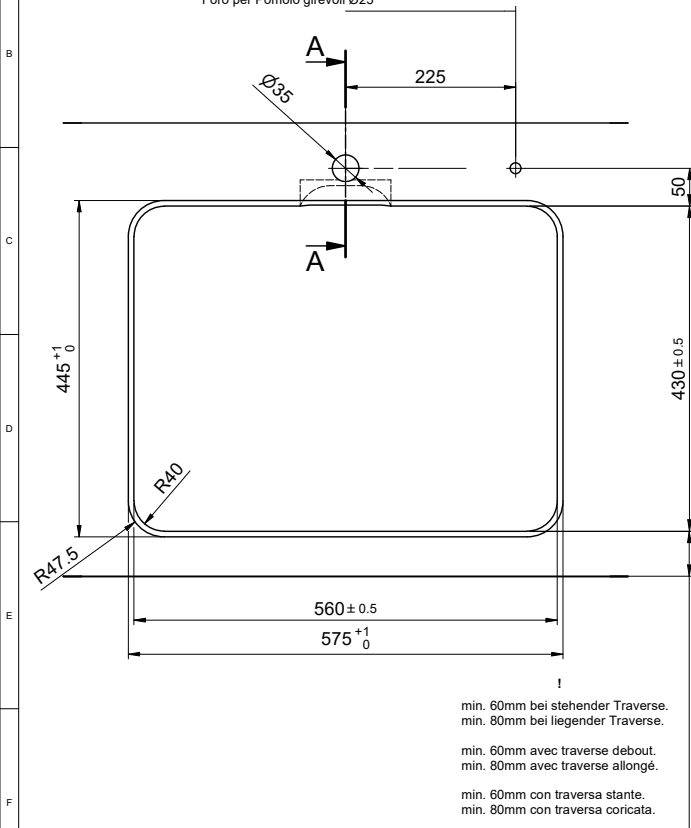
You can find the compatible range of spares here [> Weblink](#)



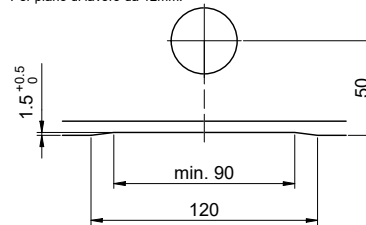
Bohrung für Zug- und Druckknöpfe Ø14  
 Bohrung für Drehknopf Ø25

Trou pour boutons et Poussoirs de commande Ø14  
 Trou pour bouton rotatif Ø25

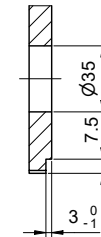
Foro per Pomelli tiranti e Pomelli pulsanti Ø14  
 Foro per Pomolo girevoli Ø25



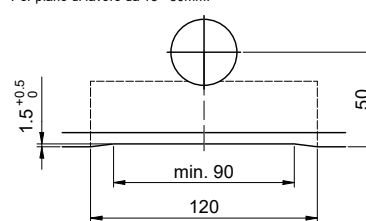
Für 12mm Arbeitsplatte.  
 Pour plan de travail de 12mm.  
 Per piano di lavoro da 12mm.



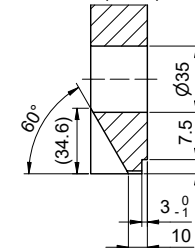
A-A (1 : 2)



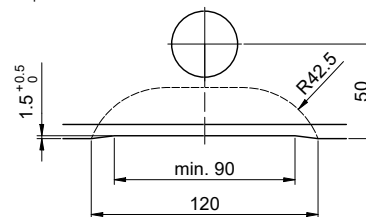
Für 13 - 30mm Arbeitsplatte.  
 Pour plan de travail de 13 - 30mm.  
 Per piano di lavoro da 13 - 30mm.



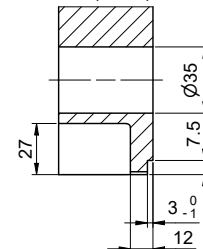
A-A (1 : 2)



Für 13 - 50mm Arbeitsplatte.  
 Pour plan de travail de 13 - 50mm.  
 Per piano di lavoro da 13 - 50mm.



A-A (1 : 2)



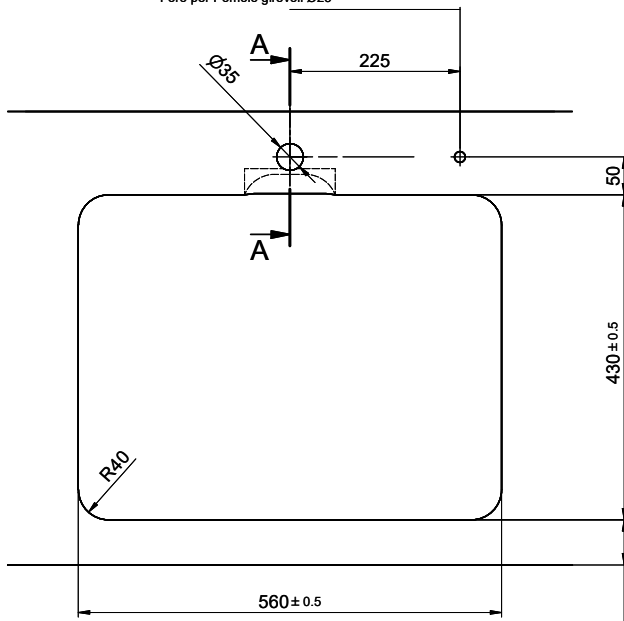
# Vantis VG 55IF/12 Green

**Ausschnitt für flach aufliegenden Einbau - Randbreite 12mm:**  
**Mesure de coupure pour montage en appui - Bord de 12mm de largeur:**  
**Intaglio per montaggio soprapiano - Larghezza bordo 12mm:**

Bohrung für Zug- und Druckknöpfe Ø14  
 Bohrung für Drehknopf Ø25

Trou pour boutons et Pousoirs de commande Ø14  
 Trou pour bouton rotatif Ø25

Foro per Pomelli tiranti e Pomelli pulsanti Ø14  
 Foro per Pomolo girevoli Ø25



!  
 min. 60mm bei stehender Traverse.  
 min. 80mm bei liegender Traverse.

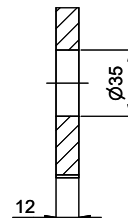
min. 60mm avec traverse debout.  
 min. 80mm avec traverse allongé.

min. 60mm con traversa stante.  
 min. 80mm con traversa coricata.

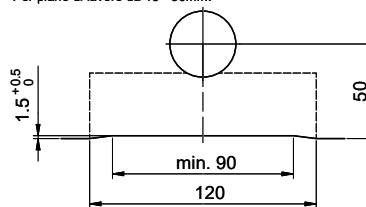
Für 12mm Arbeitsplatte.  
 Pour plan de travail de 12mm.  
 Per piano di lavoro da 12mm.



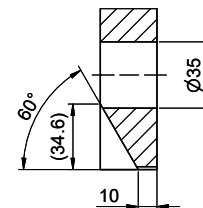
A-A (1 : 2)



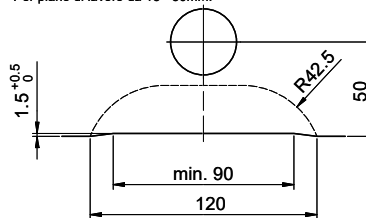
Für 13 - 30mm Arbeitsplatte.  
 Pour plan de travail de 13 - 30mm.  
 Per piano di lavoro da 13 - 30mm.



A-A (1 : 2)



Für 13 - 50mm Arbeitsplatte.  
 Pour plan de travail de 13 - 50mm.  
 Per piano di lavoro da 13 - 50mm.



A-A (1 : 2)

