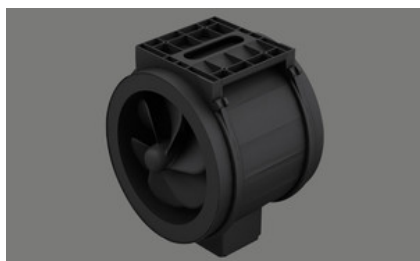


**BORA duct fan ULI**
[> Web link](#)


**Article no.**  
40.001.763.00

**VRG**  
2.31  
**Price CHF**  
1303.- O excl. VAT

**Product description**
**Technical data**

Supply voltage  
230 V  
Frequency  
50 Hz  
Power consumption  
304 W  
Maximum current consumption  
2,1 A  
Maximum ambient temperature  
45 °C  
Maximum volume  
1215 m<sup>3</sup> /h  
Maximum static pressure  
676 Pa  
Weight (incl. packing)  
6,0 kg  
Dimensions (width x depth x height)  
263 x 215 (500) x 299 mm  
Material housing  
Plastic  
Connection cable  
10 m  
Duct connection dimensions  
- without reducer Ø 250 mm  
- with reduction Ø 155 mm

**Product description**

- For installation in a round duct system with a diameter of Ø 250 mm or Ø 155 mm when using a duct reducer
- Highest energy efficiency class and low energy consumption (EC technology)
- Stepless power control
- The terminal box can be rotated to the desired position
- Fasteners are to be provided by the customer
- Mounting fastening plate is integrated
- In case of an exhaust air path of more than 6 m length or high pressure losses, the tube fan can be supplemented with another BORA fan module
- In the case of two fan modules in an exhaust air duct system, a minimum distance of 3 m must be maintained between them
- The fan is designed for use with the BORA hob fume cupboards PKA3 and CKA2
- Not suitable for installation in wooden furniture
- Allow at least 3 m distance to the fume cupboard opening and an additional silencer
- The air flow direction is indicated by an arrow on the housing or the fan wheel must point in the direction of the cooktop fume hood when inserting the tube fan

**Scope of delivery**

- BORA ULI tube fan
- assembly instruction
- Pipe reducer 250-155 ULIRR (2 pieces)

**Optional accessories**

- Universal extension mains cable EC 10 m UVNLE10
- Universal extension control cable EC 10 m UVSLE10

Translated with [www.DeepL.com/Translator](http://www.DeepL.com/Translator) (free version)

BORA duct fan ULI

> Web link

Accessory

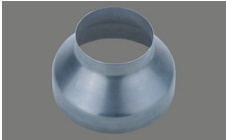
Optional accessories



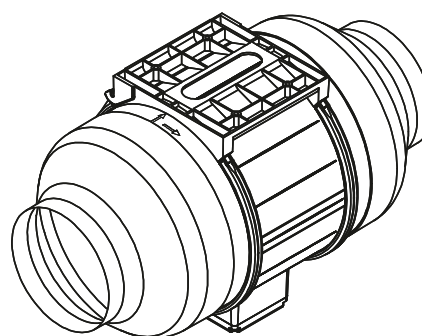
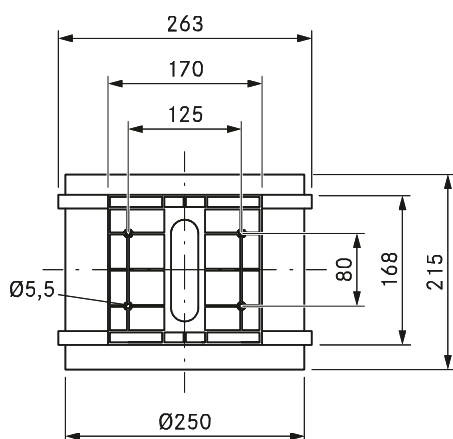
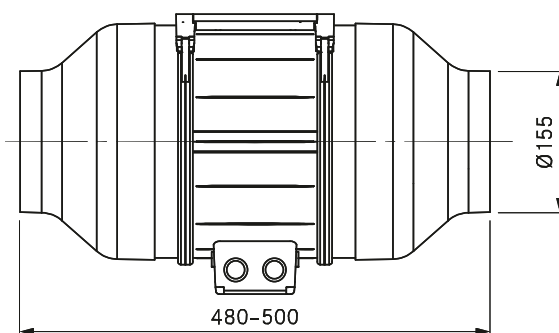
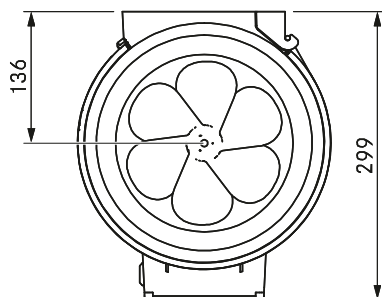
> Weblink  
40.001.599.00 / CHF 75.-  
BORA mains cable EC  
10 m



> Weblink  
40.001.600.00 / CHF 62.-  
BORA control line EC 10  
m



> Weblink  
40.001.598.00 / CHF  
116.-  
Duct reducer 250?150



### Technical data

Supply voltage	220 – 240 V
Frequency	50 Hz
Power consumption	304 W
Current consumption	2.1 A
Power supply cable length	10 m
Control line length	10 m
Dimensions (width x depth x height)	250 x 215 (500) x 299 mm
Weight (incl. accessories/packaging)	6.0 kg
Casing material	Plastic
duct connection	without reduction Ø 250 mm, with reduction Ø 155 mm
Maximum ambient temperature	45°C
Maximum flow volume	1215 m³/h
Maximum static pressure	676 Pa

### Product description

- Energy-saving fan with EC technology
- Rotatable terminal box
- Pre-installed mounting plate
- Complete BORA system

### Scope of delivery

- ULI duct fan
- Duct reducer Ø 250 to 155 mm ULIRR (2 pieces)
- 2 x Ferrite sleeve
- Installation instructions

### Accessories

- Universal extension of UVNLE10 mains cable EC 10 m
- Universal extension of UVSLE10 control line EC 10 m

### Product- and planning instructions

- If there are two fan modules in an air duct system, a minimum clearance of 3 m must be maintained between the two fans
- The air flow direction is specified by an arrow on the housing. Furthermore, when using the duct fan, the fan wheel must face the cooktop extractor.
- For installation in a round duct system with a diameter of on average 155 mm, both duct reducers are to be fitted
- A straight leg for the exhaust air of at least 500 mm is to be provided in front of and behind the fan
- The terminal box can be turned to the desired position
- Fixing elements must be provided at the installation site
- The installation fixing plate is integrated
- Not suitable for installation in living areas; do not install in furniture