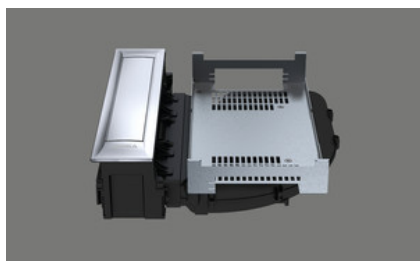


**BORA hob extractor PKA3, Professional 3.0**
[> Web link](#)

**Brief description**

Cooktop extractor

**Mode of operation**

Recirculated-air or exhaust air

**Article no.**

40.002.231.00

**VRG**

2.31

**Price CHF**

2152.- O excl. VAT

**Product description**
**Product description BORA Professional 3.0 hob extractor PKA3**

Power control via control knob  
 Power level display  
 Electric shutter  
 Shutter sensor  
 Stainless steel grease filter  
 Grease filter sensor  
 Automatic hob extractor  
 Automatic run-on  
 Filter service indicator  
 Interface for external devices  
 Safety switch-off  
 Connection option for two  
 BORA universal fan modules

**Technical data**

Supply voltage  
 220 - 240 V  
 Frequency  
 50 Hz  
 Maximum power consumption  
 550 W  
 Weight (incl. accessories and packaging)  
 9.25 kg  
 Dimensions (width x depth x height)  
 482 x 540 x 176 mm  
 Power levels  
 1-9, P  
 Exhaust air connection  
 BORA Ecotube 245 x 89 mm

**Scope of delivery**

Hob extractor PKA3  
 Operating and assembly instructions  
 Height compensation plate set  
 Mounting clamps  
 Control knob  
 Stainless steel grease filter  
 Filter tray  
 Maintenance tray  
 Closing flap  
 Communication cable CAT 5  
 Universal control unit  
 Mains cable 1 m with plug type 12, 10 A  
 Cable control knob - interface / fume cupboard  
 Duct piece straight and duct piece bend

**Planning information**

Possible as recirculation or exhaust air system  
 Can be combined with all BORA Professional hobs and BORA Universal fan modules  
 Worktop height can be individually adjusted  
 Worktop depth:  $\geq 700$  (in combination with the straight duct piece  $\geq 650$ )  
 Air ducting possible to the right or left  
 Fan can be placed in the plinth area due to low installation height (100 mm) (only when using the ULS plinth fan).  
 Mounting type: flush-mounted or top-mounted  
 Universal control unit as central connection point can be placed easily and space-saving in the plinth area.  
 Connection between fume cupboard and universal control unit by means of a CAT 5 communication cable.  
 The drawers or shelves in the base unit must be removable for maintenance and cleaning purposes.  
 The BORA Ecotube duct system is optimally matched to the BORA hob fume cupboards and guarantees 100% function and best performance. In the case of an exhaust air path longer than 6m or high pressure losses, an additional universal fan module must be used.

**BORA hob extractor PKA3, Professional 3.0**
[> Web link](#)

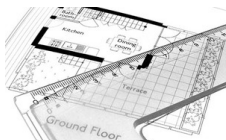
**Planning note:** With these units, the duct connection is designed for the BORA Ecotube duct system. To connect BORA Ecotube (connection 245 x 89 mm) with Naber connections (222 x 89 mm), an adapter (EFA, 40.001.779.00) is available / can be ordered separately. Can be freely combined with all BORA universal fan modules (can be ordered separately, fan motor not included in PKA3 scope of delivery).

**Accessory**
**Optional accessories**


> Weblink  
40.001.767.00 / CHF 97.-  
BORA socket USTJ



> Weblink  
40.002.034.00 / CHF 135.-  
BORA socket USTJAB All Black



> Weblink  
80.100.016.00 / CHF 359.-  
Ventilation planning



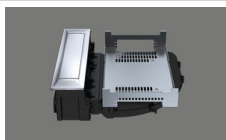
> Weblink  
80.100.017.00 / CHF 192.-  
Revision of the planning

**Other Articles**
[You can find additional articles here > Weblink](#)

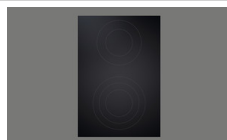

40.002.292.00 / CHF 9632.-  
BORA Set PKA3 + PKFI3 + PKT3, Professional 3.0



40.002.294.00 / CHF 7067.-  
BORA Set PKA3 + 2x PKCH3, Professional 3.0



40.002.231.00 / CHF 2152.-  
BORA hob extractor PKA3, Professional 3.0



40.002.532.00 / CHF 1730.-  
HiLight Professional Cooktop All Black



40.002.291.00 / CHF 10341.-  
BORA Set PKA3AB + 2x PKFI3 Professional 3.0



40.002.293.00 / CHF 10852.-  
BORA Set PKA3AB + PKFI3 + PKT3, Professional 3.0



40.002.295.00 / CHF 8287.-  
BORA Set PKA3AB + 2x PKCH3, Professional 3.0



40.002.232.00 / CHF 3006.-  
BORA hob extractor PKA3AB All Black, Professional 3.0



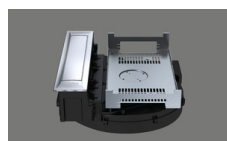
40.002.296.00 / CHF 8377.-  
BORA Set PKAS3 + 2x PKFI3 Professional 3.0



40.002.298.00 / CHF 8888.-  
BORA Set PKAS3 + PKFI3 + PKT3, Professional 3.0



40.002.300.00 / CHF 6323.-  
BORA Set PKAS3 + 2x PKCH3, Professional 3.0



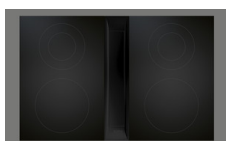
40.002.233.00 / CHF 3229.-  
BORA hob extraction system PKAS3, Professional 3.0



40.002.297.00 / CHF 9597.-  
BORA Set PKAS3AB + 2x PKFI3AB Professional 3.0



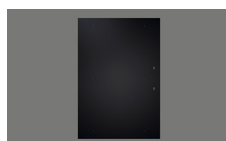
40.002.299.00 / CHF 10108.-  
BORA Set PKAS3AB + PKFI3 + PKT3, Professional 3.0



40.002.301.00 / CHF 7543.-  
BORA Set PKAS3AB + 2x PKCH3, Professional 3.0



40.002.234.00 / CHF 4083.-  
BORA hob extraction system PKAS3AB All Black, Professional 3.0



40.002.239.00 / CHF 2574.-  
BORA PKFI3 surface induction glass ceramic hob, Professional 3.0



40.002.535.00 / CHF 2757.-  
BORA PKFI3AB surface induction glass ceramic hob, Professional 3.0, All Black



40.002.242.00 / CHF 3085.-  
BORA PKT3 Teppan stainless steel grill, Professional 3.0



40.002.539.00 / CHF 3268.-  
BORA PKT3AB Teppan stainless steel grill, Professional 3.0, All Black



40.002.237.00 / CHF 1547.-  
BORA PKCH3 Hyper glass ceramic hob, Professional 3.0



40.002.534.00 / CHF 1730.-  
BORA PKCH3AB Hyper glass ceramic hob, Professional 3.0, All Black



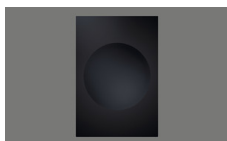
40.002.288.00 / CHF 3973.-  
BORA Set PKA3 + ULS, Professional 3.0



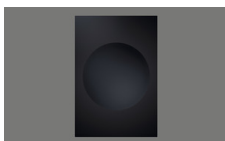
40.002.238.00 / CHF 2238.-  
BORA PKI3 induction glass ceramic hob, Professional 3.0

**BORA hob extractor PKA3, Professional 3.0**
[> Web link](#)


40.002.537.00 / CHF 2421.-  
BORA PKI3AB induction glass ceramic hob, Professional 3.0, All Black



40.002.240.00 / CHF 2767.-  
BORA PKIW3 Induction Glass Ceramic Wok, Professional 3.0



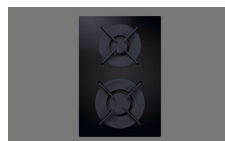
40.002.538.00 / CHF 2950.-  
BORA PKIW3AB Induction Glass Ceramic Wok, Professional 3.0, All Black



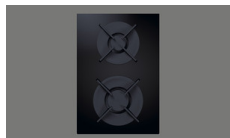
40.002.235.00 / CHF 1547.-  
BORA PKC3 HiLight glass ceramic hob, Professional 3.0



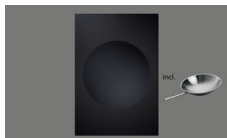
40.002.289.00 / CHF 4827.-  
BORA Set PKA3AB + ULS, Professional 3.0



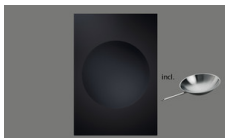
40.002.241.00 / CHF 2771.-  
BORA PKG3 gas glass ceramic hob, Professional 3.0



40.002.536.00 / CHF 2954.-  
BORA PKG3AB gas glass ceramic hob, Professional 3.0, All Black



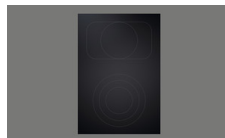
40.002.287.00 / CHF 3367.-  
BORA Set PKIW3 + HIW1, Professional 3.0



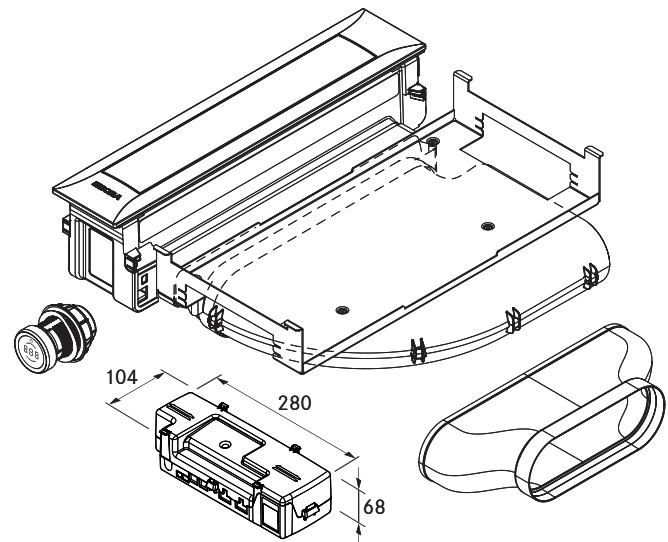
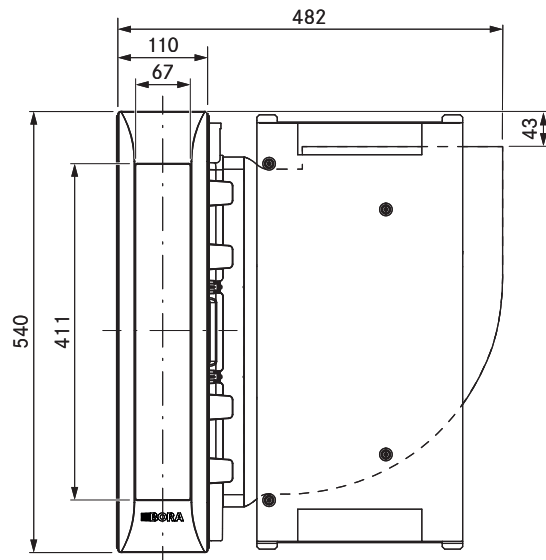
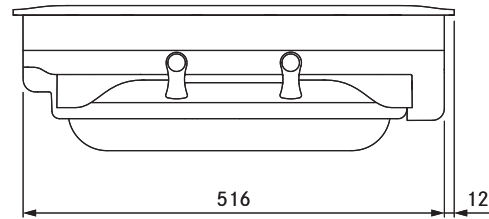
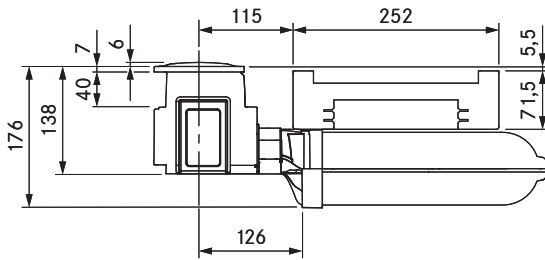
40.002.552.00 / CHF 3550.-  
BORA Set PKIW3AB + HIW1, Professional 3.0, All Black



40.002.236.00 / CHF 1583.-  
BORA PKCB3 HiLight glass ceramic hob, Professional 3.0



40.002.533.00 / CHF 1766.-  
BORA PKCB3AB HiLight glass ceramic hob, Professional 3.0, All Black



### technical data

Supply voltage	220 – 240 V
Frequency	50/60 Hz
Maximum power consumption	550 W
Power supply cable length	2 m
Dimensions (width x depth x height)	482 x 540 x 176 mm
Weight (incl. accessories/packaging)	9.25 kg
Cooktop extractor power levels	1 – 9, P
duct connection	BORA Ecotube

### Product description

- Intuitive control knob
- Automatic cover flap
- Premium design
- Minimum volume
- Simple cleaning
- Integrated grease drip pan
- Genuine stainless steel grease filter
- Modular system
- Automatic extractor control
- Demo mode

### Scope of delivery

- Cooktop extractor PKA3 with integrated 90° bend
- Straight duct element
- Control knob
- cover flap
- stainless steel grease filter
- Filter tray
- Maintenance tray
- CAT 5 communication cable
- Universal control unit
- connection cable for the control knob
- operating and installation instructions
- height adjustment plate set
- Mounting clamps
- Power supply cable with type E + F plugs
- Ecotube seal flat EFD

### Accessories

- PKA1FF stainless steel grease filter
- PKA1VK cover flap
- PKA1FW filter tray
- UNLI type I power supply cable (AUS)
- UNLJ type J power supply cable (CH)
- UNLG type G power supply cable (GB-IE)
- UNLB type B power supply cable (PH)
- UNLH type H power supply cable (IL)

### product- and planning instructions

- Suitable for use as a recirculation or exhaust system
- Compatible with all BORA Professional 3.0 cooktops and BORA Universal fan modules
- Use of an additional fan module is possible for very long or complex exhaust air channels
- The worktop height can be adjusted as necessary
- Worktop depth:  $\geq 700$  mm (in conjunction with the straight duct element  $\geq 650$  mm)
- Airflow possible to the right or left
- Fan can be positioned in the plinth area as a result of the low installation height (100 mm) (when using the ULS plinth fan only)
- Installation type: flush or surface-mounted
- Universal control unit as central connection point can be simply and compactly positioned in the plinth area
- The extractor and Universal control unit are connected by a CAT 5 communication cable
- The drawers and/or shelves in the floor unit must be removable for maintenance and cleaning purposes
- The BORA Ecotube duct system is optimally tailored to the BORA cooktop extractors and guarantees 100% functionality and optimum performance
- The Professional cooktop extractor system can be combined with all BORA sockets