

BORA hob extractor PKA3AB All Black, Professional 3.0
[> Web link](#)

Brief description

Cooktop extractor

Mode of operation

Recirculated-air or exhaust air

Article no.

40.002.232.00

VRG

2.31

Price CHF

3006.- O excl. VAT

Product description
Product description BORA Professional 3.0 hob extractor PKA3AB All Black

Power control via control knob
 Power level display
 Electric shutter
 Shutter sensor
 Stainless steel grease filter
 Grease filter sensor
 Automatic hob extractor
 Automatic run-on
 Filter service indicator
 Interface for external devices
 Safety switch-off
 Connection option for two BORA universal fan modules
 All Black Version, DLC coated

Technical data

Supply voltage
 220 - 240 V
 Frequency
 50 Hz
 Maximum power consumption
 550 W
 Weight (incl. accessories and packaging)
 9.25 kg
 Dimensions (width x depth x height)
 482 x 540 x 176 mm
 Power levels
 1-9, P
 Exhaust air connection
 BORA Ecotube 245 x 89 mm

Scope of delivery

Hob extractor PKA3AB
 Operating and assembly instructions
 Height compensation plate set
 Mounting clamps
 Control knob All Black
 Stainless steel grease filter
 Filter tray
 Maintenance tray
 Closure flap
 Communication cable CAT 5
 Universal control unit
 Mains cable 1 m with plug type 12, 10 A
 Cable control knob - interface / fume cupboard
 Duct piece straight and duct piece bend

Planning information

Possible as recirculation or exhaust air system
 Can be combined with all BORA Professional hobs and BORA Universal fan modules
 Worktop height can be individually adjusted
 Worktop depth: ≥ 700 (in combination with the straight duct piece ≥ 650)
 Air ducting possible to the right or left
 Fan can be placed in the plinth area due to low installation height (100 mm) (only when using the ULS plinth fan).
 Mounting type: flush-mounted or top-mounted
 Universal control unit as central connection point can be placed easily and space-saving in the plinth area.
 Connection between fume cupboard and universal control unit by means of a CAT 5 communication cable.
 The drawers or shelves in the base unit must be removable for maintenance and cleaning purposes.
 The BORA Ecotube duct system is optimally matched to the BORA hob fume cupboards and guarantees 100% function and best performance. In the case of an exhaust air path longer than 6m or high pressure losses, an additional universal fan module must be used.

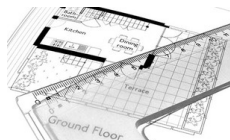
BORA hob extractor PKA3AB All Black, Professional 3.0
[> Web link](#)

Planning note: With these units, the duct connection is designed for the BORA Ecotube duct system. To connect BORA Ecotube (connection 245 x 89 mm) with Naber connections (222 x 89 mm), an adapter (EFA, 40.001.779.00) is available / can be ordered separately. Can be freely combined with all BORA universal fan modules (can be ordered separately, fan motor not included in PKA3AB scope of delivery).

Accessory
Optional accessories

[> Weblink](#)

40.002.034.00 / CHF
135.-
BORA socket USTJAB
All Black


[> Weblink](#)

80.100.016.00 / CHF
359.-
Ventilation planning


[> Weblink](#)

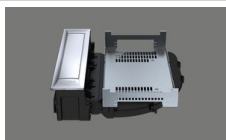
80.100.017.00 / CHF
192.-
Revision of the planning

Other Articles
[You can find additional articles here > Weblink](#)

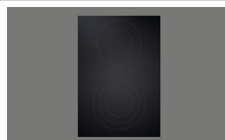

40.002.292.00 / CHF
9632.-
BORA Set PKA3 +
PKFI3 + PKT3,
Professional 3.0



40.002.294.00 / CHF
7067.-
BORA Set PKA3 + 2x
PKCH3, Professional 3.0



40.002.231.00 / CHF
2152.-
BORA hob extractor
PKA3, Professional 3.0



40.002.532.00 / CHF
1730.-
HiLight Professional
Cooktop All Black



40.002.291.00 / CHF
10341.-
BORA Set PKA3AB + 2 x
PKFI3 Professional 3.0



40.002.293.00 / CHF
10852.-
BORA Set PKA3AB +
PKFI3 + PKT3,
Professional 3.0



40.002.295.00 / CHF
8287.-
BORA Set PKA3AB + 2x
PKCH3, Professional 3.0



40.002.232.00 / CHF
3006.-
BORA hob extractor
PKA3AB All Black,
Professional 3.0



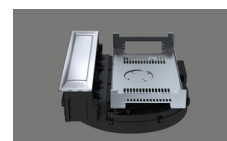
40.002.296.00 / CHF
8377.-
BORA Set PKAS3 + 2x
PKFI3 Professional 3.0



40.002.298.00 / CHF
8888.-
BORA Set PKAS3 +
PKFI3 + PKT3,
Professional 3.0



40.002.300.00 / CHF
6323.-
BORA Set PKAS3 + 2x
PKCH3, Professional 3.0



40.002.233.00 / CHF
3229.-
BORA hob extraction
system PKAS3,
Professional 3.0



40.002.297.00 / CHF
9597.-
BORA Set PKAS3AB +
2x PKFI3AB Professional
3.0



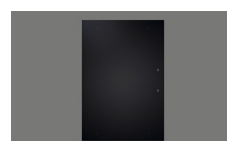
40.002.299.00 / CHF
10108.-
BORA Set PKAS3AB +
PKFI3 + PKT3,
Professional 3.0



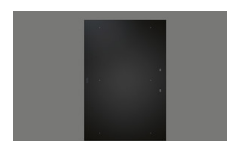
40.002.301.00 / CHF
7543.-
BORA Set PKAS3AB +
2x PKCH3, Professional
3.0



40.002.234.00 / CHF
4083.-
BORA hob extraction
system PKAS3AB All
Black, Professional 3.0



40.002.239.00 / CHF
2574.-
BORA PKFI3 surface
induction glass ceramic
hob, Professional 3.0



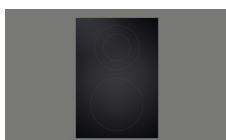
40.002.535.00 / CHF
2757.-
BORA PKFI3AB surface
induction glass ceramic
hob, Professional 3.0, All
Black



40.002.242.00 / CHF
3085.-
BORA PKT3 Teppan
stainless steel grill,
Professional 3.0



40.002.539.00 / CHF
3268.-
BORA PKT3AB Teppan
stainless steel grill,
Professional 3.0, All
Black



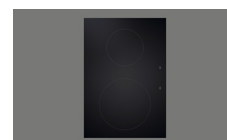
40.002.237.00 / CHF
1547.-
BORA PKCH3 Hyper
glass ceramic hob,
Professional 3.0



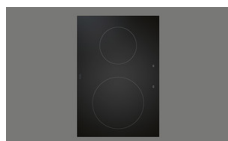
40.002.534.00 / CHF
1730.-
BORA PKCH3AB Hyper
glass ceramic hob,
Professional 3.0, All
Black



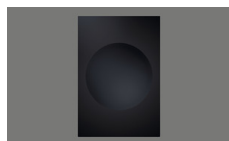
40.002.288.00 / CHF
3973.-
BORA Set PKA3 + ULS,
Professional 3.0



40.002.238.00 / CHF
2238.-
BORA PKI3 induction
glass ceramic hob,
Professional 3.0

BORA hob extractor PKA3AB All Black, Professional 3.0
[> Web link](#)


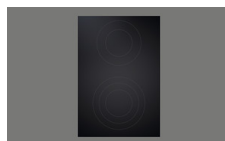
40.002.537.00 / CHF
2421.-
BORA PKI3AB induction
glass ceramic hob,
Professional 3.0, All
Black



40.002.240.00 / CHF
2767.-
BORA PKIW3 Induction
Glass Ceramic Wok,
Professional 3.0



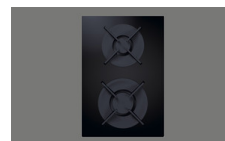
40.002.538.00 / CHF
2950.-
BORA PKIW3AB
Induction Glass Ceramic
Wok, Professional 3.0,
All Black



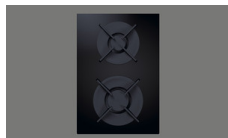
40.002.235.00 / CHF
1547.-
BORA PKC3 HiLight
glass ceramic hob,
Professional 3.0



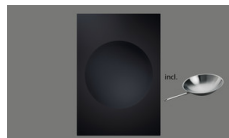
40.002.289.00 / CHF
4827.-
BORA Set PKA3AB +
ULS, Professional 3.0



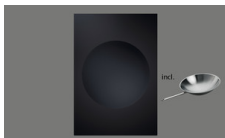
40.002.241.00 / CHF
2771.-
BORA PKG3 gas glass
ceramic hob,
Professional 3.0



40.002.536.00 / CHF
2954.-
BORA PKG3AB gas
glass ceramic hob,
Professional 3.0, All
Black



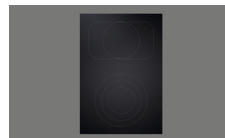
40.002.287.00 / CHF
3367.-
BORA Set PKIW3 +
HIW1, Professional 3.0



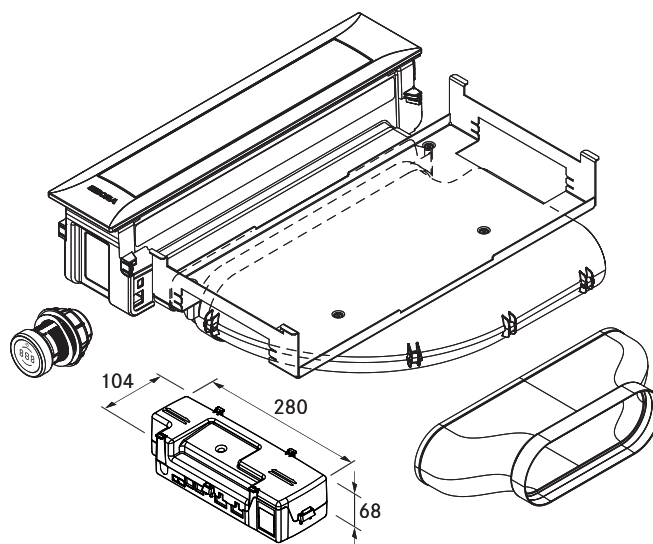
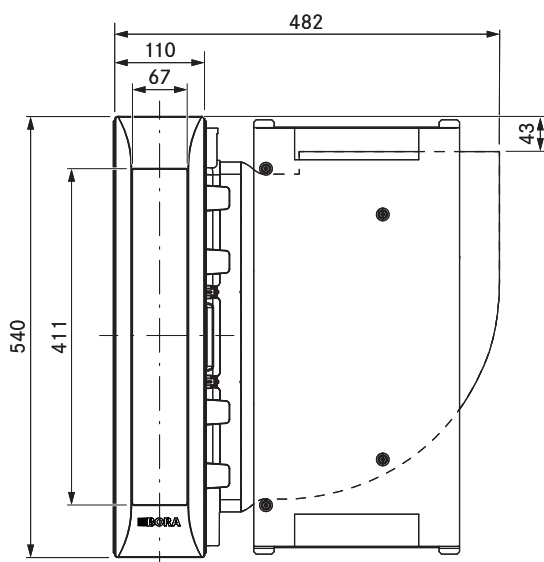
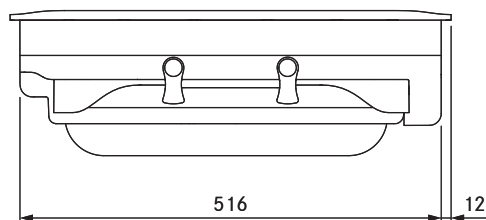
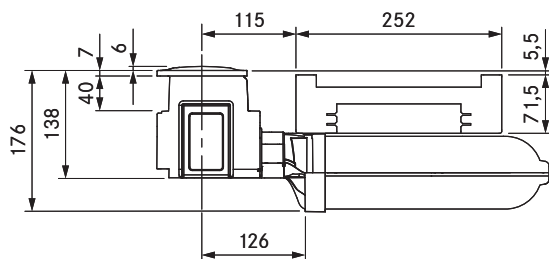
40.002.552.00 / CHF
3550.-
BORA Set PKIW3AB +
HIW1, Professional 3.0,
All Black



40.002.236.00 / CHF
1583.-
BORA PKCB3 HiLight
glass ceramic hob,
Professional 3.0



40.002.533.00 / CHF
1766.-
BORA PKCB3AB HiLight
glass ceramic hob,
Professional 3.0, All
Black



technical data

Supply voltage	220 – 240 V
Frequency	50/60 Hz
Maximum power consumption	550 W
Power supply cable length	2 m
Dimensions (width x depth x height)	482 x 540 x 176 mm
Weight (incl. accessories/packaging)	9.25 kg
Cooktop extractor power levels	1 – 9, P
duct connection	BORA Ecotube

Product description

- Intuitive control knob
- DLC (diamond-like-carbon) coated
- Automatic cover flap
- Premium design
- Minimum volume
- Simple cleaning
- Integrated grease drip pan
- Genuine stainless steel grease filter
- Modular system
- Automatic extractor control

Scope of delivery

- Cooktop extractor PKA3AB with integrated 90° bend
- Straight duct element
- Control knob
- 4 x Pro knob ring All Black PKR3AB
- cover flap
- stainless steel grease filter
- Filter tray
- Maintenance tray
- CAT 5 communication cable
- Universal control unit
- connection cable for the control knob
- operating and installation instructions
- height adjustment plate set
- Mounting clamps
- Power supply cable with type E + F plugs
- Ecotube seal flat EFD

Accessories

- PKA1FF stainless steel grease filter
- PKA1VKAB cover flap
- PKA1FW filter tray
- UNLI type I power supply cable (AUS)
- UNLJ type J power supply cable (CH)
- UNLG type G power supply cable (GB-IE)
- UNLB type B power supply cable (PH)
- UNLH type H power supply cable (IL)

product- and planning instructions

- Suitable for use as a recirculation or exhaust system
- Compatible with all BORA Professional 3.0 cooktops and BORA Universal fan modules
- In addition, four knob ring All Black are included for the adjacent cooktops
- Use of an additional fan module is possible for very long or complex exhaust air channels
- The worktop height can be adjusted as necessary
- Worktop depth: ≥ 700 mm (in conjunction with the straight duct element ≥ 650 mm)
- Airflow possible to the right or left
- Fan can be positioned in the plinth area as a result of the low installation height (100 mm) (when using the ULS plinth fan only)
- Installation type: flush or surface-mounted
- Universal control unit as central connection point can be simply and compactly positioned in the plinth area
- The extractor and Universal control unit are connected by a CAT 5 communication cable
- The drawers and/or shelves in the floor unit must be removable for maintenance and cleaning purposes
- The BORA Ecotube duct system is optimally tailored to the BORA cooktop extractors and guarantees 100% functionality and optimum performance
- The Professional cooktop extractor system can be combined with all BORA sockets