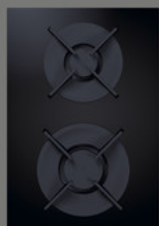


BORA PKG3 gas glass ceramic hob, Professional 3.0
[> Web link](#)

Brief description
 Gas cooktop

Article no.
 40.002.241.00

VRG
 2.31

Price CHF
 2771.- O excl. VAT

Product description
Product description BORA Professional 3.0 Gas-glass ceramic hob PKG3

2-burner gas-glass ceramic hob with high and normal burners

Pot rack removable and dishwasher-safe

Automatic relighting

Keep-warm function

Power level

Residual heat indicator

Pause function

Timer function

Configuration menu

Can be mounted rotated by 180

Cooking zone display on control knob

Demo mode

Automatic boil-on function

Digital power level display on the control knob

Child safety lock

Safety shut-off

Technical data

Supply voltage

230 V

Frequency

50 Hz

Maximum power

5 kW

Connected load maximum

20 W

Fuse protection

1 x 0.5 A

Power levels

1 - 9, P

Weight (incl. accessories / packaging)

11.5 kg

Surface material

SCHOTT CERAN

Mains cable

1,5 m

Dimensions (width x depth x height)

370 x 540 x 73 mm

Power burner front

800 - 3000 W

Normal burner rear

550- 2000 W

Front cooking zone Size

Ø 240 mm

Rear cooking zone Size

Ø 200 mm

Pot rack high burner

270 x 270 x 45 (25) mm

Pot support normal burner

235 x 235 x 45 (25) mm

Scope of delivery:

Gas ceramic hob PKG3

2 x control knobs

Mounting brackets

2 x cast-iron pot supports

Nozzle set G 20/20 mbar natural gas PKGDS2020

Height compensation plate set

Operating and assembly instructions

2 x connecting cable operating toggle

BORA PKG3 gas glass ceramic hob, Professional 3.0

[> Web link](#)

Connecting cable to the fume cupboard
Mains cable 1.5 m (L, N, PE), without plug
Transition piece cylindrical - conical
Seal

Planning information

Provide sufficient ventilation below the gas hob. Either via the carcass front (opening cross-section > 50 cm²) or via the plinth area - opening cross-section > 150 cm².
Provide a return air opening (opening cross-section > 1000 cm²) per air purification unit) for the return of recirculated air in the plinth area.
Observe the locally applicable regulations and connection conditions for gas hobs.
Observe the special installation and processing guidelines for the PKG3 gas hob (see operating and installation instructions).
When operating the gas hob with a hob extractor, the gas flame may be affected (depending on the level of the power stage on the hob extractor).
The PKG3 gas hob is SVGW-certified (No. 19-027-1). Observe the locally applicable regulations and connection conditions for gas hobs.

Accessory

Optional accessories



> Weblink
40.001.767.00 / CHF 97.-
BORA socket USTJ



> Weblink
40.002.034.00 / CHF 135.-
BORA socket USTJAB All Black



> Weblink
40.001.775.00 / CHF 19.-
BORA Glass ceramic scraper UGS

Other Articles

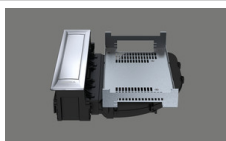
You can find additional articles here [> Weblink](#)



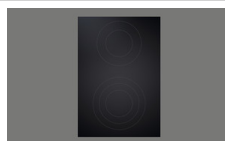
40.002.292.00 / CHF 9632.-
BORA Set PKA3 + PKFI3 + PKT3, Professional 3.0



40.002.294.00 / CHF 7067.-
BORA Set PKA3 + 2x PKCH3, Professional 3.0



40.002.231.00 / CHF 2152.-
BORA hob extractor PKA3, Professional 3.0



40.002.532.00 / CHF 1730.-
HiLight Professional Cooktop All Black



40.002.291.00 / CHF 10341.-
BORA Set PKA3AB + 2x PKFI3 Professional 3.0



40.002.293.00 / CHF 10852.-
BORA Set PKA3AB + PKFI3 + PKT3, Professional 3.0



40.002.295.00 / CHF 8287.-
BORA Set PKA3AB + 2x PKCH3, Professional 3.0



40.002.232.00 / CHF 3006.-
BORA hob extractor PKA3AB All Black, Professional 3.0



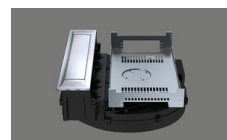
40.002.296.00 / CHF 8377.-
BORA Set PKAS3 + 2x PKFI3 Professional 3.0



40.002.298.00 / CHF 8888.-
BORA Set PKAS3 + PKFI3 + PKT3, Professional 3.0



40.002.300.00 / CHF 6323.-
BORA Set PKAS3 + 2x PKCH3, Professional 3.0



40.002.233.00 / CHF 3229.-
BORA hob extraction system PKAS3, Professional 3.0



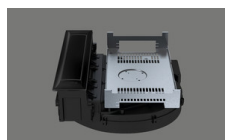
40.002.297.00 / CHF 9597.-
BORA Set PKAS3AB + 2x PKFI3AB Professional 3.0



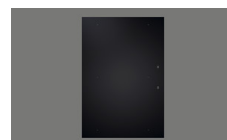
40.002.299.00 / CHF 10108.-
BORA Set PKAS3AB + PKFI3 + PKT3, Professional 3.0



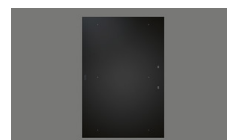
40.002.301.00 / CHF 7543.-
BORA Set PKAS3AB + 2x PKCH3, Professional 3.0



40.002.234.00 / CHF 4083.-
BORA hob extraction system PKAS3AB All Black, Professional 3.0



40.002.239.00 / CHF 2574.-
BORA PKFI3 surface induction glass ceramic hob, Professional 3.0



40.002.535.00 / CHF 2757.-
BORA PKFI3AB surface induction glass ceramic hob, Professional 3.0, All Black

BORA PKG3 gas glass ceramic hob, Professional 3.0
[> Web link](#)


40.002.242.00 / CHF 3085.-
BORA PKT3 Teppan stainless steel grill, Professional 3.0



40.002.539.00 / CHF 3268.-
BORA PKT3AB Teppan stainless steel grill, Professional 3.0, All Black



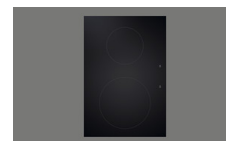
40.002.237.00 / CHF 1547.-
BORA PKCH3 Hyper glass ceramic hob, Professional 3.0



40.002.534.00 / CHF 1730.-
BORA PKCH3AB Hyper glass ceramic hob, Professional 3.0, All Black



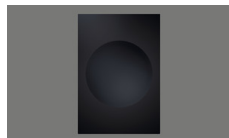
40.002.288.00 / CHF 3973.-
BORA Set PKA3 + ULS, Professional 3.0



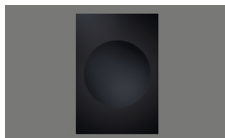
40.002.238.00 / CHF 2238.-
BORA PKI3 induction glass ceramic hob, Professional 3.0



40.002.537.00 / CHF 2421.-
BORA PKI3AB induction glass ceramic hob, Professional 3.0, All Black



40.002.240.00 / CHF 2767.-
BORA PKIW3 Induction Glass Ceramic Wok, Professional 3.0



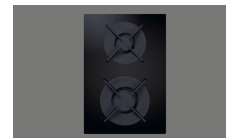
40.002.538.00 / CHF 2950.-
BORA PKIW3AB Induction Glass Ceramic Wok, Professional 3.0, All Black



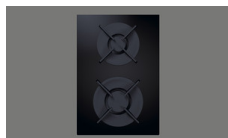
40.002.235.00 / CHF 1547.-
BORA PKC3 HiLight glass ceramic hob, Professional 3.0



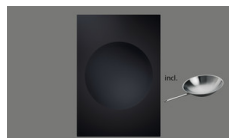
40.002.289.00 / CHF 4827.-
BORA Set PKA3AB + ULS, Professional 3.0



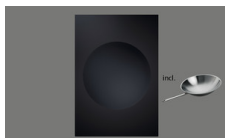
40.002.241.00 / CHF 2771.-
BORA PKG3 gas glass ceramic hob, Professional 3.0



40.002.536.00 / CHF 2954.-
BORA PKG3AB gas glass ceramic hob, Professional 3.0, All Black



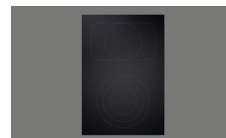
40.002.287.00 / CHF 3367.-
BORA Set PKIW3 + HIW1, Professional 3.0



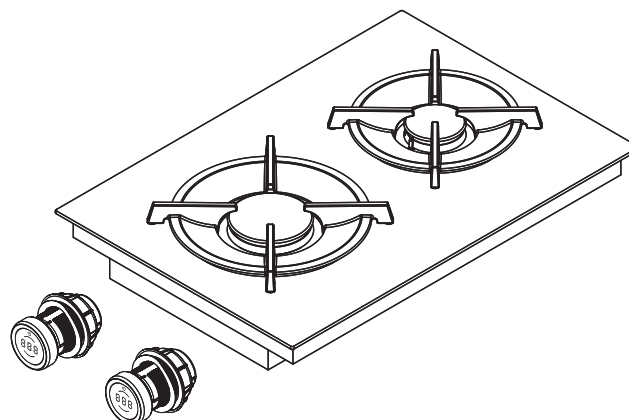
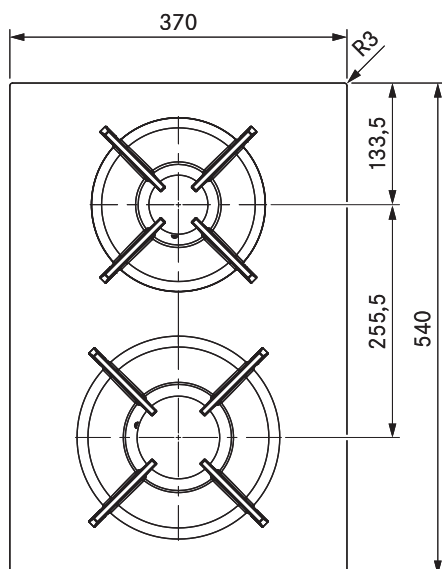
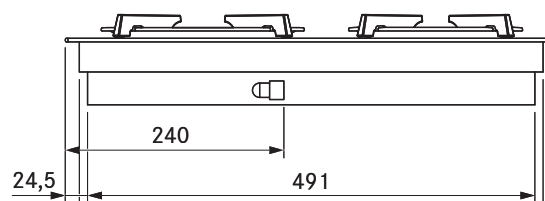
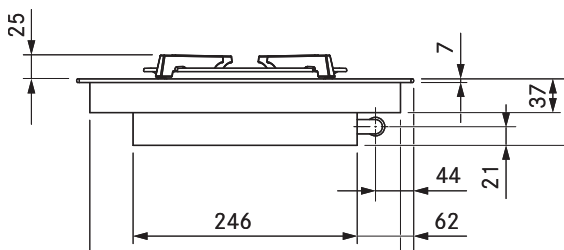
40.002.552.00 / CHF 3550.-
BORA Set PKIW3AB + HIW1, Professional 3.0, All Black



40.002.236.00 / CHF 1583.-
BORA PKCB3 HiLight glass ceramic hob, Professional 3.0



40.002.533.00 / CHF 1766.-
BORA PKCB3AB HiLight glass ceramic hob, Professional 3.0, All Black



Technical data

Supply voltage	220 – 240 V
Frequency	50 / 60 Hz
Maximum power consumption	5.0 kW
Maximum power rating	20 W
Minimum fuse protection	1 x 0.5 A
Power supply cable length	1,5 m
Dimensions (width x depth x height)	370 x 540 x 73 mm
Weight (incl. accessories/packaging)	11.5 kg
Surface material	SCHOTT CERAN®
Cooktop power levels	1 – 9, P
Size of front cooking zone	Ø 240 mm
Size of rear cooking zone	Ø 200 mm
Front cooking zone output (power burner)	850 – 3000 W
Rear cooking zone output (normal burner)	700 – 2000 W
Size of front pan support	270 x 270 x 25 / 50 mm
Size of rear pan support	235 x 235 x 25 / 50 mm

Product description

- Intuitive control knob
- Variable heat retention function
- Sunken gas burners
- Automatic reignition
- Dishwasher-safe pan supports
- Childproofing feature
- automatic heat up function
- precise electronic control
- residual heat display
- Demo mode

Scope of delivery

- Gas cooktop PKG3
- 2 x control knobs
- 2 x connection cables for the control knobs
- 2 x cast iron pan supports
- Gas nozzle set G20/20 mbar natural gas
- Connection cable to the extractor
- operating and installation instructions

- height adjustment plate set
- mounting straps
- Adapter cylindrical-conical
- Seal

Accessories

- BORA gas nozzle set natural gas G20/10 mbar PKGDS2010
- BORA gas nozzle set natural gas G20/13 mbar PKGDS2013
- BORA gas nozzle set natural gas G20/20 mbar PKGDS2020
- BORA gas nozzle set natural gas G25/20 mbar PKGDS2520
- BORA gas nozzle set natural gas G20/25 mbar PKGDS2025
- BORA gas nozzle set natural gas G25/25 mbar PKGDS2525
- BORA gas nozzle set liquid gas G30/G31 28-30/37 mbar PKGDS3028
- BORA gas nozzle set liquid gas G30/G31 50 mbar PKGDS3050
- BORA Pro gas nozzle set liquid gas G31/G30 mbar PKGDS3130
- BORA Pro gas nozzle set liquid gas G31/50 mbar PKGDS3150
- BORA burner set PKGBS
- BORA pan support small PKGTK
- BORA pan support large PKGTG

Product- and planning instructions

- The gas connection tube must be provided at the installation site (thread diameter 1/2" cylindrical)
- Ensure sufficient air supply below the gas cooktop. Either over the front of the body (opening cross-section > 50 cm²) or over the plinth area (opening cross-section > 150 cm²)
- Provide a return flow aperture (opening cross-section > 1000 cm² per air cleaning unit) for recirculation in the plinth area
- Please note the local regulations and connection requirements applicable to gas cooktops
- Please note the special installation and workmanship guidelines for the gas cooktop (see the operating and installation instructions)
- When operating a gas cooktop with a cooktop extractor, the gas flame can be affected (depending on the height of the power level on the cooktop extractor)
- The performance characteristics of the gas cooktop (e.g. heating times, efficiency, etc.) are affected by the cooktop extractor. The cooktop extractor also affects the heat input and distribution
- If the gas cooktop is used in a model with two cooktop extractors, it is to be installed at the side
- Rotation by 180° possible during installation