

BORA Set PKA3 + ULS, Professional 3.0
[> Web link](#)

Brief description

Extraction system

Mode of operation

Recirculated-air or exhaust air

Article no.

40.002.288.00

VRG

5.56

Price CHF

3973.- O excl. VAT

Product description
BORA Professional 3.0 set offer consisting of PKA3 and ULS as well as other components as per scope of delivery

Scope of delivery of set offer «PKA3 and ULS»

- 1 hob extractor PKA3 (40.002.231.00)
- 1 ULS base fan (40.002.251.00)
- 1 Flat silencer USDF (40.002.248.00)
- 1 Ecotube bend 90° flat vertical EFBV90 (40.001.782.00)
- 1 Ecotube transition flat round straight EFRG (40.001.786.00)
- 1 Ecotube transition flat round offset EFRV110 (40.002.051.00)
- 1 Ecotube flat duct EFS375 (40.002.440.00)
- 2 Ecotube flat duct connectors EFV (40.001.788.00)
- incl. gaskets

Planning note: With these units, the duct connection is designed for the BORA Ecotube duct system. To connect BORA Ecotube (connection 245 × 89 mm) with Naber connections (222 × 89 mm), an adapter (EFA, 40.001.779.00) is available / can be ordered separately.
Can be combined with all BORA Professional hobs (can be ordered separately, are not included in the set scope of delivery).

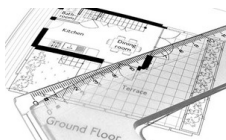
Accessory

Optional accessories


[> Weblink](#)

 40.001.767.00 / CHF 97.-
BORA socket USTJ

[> Weblink](#)

 40.002.034.00 / CHF 135.-
BORA socket USTJAB
All Black

[> Weblink](#)

 80.100.016.00 / CHF 359.-
Ventilation planning

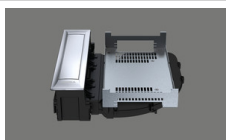
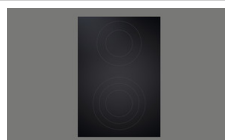
[> Weblink](#)

 80.100.017.00 / CHF 192.-
Revision of the planning

Other Articles

 You can find additional articles here [> Weblink](#)

 40.002.292.00 / CHF 9632.-
BORA Set PKA3 +
PKF13 + PKT3,
Professional 3.0

 40.002.294.00 / CHF 7067.-
BORA Set PKA3 + 2x
PKCH3, Professional 3.0

 40.002.231.00 / CHF 2152.-
BORA hob extractor
PKA3, Professional 3.0

 40.002.532.00 / CHF 1730.-
HiLight Professional
Cooktop All Black

 40.002.291.00 / CHF 10341.-
BORA Set PKA3AB + 2 x
PKF13 Professional 3.0

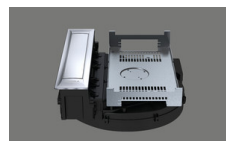
 40.002.293.00 / CHF 10852.-
BORA Set PKA3AB +
PKF13 + PKT3,
Professional 3.0

 40.002.295.00 / CHF 8287.-
BORA Set PKA3AB + 2x
PKCH3, Professional 3.0

 40.002.232.00 / CHF 3006.-
BORA hob extractor
PKA3AB All Black,
Professional 3.0

 40.002.296.00 / CHF 8377.-
BORA Set PKAS3 + 2x
PKF13 Professional 3.0

 40.002.298.00 / CHF 8888.-
BORA Set PKAS3 +
PKF13 + PKT3,
Professional 3.0

 40.002.300.00 / CHF 6323.-
BORA Set PKAS3 + 2x
PKCH3, Professional 3.0

 40.002.233.00 / CHF 3229.-
BORA hob extraction
system PKAS3,
Professional 3.0

BORA Set PKA3 + ULS, Professional 3.0
[> Web link](#)


40.002.297.00 / CHF 9597.-
BORA Set PKAS3AB +
2x PKFI3AB Professional
3.0



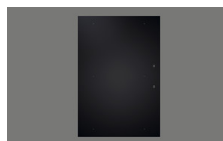
40.002.299.00 / CHF 10108.-
BORA Set PKAS3AB +
PKFI3 + PKT3,
Professional 3.0



40.002.301.00 / CHF 7543.-
BORA Set PKAS3AB +
2x PKCH3, Professional
3.0



40.002.234.00 / CHF 4083.-
BORA hob extraction
system PKAS3AB All
Black, Professional 3.0



40.002.239.00 / CHF 2574.-
BORA PKFI3 surface
induction glass ceramic
hob, Professional 3.0



40.002.535.00 / CHF 2757.-
BORA PKFI3AB surface
induction glass ceramic
hob, Professional 3.0, All
Black



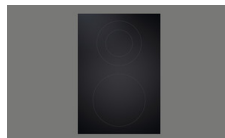
40.002.242.00 / CHF 3085.-
BORA PKT3 Teppan
stainless steel grill,
Professional 3.0



40.002.539.00 / CHF 3268.-
BORA PKT3AB Teppan
stainless steel grill,
Professional 3.0, All
Black



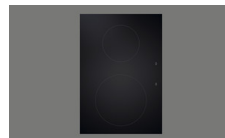
40.002.237.00 / CHF 1547.-
BORA PKCH3 Hyper
glass ceramic hob,
Professional 3.0



40.002.534.00 / CHF 1730.-
BORA PKCH3AB Hyper
glass ceramic hob,
Professional 3.0, All
Black



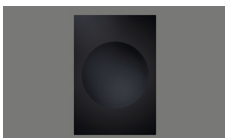
40.002.288.00 / CHF 3973.-
BORA Set PKA3 + ULS,
Professional 3.0



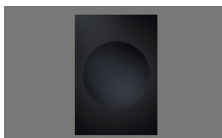
40.002.238.00 / CHF 2238.-
BORA PKI3 induction
glass ceramic hob,
Professional 3.0



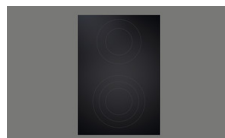
40.002.537.00 / CHF 2421.-
BORA PKI3AB induction
glass ceramic hob,
Professional 3.0, All
Black



40.002.240.00 / CHF 2767.-
BORA PKIW3 Induction
Glass Ceramic Wok,
Professional 3.0



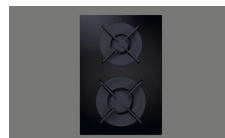
40.002.538.00 / CHF 2950.-
BORA PKIW3AB
Induction Glass Ceramic
Wok, Professional 3.0,
All Black



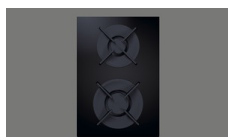
40.002.235.00 / CHF 1547.-
BORA PKC3 HiLight
glass ceramic hob,
Professional 3.0



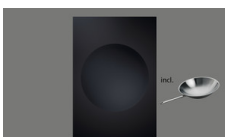
40.002.289.00 / CHF 4827.-
BORA Set PKA3AB +
ULS, Professional 3.0



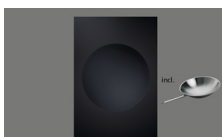
40.002.241.00 / CHF 2771.-
BORA PKG3 gas glass
ceramic hob,
Professional 3.0



40.002.536.00 / CHF 2954.-
BORA PKG3AB gas
glass ceramic hob,
Professional 3.0, All
Black



40.002.287.00 / CHF 3367.-
BORA Set PKIW3 +
HIW1, Professional 3.0



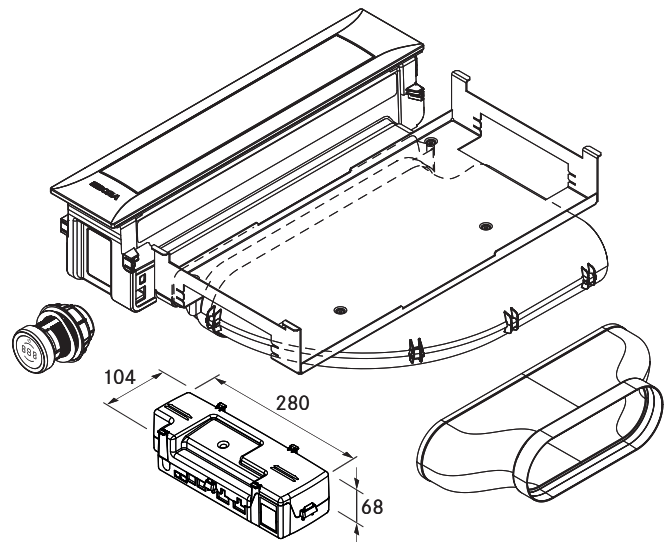
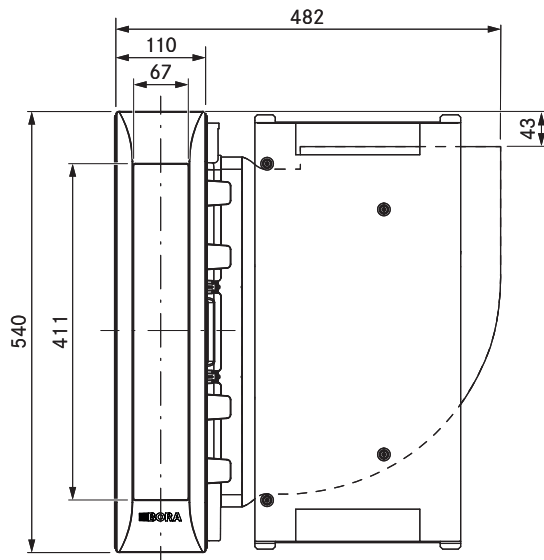
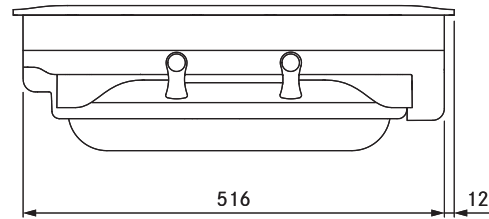
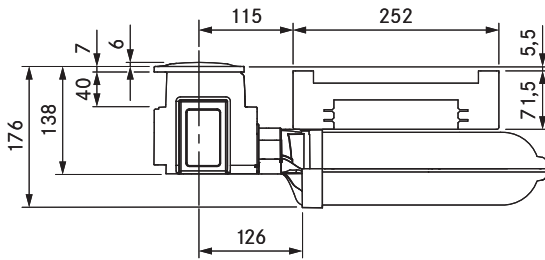
40.002.552.00 / CHF 3550.-
BORA Set PKIW3AB +
HIW1, Professional 3.0,
All Black



40.002.236.00 / CHF 1583.-
BORA PKCB3 HiLight
glass ceramic hob,
Professional 3.0



40.002.533.00 / CHF 1766.-
BORA PKCB3AB HiLight
glass ceramic hob,
Professional 3.0, All
Black



technical data

Supply voltage	220 – 240 V
Frequency	50/60 Hz
Maximum power consumption	550 W
Power supply cable length	2 m
Dimensions (width x depth x height)	482 x 540 x 176 mm
Weight (incl. accessories/packaging)	9.25 kg
Cooktop extractor power levels	1 – 9, P
duct connection	BORA Ecotube

Product description

- Intuitive control knob
- Automatic cover flap
- Premium design
- Minimum volume
- Simple cleaning
- Integrated grease drip pan
- Genuine stainless steel grease filter
- Modular system
- Automatic extractor control
- Demo mode

Scope of delivery

- Cooktop extractor PKA3 with integrated 90° bend
- Straight duct element
- Control knob
- cover flap
- stainless steel grease filter
- Filter tray
- Maintenance tray
- CAT 5 communication cable
- Universal control unit
- connection cable for the control knob
- operating and installation instructions
- height adjustment plate set
- Mounting clamps
- Power supply cable with type E + F plugs
- Ecotube seal flat EFD

Accessories

- PKA1FF stainless steel grease filter
- PKA1VK cover flap
- PKA1FW filter tray
- UNLI type I power supply cable (AUS)
- UNLJ type J power supply cable (CH)
- UNLG type G power supply cable (GB-IE)
- UNLB type B power supply cable (PH)
- UNLH type H power supply cable (IL)

product- and planning instructions

- Suitable for use as a recirculation or exhaust system
- Compatible with all BORA Professional 3.0 cooktops and BORA Universal fan modules
- Use of an additional fan module is possible for very long or complex exhaust air channels
- The worktop height can be adjusted as necessary
- Worktop depth: ≥ 700 mm (in conjunction with the straight duct element ≥ 650 mm)
- Airflow possible to the right or left
- Fan can be positioned in the plinth area as a result of the low installation height (100 mm) (when using the ULS plinth fan only)
- Installation type: flush or surface-mounted
- Universal control unit as central connection point can be simply and compactly positioned in the plinth area
- The extractor and Universal control unit are connected by a CAT 5 communication cable
- The drawers and/or shelves in the floor unit must be removable for maintenance and cleaning purposes
- The BORA Ecotube duct system is optimally tailored to the BORA cooktop extractors and guarantees 100% functionality and optimum performance
- The Professional cooktop extractor system can be combined with all BORA sockets