

**BORA Set PKA3AB + ULS, Professional 3.0**
[> Web link](#)

**Brief description**

Extraction system

**Mode of operation**

Recirculated-air or exhaust air

**Article no.**

40.002.289.00

**VRG**

5.56

**Price CHF**

4827.- O excl. VAT

**Product description**

**BORA Professional 3.0 set offer consisting of PKA3AB All Black and ULS** as well as other components as per scope of delivery

**Scope of delivery of set offer «PKA3AB and ULS» All Black**

1 hob extractor PKA3AB All Black (40.002.232.00)

1 ULS base fan (40.002.251.00)

1 flat silencer USDF (40.002.248.00)

1 Ecotube bend 90° flat vertical EFBV90

1 Ecotube transition flat round straight EFRG

1 Ecotube transition flat round offset EFRV110

1 Ecotube flat duct EFS375

2 Ecotube flat duct connector EFV

incl. gaskets

Planning note: With these units, the duct connection is designed for the BORA Ecotube duct system. To connect BORA Ecotube (connection 245 x 89 mm) with Naber connections (222 x 89 mm), an adapter (EFA, 40.001.779.00) is available / can be ordered separately.

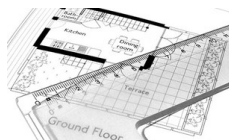
Can be combined with all BORA Professional 3.0 hobs (can be ordered separately, are not included in the set scope of delivery).

**Accessory**
**Optional accessories**

[> Weblink](#)

40.002.034.00 / CHF

135.-

 BORA socket USTJAB  
All Black

[> Weblink](#)

80.100.016.00 / CHF

359.-

Ventilation planning


[> Weblink](#)

80.100.017.00 / CHF

192.-

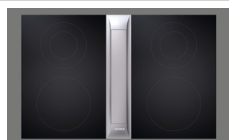
Revision of the planning

**Other Articles**

 You can find additional articles here [> Weblink](#)

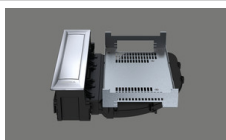

40.002.292.00 / CHF

9632.-

 BORA Set PKA3 +  
PKF13 + PKT3,  
Professional 3.0


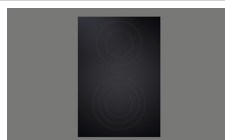
40.002.294.00 / CHF

7067.-

 BORA Set PKA3 + 2x  
PKCH3, Professional 3.0


40.002.231.00 / CHF

2152.-

 BORA hob extractor  
PKA3, Professional 3.0


40.002.532.00 / CHF

1730.-

 HiLight Professional  
Cooktop All Black

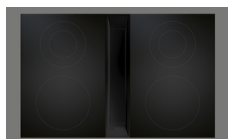

40.002.291.00 / CHF

10341.-

 BORA Set PKA3AB + 2 x  
PKF13 Professional 3.0


40.002.293.00 / CHF

10852.-

 BORA Set PKA3AB +  
PKF13 + PKT3,  
Professional 3.0


40.002.295.00 / CHF

8287.-

 BORA Set PKA3AB + 2x  
PKCH3, Professional 3.0


40.002.232.00 / CHF

3006.-

 BORA hob extractor  
PKA3AB All Black,  
Professional 3.0


40.002.296.00 / CHF

8377.-

 BORA Set PKAS3 + 2x  
PKF13 Professional 3.0

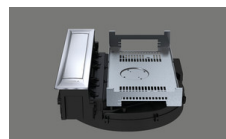

40.002.298.00 / CHF

8888.-

 BORA Set PKAS3 +  
PKF13 + PKT3,  
Professional 3.0


40.002.300.00 / CHF

6323.-

 BORA Set PKAS3 + 2x  
PKCH3, Professional 3.0


40.002.233.00 / CHF

3229.-

 BORA hob extraction  
system PKAS3,  
Professional 3.0

**BORA Set PKA3AB + ULS, Professional 3.0**
[> Web link](#)

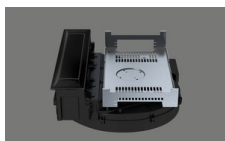

40.002.297.00 / CHF  
9597.-  
BORA Set PKA3AB +  
2x PKFI3AB Professional  
3.0



40.002.299.00 / CHF  
10108.-  
BORA Set PKA3AB +  
PKFI3 + PKT3,  
Professional 3.0



40.002.301.00 / CHF  
7543.-  
BORA Set PKA3AB +  
2x PKCH3, Professional  
3.0



40.002.234.00 / CHF  
4083.-  
BORA hob extraction  
system PKA3AB All  
Black, Professional 3.0



40.002.239.00 / CHF  
2574.-  
BORA PKFI3 surface  
induction glass ceramic  
hob, Professional 3.0



40.002.535.00 / CHF  
2757.-  
BORA PKFI3AB surface  
induction glass ceramic  
hob, Professional 3.0, All  
Black



40.002.242.00 / CHF  
3085.-  
BORA PKT3 Teppan  
stainless steel grill,  
Professional 3.0



40.002.539.00 / CHF  
3268.-  
BORA PKT3AB Teppan  
stainless steel grill,  
Professional 3.0, All  
Black



40.002.237.00 / CHF  
1547.-  
BORA PKCH3 Hyper  
glass ceramic hob,  
Professional 3.0



40.002.534.00 / CHF  
1730.-  
BORA PKCH3AB Hyper  
glass ceramic hob,  
Professional 3.0, All  
Black



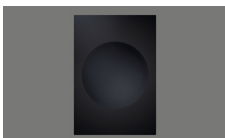
40.002.288.00 / CHF  
3973.-  
BORA Set PKA3 + ULS,  
Professional 3.0



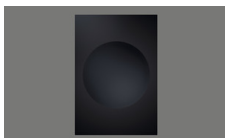
40.002.238.00 / CHF  
2238.-  
BORA PKI3 induction  
glass ceramic hob,  
Professional 3.0



40.002.537.00 / CHF  
2421.-  
BORA PKI3AB induction  
glass ceramic hob,  
Professional 3.0, All  
Black



40.002.240.00 / CHF  
2767.-  
BORA PKIW3 Induction  
Glass Ceramic Wok,  
Professional 3.0



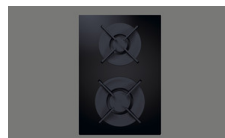
40.002.538.00 / CHF  
2950.-  
BORA PKIW3AB  
Induction Glass Ceramic  
Wok, Professional 3.0,  
All Black



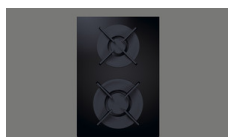
40.002.235.00 / CHF  
1547.-  
BORA PKC3 HiLight  
glass ceramic hob,  
Professional 3.0



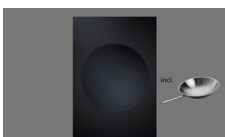
40.002.289.00 / CHF  
4827.-  
BORA Set PKA3AB +  
ULS, Professional 3.0



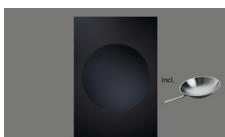
40.002.241.00 / CHF  
2771.-  
BORA PKG3 gas glass  
ceramic hob,  
Professional 3.0



40.002.536.00 / CHF  
2954.-  
BORA PKG3AB gas  
glass ceramic hob,  
Professional 3.0, All  
Black



40.002.287.00 / CHF  
3367.-  
BORA Set PKIW3 +  
HIW1, Professional 3.0



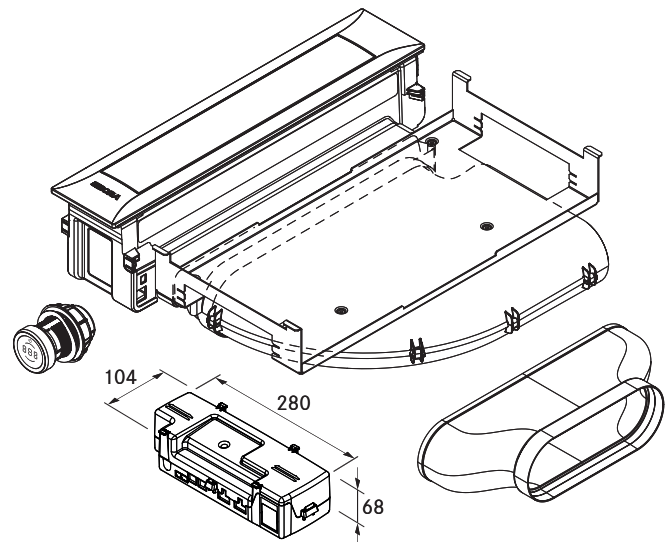
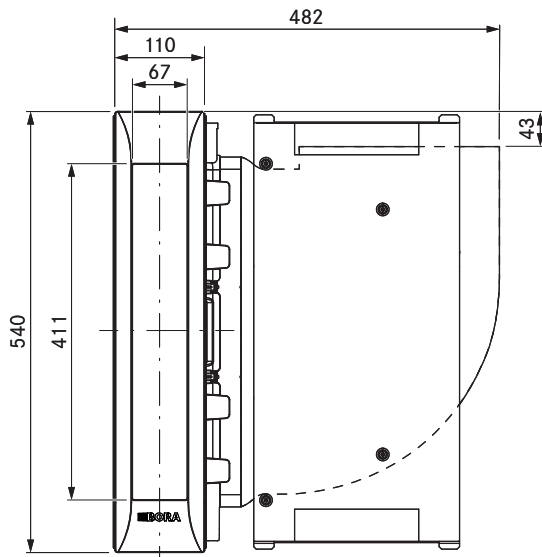
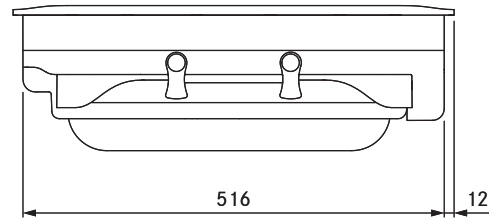
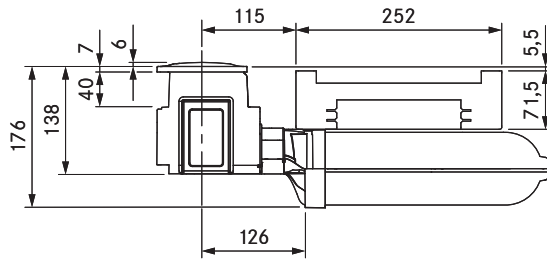
40.002.552.00 / CHF  
3550.-  
BORA Set PKIW3AB +  
HIW1, Professional 3.0,  
All Black



40.002.236.00 / CHF  
1583.-  
BORA PKCB3 HiLight  
glass ceramic hob,  
Professional 3.0



40.002.533.00 / CHF  
1766.-  
BORA PKCB3AB HiLight  
glass ceramic hob,  
Professional 3.0, All  
Black



## technical data

Supply voltage	220 – 240 V
Frequency	50/60 Hz
Maximum power consumption	550 W
Power supply cable length	2 m
Dimensions (width x depth x height)	482 x 540 x 176 mm
Weight (incl. accessories/packaging)	9.25 kg
Cooktop extractor power levels	1 – 9, P
duct connection	BORA Ecotube

## Product description

- Intuitive control knob
- DLC (diamond-like-carbon) coated
- Automatic cover flap
- Premium design
- Minimum volume
- Simple cleaning
- Integrated grease drip pan
- Genuine stainless steel grease filter
- Modular system
- Automatic extractor control

## Scope of delivery

- Cooktop extractor PKA3AB with integrated 90° bend
- Straight duct element
- Control knob
- 4 x Pro knob ring All Black PKR3AB
- cover flap
- stainless steel grease filter
- Filter tray
- Maintenance tray
- CAT 5 communication cable
- Universal control unit
- connection cable for the control knob
- operating and installation instructions
- height adjustment plate set
- Mounting clamps
- Power supply cable with type E + F plugs
- Ecotube seal flat EFD

## Accessories

- PKA1FF stainless steel grease filter
- PKA1VKAB cover flap
- PKA1FW filter tray
- UNLI type I power supply cable (AUS)
- UNLJ type J power supply cable (CH)
- UNLG type G power supply cable (GB-IE)
- UNLB type B power supply cable (PH)
- UNLH type H power supply cable (IL)

## product- and planning instructions

- Suitable for use as a recirculation or exhaust system
- Compatible with all BORA Professional 3.0 cooktops and BORA Universal fan modules
- In addition, four knob ring All Black are included for the adjacent cooktops
- Use of an additional fan module is possible for very long or complex exhaust air channels
- The worktop height can be adjusted as necessary
- Worktop depth:  $\geq 700$  mm (in conjunction with the straight duct element  $\geq 650$  mm)
- Airflow possible to the right or left
- Fan can be positioned in the plinth area as a result of the low installation height (100 mm) (when using the ULS plinth fan only)
- Installation type: flush or surface-mounted
- Universal control unit as central connection point can be simply and compactly positioned in the plinth area
- The extractor and Universal control unit are connected by a CAT 5 communication cable
- The drawers and/or shelves in the floor unit must be removable for maintenance and cleaning purposes
- The BORA Ecotube duct system is optimally tailored to the BORA cooktop extractors and guarantees 100% functionality and optimum performance
- The Professional cooktop extractor system can be combined with all BORA sockets