

BORA ULS base fan

[> Web link](#)


Kurzbeschreibung
Lüfterbaustein für Abluftbetrieb

Betriebsart
Abluftbetrieb

Article no.
40.002.251.00

VRG
0.56

Price CHF
1453.- O excl. VAT

Product description

Technical data

Supply voltage: 230 V
Frequency: 50 Hz
Power consumption: 170 W
Maximum current consumption: 1.4 A
Maximum ambient temperature: 40 °C
Maximum flow rate: 750 m³ / h
Maximum static pressure: 587 Pa
Weight (incl. packaging): 2.85 kg
Dimensions (width x depth x height): 370 x 388 x 100 mm
Material of housing: Plastic
Connection cable: 0.6 m
Connection on exhaust side: BORA Ecotube, 245 x 89 mm

Product description

for horizontal installation in the plinth area, in the floor structure or suspended from the cellar ceiling
highest energy efficiency class and low energy consumption (EC technology)
integrated fixing points for ceiling mounting
Sound and vibration decoupling
removable inlet spigot for plinth heights of 100 mm and more
The fan is designed for use with the BORA hob extractors PKA3 and CKA2
In the case of an exhaust air path longer than 6 m or high pressure losses, the plinth fan must be supplemented with another BORA fan module.

Scope of delivery

BORA plinth fan ULS
Installation instructions

Planning information

For suspended installation, a drill hole diameter of Ø 180 mm must be provided for the ceiling opening.
With these units, the duct connection is designed for the BORA Ecotube duct system. To connect BORA Ecotube (connection 245 x 89 mm) with Naber connections (222 x 89 mm), an adapter (EFA, 40.001.779) is available / can be ordered separately.

Accessory

Optional accessories



[> Weblink](#)
40.001.599.00 / CHF 75.-
BORA mains cable EC
10 m



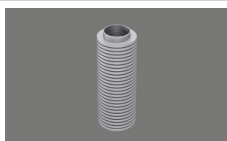
[> Weblink](#)
40.001.600.00 / CHF 62.-
BORA control line EC 10
m

Other Articles

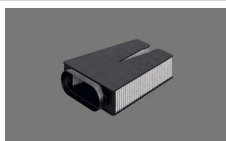
You can find additional articles here [> Weblink](#)



40.002.248.00 / CHF
241.-
BORA shallow silencer
USDF



40.001.774.00 / CHF
131.-
BORA round silencer
USDR50



/ CHF 2173.-
BORA Lüfterbausteine