

## BORA Basic BHA

[> Web link](#)

**Article no.**  
40.001.759.00

**VRG**  
10.00  
**Price CHF**  
2997.- O excl. VAT

## Product description

## BORA Hyper cooktop with integrated cooktop extractor (Exhaust air) BHA

## Technical data

## Supply voltage

380 - 415 V 2N / 3N  
220 - 240 V

## Frequency

50 Hz

## Max. power consumption

7.0 kW

## Fuse / mains supply

3 x 16 A  
2 x 16 A

## Dimensions (excluding duct connections)

760 x 515 x 196 mm

## Weight (including accessories/package)

25 kg

## Surface material

SCHOTT CERAN® SURFACE MATERIAL

## Cooktop

1-burner cooking zone Hyper front left

2300 W ø 210 mm

Power level

3000 W

Cooking zone 1 radiant hob rear left

1200 W ø 140 mm

Cooking zone 1 radiant heater front right

2300 W ø 210 mm

Cooking zone 1 rear radiant heater right

1200 W ø 140 mm

Power setting

1 - 9, P

## Extraction system

## Max. free air volume

647 m³/h

## Maximum static pressure

339 Pa

## Power setting

1, 2, power level

## Connection on discharge side

BORA Ecotube 245 x 89 mm

## Product description

## Cooktop

Power level for front left cooking zone (Hyper cooking zone)

Automatic switch-off

Timer function

Residual heat indicator

Automatic cooking start

Keep warm function

Child lock

## Vacuum system

Power control by touch control

Timed shut-off

Automatic switch-off

Filter maintenance indicator

Connection cable supplied by customer

Mains socket at the front

## BORA Basic BHA

[> Web link](#)

Length of exhaust air path max. 6 m

### Scope of delivery

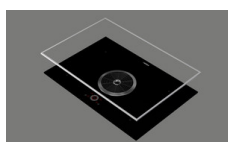
Hyper glass ceramic cooktop with BHA cooktop extractor  
 Air inlet nozzle BFIED  
 Stainless steel grease filter  
 BLAVH horizontal exhaust air extension  
 Mounting straps  
 Sealing tape  
 Cable routing clips  
 Height adjustment plate set  
 Operating and installation instructions

**Planning tip:** The duct connection on this unit has been adapted for the BORA Ecotube duct system. To connect the BORA Ecotube (245 x 89 mm) to the Naber connection (222 x 89 mm), an adapter (EFA, 40.001.779.00) is available / to be ordered separately.

## Accessory

You can find the complete range of accessories here [> Weblink](#)

Optional accessories



[> Weblink](#)  
 40.001.705.00 / CHF  
 248.-  
 BORA cooktop frame  
 BKR760



[> Weblink](#)  
 40.001.767.00 / CHF 97.-  
 BORA socket USTJ



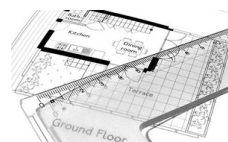
[> Weblink](#)  
 40.002.034.00 / CHF  
 135.-  
 BORA socket USTJAB  
 All Black



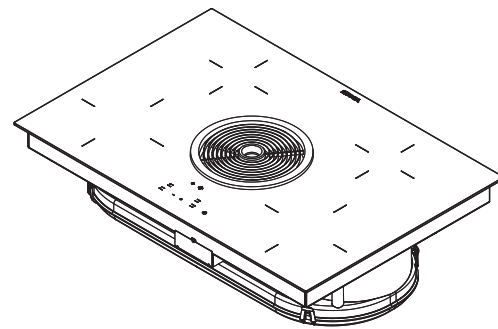
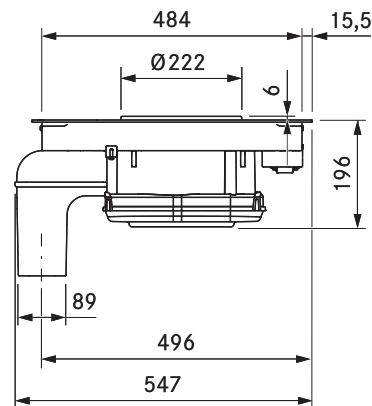
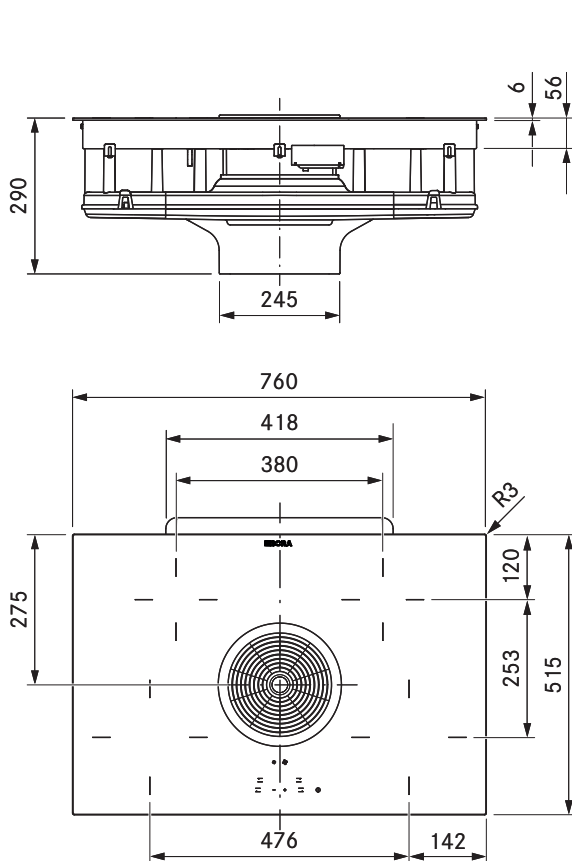
[> Weblink](#)  
 40.002.820.00 / CHF  
 195.-  
 Umrüstset Umluft GP4TU



[> Weblink](#)  
 40.001.775.00 / CHF 19.-  
 BORA Glass ceramic  
 scraper UGS



[> Weblink](#)  
 80.100.016.00 / CHF  
 359.-  
 Ventilation planning

**technical data**

Multiphase supply voltage	380 - 415 V 2N/3N
Single-phase supply voltage	220 - 240 V
Frequency	50 Hz
Maximum power consumption	7.0 kW
Three-phase power supply/fuse protection	3 x 16 A (standard connection)
Two-phase power supply/fuse protection	2 x 16 A
Single-phase power supply/fuse protection	1 x 32 A
Dimensions (WxDxH)	760 x 515 x 196 mm
Weight (incl. accessories/packaging)	25 kg
Surface material	Glass ceramic
Cooktop extractor power levels	1, 2, P
Cooktop power levels	1 - 9, P
duct connection	BORA Ecotube
Size of front cooking zone	Ø 210 mm
Size of rear cooking zone	Ø 140 mm
Front cooking zone output	2300 W
Rear cooking zone output	1200 W
Front cooking zone power setting output	3000 W

**Product description**

- Minimum volume
- Super fast parboiling
- Simple cleaning
- Genuine stainless steel grease filter
- Oversized 4 24 cooking surface
- Compact size
- Free choice of cooktop
- automatic heat up function
- childproofing feature
- Cooking zone timers

**Scope of delivery**

- Hyper glass ceramic cooktop with BHA cooktop extractor
- air inlet nozzle
- stainless steel grease filter
- BLAVH horizontal exhaust air extension
- mounting straps
- sealing tape
- glass ceramic scraper
- cable routing clips
- height adjustment plate set
- operating and installation instructions

**Accessories**

- BFF stainless steel grease filter
- BFIED air inlet nozzle
- BUSU recirculation conversion set
- UDB25 sealing tape
- BKR760 cooktop frame
- BLAVH1 exhaust air duct extension

**product- and planning instructions**

- The connection cable must be provided at the installation site
- Front power socket
- Max. exhaust channel length: 6 m
- The Basic cooktop extractor system can be combined with all BORA sockets