

BORA Basic BHU

[> Web link](#)

Article no.
40.001.511.00

VRG
10.00
Price CHF
2997.- O excl. VAT

Product description

BORA Hyper cooktop with integrated cooktop extractor (Recirculation) BHU

Technical data

Supply voltage

380 - 415 V 2N / 3N
220 - 240 V

Frequency

50 Hz

Max. power consumption

7.0 kW

Fuse / mains supply

3 x 16 A, 2 x 16 A, 1 x 32 A

Dimensions (excluding duct connections)

760 x 515 x 196 mm

Weight (including accessories/packaging)

25 kg

Surface material

SCHOTT CERAN® SURFACE MATERIAL

Hob

Cooking zone Hyper 1 radiant hob front left
2300 W ø 210 mm

Power level

3000 W

Cooking zone 1 radiant hob rear left

1200 W ø 140 mm

Cooking zone 1 radiant heater front right

2300 W ø 210 mm

Cooking zone 1 rear radiant heater right

1200 W ø 140 mm

Power setting

1 - 9

Extraction system

Maximum air volume

624 m³/h

Maximum static pressure

341 Pa

Power setting

1, 2, power level

Recirculation connection

650 x 90 mm

Air circulation filter

Filter media

Activated carbon with ion exchange

Material

Filter panel with fine filter

Filter surface

2 x 0.4 m²

Service life

max. 150 h, 1 year

Please provide good ventilation under the hob.

Scope of delivery:

Hyper glass ceramic cooktop with BHU cooktop extractor

Air inlet nozzle GP4ED

Stainless steel grease filter

BORA Basic BHU

[> Web link](#)

BAKFS activated charcoal filter
Flexible duct with fixing screws
Mounting straps
Sealing tape
Cable routing clips
Height adjustment plate set
Operating and installation instructions

Product description:

Cooktop:

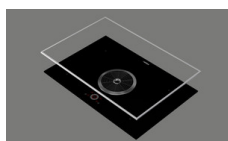
Hyper level
Automatic switch-off
Timer function
Residual heat indicator
Automatic cooking start
Keep warm function
Child lock

Vacuum system:

Power adjustment via touch control
Timed shut-off (10 min)
Automatic switch-off
Filter maintenance indicator
Connection cable supplied by customer
Mains socket at the front

Accessory

Optional accessories



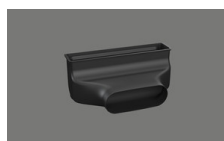
> Weblink
40.001.705.00 / CHF
248.-
BORA cooktop frame
BKR760



> Weblink
40.001.767.00 / CHF 97.-
BORA socket USTJ



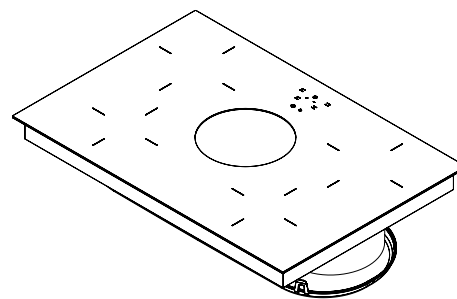
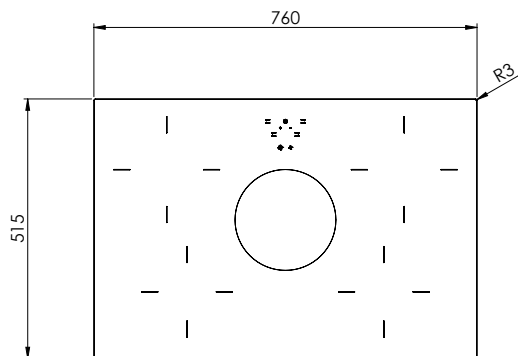
> Weblink
40.002.034.00 / CHF
135.-
BORA socket USTJAB
All Black



> Weblink
40.001.794.00 / CHF
187.-
Change kit BUSAE with
BORA Ecotube
connection

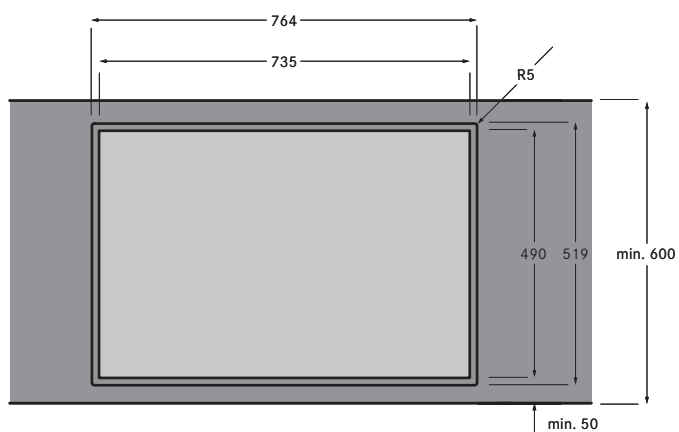
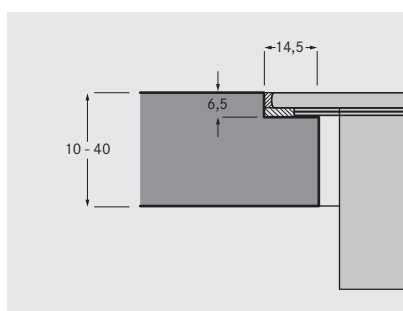


> Weblink
40.001.775.00 / CHF 19.-
BORA Glass ceramic
scraper UGS

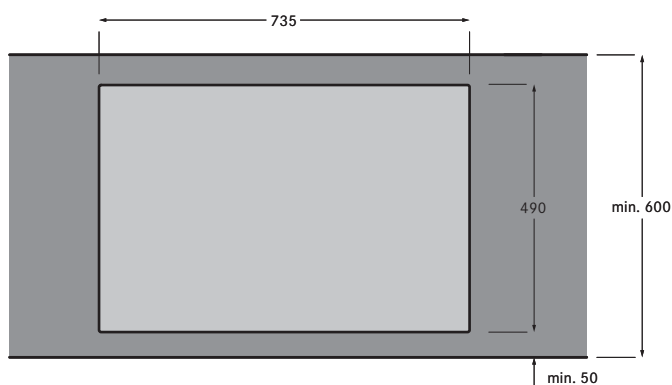
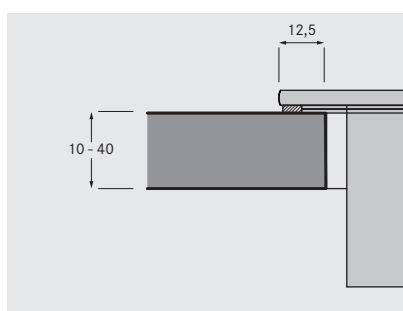


BORA Basic BIA/BHA/BIU/BHU: flush installation and surface mounting

Flush installation



Surface mounting



With regard to the suitability of the worktop, the instructions from the worktop manufacture must be adhered to. For example, worktop cut-outs must be appropriately sealed against moisture.