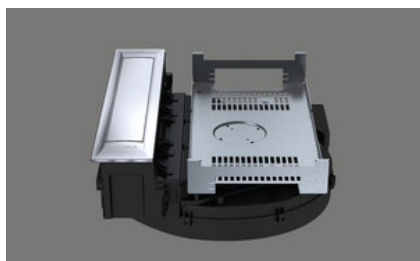


**BORA hob extraction system PKAS3, Professional 3.0**
[> Web link](#)


**Article no.**  
40.002.233.00

**VRG**  
2.31  
**Price CHF**  
3229.- O excl. VAT

**Product description**
**Product description BORA Professional 3.0 hob extraction system PKAS3**

The PKAS3 is a compact system in which the fan motor and hob extractor form a single unit.

Power control via control knob

Power level indicator

Electric shutter

Shutter sensor

Stainless steel grease filter

Grease filter sensor

Automatic hob extractor

Automatic run-on

Filter service indicator

Interface for external devices

Safety shut-off

Connection option for an additional BORA fan module

**Technical data**

Supply voltage

220 - 240 V

Frequency

50 Hz

Maximum power consumption

550 W

Weight (incl. accessories and packaging)

12.5 kg

Dimensions (width x depth x height)

468 x 540 x 199 mm

Power levels

1-9, P

Exhaust air connection

BORA Ecotube 245 x 89 mm

**Scope of delivery**

PKAS3 hob extraction system incl. fan motor

Operating and installation instructions

Height compensation plate set

Mounting clamps

Control knob

Stainless steel grease filter

Filter tray

Maintenance tray

Closing flap

Cable control knob - interface/extractor

Mains cable 1 m with plug type 12, 10 A

**Planning information**

Possible as recirculation or exhaust air system

Can be combined with all BORA Professional hobs and BORA Universal fan modules

Worktop height can be individually adjusted

Worktop depth:  $\geq 700$

Type of installation: flush-mounted or top unit

The drawers or shelves in the base unit must be removable for maintenance and cleaning purposes.

The BORA Ecotube duct system is optimally matched to the BORA hob extractors and guarantees 100% function and best performance. An additional universal fan module must be used if the exhaust air path is longer than 6 m or if there are high pressure losses.

Exhaust air routing only possible to the right

**Planning note:** With these units, the duct connection is designed for the BORA Ecotube duct system. To connect BORA Ecotube (connection 245 x 89 mm) with Naber connections (222 x 89 mm), an adapter (EFA, 40.001.779.00) is available / can be ordered separately.

## BORA hob extraction system PKAS3, Professional 3.0

[> Web link](#)

## Accessory

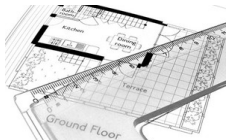
## Optional accessories



> Weblink  
40.001.767.00 / CHF 97.-  
BORA socket USTJ



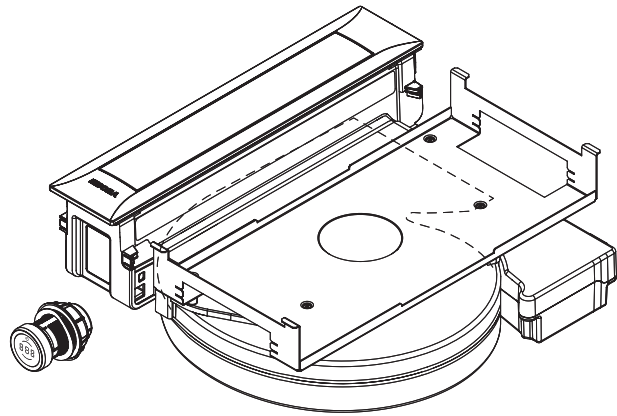
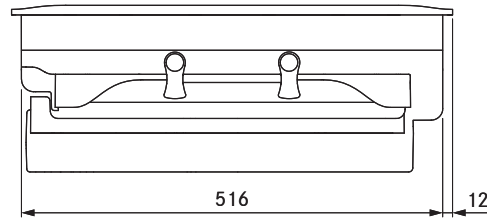
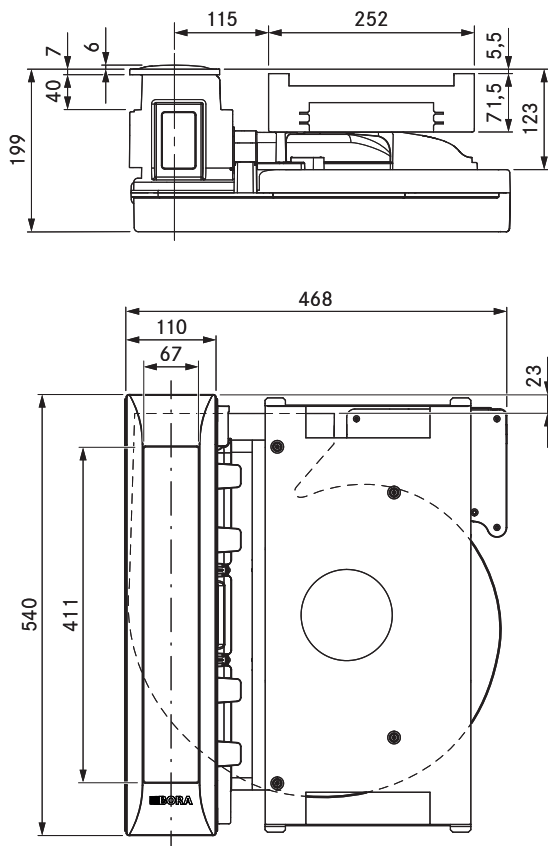
> Weblink  
40.002.034.00 / CHF  
135.-  
BORA socket USTJAB  
All Black



> Weblink  
80.100.016.00 / CHF  
359.-  
Ventilation planning



> Weblink  
80.100.017.00 / CHF  
192.-  
Revision of the planning



## technical data

Supply voltage	220 – 240 V
Frequency	50/60 Hz
Maximum power consumption	550 W
Power supply cable length	2 m
Dimensions (width x depth x height)	468 x 540 x 199 mm
Weight (incl. accessories/packaging)	12.5 kg
Cooktop extractor power levels	1 – 9, P
duct connection	BORA Ecotube

## Product description

- Intuitive control knob
- Automatic cover flap
- Premium design
- Simple cleaning
- Integrated grease drip pan
- Genuine stainless steel grease filter
- Modular system
- Automatic extractor control
- Maximum storage space
- Integrated fan

## Scope of delivery

- Cooktop extractor system with integrated fan PKAS3
- Control knob
- stainless steel grease filter
- Filter tray
- Maintenance tray
- cover flap
- connection cable for the control knob
- operating and installation instructions
- height adjustment plate set
- Mounting clamps
- Power supply cable with type E + F plugs

## Accessories

- PKA1FF stainless steel grease filter
- PKA1VK cover flap
- PKA1FW filter tray
- UNLI type I power supply cable (AUS)
- UNLJ type J power supply cable (CH)
- UNLG type G power supply cable (GB-IE)
- UNLB type B power supply cable (PH)
- UNLH type H power supply cable (IL)

## product- and planning instructions

- Suitable for use as a recirculation or exhaust system
- Compatible with all BORA Professional 3.0 cooktops and BORA Universal fan modules
- Use of an additional fan module is possible for very long or complex exhaust air channels
- The worktop height can be adjusted as necessary
- Worktop depth:  $\geq 700$  mm
- Installation type: flush or surface-mounted
- The drawers and/or shelves in the floor unit must be removable for maintenance and cleaning purposes
- The BORA Ecotube duct system is optimally tailored to the BORA cooktop extractors and guarantees 100% functionality and optimum performance
- The Professional cooktop extractor system can be combined with all BORA sockets
- Duct connection on the back of the appliance