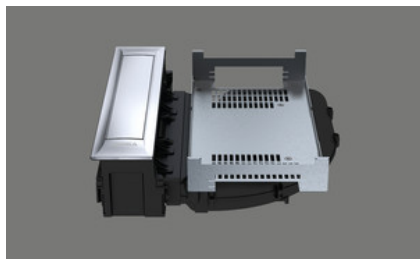


BORA hob extractor PKA3, Professional 3.0[> Web link](#)

Article no.
40.002.231.00

VRG
2.31
Price CHF
2152.- O excl. VAT

Product description**Product description BORA Professional 3.0 hob extractor PKA3**

Power control via control knob
Power level display
Electric shutter
Shutter sensor
Stainless steel grease filter
Grease filter sensor
Automatic hob extractor
Automatic run-on
Filter service indicator
Interface for external devices
Safety switch-off
Connection option for two
BORA universal fan modules

Technical data

Supply voltage
220 - 240 V
Frequency
50 Hz
Maximum power consumption
550 W
Weight (incl. accessories and packaging)
9.25 kg
Dimensions (width x depth x height)
482 x 540 x 176 mm
Power levels
1-9, P
Exhaust air connection
BORA Ecotube 245 x 89 mm

Scope of delivery

Hob extractor PKA3
Operating and assembly instructions
Height compensation plate set
Mounting clamps
Control knob
Stainless steel grease filter
Filter tray
Maintenance tray
Closing flap
Communication cable CAT 5
Universal control unit
Mains cable 1 m with plug type 12, 10 A
Cable control knob - interface / fume cupboard
Duct piece straight and duct piece bend

Planning information

Possible as recirculation or exhaust air system
Can be combined with all BORA Professional hobs and BORA Universal fan modules
Worktop height can be individually adjusted
Worktop depth: ≥ 700 (in combination with the straight duct piece ≥ 650)
Air ducting possible to the right or left
Fan can be placed in the plinth area due to low installation height (100 mm) (only when using the ULS plinth fan).
Mounting type: flush-mounted or top-mounted
Universal control unit as central connection point can be placed easily and space-saving in the plinth area.
Connection between fume cupboard and universal control unit by means of a CAT 5 communication cable.
The drawers or shelves in the base unit must be removable for maintenance and cleaning purposes.
The BORA Ecotube duct system is optimally matched to the BORA hob fume cupboards and guarantees 100% function and best performance. In the case of an exhaust air path longer than 6m or high pressure losses, an additional universal fan module must be used.

BORA hob extractor PKA3, Professional 3.0

[> Web link](#)

Planning note: With these units, the duct connection is designed for the BORA Ecotube duct system. To connect BORA Ecotube (connection 245 x 89 mm) with Naber connections (222 x 89 mm), an adapter (EFA, 40.001.779.00) is available / can be ordered separately. Can be freely combined with all BORA universal fan modules (can be ordered separately, fan motor not included in PKA3 scope of delivery).

Accessory

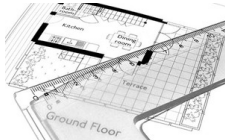
Optional accessories



> Weblink
40.001.767.00 / CHF 97.-
BORA socket USTJ



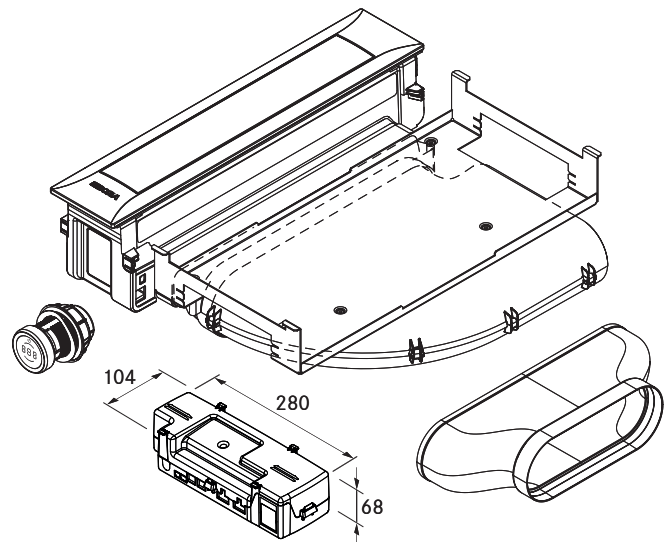
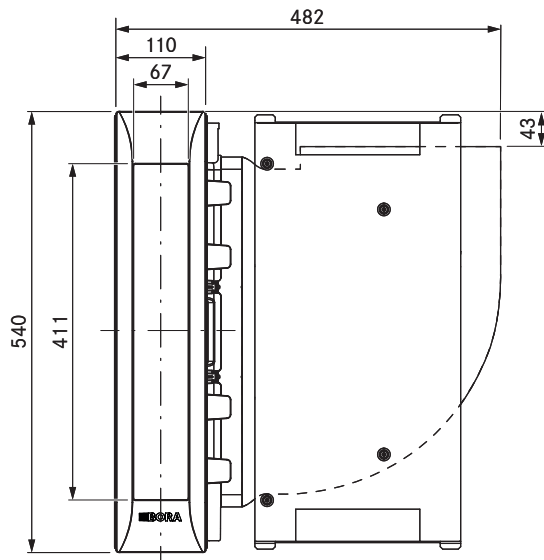
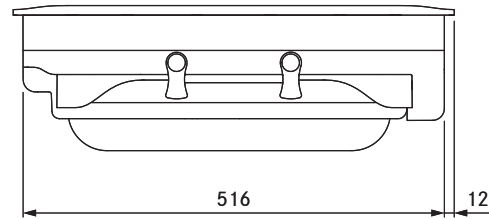
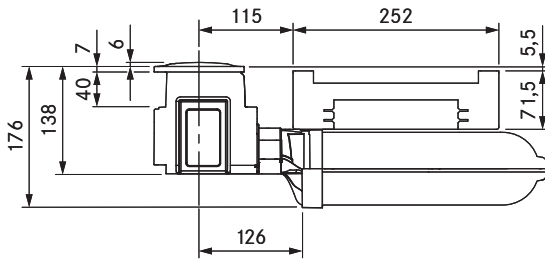
> Weblink
40.002.034.00 / CHF 135.-
BORA socket USTJAB All Black



> Weblink
80.100.016.00 / CHF 359.-
Ventilation planning



> Weblink
80.100.017.00 / CHF 192.-
Revision of the planning



technical data

Supply voltage	220 – 240 V
Frequency	50/60 Hz
Maximum power consumption	550 W
Power supply cable length	2 m
Dimensions (width x depth x height)	482 x 540 x 176 mm
Weight (incl. accessories/packaging)	9.25 kg
Cooktop extractor power levels	1 – 9, P
duct connection	BORA Ecotube

Product description

- Intuitive control knob
- Automatic cover flap
- Premium design
- Minimum volume
- Simple cleaning
- Integrated grease drip pan
- Genuine stainless steel grease filter
- Modular system
- Automatic extractor control
- Demo mode

Scope of delivery

- Cooktop extractor PKA3 with integrated 90° bend
- Straight duct element
- Control knob
- cover flap
- stainless steel grease filter
- Filter tray
- Maintenance tray
- CAT 5 communication cable
- Universal control unit
- connection cable for the control knob
- operating and installation instructions
- height adjustment plate set
- Mounting clamps
- Power supply cable with type E + F plugs
- Ecotube seal flat EFD

Accessories

- PKA1FF stainless steel grease filter
- PKA1VK cover flap
- PKA1FW filter tray
- UNLI type I power supply cable (AUS)
- UNLJ type J power supply cable (CH)
- UNLG type G power supply cable (GB-IE)
- UNLB type B power supply cable (PH)
- UNLH type H power supply cable (IL)

product- and planning instructions

- Suitable for use as a recirculation or exhaust system
- Compatible with all BORA Professional 3.0 cooktops and BORA Universal fan modules
- Use of an additional fan module is possible for very long or complex exhaust air channels
- The worktop height can be adjusted as necessary
- Worktop depth: ≥ 700 mm (in conjunction with the straight duct element ≥ 650 mm)
- Airflow possible to the right or left
- Fan can be positioned in the plinth area as a result of the low installation height (100 mm) (when using the ULS plinth fan only)
- Installation type: flush or surface-mounted
- Universal control unit as central connection point can be simply and compactly positioned in the plinth area
- The extractor and Universal control unit are connected by a CAT 5 communication cable
- The drawers and/or shelves in the floor unit must be removable for maintenance and cleaning purposes
- The BORA Ecotube duct system is optimally tailored to the BORA cooktop extractors and guarantees 100% functionality and optimum performance
- The Professional cooktop extractor system can be combined with all BORA sockets