

EFRG, BORA Ecotubebridge flat round straight

[> Web link](#)

Article no.
40.001.786.00

Price CHF
55.- D excl. VAT

Product description

EFRG BORA Ecotube bridge flat round straight incl. sealing material

Technical data

Dimensions (W x D x H)

255 x 190 x 165 mm

Material characteristics

V0 according to UL94

B1 according to DIN 4102-1

Number of seals required*:

1 x EFD, 1 x ERD

Weight

0,3 kg

* Gaskets are included in the price and delivery.

Accessory (to be ordered separately)

EFMS/ERMS mounting flange

Planning tips

Moulded part with flat sleeve

Moulded part with round sleeve

For use with units with a BORA Ecotube duct connection (245 x 89 mm). To connect BORA Ecotube to Naber fittings (222 x 89 mm), an adapter (EFA, 40.001.779) is available / to be ordered separately.

Accessory

Optional accessories



[> Weblink](#)

40.001.784.00 / CHF 16.-
EFMS, BORA Ecotube
installation kit flat



[> Weblink](#)

40.001.819.00 / CHF 16.-
ERMS, BORA Ecotube
installation set round

Spares

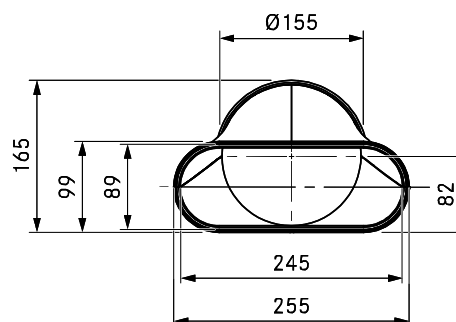
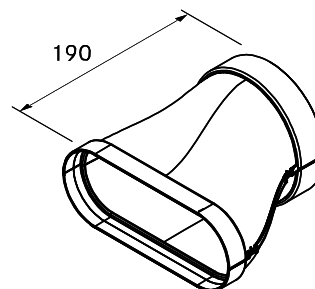
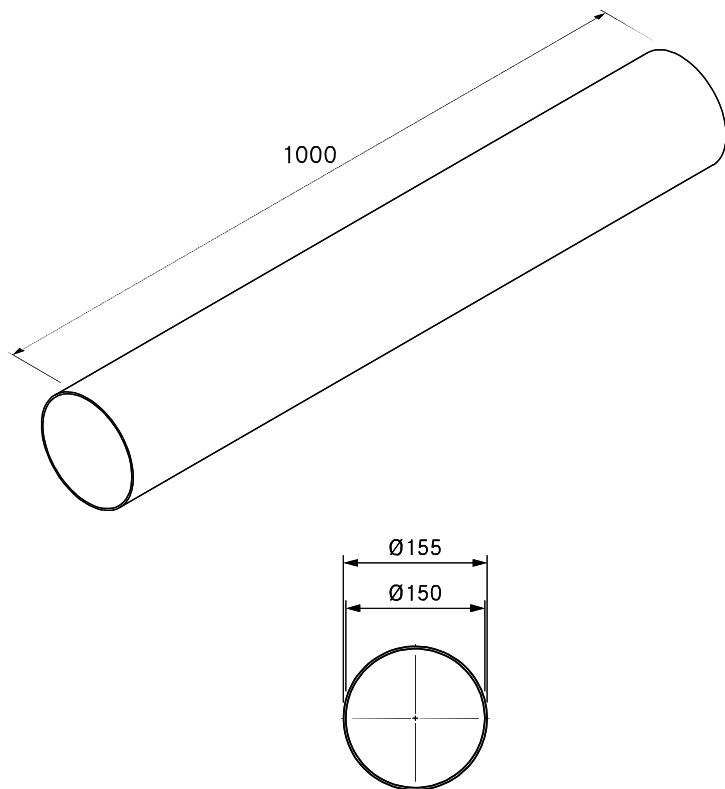
You can find the compatible range of spares here [> Weblink](#)

ER1000

BORA Ecotube Rundkanal 1000 mm

EFRG

BORA Ecotube Übergang flach rund gerade



Technische Daten

Abmessungen (BxTxH)	155 x 1000 mm
Materialeigenschaft	V0 nach UL94, B1 nach DIN 4102-1
Anzahl notwendiger Dichtungen	-
Gewicht	1,6 kg

Technische Daten

Abmessungen (BxTxH)	255 x 190 x 155 mm
Materialeigenschaft	V0 nach UL94
Anzahl notwendiger Dichtungen	1 x EFD, 1 x ERD
Gewicht	0,3 kg

Zubehör

- Montagebügel Set EFMS/ERMS

Planungshinweise

- Formteil mit einer Muffenausbildung flach
- Formteil mit einer Muffenausbildung rund