

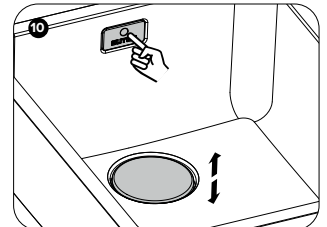
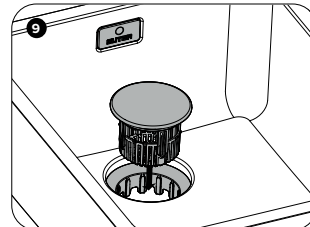
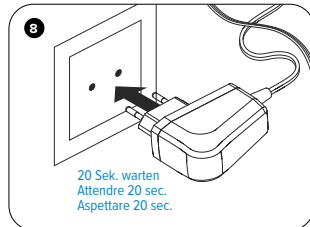
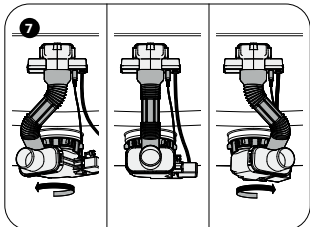
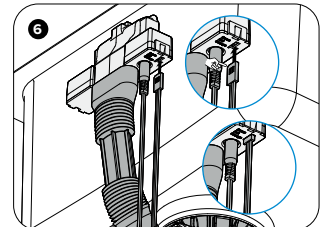
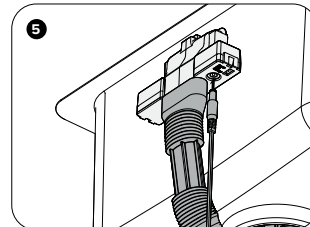
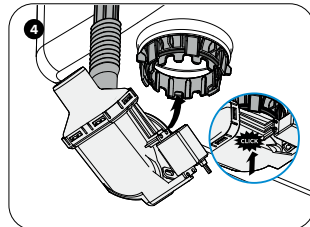
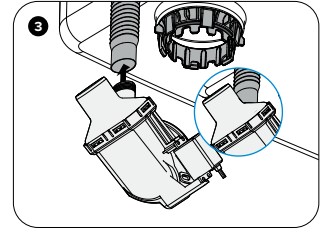
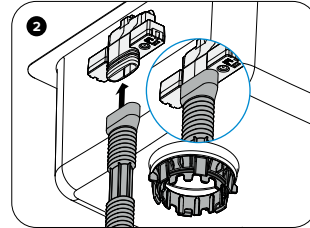
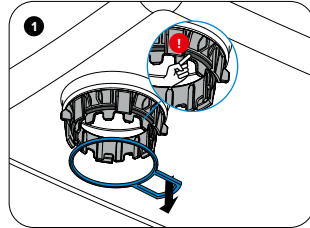
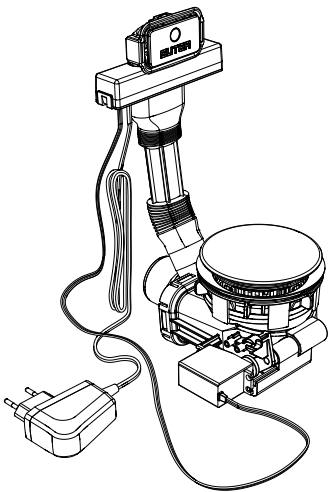
Montageanleitung Instructions de pose Istruzioni per il montaggio Assembly Instructions



TouchFlow Desino

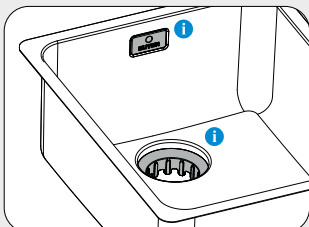


Anleitung Ventilmontage für TouchFlow Unterbau-Becken
Instructions de pose soupape pour TouchFlow éviers sous pierre
Istruzioni per il montaggio della piletta dei TouchFlow lavelli sottopiano
Valve assembly instructions for TouchFlow recessed basins

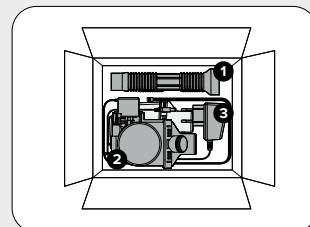
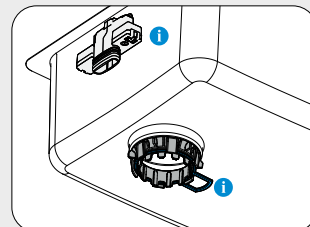


Anleitung für Ventilmontage TouchFlow Flächenbündige-Spülen siehe Rückseite
Instructions de pose soupape pour TouchFlow éviers pour montage affleuré- voir au verso
Istruzioni per il montaggio della piletta dei TouchFlow lavelli a filo top – vedi retro
Valve assembly instructions for TouchFlow flush-mounted sinks – see back page

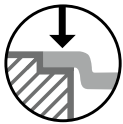
Auslieferungszustand
État à la livraison
Corredo della fornitura
Condition upon delivery



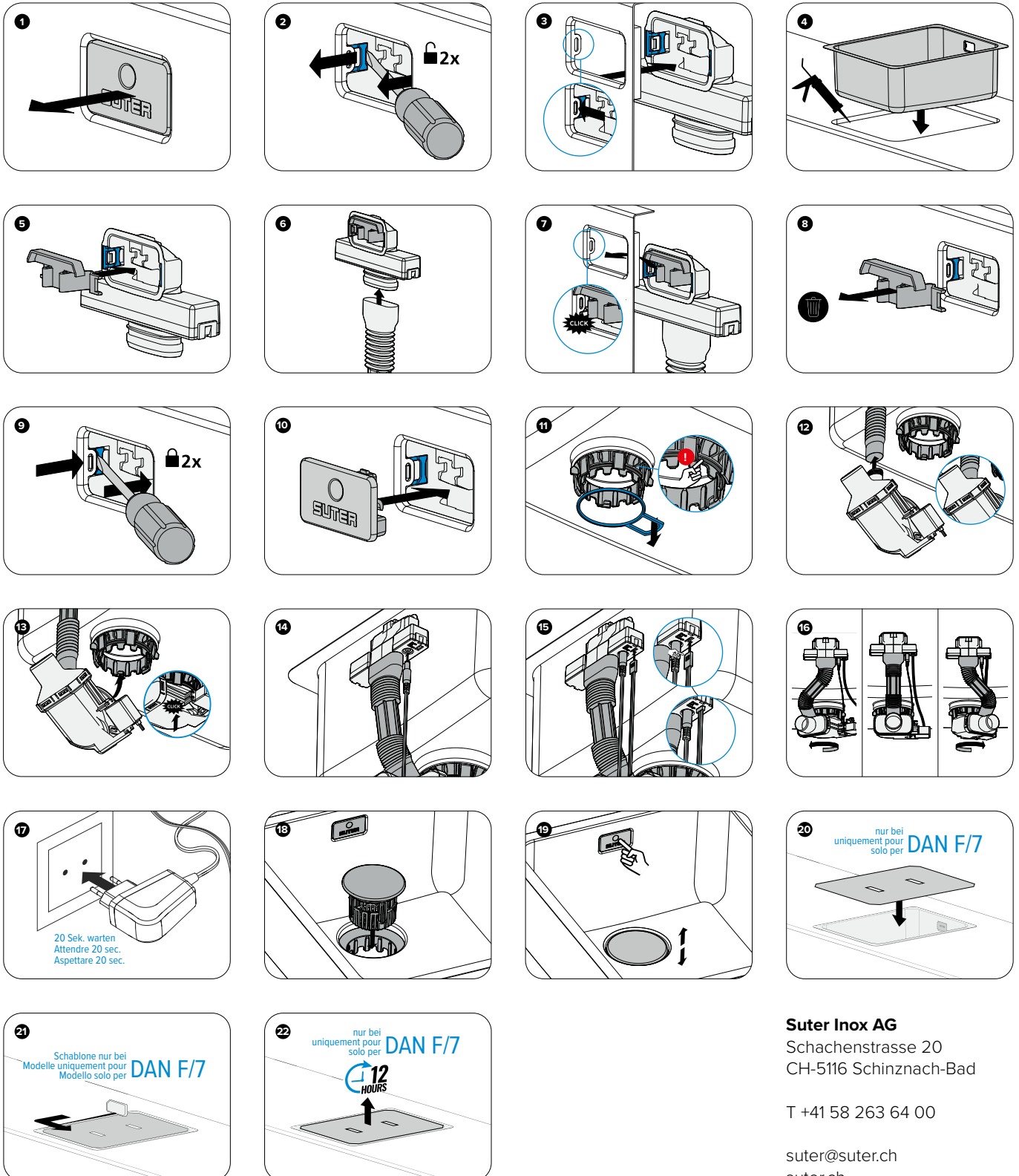
i Vormontage ab Werk
Pré-montage en usine
Premontaggio in fabbrica
Pre-assembly in the factory



- 1** Ablaufverbindung
Raccord vidage
Raccordo di scarico
Drain connection
- 2** Ablaufventil
Soupape vidage
Piletta di scarico
Drain valve
- 3** Netzteil
Adaptateur secteur
Alimentatore
Power supply unit



Anleitung Ventilmontage für TouchFlow Flächenbündige-Spülen
 Instructions de pose soupape pour éviers pour TouchFlow éviers pour montage affleuré
 Istruzioni per il montaggio della piletta dei TouchFlow lavelli a filo top
 Valve assembly instructions for TouchFlow flush-mounted sinks



Suter Inox AG
 Schachenstrasse 20
 CH-5116 Schznznach-Bad

T +41 58 263 64 00

suter@suter.ch
 suter.ch

Kundendienst
 Service après-vente
 Servizio clienti
 Customer service

T +41 58 263 64 80

kundendienst@suter.ch
 sav@suter.ch
 serviziolienti@suter.ch

Anleitung für Ventilmontage TouchFlow Unterbau-Becken siehe Vorderseite
 Instructions de pose soupape pour TouchFlow éviers sous pierre – voir page avant
 Istruzioni per il montaggio della piletta dei TouchFlow lavelli sottopiano – vedi parte anteriore
 Valve assembly for TouchFlow recessed basins – see front page