

**Accento A 45IF/12**
[> Weblink](#)


**Montaggio**  
Lavelli a filo top / Lavelli sopraiano

**Modello**  
A 45IF/12

**Materiale**  
Acciaio inox 18/10

**N. di articolo**  
10.104.539.00

**Dimensioni base**  
50 cm

**Piletta**  
3½" Tipo

**Finitura**  
Lucido

**Prezzo in CHF**  
1'397.- IVA esclusa

**Dimensioni lavello**  
450x400x175mm

**Raggi d'angolo**  
12 mm

**Tecnologia di scarico e troppopieno**
**Tecnologia di scarico e troppopieno**


Griglietta - tipo S



Placchetta di troppopieno a ribalta

**Prezzi (aggiornati al 22.06.26 / IVA esclusa)**

Modello	Materiale	Piletta	N. di articolo	Prezzo in CHF	
Accento A 45IF/12	Acciaio inox 18/10, Lucido	3½" Tipo	10.104.539.00	1'397.-	<a href="#">&gt; Weblink</a>

**Accessorio**

## Accessori opzionali



[> Weblink](#)  
40.000.912.00 / CHF  
106.-  
Vaschetta, forato



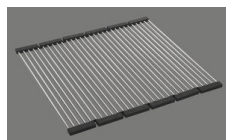
[> Weblink](#)  
40.001.289.00 / CHF  
106.-  
Vaschetta, non forato



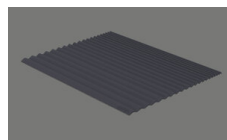
[> Weblink](#)  
40.000.909.00 / CHF  
151.-  
Tagliere, in vetro, bianco



[> Weblink](#)  
40.001.277.00 / CHF  
151.-  
Tagliere, sintetico



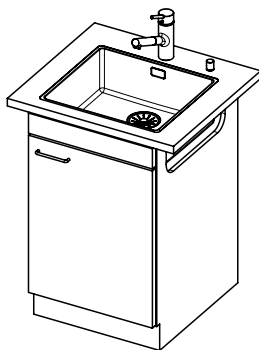
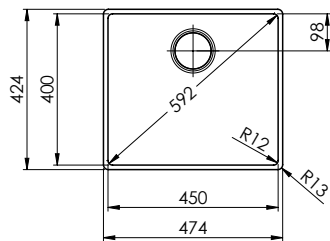
[> Weblink](#)  
40.001.138.00 / CHF  
125.-  
Inox Pad



[> Weblink](#)  
40.002.008.00 / CHF 51.-  
Maro tappetino  
scolapiatti, Dark Grey

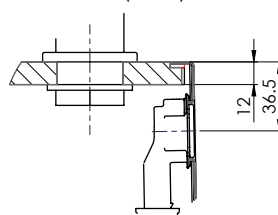
# Accento A 451F/12 sFlow Typ S

**Randbreite 12mm**  
**Bord de 12mm de largeur**  
**Larghezza bordo 12mm**

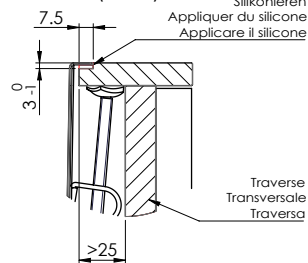


Für 12mm Arbeitsplatte.  
 Pour plan de travail de 12mm.  
 Per piano di lavoro da 12mm.

X (1:2)

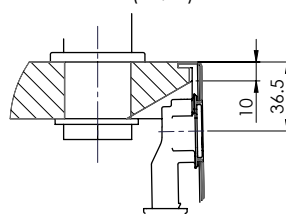


Y (1:2)

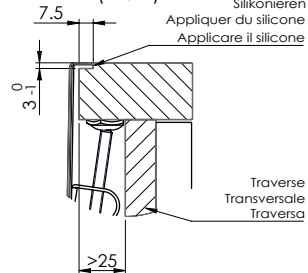


Für 13 - 30mm Arbeitsplatte.  
 Pour plan de travail de 13 - 30mm.  
 Per piano di lavoro da 13 - 30mm.

X (1:2)

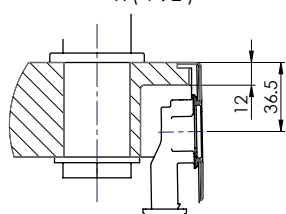


Y (1:2)

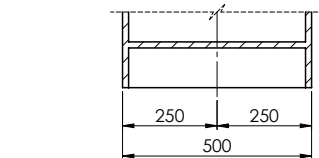
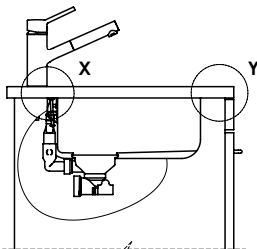
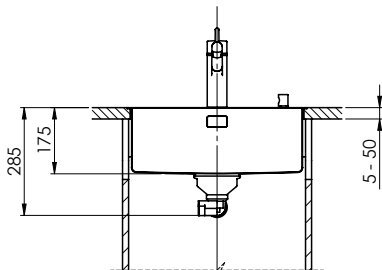
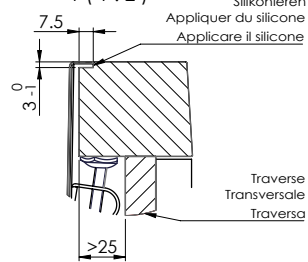


Für 13 - 50mm Arbeitsplatte.  
 Pour plan de travail de 13 - 50mm.  
 Per piano di lavoro da 13 - 50mm.

X (1:2)



Y (1:2)



Bei der Planung die Traverse im Möbel beachten!

Faites attention à la barre transversale dans les meubles lors de la planification!

Presta attenzione alla traversa nei mobili durante la pianificazione!

Vom flächenbündigen Einbau in beschichteten Spanplatten raten wir ab.  
 Nous vous déconseillons le montage à fleur sur des panneaux de particules enduits.  
 Sconsigliamo il montaggio a filo top in pannelli di truciolato laminato.



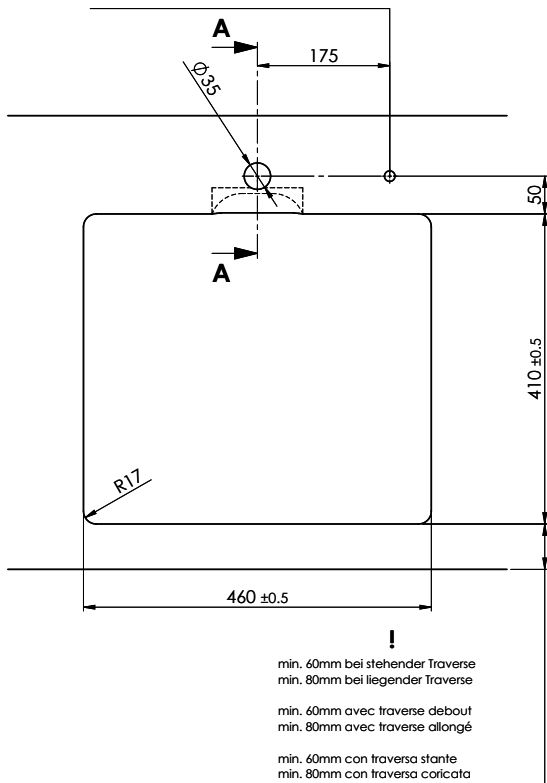
# Accento A 45IF/12 sFlow Typ S

**Ausschnitt für flach aufliegender Einbau - Randbreite 12mm:**  
**Mesure de coupeure pour montage en appui - Bord de 12mm de largeur:**  
**Intaglio per montaggio soprapiano - Larghezza bordo 12mm:**

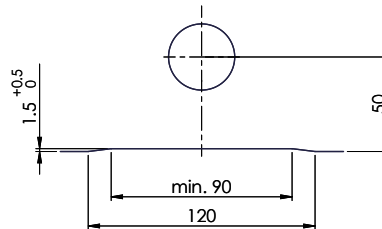
Bohrung für Zug- und Druckknöpfe ø14  
 Bohrung für Drehknopf ø25

Trou pour boutons et Pouvoirs de commande ø14  
 Trou pour bouton rotatif ø25

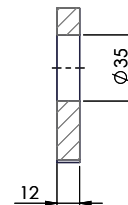
Foro per Pomelli tiranti e Pomelli pulsanti ø14  
 Foro per Pomolo girevoli ø25



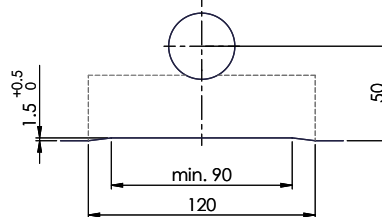
Für 12mm Arbeitsplatte.  
 Pour plan de travail de 12 mm.  
 Per piano di lavoro da 12 mm.



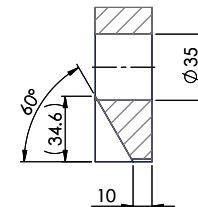
A-A (1 : 2)



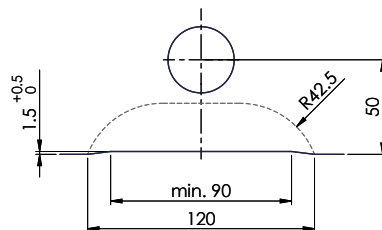
Für 13 - 30mm Arbeitsplatte.  
 Pour plan de travail de 13 - 30mm.  
 Per piano di lavoro da 13 - 30mm.



A-A (1 : 2)



Für 13 - 50mm Arbeitsplatte.  
 Pour plan de travail de 13 - 50mm.  
 Per piano di lavoro da 13 - 50mm.



A-A (1 : 2)

