

Daneo DAN 40IF7

> Weblink



Montaggio
Lavelli a filo top
Modello
DAN 40IF/7
Materiale
Acciaio inox 18/10
N. di articolo
10.104.166.00

Dimensioni base
45 cm
Piletta
3½" TouchFlow
Finitura
Opaco
TRA
0.19
Prezzo in CHF
1'457.- IVA esclusa

Dimensioni lavello
400x400x175mm
Raggi d'angolo
22 mm

Tecnologia di scarico e troppopieno



Griglietta - tipo S



Placchetta di troppopieno a ribalta TouchFlow

Premontaggio della piletta

Montaggio della piletta in fabbrica

Distributore - opzioni di montaggio

Posizione a scelta

Tecnologia di scarico e troppopieno

Pomolo inclusi

Prezzi (aggiornati al 06.05.26 / IVA esclusa)

Modello	Materiale	Piletta	N. di articolo	Prezzo in CHF	
Daneo DAN 40F/7	Acciaio inox 18/10, Opaco	3½" Tipo	10.104.168.00	1'218.-	> Weblink
		3½" Salvaspazio	10.104.167.00	1'259.-	> Weblink
		3½" TouchFlow	10.104.166.00	1'457.-	> Weblink

Descrizione del prodotto

Montaggio a filo top: Consiglio per la scelta del piano di lavoro

Consigliamo il montaggio nei piani di lavoro in ceramica, granito, pietra artificiale (per es. Corian o Varicor) oppure in legno massiccio. Sconsigliamo la posa in pannelli di truciolato rivestiti.

Accessorio

Accessori opzionali



> Weblink
40.000.912.00 / CHF
106.-
Vaschetta, forato



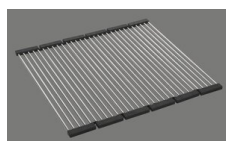
> Weblink
40.001.289.00 / CHF
106.-
Vaschetta, non forato



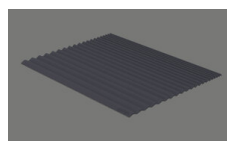
> Weblink
40.000.909.00 / CHF
151.-
Tagliere, in vetro, bianco



> Weblink
40.001.277.00 / CHF
151.-
Tagliere, sintetico



> Weblink
40.001.138.00 / CHF
125.-
Inox Pad



> Weblink
40.002.008.00 / CHF 51.-
Maro tappetino
scolapiatti, Dark Grey

Ricambi

Qui trovate tutti gli accessori compatibili > Weblink

Öađ V[ÄÜÖP Ä €ÖÖ

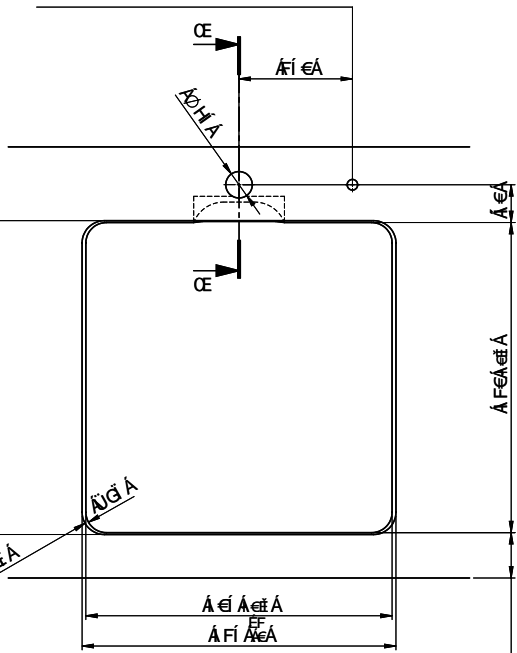
5i ggW b]hZ f Z] W YbV bX] Yb9]bVU] FÜbXYV]Y+ a a .
 A Ygi fYXYVei di fYdci f a cblU] Y[ZYi f! fcfXY+ a a XYU] Y f .
 -bH]] c' dY a cblU]] c UZ] c' f d'] @] f] YmU] VcfXc' + a a .



Q[@] * A-:Ä" * fK] aU] : @]] -ÄsfI
 Q[@] * A-:Ä" * @]] -Äsf Ä

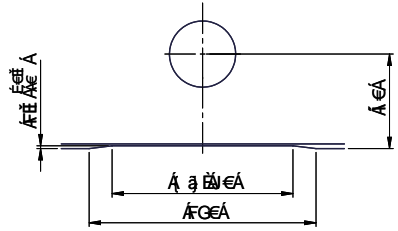
V[] A [] : Ä] [] q] * A-ÄU] * - :] a-Ä" * Ä] ((a) a-ÄsfI
 V[] A [] : Ä] [] q] Ä] csaÄsf Ä

Q[] : Ä" * ÄU] (]) : Ä] a) cblÄU] (]) : Ä] f] a) cblsfI
 Q[] : Ä" * ÄU] ([]] A-Ä"] : Ä] cblÄU] (])

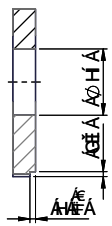


- (a) : Ä] cblÄU] (]) : Ä] f] a) cblsfI
- (a) : Ä] cblÄU] ([]] A-Ä"] : Ä] cblÄU] (])
- (a) : Ä] cblÄU] (]) : Ä] f] a) cblsfI
- (a) : Ä] cblÄU] ([]] A-Ä"] : Ä] cblÄU] (])
- (a) : Ä] cblÄU] (]) : Ä] f] a) cblsfI

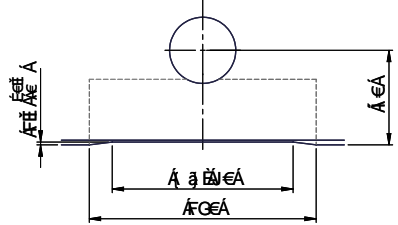
Ö-:Ä" * ÄU] (]) : Ä] f] a) cblsfI
 U[] : Ä] cblÄU] (]) : Ä] f] a) cblsfI
 U[] : Ä] cblÄU] ([]] A-Ä"] : Ä] cblÄU] (])



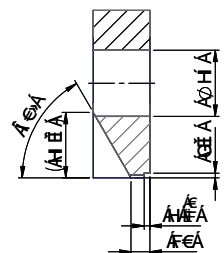
ÖÖPÄ FÄ GÄ



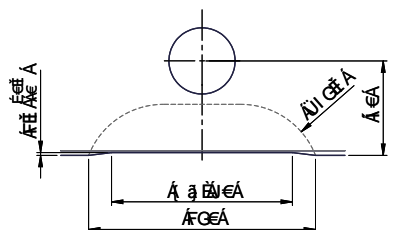
Ö-:Ä" * ÄU] (]) : Ä] f] a) cblsfI
 U[] : Ä] cblÄU] (]) : Ä] f] a) cblsfI
 U[] : Ä] cblÄU] ([]] A-Ä"] : Ä] cblÄU] (])



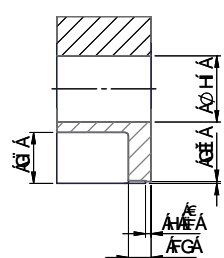
ÖÖPÄ FÄ GÄ



Ö-:Ä" * ÄU] (]) : Ä] f] a) cblsfI
 U[] : Ä] cblÄU] (]) : Ä] f] a) cblsfI
 U[] : Ä] cblÄU] ([]] A-Ä"] : Ä] cblÄU] (])



ÖÖPÄ FÄ GÄ



Öađ V[ÄÜÖP Ä €ÖÖ
 Suter Inox AG
 Industriestrasse 29
 CH-5160 Schönenbuch
 Tel. +41 58 200 21 00
 Fax +41 58 200 21 01
 suter.ch