

Linero LIO 18F/7
[> Weblink](#)


Montaggio
Lavelli a filo top

Modello
LIO 18F/7

Materiale
Acciaio inox 18/10

N. di articolo
10.105.654.00

Dimensioni base
35 cm

Piletta
3½" Tipo

Finitura
Opaco

Prezzo in CHF
987,- IVA esclusa

Dimensioni lavello
180x400x140mm

Raggi d'angolo
15 mm

Tecnologia di scarico e troppopieno


Griglietta - tipo M



Placchetta di troppopieno a ribalta

Premontaggio della piletta

Premontaggio della piletta in fabbrica

Distributore - opzioni di montaggio

Posizione a scelta

Tecnologia di scarico e troppopieno
Prezzi (aggiornati al 06.05.26 / IVA esclusa)

Modello	Materiale	Piletta	N. di articolo	Prezzo in CHF
Linero LIO 18F/7	Acciaio inox 18/10, Opaco	3½" Tipo	10.105.654.00	987,- > Weblink

Accessorio

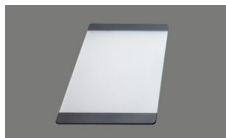
Accessori opzionali



> Weblink
40.000.912.00 / CHF
106,-
Vaschetta, forato



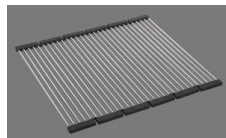
> Weblink
40.001.289.00 / CHF
106,-
Vaschetta, non forato



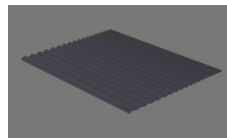
> Weblink
40.000.909.00 / CHF
151,-
Tagliere, in vetro, bianco



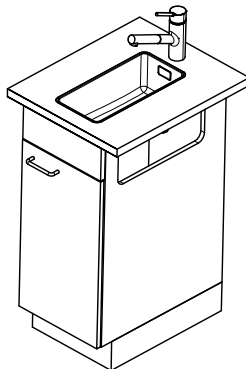
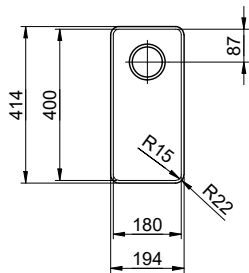
> Weblink
40.001.277.00 / CHF
151,-
Tagliere, sintetico



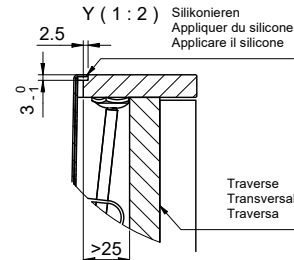
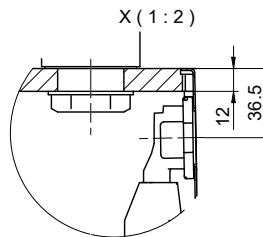
> Weblink
40.001.138.00 / CHF
125,-
Inox Pad



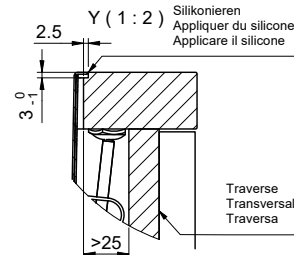
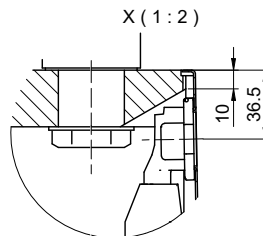
> Weblink
40.002.008.00 / CHF 51,-
Maro tappetino scolapiatti, Dark Grey



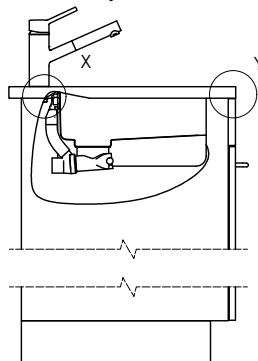
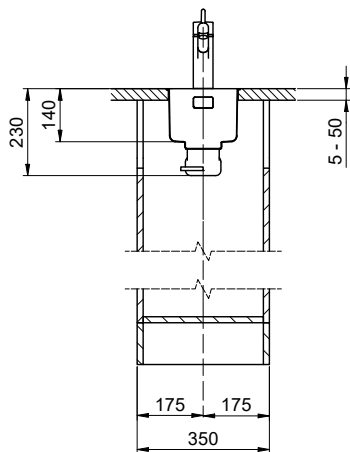
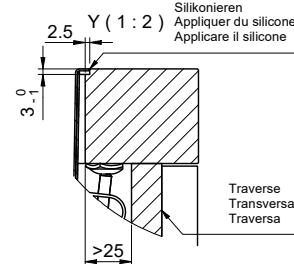
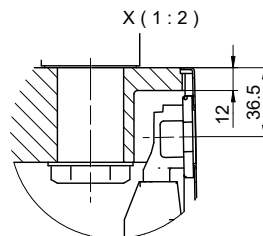
Für 12mm Arbeitsplatte.
 Pour plan de travail de 12mm.
 Per piano di lavoro da 12mm.



Für 13 - 30mm Arbeitsplatte.
 Pour plan de travail de 13 - 30mm.
 Per piano di lavoro da 13 - 30mm.



Für 13 - 50mm Arbeitsplatte.
 Pour plan de travail de 13 - 50mm.
 Per piano di lavoro da 13 - 50mm.



Bei der Planung die Traverse im Möbel beachten!

Faites attention à la barre transversale dans les meubles lors de la planification!

Presta attenzione alla traversa nei mobili durante la pianificazione!

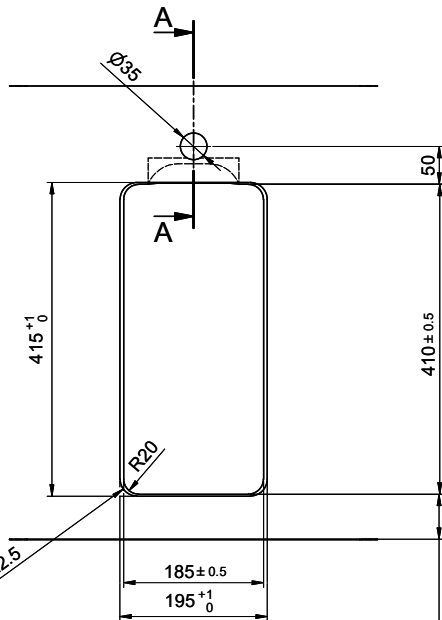
Vom flächenbündigen Einbau in beschichtete Spanplatten raten wir ab.

Nous vous déconseillons le montage à fleur sur des panneaux de particules enduits.

Sconsigliamo il montaggio a filo top in pannelli di truciolato laminato.

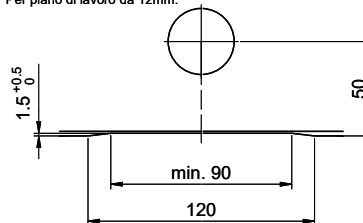
Linero LIO 18F/7 Desino

Ausschnitt für flächenbündigen Einbau - Randbreite 7mm:
Mesure de coupure pour montage à fleur - Bord de 7mm de largeur:
Intaglio per montaggio a filo top - Larghezza bordo 7mm:

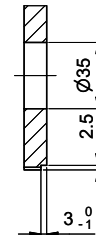


min. 60mm bei stehender Traverse.
 min. 80mm bei liegender Traverse.
 min. 60mm avec traverse debout.
 min. 80mm avec traverse allongé.
 min. 60mm con traversa stante.
 min. 80mm con traversa coricata.

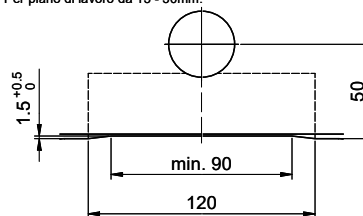
Für 12mm Arbeitsplatte.
 Pour plan de travail de 12mm.
 Per piano di lavoro da 12mm.



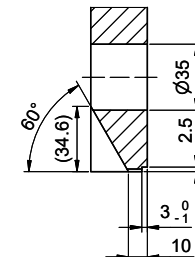
A-A (1 : 2)



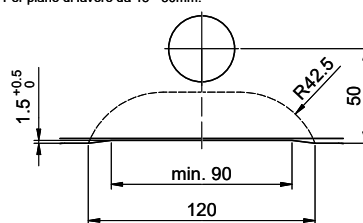
Für 13 - 30mm Arbeitsplatte.
 Pour plan de travail de 13 - 30mm.
 Per piano di lavoro da 13 - 30mm.



A-A (1 : 2)



Für 13 - 50mm Arbeitsplatte.
 Pour plan de travail de 13 - 50mm.
 Per piano di lavoro da 13 - 50mm.



A-A (1 : 2)

