

## Linero LIO 55F/7

> Weblink

Dimensioni base 55 cm



**Montaggio**  
Lavelli a filo top

**Modello**  
LIO 55F/7

**Materiale**  
Acciaio inox 18/10

**N. di articolo**  
10.106.245.00

**Dimensioni base**  
55 cm

**Piletta**  
3½" Salvaspazio

**Finitura**  
Opaco

**Prezzo in CHF**  
1'644.- IVA esclusa

**Dimensioni lavello**  
550x400x175mm

**Raggi d'angolo**  
15 mm

### Tecnologia di scarico e troppopieno



Griglietta - tipo M



Placchetta di troppopieno a ribalta

### Premontaggio della piletta

Premontaggio della piletta in fabbrica

### Distributore - opzioni di montaggio

Posizione a scelta

### Tecnologia di scarico e troppopieno

#### Pulsante inclusi



Pulsante, cromato

### Prezzi (aggiornati al 06.05.26 / IVA esclusa)

Modello	Materiale	Piletta	N. di articolo	Prezzo in CHF	
Linero LIO 55F/7	Acciaio inox 18/10, Opaco	3½" Tipo	10.105.674.00	1'558.-	> Weblink
		3½" Salvaspazio	10.105.673.00	1'599.-	> Weblink
		3½" Salvaspazio	10.106.245.00	1'644.-	> Weblink
		3½" TouchFlow	10.105.672.00	1'797.-	> Weblink

### Accessorio

#### Accessori opzionali



> Weblink  
40.000.912.00 / CHF  
106.-  
Vaschetta, forato



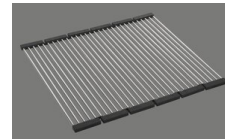
> Weblink  
40.001.289.00 / CHF  
106.-  
Vaschetta, non forato



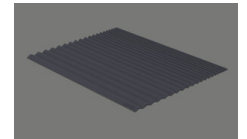
> Weblink  
40.000.909.00 / CHF  
151.-  
Tagliere, in vetro, bianco



> Weblink  
40.001.277.00 / CHF  
151.-  
Tagliere, sintetico



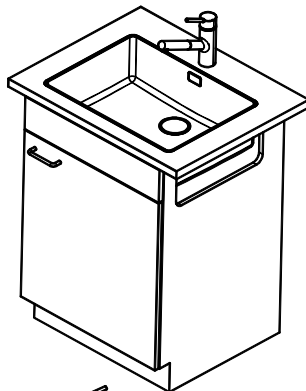
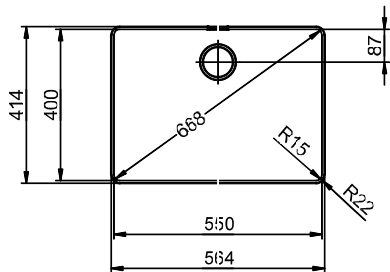
> Weblink  
40.001.138.00 / CHF  
125.-  
Inox Pad



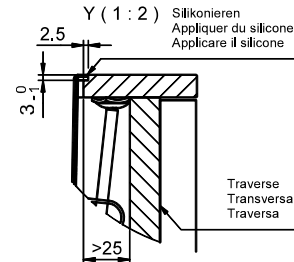
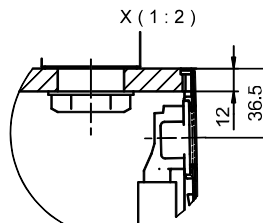
> Weblink  
40.002.008.00 / CHF 51.-  
Maro tappetino  
scolapiatti, Dark Grey

### Ricambi

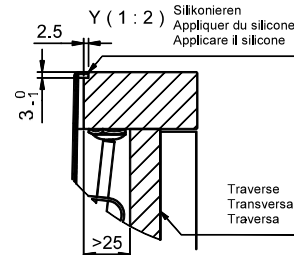
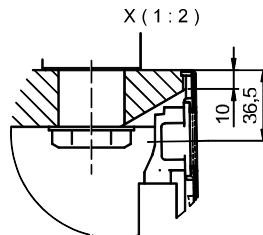
Qui trovate tutti gli accessori compatibili > Weblink



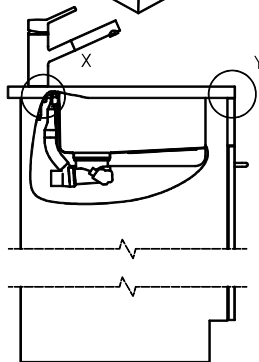
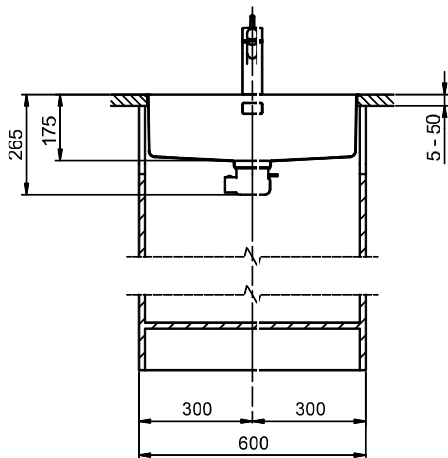
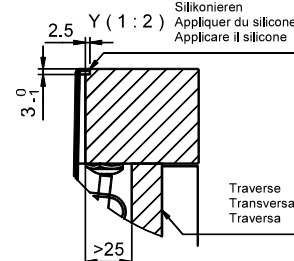
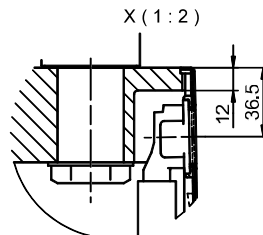
Für 12mm Arbeitsplatte.  
 Pour plan de travail de 12mm.  
 Per piano di lavoro da 12mm.



Für 13 - 30mm Arbeitsplatte.  
 Pour plan de travail de 13 - 30mm.  
 Per piano di lavoro da 13 - 30mm.



Für 13 - 50mm Arbeitsplatte.  
 Pour plan de travail de 13 - 50mm.  
 Per piano di lavoro da 13 - 50mm.



Bei der Planung die Traverse im Möbel beachten!

Faites attention à la barre transversale dans les meubles lors de la planification!

Presta attenzione alla traversa nei mobili durante la pianificazione!

Vom flächenbündigen Einbau in beschichtete Spanplatten raten wir ab.

Nous vous déconseillons le montage à fleur sur des panneaux de particules enduits.

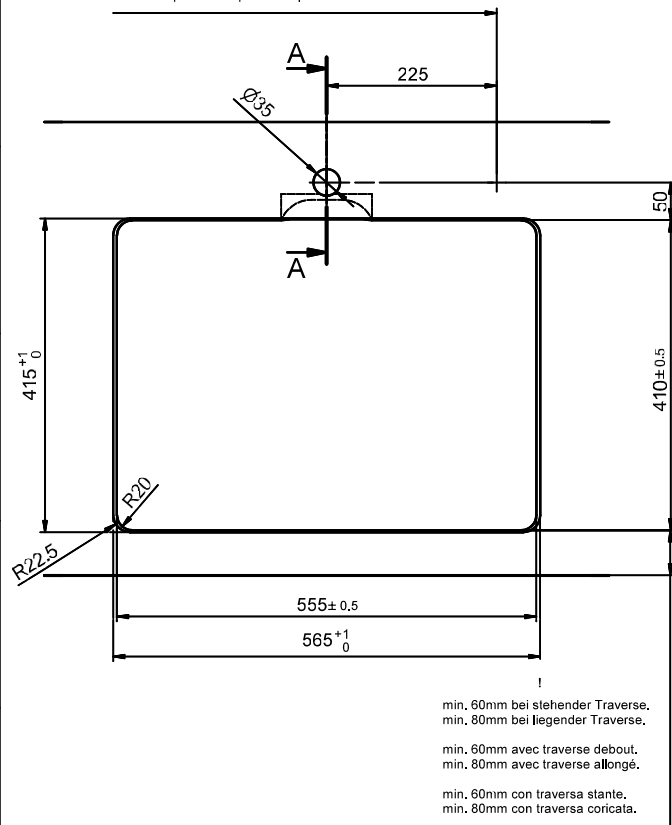
Sconsigliamo il montaggio a filo top in pannelli di truciolato laminato.

# Linero LIO 55F/7 Desino

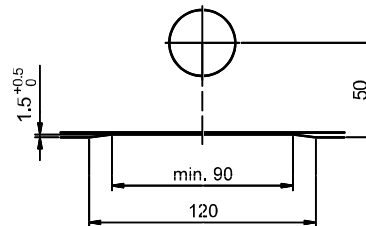
Ausschnitt für flächenbündigen Einbau - Randbreite 7mm:  
 Mesure de coupure pour montage à fleur - Bord de 7mm de largeur:  
 Intaglio per montaggio a filo top - Larghezza bordo 7mm:

Bohrung nur für externe Ventili-Bedienung:  
 Perçage uniquement pour une utilisation externe de la soupape:  
 Foratura solo per uso esterno della piletta:

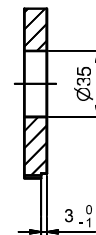
Zugknopf / bouton de commande / pomolo: Ø14  
 Drehknopf / bouton rotatif / pomolo girevole: Ø25  
 Druckknopf / bouton-poussoir / pulsante: Ø35



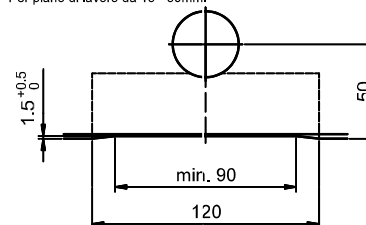
Für 12mm Arbeitsplatte.  
 Pour plan de travail de 12mm.  
 Per piano di lavoro da 12mm.



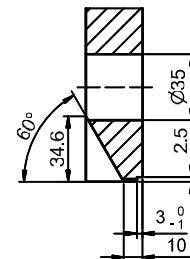
A-A (1 : 2)



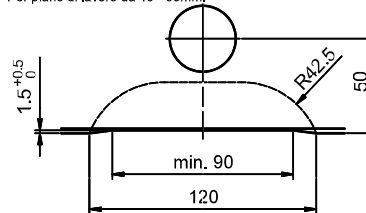
Für 13 - 30mm Arbeitsplatte.  
 Pour plan de travail de 13 - 30mm.  
 Per piano di lavoro da 13 - 30mm.



A-A (1 : 2)



Für 13 - 50mm Arbeitsplatte.  
 Pour plan de travail de 13 - 50mm.  
 Per piano di lavoro da 13 - 50mm.



A-A (1 : 2)

