

**Vantis VG 45IF/12 Green**
[> Weblink](#)


**Montaggio**  
Lavelli a filo top / Lavelli sopra piano

**Modello**  
VG 45IF/12 Green

**Materiale**  
Acciaio inox 18/10

**N. di articolo**  
10.105.779.00

**Dimensioni base**  
50 cm

**Piletta**  
3½" Salvaspazio

**Finitura**  
Opaco

**Prezzo in CHF**  
984.- IVA esclusa

**Dimensioni lavello**  
450x420x160mm

**Raggi d'angolo**  
35 mm

**Tecnologia di scarico e troppopieno**


Griglietta - tipo S



Placchetta di troppopieno a ribalta

**Premontaggio della piletta**

Montaggio della piletta in fabbrica

**Distributore - opzioni di montaggio**

Posizione a scelta

**Green Line**


Green Line è una versione di prodotto autonoma calibrata sulla sostenibilità.

**Pomolo**


Advant

**Prezzi (aggiornati al 14.05.26 / IVA esclusa)**

Modello	Materiale	Piletta	N. di articolo	Prezzo in CHF	
Vantis VG 45IF/12 Green	Acciaio inox 18/10, Opaco	3½" Tipo	10.105.780.00	935.-	> Weblink
		3½" TouchFlow	10.105.778.00	1'182.-	> Weblink
		3½" Salvaspazio	10.105.779.00	984.-	> Weblink

**Accessorio**
**Accessori opzionali**


> Weblink  
40.000.914.00 / CHF  
106.-  
Vaschetta, forato



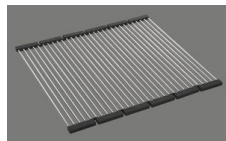
> Weblink  
40.001.290.00 / CHF  
106.-  
Vaschetta, non forato



> Weblink  
40.000.915.00 / CHF  
151.-  
Tagliere, in vetro, bianco



> Weblink  
40.001.147.00 / CHF  
151.-  
Tagliere, in legno



> Weblink  
40.001.138.00 / CHF  
125.-  
Innox Pad

**Ricambi**

Qui trovate tutti gli accessori compatibili &gt; Weblink



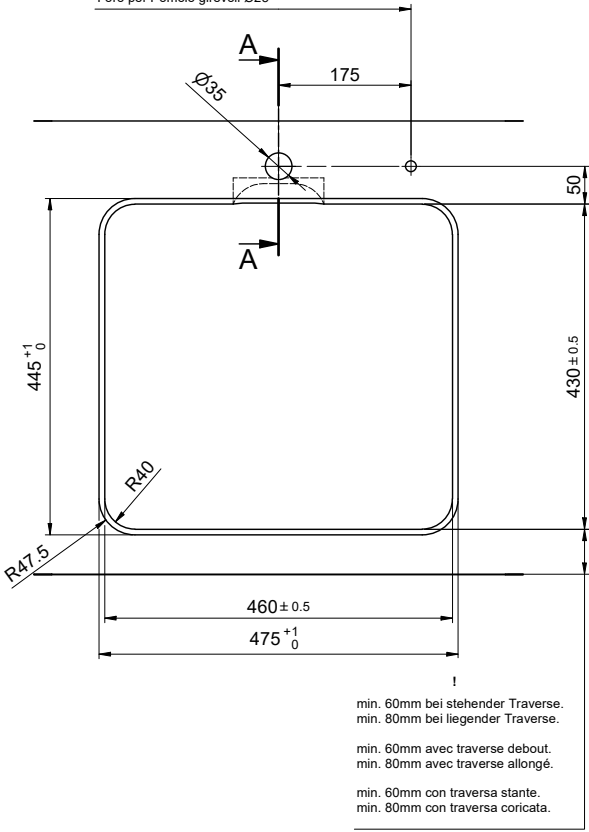
# Vantis VG 45IF/12 Green

**Ausschnitt für flächenbündigen Einbau - Randbreite 12mm:**  
**Mesure de coupure pour montage à fleur - Bord de 12mm de largeur:**  
**Intaglio per montaggio a filo top - Larghezza bordo 12mm:**

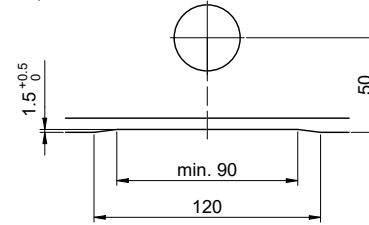
Bohrung für Zug- und Druckknöpfe Ø14  
 Bohrung für Drehknopf Ø25

Trou pour boutons et Poussoirs de commande Ø14  
 Trou pour bouton rotatif Ø25

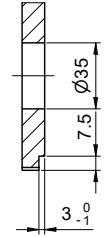
Foro per Pomelli tiranti e Pomelli pulsanti Ø14  
 Foro per Pomolo girevoli Ø25



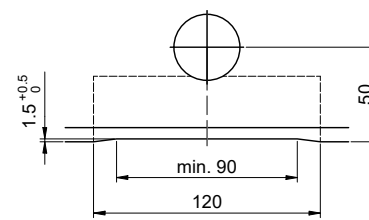
Für 12mm Arbeitsplatte.  
 Pour plan de travail de 12mm.  
 Per piano di lavoro da 12mm.



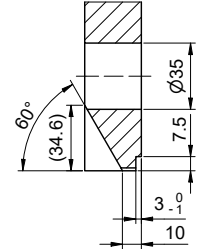
A-A (1 : 2)



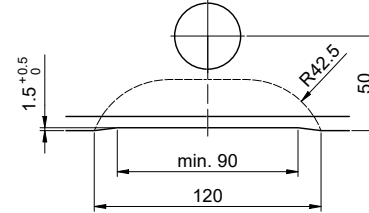
Für 13 - 30mm Arbeitsplatte.  
 Pour plan de travail de 13 - 30mm.  
 Per piano di lavoro da 13 - 30mm.



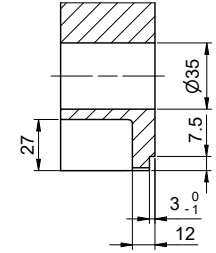
A-A (1 : 2)



Für 13 - 50mm Arbeitsplatte.  
 Pour plan de travail de 13 - 50mm.  
 Per piano di lavoro da 13 - 50mm.



A-A (1 : 2)



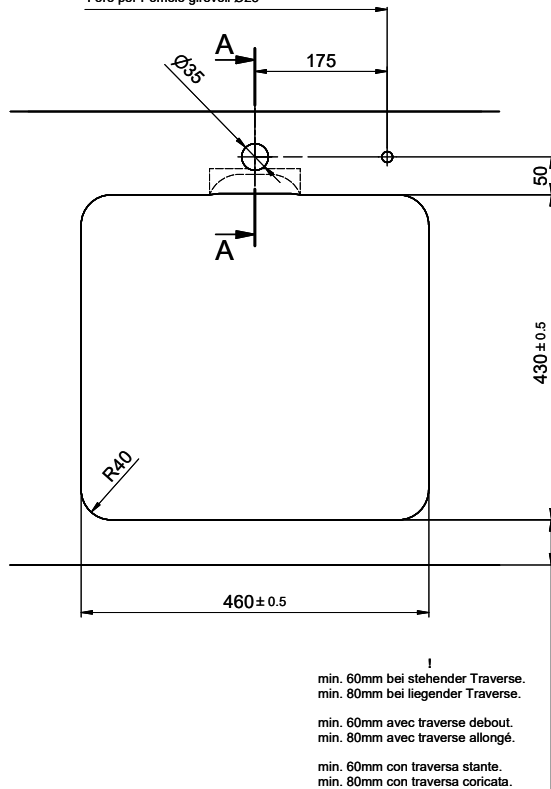
# Vantis VG 45IF/12 Green

**Ausschnitt für flach aufliegenden Einbau - Randbreite 12mm:**  
**Mesure de coupure pour montage en appui - Bord de 12mm de largeur:**  
**Intaglio per montaggio soprapiano - Larghezza bordo 12mm:**

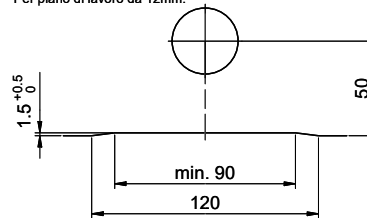
Bohrung für Zug- und Druckknöpfe Ø14  
 Bohrung für Drehknopf Ø25

Trou pour boutons et Pousoirs de commande Ø14  
 Trou pour bouton rotatif Ø25

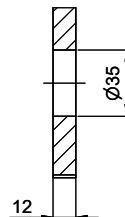
Foro per Pomelli tiranti e Pomelli pulsanti Ø14  
 Foro per Pomolo girevoli Ø25



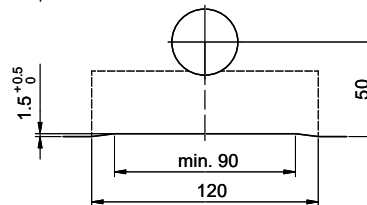
Für 12mm Arbeitsplatte.  
 Pour plan de travail de 12mm.  
 Per piano di lavoro da 12mm.



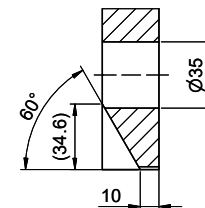
A-A (1 : 2)



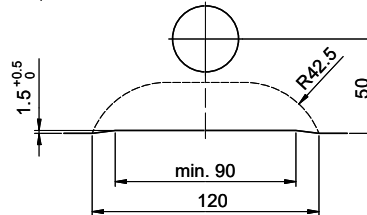
Für 13 - 30mm Arbeitsplatte.  
 Pour plan de travail de 13 - 30mm.  
 Per piano di lavoro da 13 - 30mm.



A-A (1 : 2)



Für 13 - 50mm Arbeitsplatte.  
 Pour plan de travail de 13 - 50mm.  
 Per piano di lavoro da 13 - 50mm.



A-A (1 : 2)

