

Vantis VG 50-35IF/12 Green

> Weblink



Dimensioni base 55 cm

**Montaggio**  
Lavelli a filo top / Lavelli sopra piano

**Modello**  
VG 50-35IF/12 Green

**Materiale**  
Acciaio inox 18/10

**N. di articolo**  
10.105.784.00

**Dimensioni base**  
55 cm

**Piletta**  
3½" TouchFlow

**Finitura**  
Opaco

**TRA**  
0.19

**Prezzo in CHF**  
1'137.- IVA esclusa

**Dimensioni lavello**  
500x350x160mm

**Raggi d'angolo**  
35 mm

Tecnologia di scarico e troppopieno



Griglietta - tipo S



Placchetta di troppopieno a ribalta TouchFlow

**Premontaggio della piletta**  
Montaggio della piletta in fabbrica

**Distributore - opzioni di montaggio**  
Posizione a scelta

Green Line



Green Line è una versione di prodotto autonoma calibrata sulla sostenibilità.

**Pomolo inclusi**

Prezzi (aggiornati al 21.06.26 / IVA esclusa)

Modello	Materiale	Piletta	N. di articolo	Prezzo in CHF	
Vantis VG 50-35IF/12 Green	Acciaio inox 18/10, Opaco	3½" Tipo	10.105.786.00	890.-	> Weblink
		3½" TouchFlow	10.105.784.00	1'137.-	> Weblink
		3½" Salvaspazio	10.105.785.00	939.-	> Weblink

Accessorio

Accessori opzionali



> Weblink  
40.000.914.00 / CHF  
106.-  
Vaschetta, forato



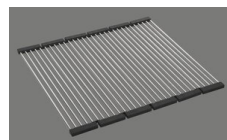
> Weblink  
40.001.290.00 / CHF  
106.-  
Vaschetta, non forato



> Weblink  
40.000.915.00 / CHF  
151.-  
Tagliere, in vetro, bianco



> Weblink  
40.001.147.00 / CHF  
151.-  
Tagliere, in legno



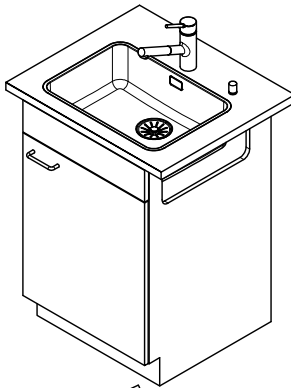
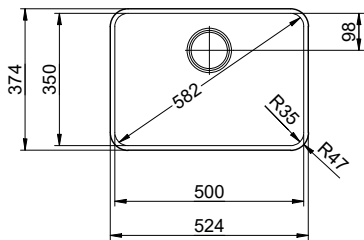
> Weblink  
40.001.138.00 / CHF  
125.-  
Inox Pad

Ricambi

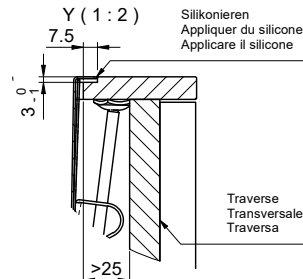
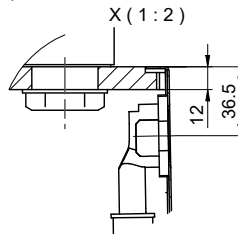
Qui trovate tutti gli accessori compatibili > Weblink

# Vantis VG 50-35IF/12 Green

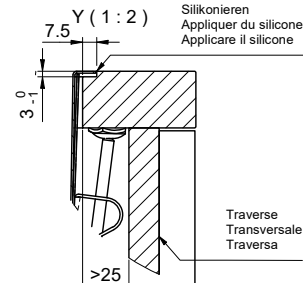
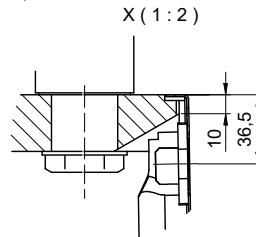
Randbreite 12mm  
 Bord de 12mm de largeur  
 Larghezza bordo 12mm



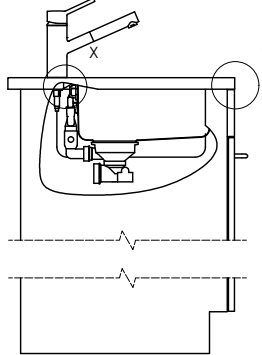
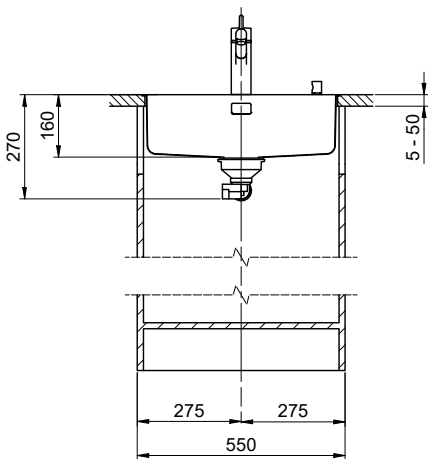
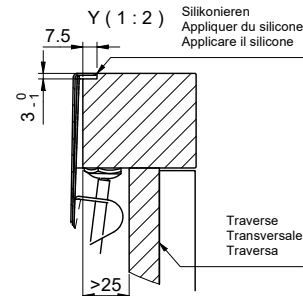
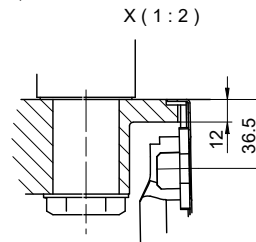
Für 12mm Arbeitsplatte.  
 Pour plan de travail de 12mm.  
 Per piano di lavoro da 12mm.



Für 13 - 30mm Arbeitsplatte.  
 Pour plan de travail de 13 - 30mm.  
 Per piano di lavoro da 13 - 30mm.



Für 13 - 50mm Arbeitsplatte.  
 Pour plan de travail de 13 - 50mm.  
 Per piano di lavoro da 13 - 50mm.



Bei der Planung die Traverse im Möbel beachten!

Faites attention à la barre transversale dans les meubles lors de la planification!

Presta attenzione alla traversa nei mobili durante la pianificazione!

Vom flächenbündigen Einbau in beschichtete Spanplatten raten wir ab.

Nous vous déconseillons le montage à fleur sur des panneaux de particules enduits.

Sconsigliamo il montaggio a filo top in pannelli di truciolato laminato.

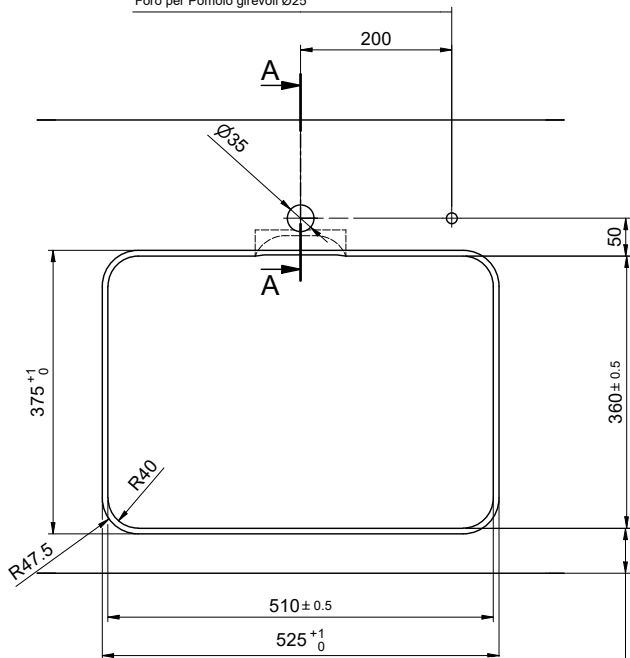
# Vantis VG 50-35IF/12 Green

**Ausschnitt für flächenbündigen Einbau - Randbreite 12mm:**  
**Mesure de coupe pour montage à fleur - Bord de 12mm de largeur:**  
**Intaglio per montaggio a filo top - Larghezza bordo 12mm:**

Bohrung für Zug- und Druckknöpfe Ø14  
 Bohrung für Drehknopf Ø25

Trou pour boutons et Pousoirs de commande Ø14  
 Trou pour bouton rotatif Ø25

Foro per Pomelli tiranti e Pomelli pulsanti Ø14  
 Foro per Pomolo girevoli Ø25

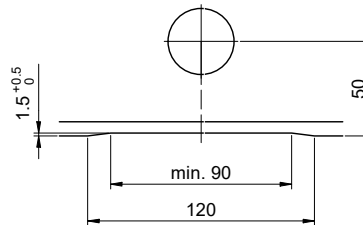


min. 60mm bei stehender Traverse.  
 min. 80mm bei liegender Traverse.

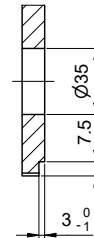
min. 60mm avec traverse debout.  
 min. 80mm avec traverse allongé.

min. 60mm con traversa stante.  
 min. 80mm con traversa coricata.

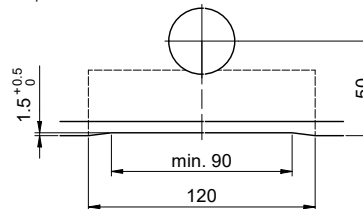
Für 12mm Arbeitsplatte.  
 Pour plan de travail de 12mm.  
 Per piano di lavoro da 12mm.



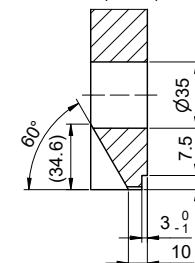
A-A (1 : 2)



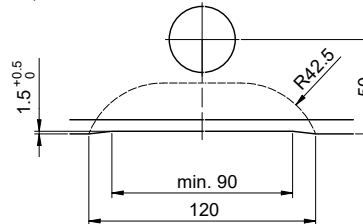
Für 13 - 30mm Arbeitsplatte.  
 Pour plan de travail de 13 - 30mm.  
 Per piano di lavoro da 13 - 30mm.



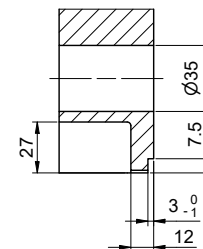
A-A (1 : 2)



Für 13 - 50mm Arbeitsplatte.  
 Pour plan de travail de 13 - 50mm.  
 Per piano di lavoro da 13 - 50mm.



A-A (1 : 2)



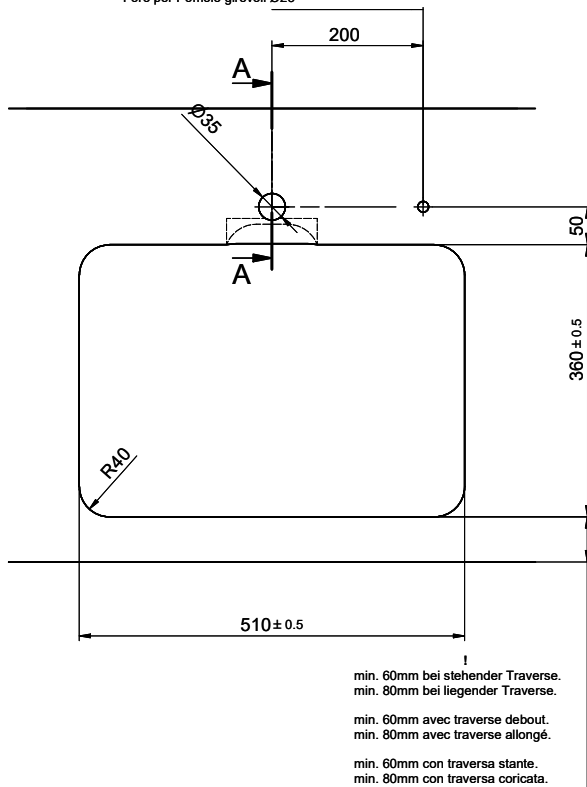
# Vantis VG 50-35IF/12 Green

**Ausschnitt für flach aufliegenden Einbau - Randbreite 12mm:**  
**Mesure de coupure pour montage en appui - Bord de 12mm de largeur:**  
**Intaglio per montaggio soprapiano - Larghezza bordo 12mm:**

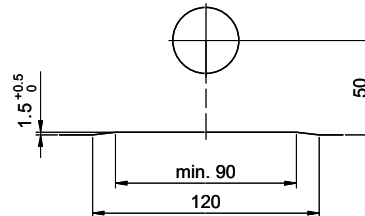
Bohrung für Zug- und Druckknöpfe Ø14  
 Bohrung für Drehknopf Ø25

Trou pour boutons et Poussoirs de commande Ø14  
 Trou pour bouton rotatif Ø25

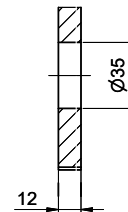
Foro per Pomelli tiranti e Pomelli pulsanti Ø14  
 Foro per Pomolo girevoli Ø25



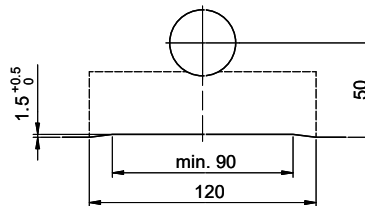
Für 12mm Arbeitsplatte.  
 Pour plan de travail de 12mm.  
 Per piano di lavoro da 12mm.



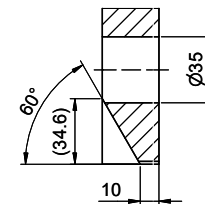
A-A (1 : 2)



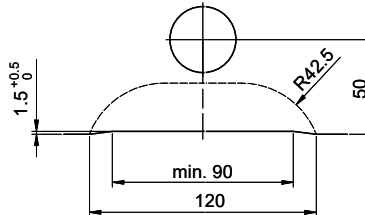
Für 13 - 30mm Arbeitsplatte.  
 Pour plan de travail de 13 - 30mm.  
 Per piano di lavoro da 13 - 30mm.



A-A (1 : 2)



Für 13 - 50mm Arbeitsplatte.  
 Pour plan de travail de 13 - 50mm.  
 Per piano di lavoro da 13 - 50mm.



A-A (1 : 2)

