

Vantis VG 50-35IF/12 Green
[> Weblink](#)


Montaggio
Lavelli a filo top / Lavelli sopra piano

Modello
VG 50-35IF/12 Green

Materiale
Acciaio inox 18/10

N. di articolo
10.105.785.00

Dimensioni base
55 cm

Piletta
3½" Salvaspazio

Finitura
Opaco

Prezzo in CHF
939.- IVA esclusa

Dimensioni lavello
500x350x160mm

Raggi d'angolo
35 mm

Tecnologia di scarico e troppopieno


Griglietta - tipo S



Placchetta di troppopieno a ribalta

Premontaggio della piletta

Montaggio della piletta in fabbrica

Distributore - opzioni di montaggio

Posizione a scelta

Green Line


Green Line è una versione di prodotto autonoma calibrata sulla sostenibilità.

Pomolo


Advant

Prezzi (aggiornati al 22.06.26 / IVA esclusa)

Modello	Materiale	Piletta	N. di articolo	Prezzo in CHF	
Vantis VG 50-35IF/12 Green	Acciaio inox 18/10, Opaco	3½" Tipo	10.105.786.00	890.-	> Weblink
		3½" TouchFlow	10.105.784.00	1'137.-	> Weblink
		3½" Salvaspazio	10.105.785.00	939.-	> Weblink

Accessorio

Accessori opzionali



> Weblink
40.000.914.00 / CHF
106.-
Vaschetta, forato



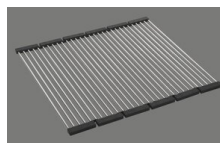
> Weblink
40.001.290.00 / CHF
106.-
Vaschetta, non forato



> Weblink
40.000.915.00 / CHF
151.-
Tagliere, in vetro, bianco



> Weblink
40.001.147.00 / CHF
151.-
Tagliere, in legno



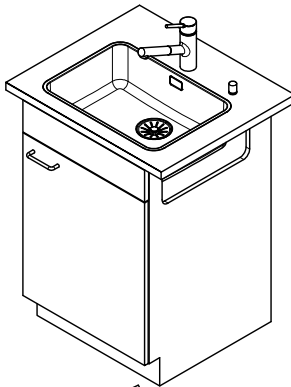
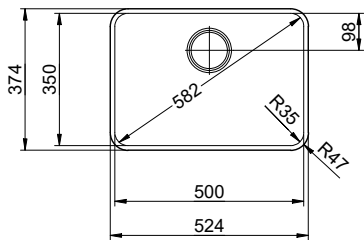
> Weblink
40.001.138.00 / CHF
125.-
Inox Pad

Ricambi

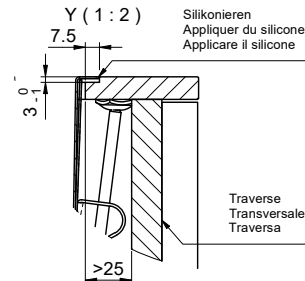
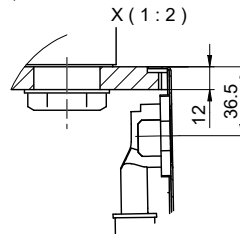
Qui trovate tutti gli accessori compatibili > Weblink

Vantis VG 50-35IF/12 Green

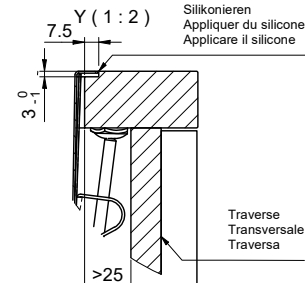
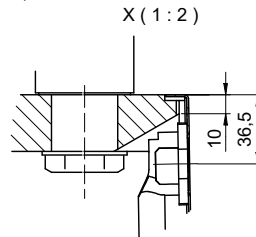
Randbreite 12mm
 Bord de 12mm de largeur
 Larghezza bordo 12mm



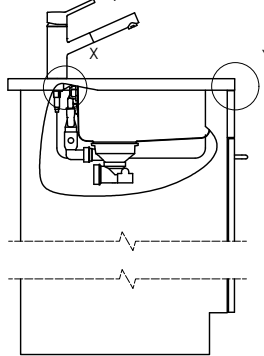
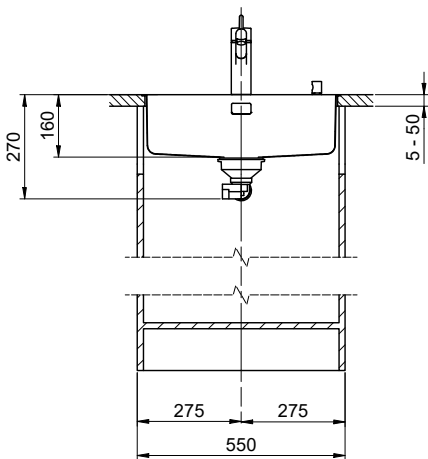
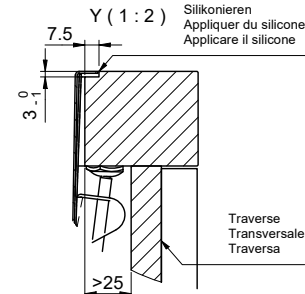
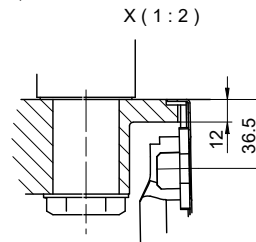
Für 12mm Arbeitsplatte.
 Pour plan de travail de 12mm.
 Per piano di lavoro da 12mm.



Für 13 - 30mm Arbeitsplatte.
 Pour plan de travail de 13 - 30mm.
 Per piano di lavoro da 13 - 30mm.



Für 13 - 50mm Arbeitsplatte.
 Pour plan de travail de 13 - 50mm.
 Per piano di lavoro da 13 - 50mm.



Bei der Planung die Traverse im Möbel beachten!

Faites attention à la barre transversale dans les meubles lors de la planification!

Presta attenzione alla traversa nei mobili durante la pianificazione!

Vom flächenbündigen Einbau in beschichtete Spanplatten raten wir ab.

Nous vous déconseillons le montage à fleur sur des panneaux de particules enduits.

Sconsigliamo il montaggio a filo top in pannelli di truciolato laminato.

Für dieses Dokument sind die darin abgesetzten Gegenstände behalten wir uns alle Rechte vor. Verwendet das Bild ohne unsere Zustimmung ist verboten. © Copyright 2020 Suterwerk AG. All rights reserved.

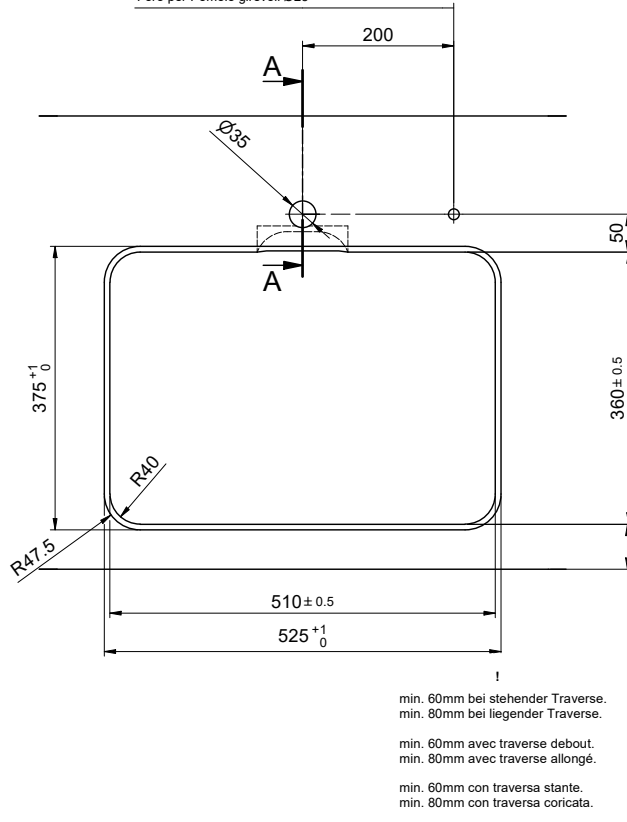
Vantis VG 50-35IF/12 Green

Ausschnitt für flächenbündigen Einbau - Randbreite 12mm:
Mesure de coupe pour montage à fleur - Bord de 12mm de largeur:
Intaglio per montaggio a filo top - Larghezza bordo 12mm:

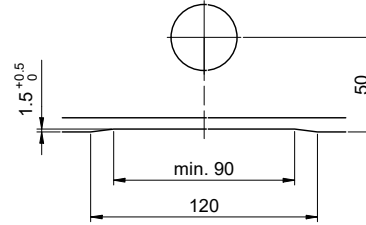
Bohrung für Zug- und Druckknöpfe Ø14
 Bohrung für Drehknopf Ø25

Trou pour boutons et Pousoirs de commande Ø14
 Trou pour bouton rotatif Ø25

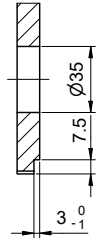
Foro per Pomelli tiranti e Pomelli pulsanti Ø14
 Foro per Pomolo girevoli Ø25



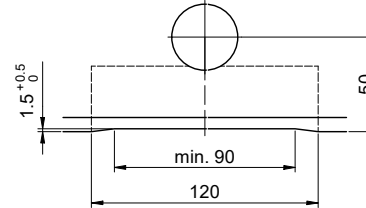
Für 12mm Arbeitsplatte.
 Pour plan de travail de 12mm.
 Per piano di lavoro da 12mm.



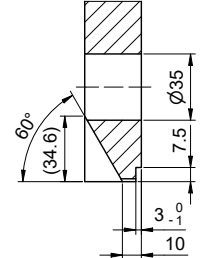
A-A (1 : 2)



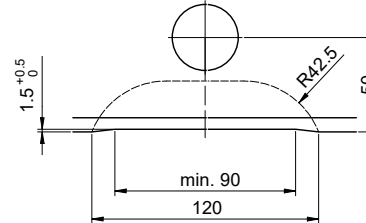
Für 13 - 30mm Arbeitsplatte.
 Pour plan de travail de 13 - 30mm.
 Per piano di lavoro da 13 - 30mm.



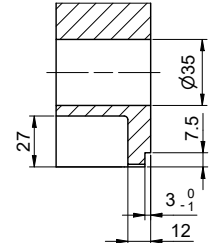
A-A (1 : 2)



Für 13 - 50mm Arbeitsplatte.
 Pour plan de travail de 13 - 50mm.
 Per piano di lavoro da 13 - 50mm.



A-A (1 : 2)



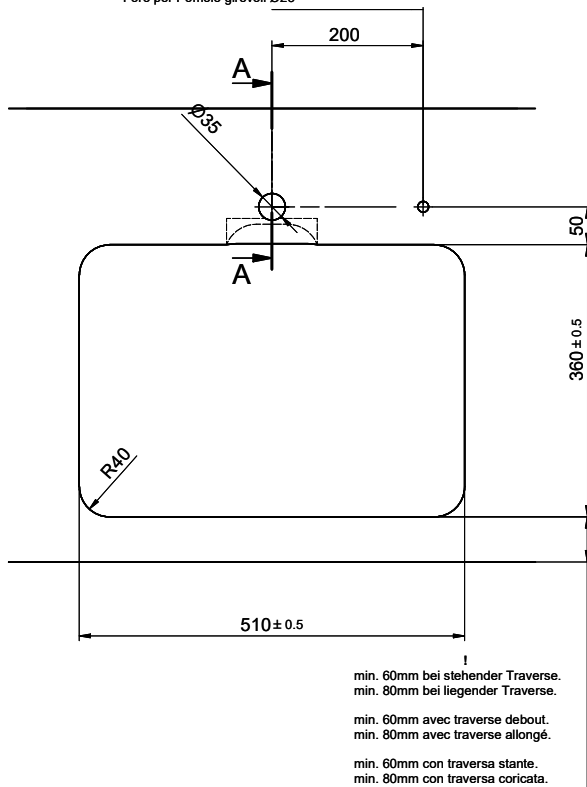
Vantis VG 50-35IF/12 Green

Ausschnitt für flach aufliegenden Einbau - Randbreite 12mm:
Mesure de coupure pour montage en appui - Bord de 12mm de largeur:
Intaglio per montaggio soprapiano - Larghezza bordo 12mm:

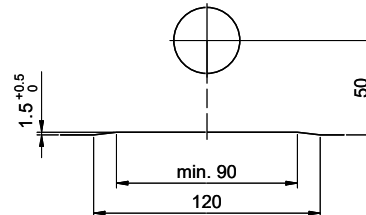
Bohrung für Zug- und Druckknöpfe Ø14
 Bohrung für Drehknopf Ø25

Trou pour boutons et Poussoirs de commande Ø14
 Trou pour bouton rotatif Ø25

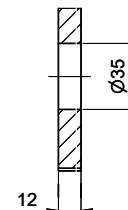
Foro per Pomelli tiranti e Pomelli pulsanti Ø14
 Foro per Pomolo girevoli Ø25



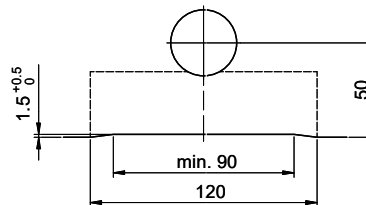
Für 12mm Arbeitsplatte.
 Pour plan de travail de 12mm.
 Per piano di lavoro da 12mm.



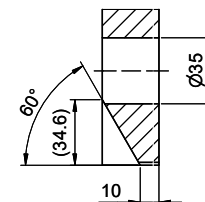
A-A (1 : 2)



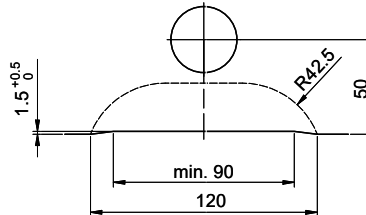
Für 13 - 30mm Arbeitsplatte.
 Pour plan de travail de 13 - 30mm.
 Per piano di lavoro da 13 - 30mm.



A-A (1 : 2)



Für 13 - 50mm Arbeitsplatte.
 Pour plan de travail de 13 - 50mm.
 Per piano di lavoro da 13 - 50mm.



A-A (1 : 2)

