

Vantis VG 55IF/12 Green

[> Weblink](#)**Montaggio**

Lavelli a filo top / Lavelli sopra piano

Modello

VG 55IF/12 Green

Materiale

Acciaio inox 18/10

N. di articolo

10.105.789.00

Dimensioni base

60 cm

Piletta

3½" Tipo

Finitura

Opaco

Prezzo in CHF

1'304.- IVA esclusa

Dimensioni lavello

550x420x160mm

Raggi d'angolo

35 mm

Tecnologia di scarico e troppopieno

Griglietta - tipo S



Placchetta di troppopieno a ribalta

Premontaggio della piletta

Montaggio della piletta in fabbrica

Distributore - opzioni di montaggio

Posizione a scelta

Green Line

Green Line è una versione di prodotto autonoma calibrata sulla sostenibilità.

Pomolo inclusi**Prezzi (aggiornati al 14.05.26 / IVA esclusa)**

Modello	Materiale	Piletta	N. di articolo	Prezzo in CHF	
Vantis VG 55IF/12 Green	Acciaio inox 18/10, Opaco	3½" Tipo	10.105.789.00	1'304.-	> Weblink
		3½" TouchFlow	10.105.787.00	1'551.-	> Weblink
		3½" Salvaspazio	10.105.788.00	1'353.-	> Weblink

Accessorio

Accessori opzionali



[> Weblink](#)
40.000.914.00 / CHF
106.-
Vaschetta, forato



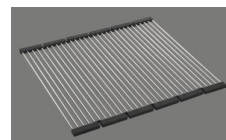
[> Weblink](#)
40.001.290.00 / CHF
106.-
Vaschetta, non forato



[> Weblink](#)
40.000.915.00 / CHF
151.-
Tagliere, in vetro, bianco

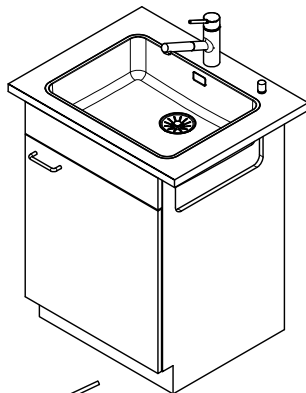
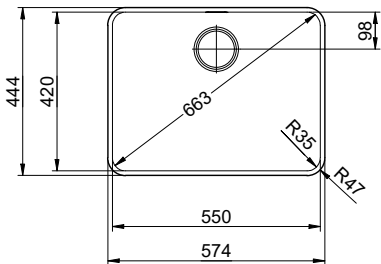


[> Weblink](#)
40.001.147.00 / CHF
151.-
Tagliere, in legno

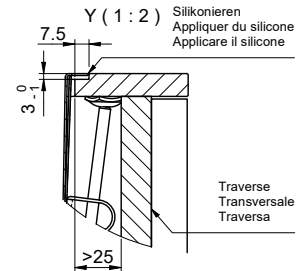
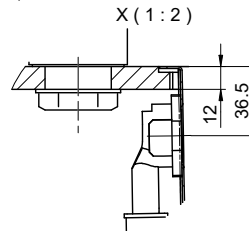


[> Weblink](#)
40.001.138.00 / CHF
125.-
Inox Pad

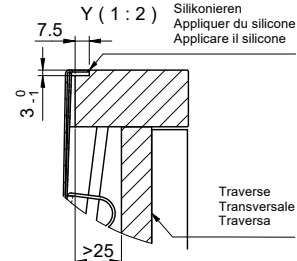
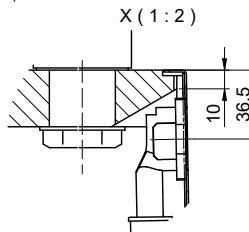
RicambiQui trovate tutti gli accessori compatibili [> Weblink](#)



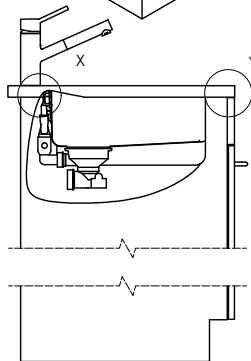
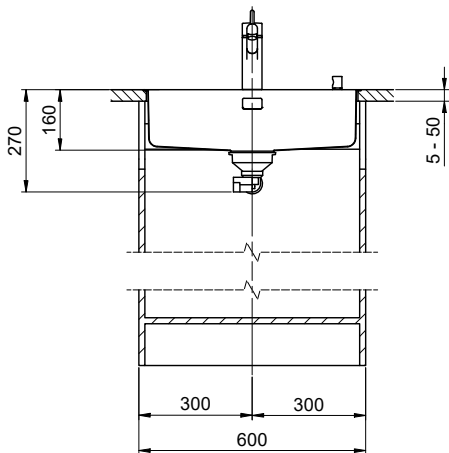
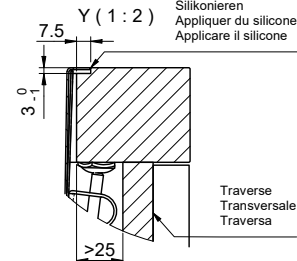
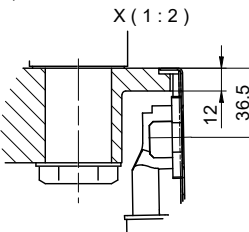
Für 12mm Arbeitsplatte.
 Pour plan de travail de 12mm.
 Per piano di lavoro da 12mm.



Für 13 - 30mm Arbeitsplatte.
 Pour plan de travail de 13 - 30mm.
 Per piano di lavoro da 13 - 30mm.



Für 13 - 50mm Arbeitsplatte.
 Pour plan de travail de 13 - 50mm.
 Per piano di lavoro da 13 - 50mm.



Bei der Planung die Traverse im Möbel beachten!

Faites attention à la barre transversale dans les meubles lors de la planification!

Presta attenzione alla traversa nei mobili durante la pianificazione!

Vom flächenbündigen Einbau in beschichtete Spanplatten raten wir ab.

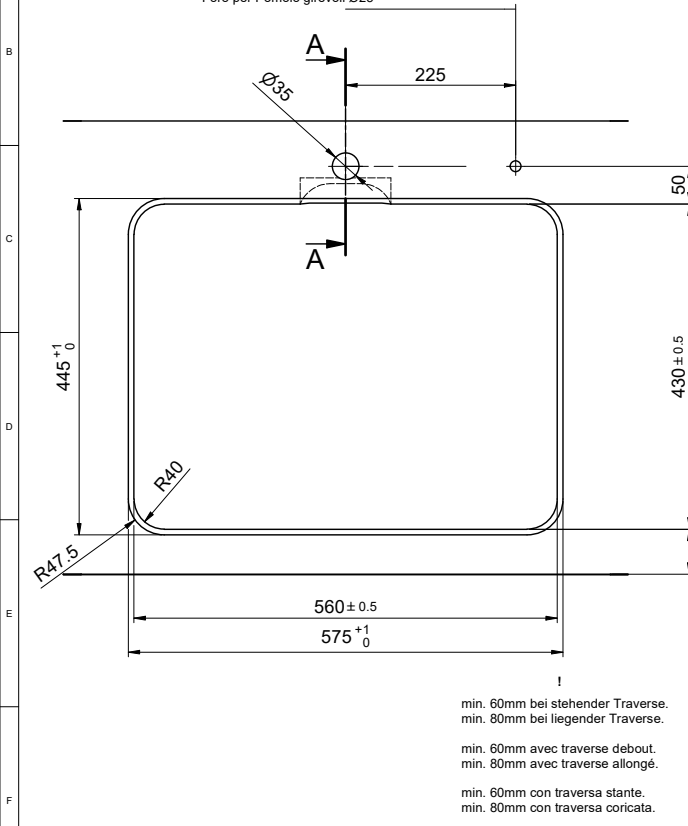
Nous vous déconseillons le montage à fleur sur des panneaux de particules enduits.

Sconsigliamo il montaggio a filo top in pannelli di truciolato laminato.

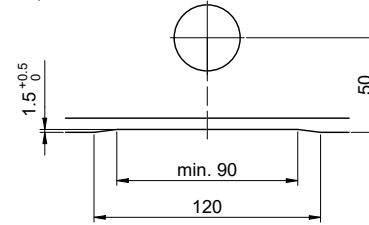
Bohrung für Zug- und Druckknöpfe Ø14
 Bohrung für Drehknopf Ø25

Trou pour boutons et Poussoirs de commande Ø14
 Trou pour bouton rotatif Ø25

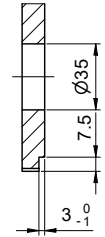
Foro per Pomelli tiranti e Pomelli pulsanti Ø14
 Foro per Pomolo girevoli Ø25



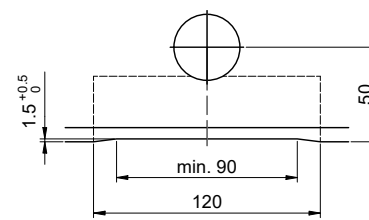
Für 12mm Arbeitsplatte.
 Pour plan de travail de 12mm.
 Per piano di lavoro da 12mm.



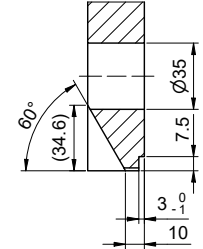
A-A (1 : 2)



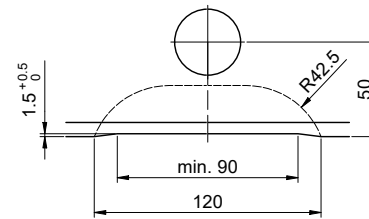
Für 13 - 30mm Arbeitsplatte.
 Pour plan de travail de 13 - 30mm.
 Per piano di lavoro da 13 - 30mm.



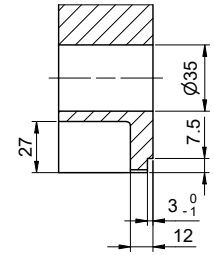
A-A (1 : 2)



Für 13 - 50mm Arbeitsplatte.
 Pour plan de travail de 13 - 50mm.
 Per piano di lavoro da 13 - 50mm.



A-A (1 : 2)



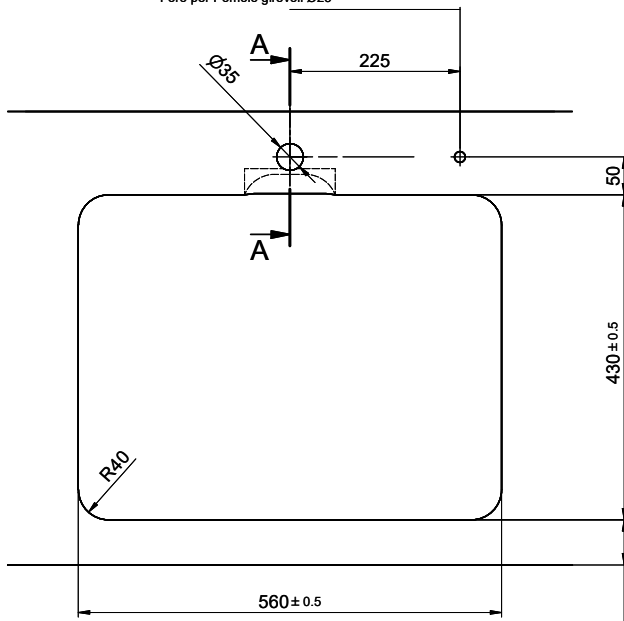
Vantis VG 55IF/12 Green

Ausschnitt für flach aufliegenden Einbau - Randbreite 12mm:
Mesure de coupure pour montage en appui - Bord de 12mm de largeur:
Intaglio per montaggio soprapiano - Larghezza bordo 12mm:

Bohrung für Zug- und Druckknöpfe Ø14
 Bohrung für Drehknopf Ø25

Trou pour boutons et Pousoirs de commande Ø14
 Trou pour bouton rotatif Ø25

Foro per Pomelli tiranti e Pomelli pulsanti Ø14
 Foro per Pomolo girevoli Ø25



!
 min. 60mm bei stehender Traverse.
 min. 80mm bei liegender Traverse.

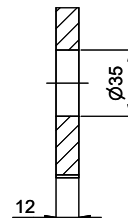
min. 60mm avec traverse debout.
 min. 80mm avec traverse allongé.

min. 60mm con traversa stante.
 min. 80mm con traversa coricata.

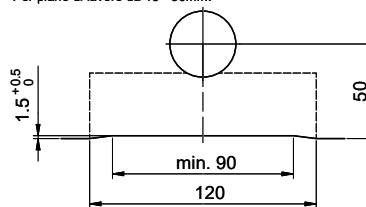
Für 12mm Arbeitsplatte.
 Pour plan de travail de 12mm.
 Per piano di lavoro da 12mm.



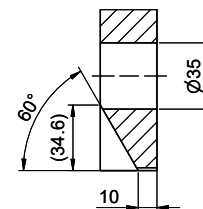
A-A (1 : 2)



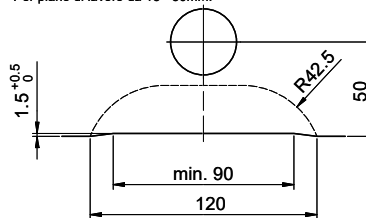
Für 13 - 30mm Arbeitsplatte.
 Pour plan de travail de 13 - 30mm.
 Per piano di lavoro da 13 - 30mm.



A-A (1 : 2)



Für 13 - 50mm Arbeitsplatte.
 Pour plan de travail de 13 - 50mm.
 Per piano di lavoro da 13 - 50mm.



A-A (1 : 2)

