

Vantis VX 34IF Varix

[> Weblink](#)

Montaggio
Lavelli a filo top / Lavelli sopra piano

Modello
VX 34IF Varix

Materiale
Acciaio inox 18/10

N. di articolo
10.105.253.00

Dimensioni base
40 cm

Piletta
3½" A tappo c.griglietta

Finitura
Mid-matt

Prezzo in CHF
679.- IVA esclusa

Dimensioni lavello
340x420x160mm

Raggi d'angolo
35 mm

Tecnologia di scarico e troppopieno



Troppopieno coperto

Premontaggio della piletta
Montaggio della piletta in fabbrica

Distributore - opzioni di montaggio
Posizione a scelta

Tecnologia di scarico e troppopieno
Pomolo inclusi

Prezzi (aggiornati al 06.05.26 / IVA esclusa)

Modello	Materiale	Piletta	N. di articolo	Prezzo in CHF	
Vantis VX 34IF/15 Varix	Acciaio inox 18/10, Mid-matt	3½" A tappo c.griglietta	10.105.253.00	679.-	> Weblink
		3½" Salvaspazio	10.105.252.00	728.-	> Weblink

Descrizione del prodotto

1 versione di prodotto, 2 metodi di montaggio

I modelli IF presentano un grande vantaggio: possono essere posati sia a filo top che sopra piano.

Montaggio a filo top: Consiglio per la scelta del piano di lavoro

Consigliamo il montaggio nei piani di lavoro in ceramica, granito, pietra artificiale (per es. Corian o Varicor) oppure in legno massiccio. Sconsigliamo la posa in pannelli di truciolato rivestiti.

Accessorio

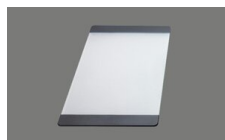
Accessori opzionali



[> Weblink](#)
40.000.914.00 / CHF 106.-
Vaschetta, forato



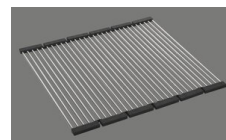
[> Weblink](#)
40.001.290.00 / CHF 106.-
Vaschetta, non forato



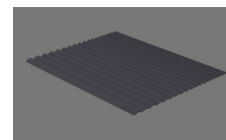
[> Weblink](#)
40.000.915.00 / CHF 151.-
Tagliere, in vetro, bianco



[> Weblink](#)
40.001.147.00 / CHF 151.-
Tagliere, in legno



[> Weblink](#)
40.001.138.00 / CHF 125.-
Inox Pad



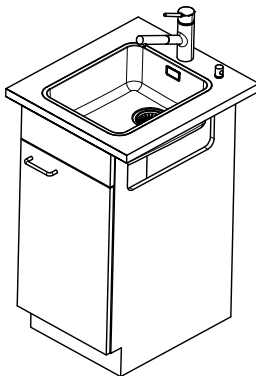
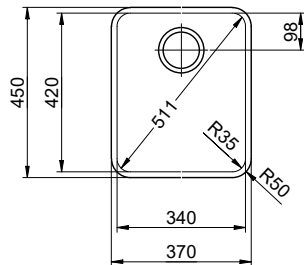
[> Weblink](#)
40.002.008.00 / CHF 51.-
Maro tappetino scolapiatti, Dark Grey

Ricambi

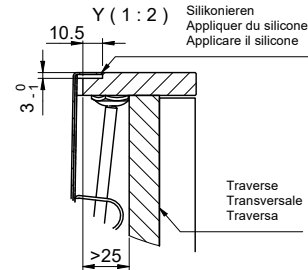
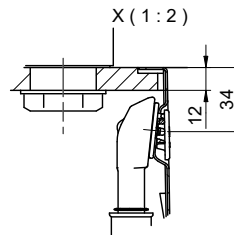
Qui trovate tutti gli accessori compatibili [> Weblink](#)

Vantis VX 34IF/15 Varix

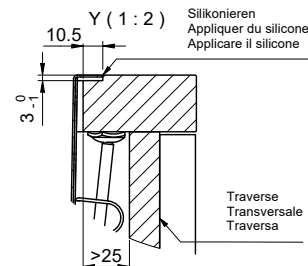
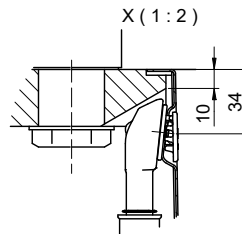
Randbreite 15mm
 Bord de 15mm de largeur
 Larghezza bordo 15mm



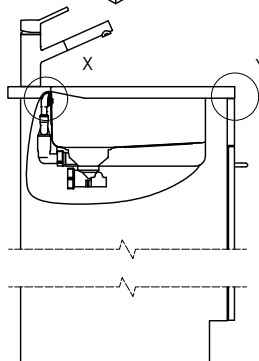
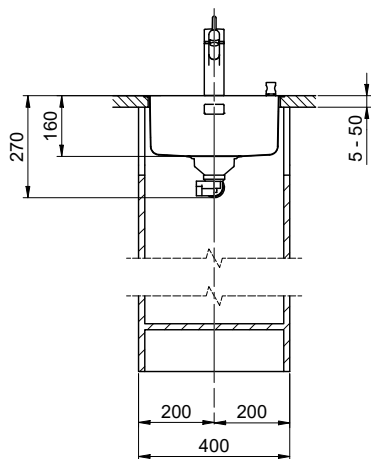
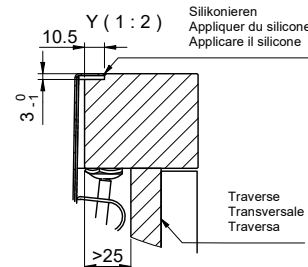
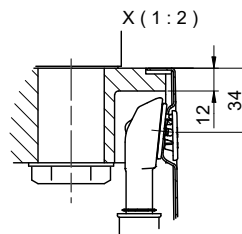
Für 12mm Arbeitsplatte.
 Pour plan de travail de 12mm.
 Per piano di lavoro da 12mm.



Für 13 - 30mm Arbeitsplatte.
 Pour plan de travail de 13 - 30mm.
 Per piano di lavoro da 13 - 30mm.



Für 13 - 50mm Arbeitsplatte.
 Pour plan de travail de 13 - 50mm.
 Per piano di lavoro da 13 - 50mm.



Bei der Planung die Traverse im Möbel beachten!

Faites attention à la barre transversale dans les meubles lors de la planification!

Presta attenzione alla traversa nei mobili durante la pianificazione!

Vom flächenbündigen Einbau in beschichtete Spanplatten raten wir ab.

Nous vous déconseillons le montage à fleur sur des panneaux de particules enduits.

Sconsigliamo il montaggio a filo top in pannelli di truciolato laminato.

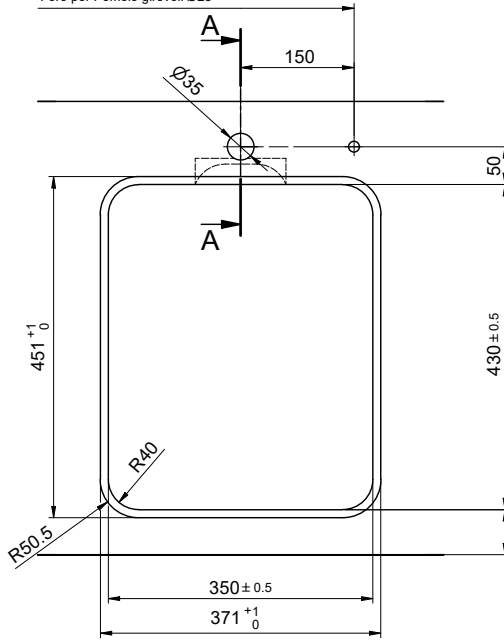
Vantis VX 34IF/15 Varix

Ausschnitt für flächenbündigen Einbau - Randbreite 15mm:
Mesure de coupure pour montage à fleur - Bord de 15mm de largeur:
Intaglio per montaggio a filo top - Larghezza bordo 15mm:

Bohrung für Zug- und Druckknöpfe Ø14
 Bohrung für Drehknopf Ø25

Trou pour boutons et Poussoirs de commande Ø14
 Trou pour bouton rotatif Ø25

Foro per Pomelli tiranti e Pomelli pulsanti Ø14
 Foro per Pomolo girevoli Ø25

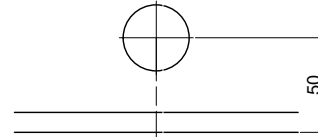


! min. 60mm bei stehender Traverse.
 min. 80mm bei liegender Traverse.

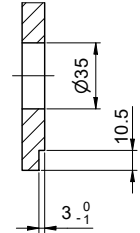
min. 60mm avec traverse debout.
 min. 80mm avec traverse allongé.

min. 60mm con traversa stante.
 min. 80mm con traversa coricata.

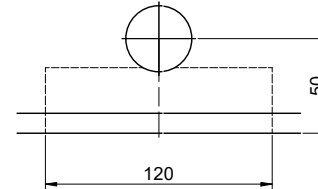
Für 12mm Arbeitsplatte.
 Pour plan de travail de 12mm.
 Per piano di lavoro da 12mm.



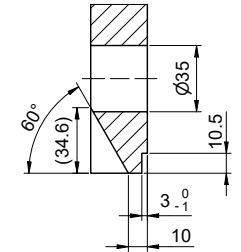
A-A (1 : 2)



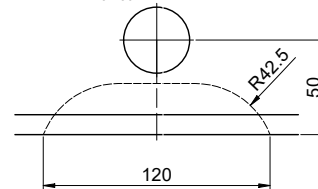
Für 13 - 30mm Arbeitsplatte.
 Pour plan de travail de 13 - 30mm.
 Per piano di lavoro da 13 - 30mm.



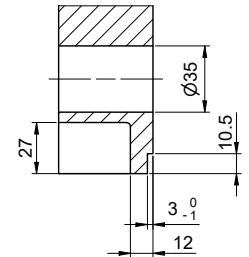
A-A (1 : 2)



Für 13 - 50mm Arbeitsplatte.
 Pour plan de travail de 13 - 50mm.
 Per piano di lavoro da 13 - 50mm.



A-A (1 : 2)



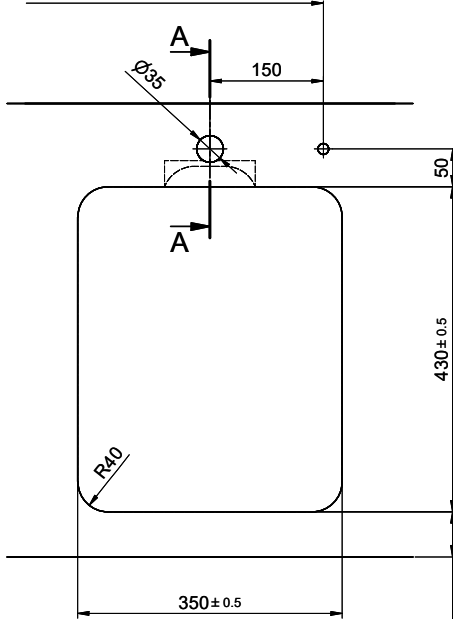
Vantis VX 34IF/15 Varix

Ausschnitt für aufliegenden Einbau - Randbreite 15mm:
Mesure de coupure pour montage en appui - Bord de 15mm de largeur:
Intaglio per montaggio soprapiano - Larghezza bordo 15mm:

Bohrung für Zug- und Druckknöpfe Ø14
 Bohrung für Drehknopf Ø25

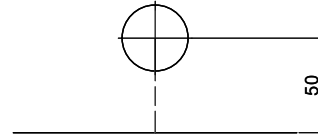
Trou pour boutons et Pousoirs de commande Ø14
 Trou pour bouton rotatif Ø25

Foro per Pomelli tiranti e Pomelli pulsanti Ø14
 Foro per Pomolo girevoli Ø25

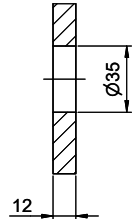


min. 60mm bei stehender Traverse.
 min. 80mm bei liegender Traverse.
 min. 60mm avec traverse debout.
 min. 80mm avec traverse allongé.
 min. 60mm con traversa stante.
 min. 80mm con traversa coricata.

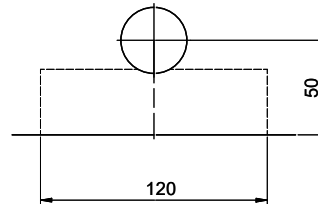
Für 12mm Arbeitsplatte.
 Pour plan de travail de 12mm.
 Per piano di lavoro da 12mm.



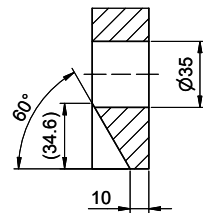
A-A (1 : 2)



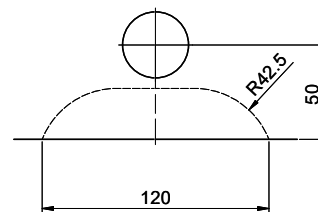
Für 13 - 30mm Arbeitsplatte.
 Pour plan de travail de 13 - 30mm.
 Per piano di lavoro da 13 - 30mm.



A-A (1 : 2)



Für 13 - 50mm Arbeitsplatte.
 Pour plan de travail de 13 - 50mm.
 Per piano di lavoro da 13 - 50mm.



A-A (1 : 2)

